

329 Ellington Road

EAST HARTFORD, CONNECTICUT

▼ *For Sublease*



SULLIVAN HAYES
N O R T H E A S T

860.677.5252 • sullivanhayesne.com

Brian Knowles

860.470.1979

bknowles@shcne.com

Timothy McNamara

860.470.1977

tmcnamara@shcne.com

329 Ellington Road

EAST HARTFORD, CONNECTICUT

▼ For Sublease

- Lease expires 1/31/33
- Signalized intersection with access from both streets
- Excellent Visibility
- Over 27,000 VPD
- Heavy commuter route with easy access to interstate system



NEARBY TENANTS

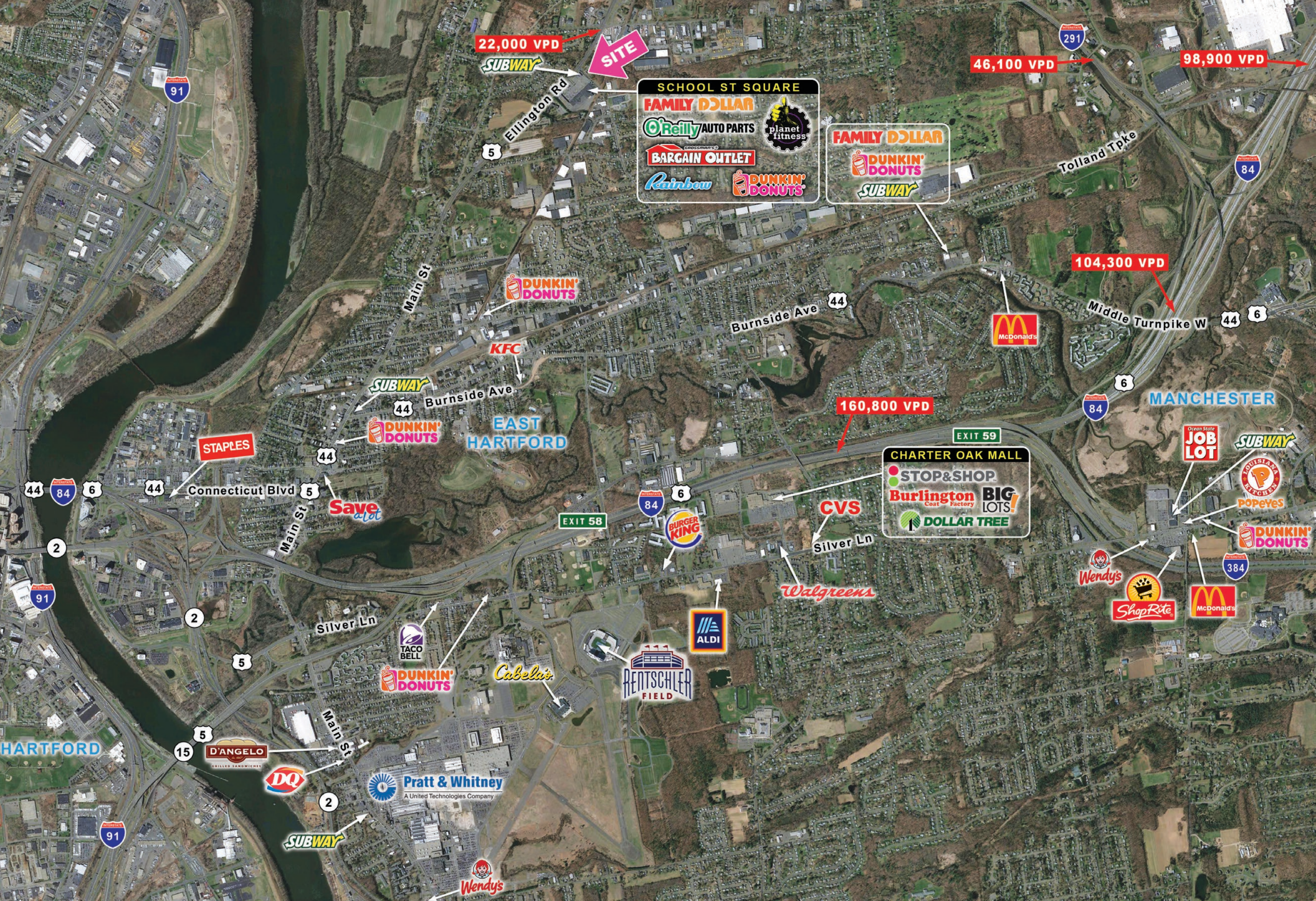


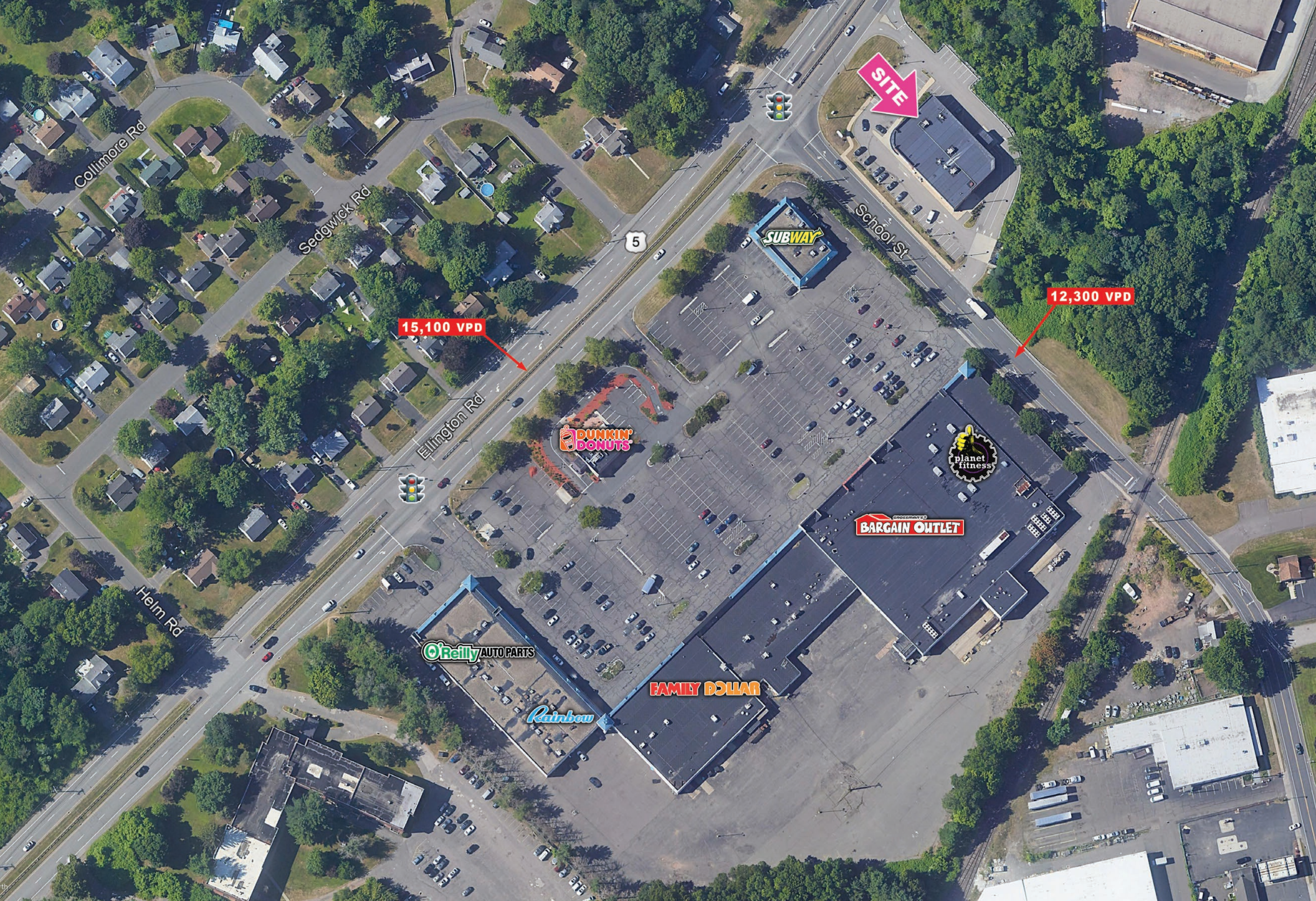




Location	329 Ellington Road, East Hartford, CT		
Size	10,620 SF building / 2.36 Acres / 45 parking spaces		
Price	Call for details		
Area Retail	Cabela's, Staples, Save-A-Lot, Stop & Shop, Burlington, Big Lots		
Traffic Counts	15,100 VPD on Ellington Rd, 12,300 VPD on School St		

Demographics	1 mile	2 miles	3 miles
Population	6,294	23,309	55,197
Households	2,331	8,836	20,610
Avg. HH Income	\$75,127	\$68,358	\$69,544
Daytime Pop.	2,713	10,299	25,715





SULLIVAN HAYES
N O R T H E A S T

860.677.5252 • sullivanhayesne.com

Brian Knowles
860.470.1979
bknowles@shcne.com

Timothy McNamara
860.470.1977
tmcnamara@shcne.com