



# PARKWAY CORPORATE PLACE

---

📍 915 - 935 - 955 National Parkway Schaumburg, Illinois

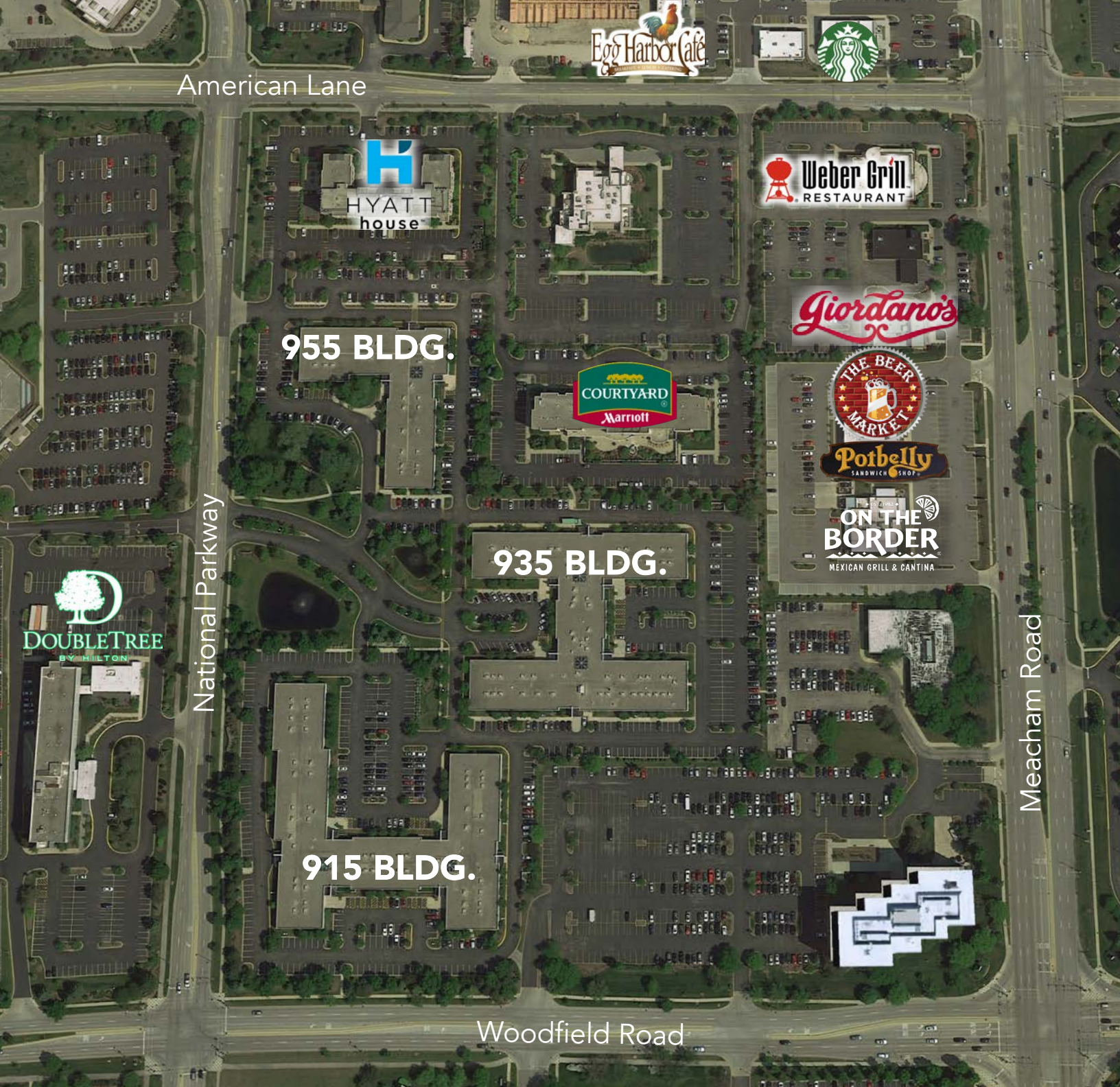


# PROPERTY HIGHLIGHTS

- One of the most walkable locations in the suburbs
- New ownership
- New amenities
- New bathroom and common areas
- New signage
- Conference room
- 24/7 HVAC Control
- 24/7 Access
- Convenient, abundant parking
- Dry cleaning
- Food trucks







American Lane



955 BLDG.



935 BLDG.

National Parkway

Meacham Road

915 BLDG.

Woodfield Road

ACCESS

dry cleaning

efficient floorplates

signage

conference rooms

location

abundant parking

amenities

walkable

NEW



## HOTELS

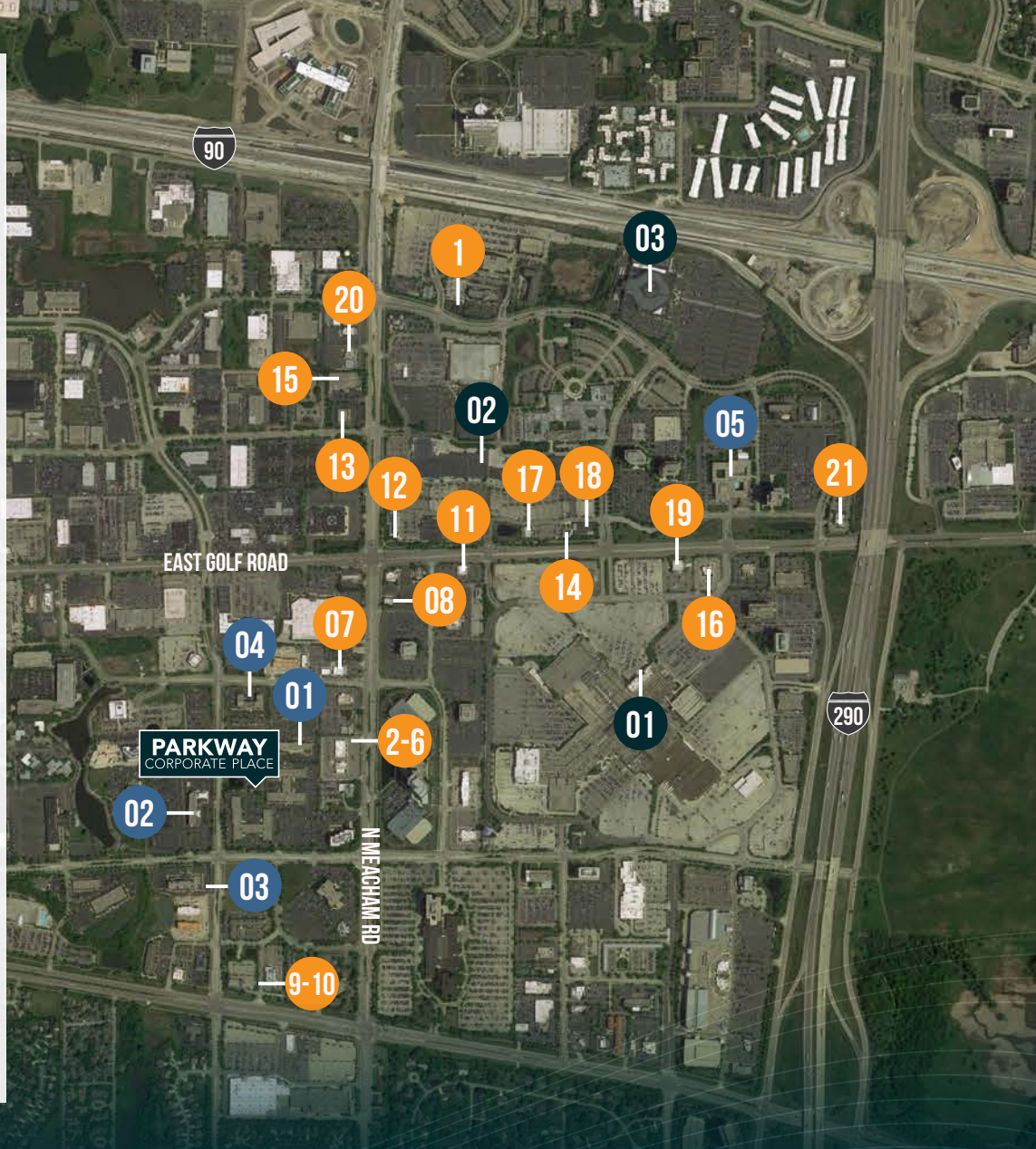
1. Courtyard Hotel
2. DoubleTree Hotel
3. Hilton Garden Inn
4. Hyatt House
5. Hyatt Regency

## DINING

1. Morton's The Steakhouse
2. Weber Grill
3. Giordano's
4. Potbelly
5. On the Border
6. Beer Market
7. ShopHouse Southeast Asian
8. Panera Bread
9. Wildfire
10. Benihana
11. TGI Friday's
12. Qdoba Mexican Grill
13. Noodles & Company
14. Starbucks
15. Five Guys
16. Olive Garden
17. California Pizza Kitchen
18. Kuma's Corner
19. Longhorn Steakhouse
20. Buffalo Wild Wings
21. Joe's Crab Shack

## SHOPPING

1. Woodfield Mall
2. Woodfield Village Green
3. IKEA



### RICK BENOY

773.304.4105

rick.benoy@am.jll.com

### DOUG SHEHAN

773.304.1382

doug.shehan@am.jll.com

