



Two Commerce Square

2001 Market Street | Philadelphia, PA 19103

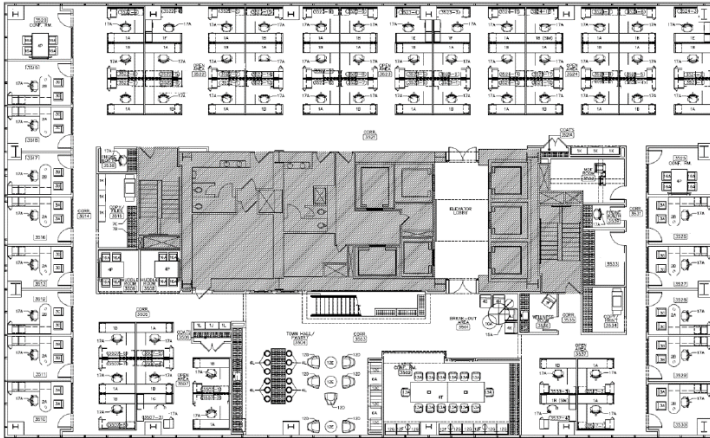
**7,170 - 36,436 SF
available for sublease**

- > Trophy office space with dramatic views of the Philadelphia skyline
- > Term through December 31, 2023
- > Office furniture available
- > On-site parking

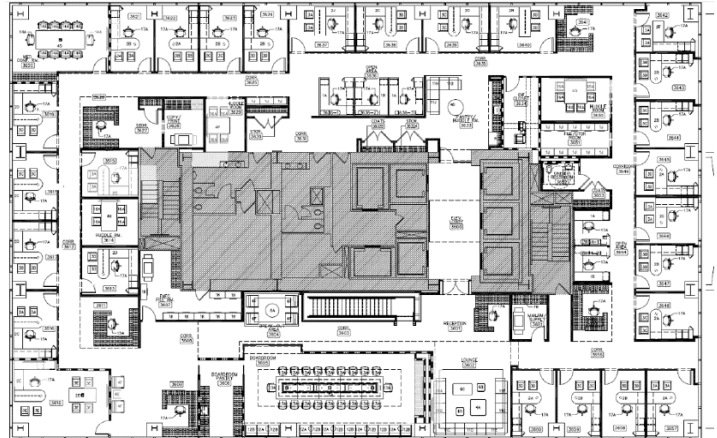
Property Highlights

- > 7,170 - 36,436 SF on the 35th, 36th, and 37th floors
- > Price: negotiable
- > One block from 30th Street Station

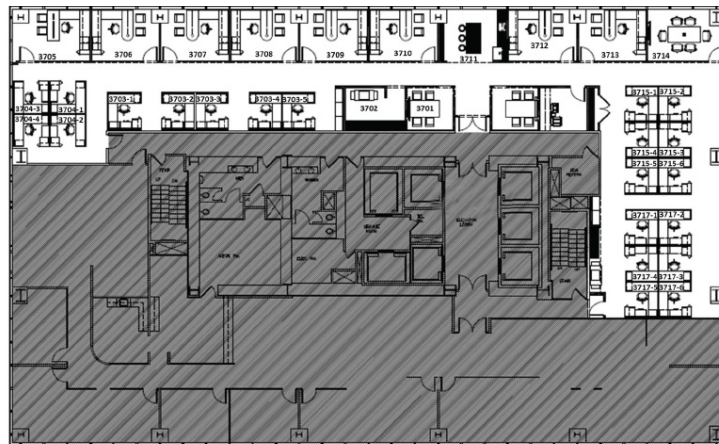
35th Floor: 14,633 SF



36th Floor: 14,633 SF



37th Floor: 7,170 SF



Anthony LiVecchi
Vice President

+1 215 399 1817
anthony.livecchi@am.jll.com

Ashley Parrillo
Associate Vice President

+1 215 399 1820
ashley.parrillo@am.jll.com

Peter Barnes
Associate Vice President

+1 215 399 1824
peter.barnes@am.jll.com



Jones Lang LaSalle Brokerage, Inc.
1650 Arch Street, Suite 2500, Philadelphia, PA 19103