

8,085 RSF Available



2211 Old Earhart Road  
Ann Arbor, MI 48105

[www.2211oldearthart.com](http://www.2211oldearthart.com)





# Property Highlights



Available Now  
8,085 RSF  
\$23.00 / SF NNN



Fitness center  
available



Common area  
renovations  
coming soon



Attractive  
contemporary  
design with state-  
of-the-art building  
systems



Best-in-class  
quality, 2006  
construction



Impressive two-  
story lobby features  
premium finishes  
and materials



Outstanding location  
at the intersection  
of US-23 and  
Plymouth Road



Exceptional  
visibility from  
US-23 (80,000  
vehicles daily)



Exceptional HQ  
quality office  
building within  
minutes of the  
Univ. of Michigan



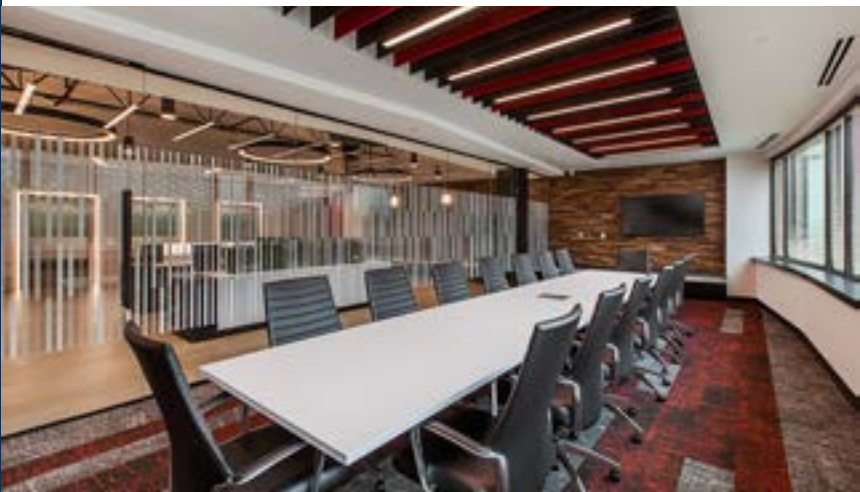
Close proximity  
to restaurants,  
hotels and retail  
services



Underground  
heated parking  
available



Full service  
cafeteria



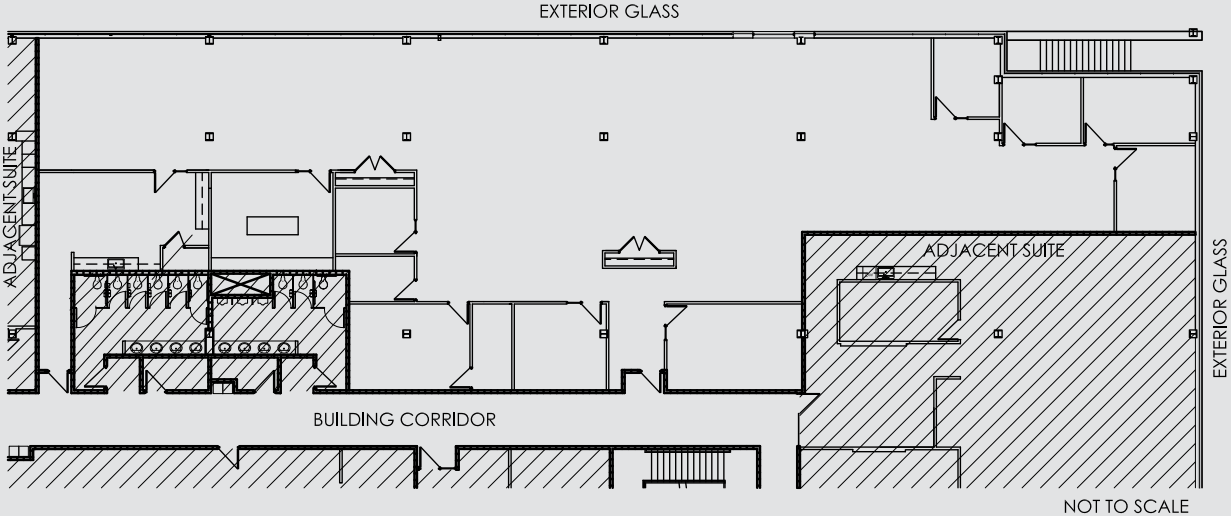
# Floor Plans

## First Floor



## Suite 185 - 8,085 RSF

TOUR THE SPACE





National Vehicle  
and Fuel Emissions  
Laboratory

North Campus  
Research Complex

University  
of Michigan  
North Campus

Mcity  
University of  
Michigan

Applebee's Grill & Bar

Plum Market

Sweetwater Coffee & Tea

U of M  
East Medical  
Campus

 **EARHART**  
CORPORATE CENTER

**For leasing information,  
contact:**

Neal Warling  
+1 734 769 3201  
neal.warling@jll.com

Kelly Fisher  
+1 734 769 3203  
kelly.fisher@jll.com