



11970 Borman Drive

Maryland Heights, MO 63146

±25,989 SF office building for sale in Westport

Jones Lang LaSalle Americas, Inc., a licensed real estate broker in 48 states





Property highlights

Originally constructed in 1982 and renovated in 1994, 11970 Borman Drive is positioned for a user/owner who has a vision for the future. The building is comprised of two floors at approximately 13,000 SF each. With an excellent Westport location, the property provides easy access to I-270 and variety of nearby amenities.



±25,989 SF single or multi tenant building, entire building available for owner/user



±1.62 acre lot size (parcel ID: 150340294)



2021 property taxes: \$42,808 (or \$1.65/SF)



Renovation opportunity



Ample parking with 96 surface spaces



On-site electric vehicle charging station



EPDM roof replaced in 2015



Fully sprinklered



Potential to add building/monument signage



Excellent highway access to Interstate 270



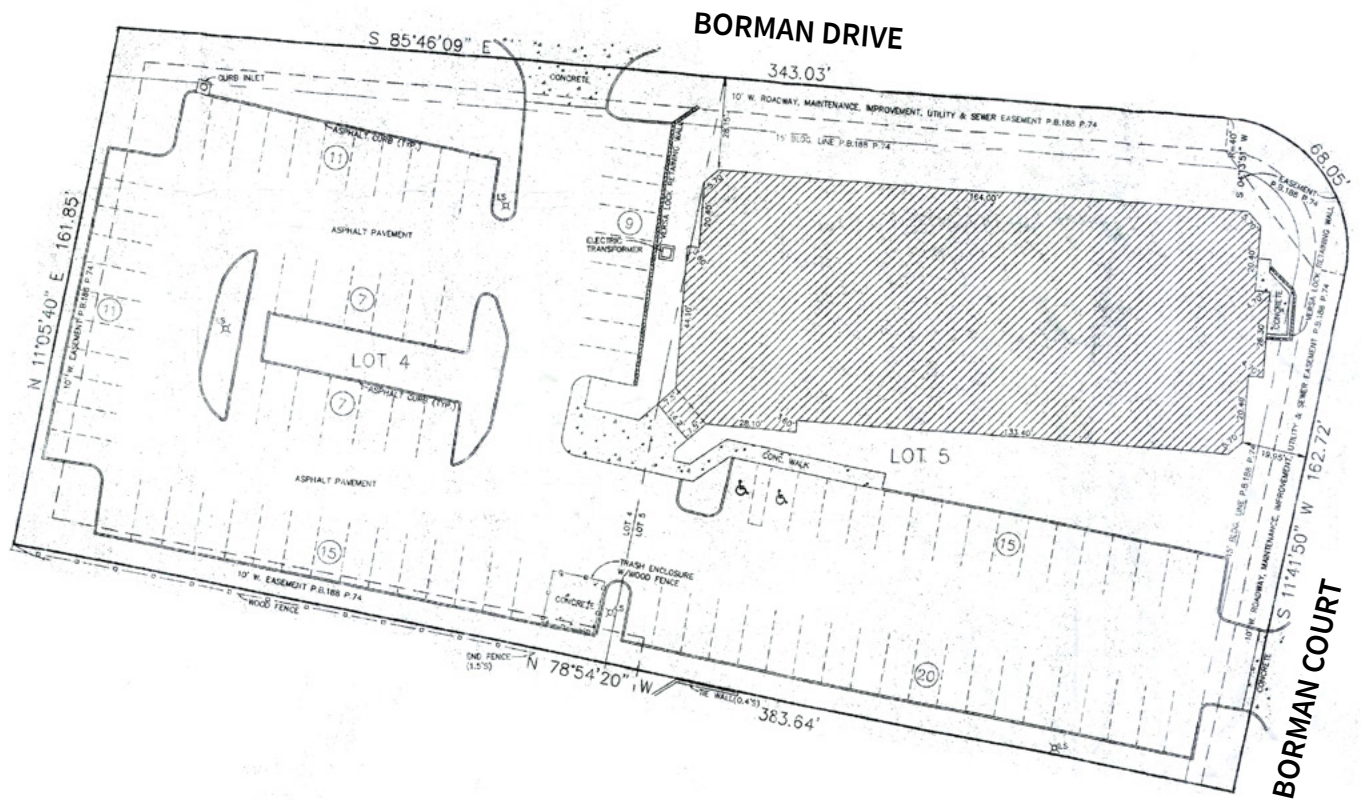
Near vibrant Westport Plaza



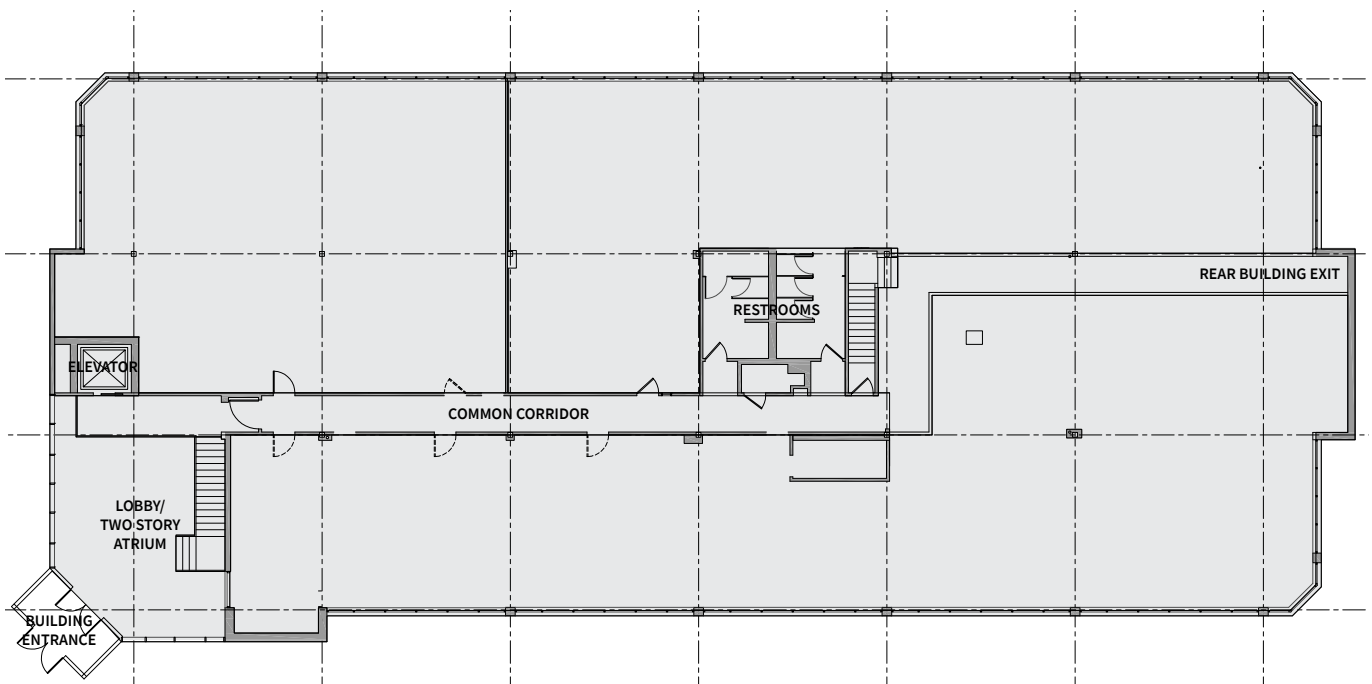
Sale price: \$1,690,000 (\$65.00/SF)



Site plan



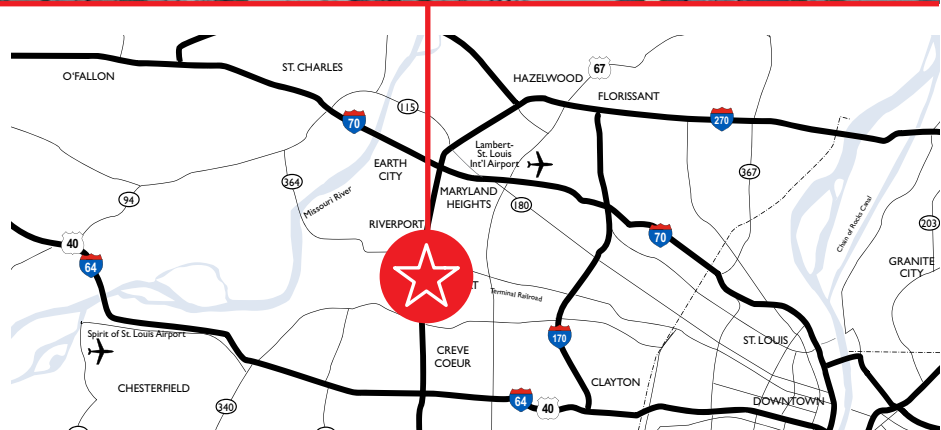
Typical floor plate



Location/site

11970 Borman Drive is conveniently located just off Page Avenue only 1.5 miles from I-270. There are various dining, entertainment, and hotel options nearby

including Westport Plaza, Funny Bone, Kobe Steakhouse of Japan, Fuzzy's Taco Shop, Westport Social, Drunken Fish, Trainwreck Saloon, Kemoll's, Starbucks, and Qdoba.



Contact

David Biales, CCIM

Managing Director
+1 314 261 7368
david.biales@am.jll.com

jll.com/st-louis

+1 314 338 2080

Jones Lang LaSalle Americas, Inc.,
a licensed real estate broker in 48 states



DISCLAIMER Although information has been obtained from sources deemed reliable, neither Owner nor JLL makes any guarantees, warranties or representations, express or implied, as to the completeness or accuracy as to the information contained herein. Any projections, opinions, assumptions or estimates used are for example only. There may be differences between projected and actual results, and those differences may be material. The Property may be withdrawn without notice. Neither Owner nor JLL accepts any liability for any loss or damage suffered by any party resulting from reliance on this information. If the recipient of this information has signed a confidentiality agreement regarding this matter, this information is subject to the terms of that agreement. ©2022. Jones Lang LaSalle IP, Inc. All rights reserved.