



La
La Salle School

For Sale

Two-story ±32,000 SF school building on 1.84 acres




1106 N. Jefferson | St. Louis, MO

Jones Lang LaSalle Americas, Inc., a licensed real estate broker in 48 states

Welcome to La Salle School



The image shows the exterior of a modern school building. On the left, there is a large glass entrance with multiple panes and a set of concrete steps leading up to it. To the right of the glass section is a large, single-story wall made of light-colored bricks. The words "LA SALLE SCHOOL" are mounted on this brick wall in a dark, sans-serif font. The building has a flat roof with a few metal vent pipes visible. The sky is a clear, bright blue. In the bottom right corner, there is an orange square logo with the letters "La" in white and the text "La Salle School" below it.

LA SALLE SCHOOL

La

La Salle School



Building features

- 12 classrooms (approx. 675sf each or 29 student capacity)
- 7 faculty offices
- Library (approx. 1,200sf)
- Cafeteria with Kitchen (approx. 2,500sf)
- Multi-purpose room includes Gymnasium & Auditorium
- Science lab

Building improvements

- 100% air conditioned with VRF self-contained heating & cooling unit in each classroom
- New Electrical & Plumbing
- New LED lighting and energy-efficient windows throughout
- Elevator served for ADA access
- Equipped with AT&T fiber and Charter copper coax
- Includes security, intercom, phone, bell systems FF&E

Plug and Play educational facility

Built in 1987, this vast, amenity-rich two-story **32,000 SF** school building is sure to please. The school sits on **1.84 acres** and has adjacent ballfields.

In 2016, the school underwent a multi-million dollar renovation and expansion which included new electrical and plumbing, LED lighting and energy-efficient windows throughout.

Building improvements



Electrical



Plumbing



LED Lighting



AT&T/Charter



Energy-efficient
Windows



100% A/C



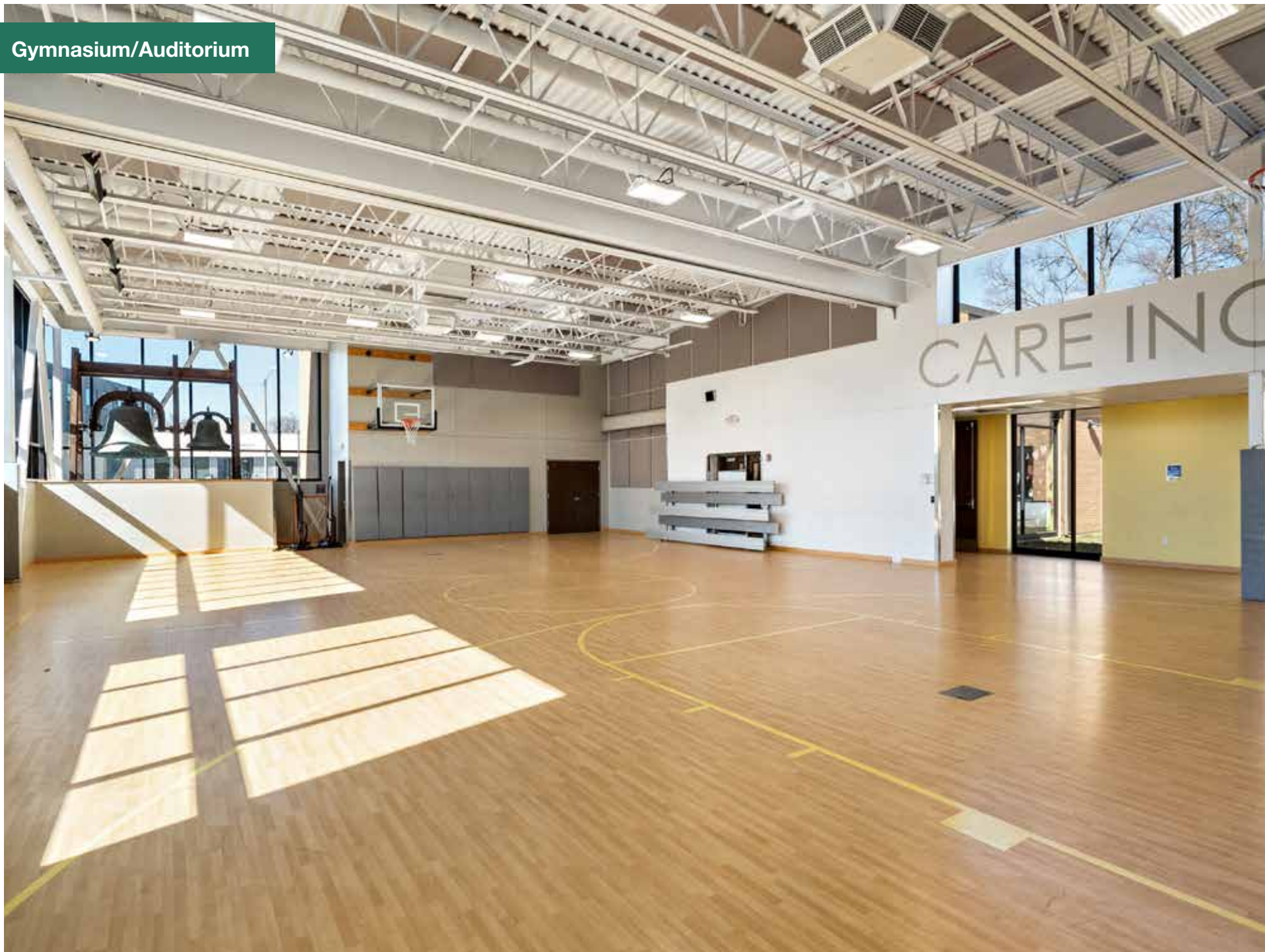
ADA Elevator



Security



Gymnasium/Auditorium



Classroom



Library



Cafeteria/Kitchen

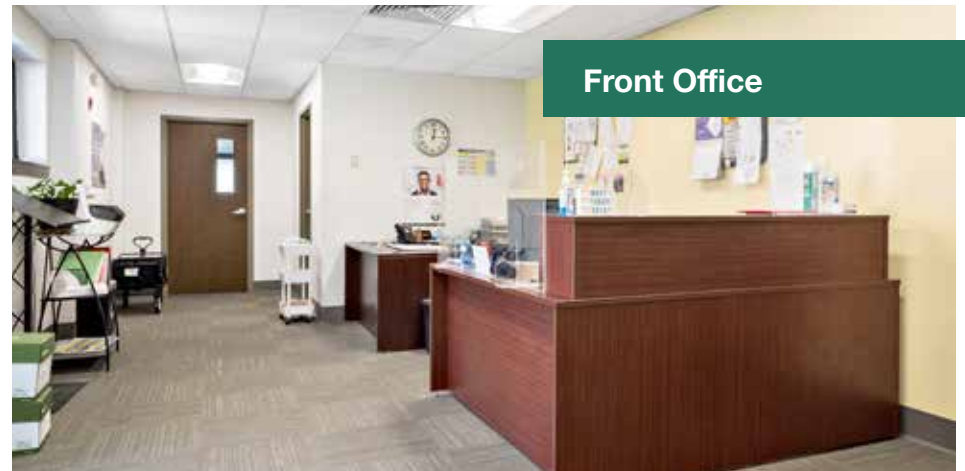


Am
Amenities

Lab



Front Office

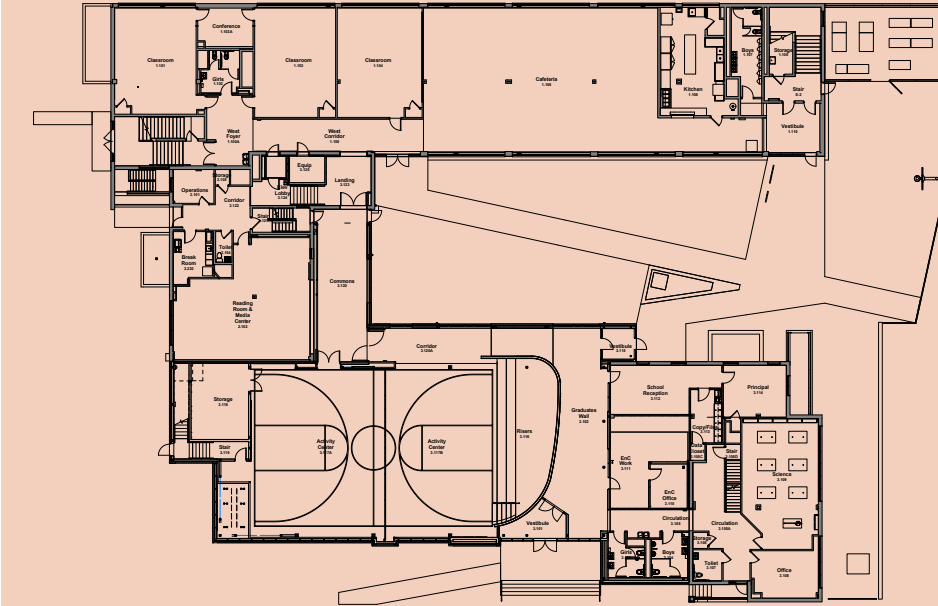


Fp

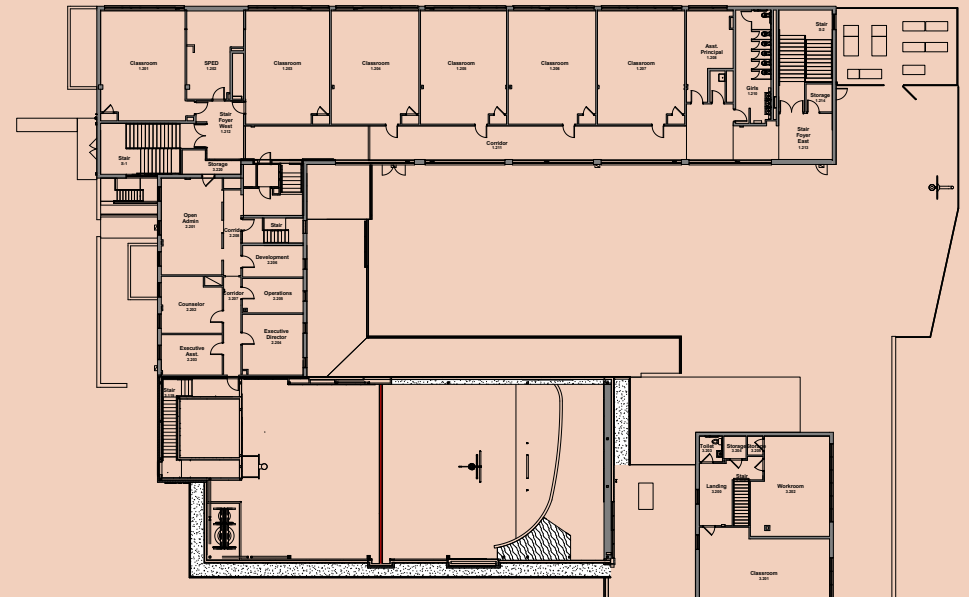
Floorplans



First Floor



Second Floor



1106 N. Jefferson
La Salle Middle School



Parcel 1

1100-1110 N. Jefferson – parcel ID
6484-9-010 – land area 0.84 acres

Parcel 2

2301 Carr Street – parcel ID 6484-
9-150 – land area 1.0 acres

Total Property

approximately 32,000sf building
located on 1.84 acres



MAP KEY

-  Schools
-  Neighboring Business
-  Parks
-  Points of Interest

New NGA Campus

Blewett Middle School

Jefferson Elementary

Gateway Elementary

DeSoto Park

1106 N. Jefferson

Carr Lane VPA

N. JEFFERSON

KIPP Academy



MLS Stadium
Jefferson Connector



Contact

David Biales, CCIM

Managing Director

+1 314 393-4393

david.biales@jll.com

jll.com/st-louis