



UNDER CONSTRUCTION!

CREEKMORE MEDICAL OFFICE PARK

12900 Patterson Avenue Richmond, VA 23238

Charlie Polk, SIOR
Executive Managing Director

T +1 804 200 6419
charlie.polk@jll.com

Scott P. Harrison, SIOR
Vice President

T +1 804 200 6435
scott.harrison@jll.com

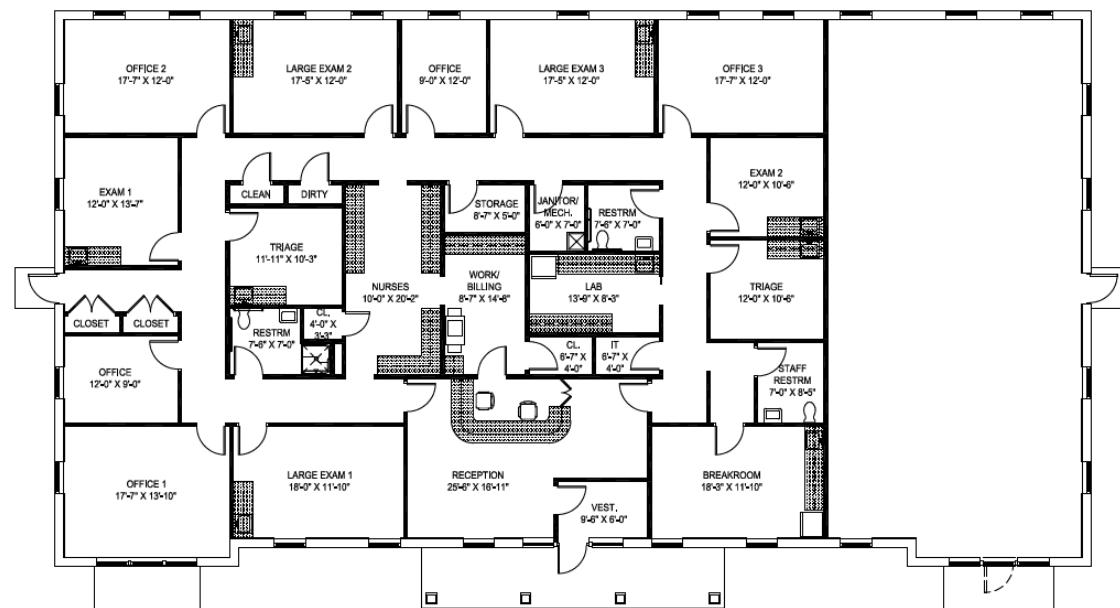
Kaylin Phillips
Associate

T +1 804 802 6125
kaylin.phillips@jll.com



CREEKMORE OFFICE PARK

- > MEDICAL OFFICE CONDOS FOR SALE OR LEASE
- > TURN KEY* OR COLD SHELL DELIVERY
- > 6 BUILDINGS TOTALING 36,000 SF
- > THE PARK WILL CONSIST OF 6,000 SF CONDOS
- > Q4 2022 DELIVERY
- > R-O ZONING
- > LOCATED JUST OFF ROUTE 288, ONLY A 6-MINUTE DRIVE FROM SHORT PUMP
- > CLASS A MEDICAL OFFICE
- > CALL FOR PRICING



***SAMPLE TURN KEY FLOOR PLAN**

Charlie Polk, SIOR
Executive Managing Director

Scott P. Harrison, SIOR
Vice President

Kaylin Farruggio
Associate

T +1 804 200 6419
charlie.polk@jll.com

T +1 804 200 6435
scott.harrison@jll.com

T +1 804 802 6125
kaylin.phillips@jll.com



PROPERTY AERIALS



3 buildings left

Charlie Polk, SIOR
Executive Managing Director

Scott P. Harrison, SIOR
Vice President

Kaylin Farruggio
Associate

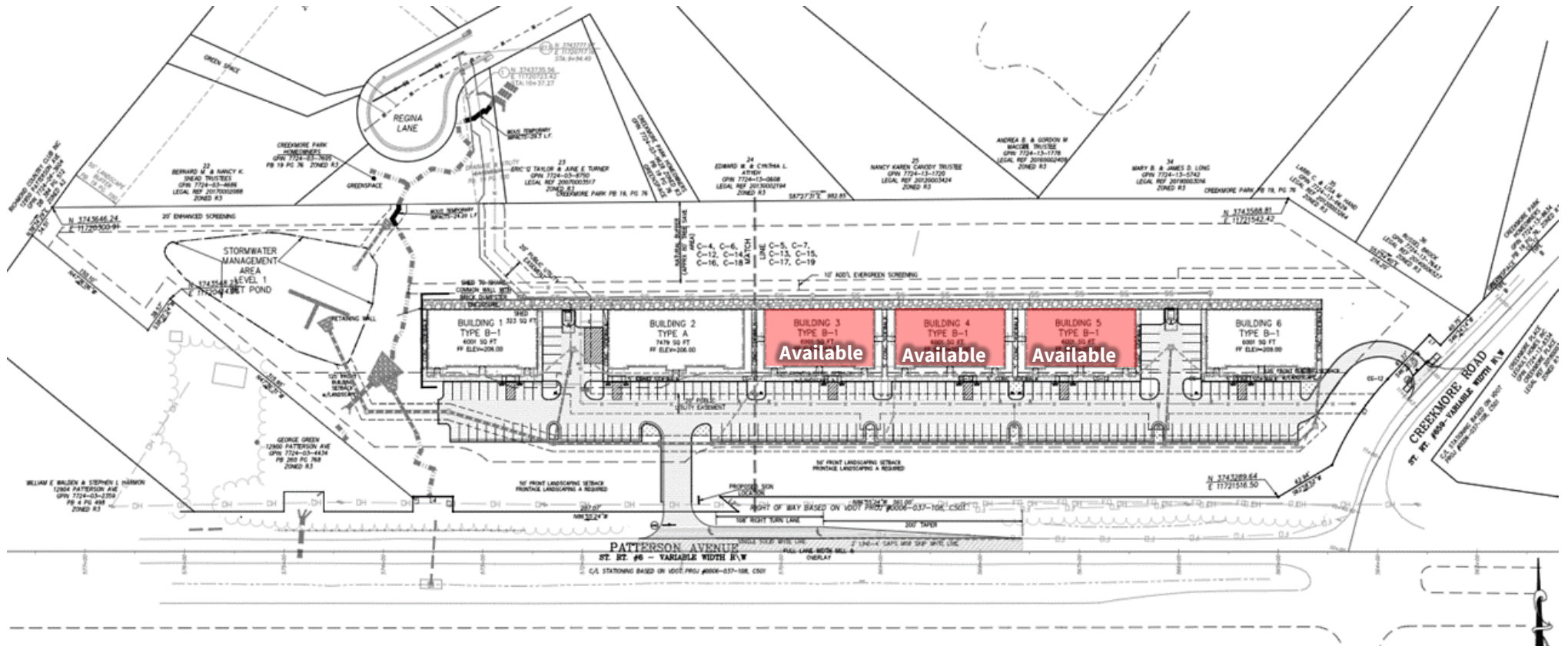
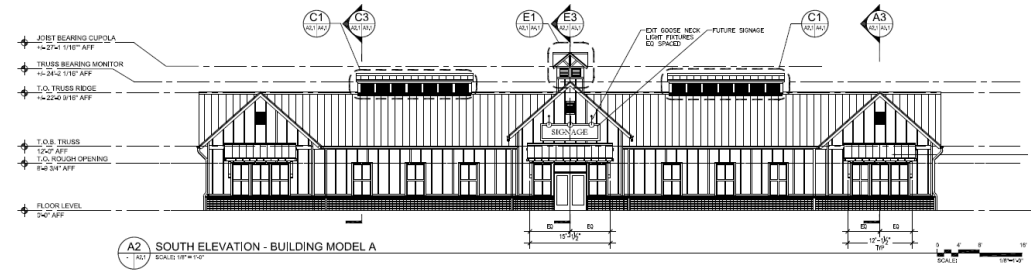
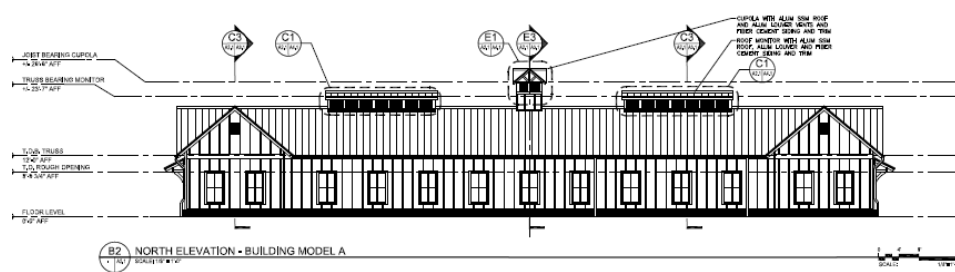
T +1 804 200 6419
charlie.polk@jll.com

T +1 804 200 6435
scott.harrison@jll.com

T +1 804 802 6125
kaylin.phillips@jll.com



SITE PLAN AND ELEVATIONS



Charlie Polk, SIOR
Executive Managing Director

Scott P. Harrison, SIOR
Vice President

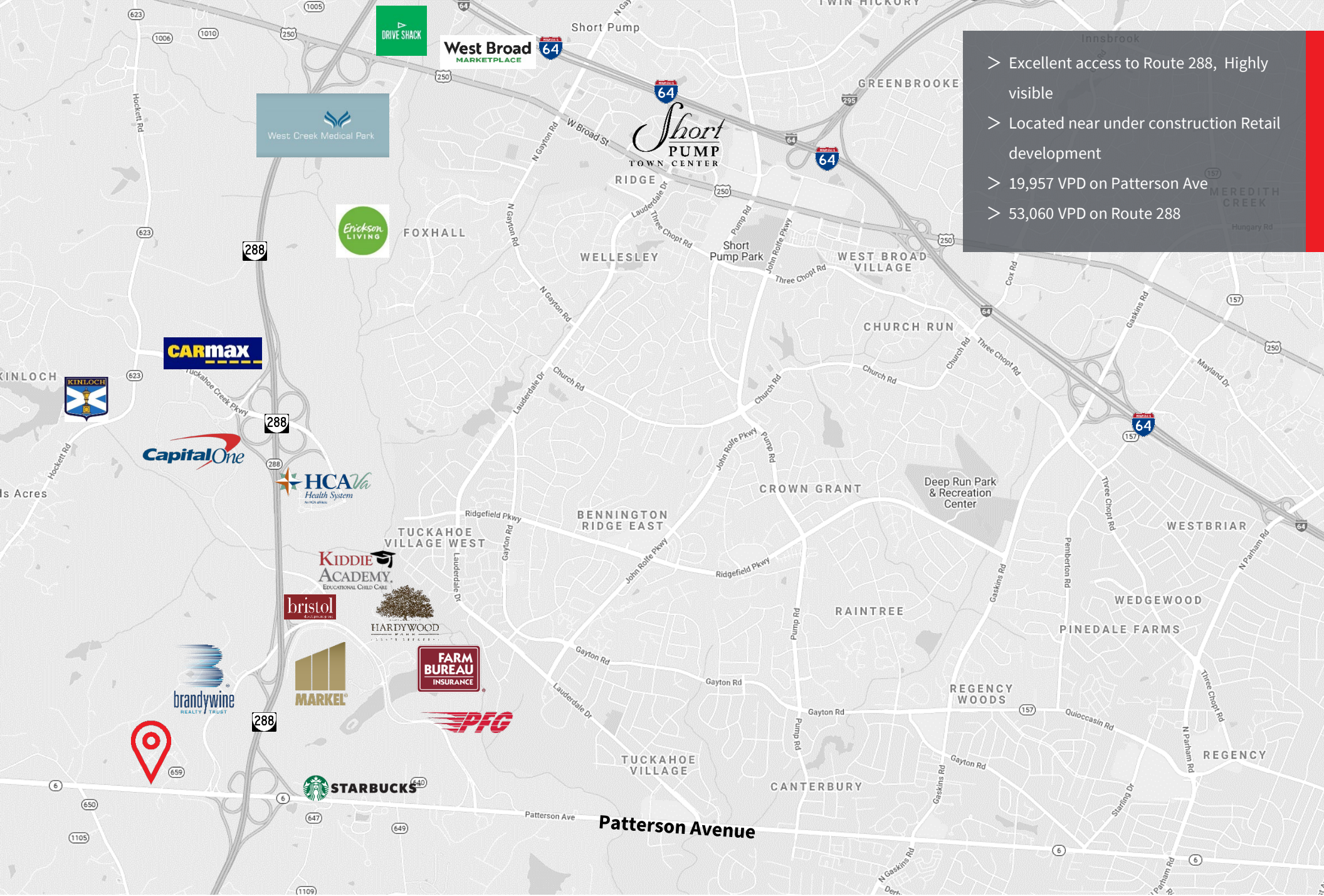
Kaylin Farruggio
Associate

T +1 804 200 6419
charlie.polk@jll.com

T +1 804 200 6435
scott.harrison@jll.com

T +1 804 802 6125
kaylin.phillips@jll.com





- > Excellent access to Route 288, Highly visible
- > Located near under construction Retail development
- > 19,957 VPD on Patterson Ave
- > 53,060 VPD on Route 288

Charlie Polk, SIOR
Executive Managing Director

T +1 804 200 6419
charlie.polk@jll.com

Scott P. Harrison, SIOR
Vice President

T +1 804 200 6435
scott.harrison@jll.com

Kaylin Farruggio
Associate

T +1 804 802 6125
kaylin.phillips@jll.com

Although information has been obtained from sources deemed reliable, JLL does not make any guarantees, warranties or representations, express or implied, as to the completeness or accuracy as to the information contained herein. Any projections, opinions, assumptions or estimates used are for example only. There may be differences between projected and actual results, and those differences may be material. JLL does not accept any liability for any loss or damage suffered by any party resulting from reliance on this information. If the recipient of this information has signed a confidentiality agreement with JLL regarding this matter, this information is subject to the terms of that agreement. ©2023. Jones Lang LaSalle IP, Inc. All rights reserved.

