



For Lease

20,000 SF For Lease

- Building Size: 42,271 (Net Interior SF)
- Building Year: 1997
- Available SF: Approx. 20,000 SF
- Parking Available: Approx. 11 Spaces
- Proposed Rental Rate : \$6.00 PSF MG

**2711 Legion Road
Erie, PA 16505**

Randy Rydzewski
+1 814 833 1000
Rydzewski@howardhanna.com.

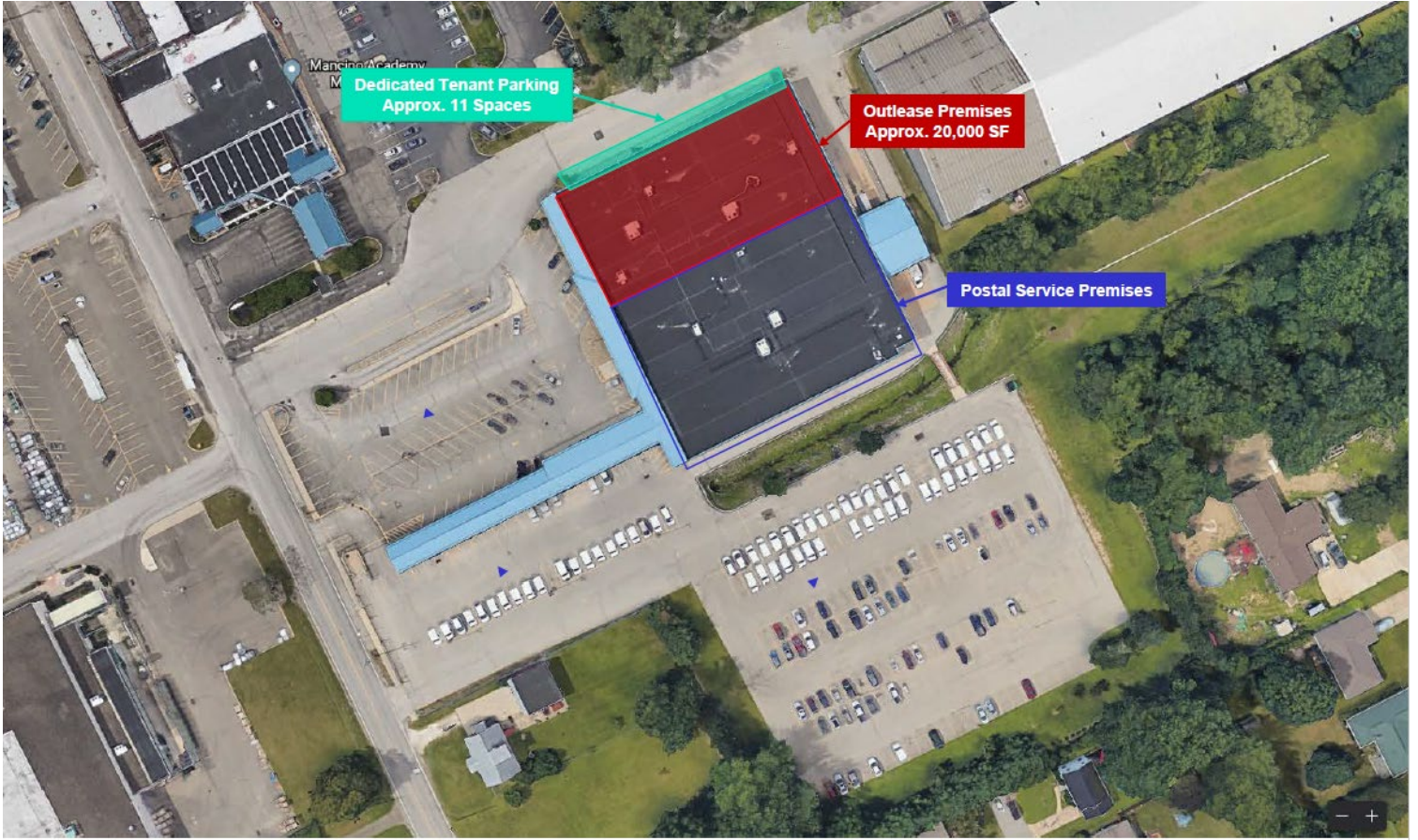
Jeanne Davis
++1 212 418 2604
Jeanne.Davis@am.jll.com

Disclaimer

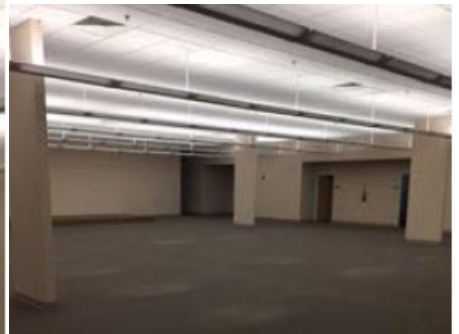
2017 Jones Lang LaSalle IP, Inc. All rights reserved. All information contained herein is from sources deemed reliable; however, no representation or warranty is made to the accuracy thereof.



Building Location

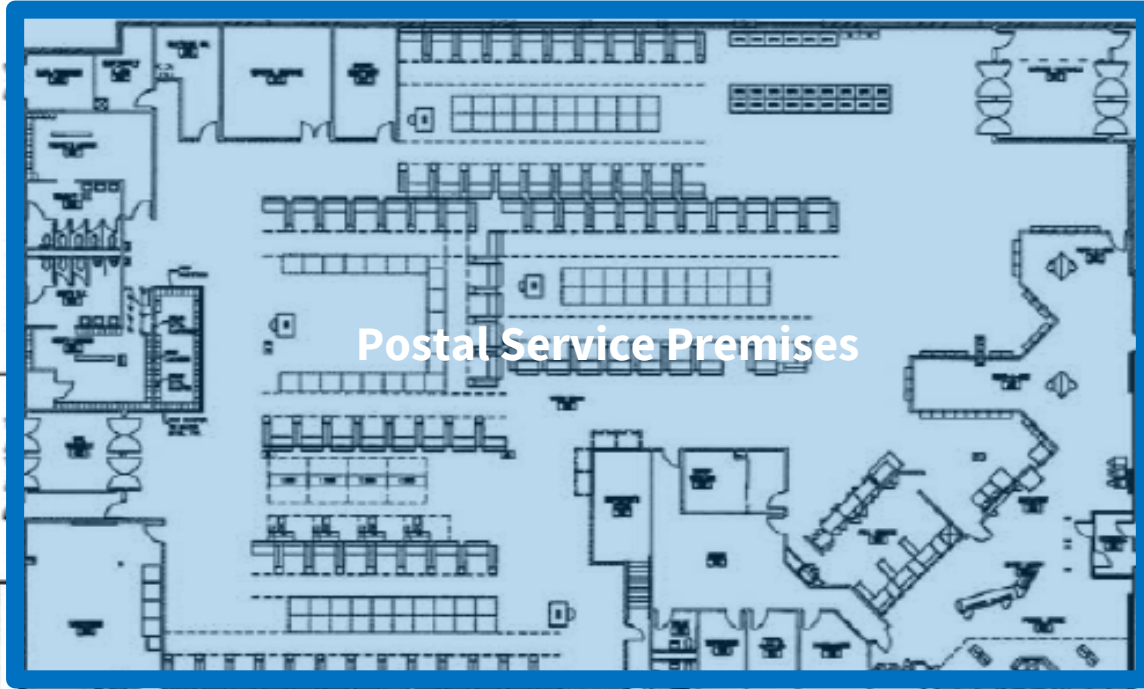


Interior Photos



Floorplan – Vacant and Postal

Presque Isle Branch Office



Postal Service Premises



Outlease Premises
Approx. 20,000 SF