

9100 KEYSTONE CROSSING



BUILDING DESCRIPTION

Year completed	1984
Size	8 stories, 176,281 square feet
County	Marion County
Zoning	C4, Community-Regional Commercial District
Renovated	2006

STRUCTURE

Typical floor	22,200 square feet
Ceiling height	Slab-to-slab 12'6"
	Finished 12' on first floor, 8'6" typical

TRANSPORTATION

Highway	Immediate access to I-465 and Keystone Avenue
Airport	24 miles to Indianapolis International Airport
Parking	672 surface

ELEVATORS / DOCK

Passenger	Three
Freight	One
Loading dock	Yes

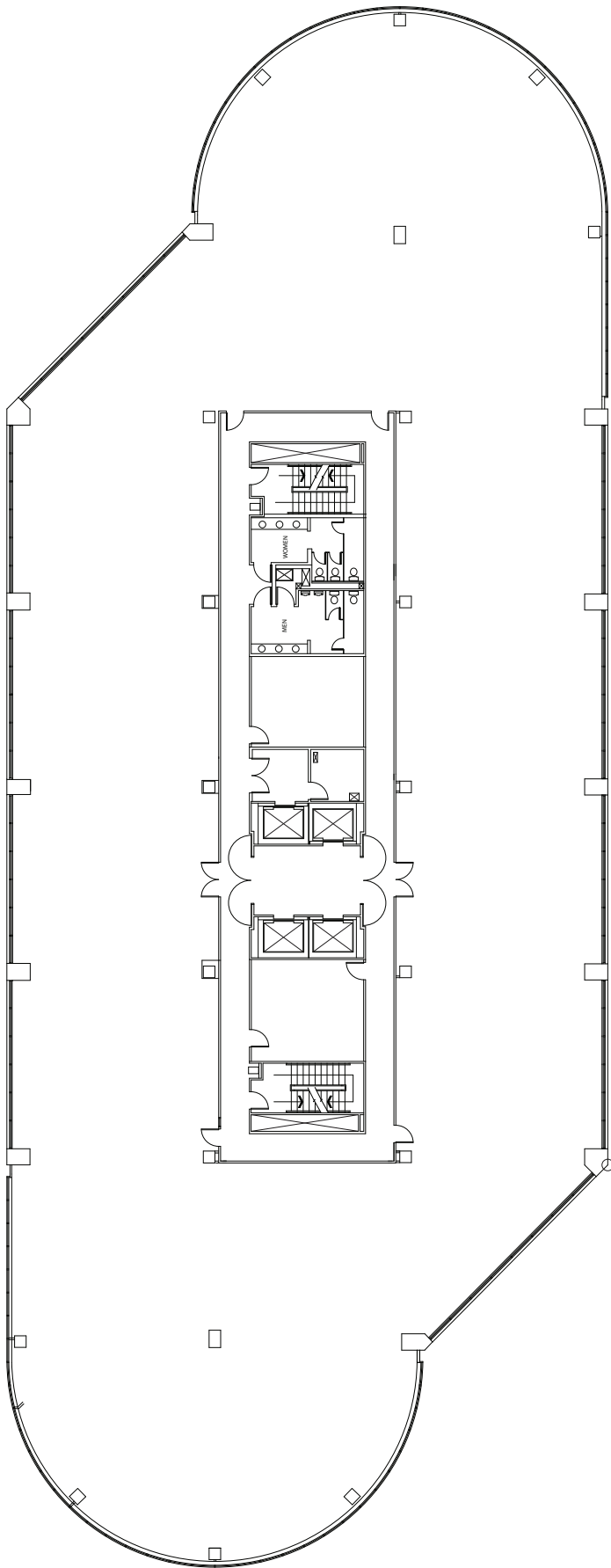
BUILDING SYSTEMS

HVAC	Hydronic heat pump, one zone per 1,000 square feet
Electrical	6 watts per square foot, two panels per floor
Fire / life safety	Esco EST 3
Security	Honeywell electronic access system
Fiber optics	Fiber "Lit" building Comcast cable

BUILDING TEAM

Owner	M&J Wilkow
Property Manager	M&J Wilkow
Original architect	Wright, Porteous & Lowe/Bonar
Leasing contact	John R. Robinson, JLL +1 317.810.7172 Abby Zito, JLL +1 371.810.7173





9100 Keystone Crossing

Typical floorplan