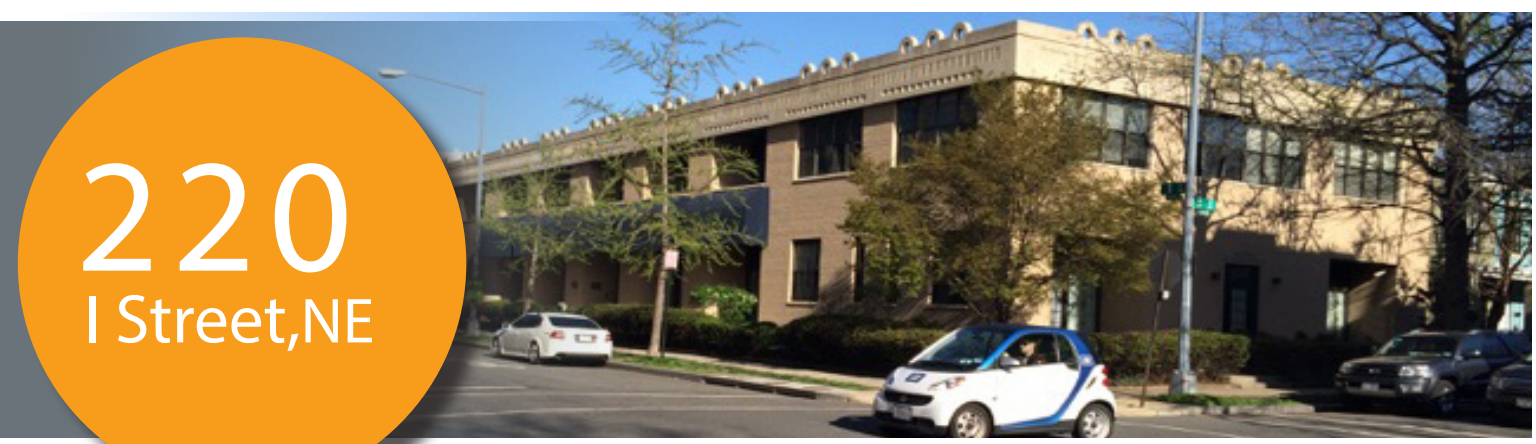


220
I Street, NE



DISTINCTIVE FEATURES

- Unique industrial feel
- Loft-like space
- Vaulted ceilings
- Private terraces, suite #210 / #290 only
- Ideal space for marketing/PR companies, tech-start ups and design/architecture Firms
- Open, collaborative working environment



PROPERTY FEATURES

- Onsite building engineer
- Numerous neighborhood amenities
- Parking available at 900 2nd Street, NE
- Within 8 blocks to the United States Capitol Building
- Access to Union Station metro, (red) line.



Interior photo of suite #280

Available:

Suite	Size / RSF	Possession	Rate
210	1,169	Immediate	\$35.00 FS + Electric
220 - 230	3,408	2/1/2021	\$35.00, FS + Electric

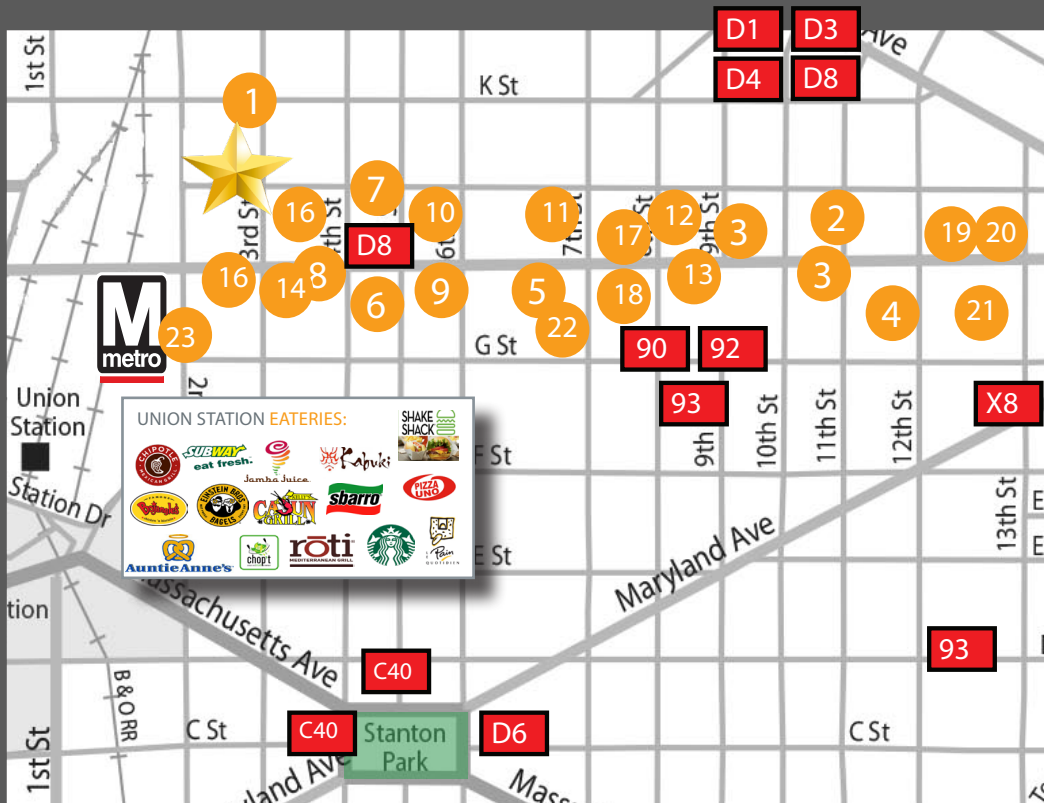
For leasing information, please contact:

Seth A. Benhard
Senior Managing Director
+1 202 719 6238
seth.benhard@am.jll.com

Julia M. Scott
Vice President
+1 202 719 5580
julia.scott@am.jll.com

Maura P. Teschner
Senior Associate
+1 202 719 6213
maura.teschner@am.jll.com





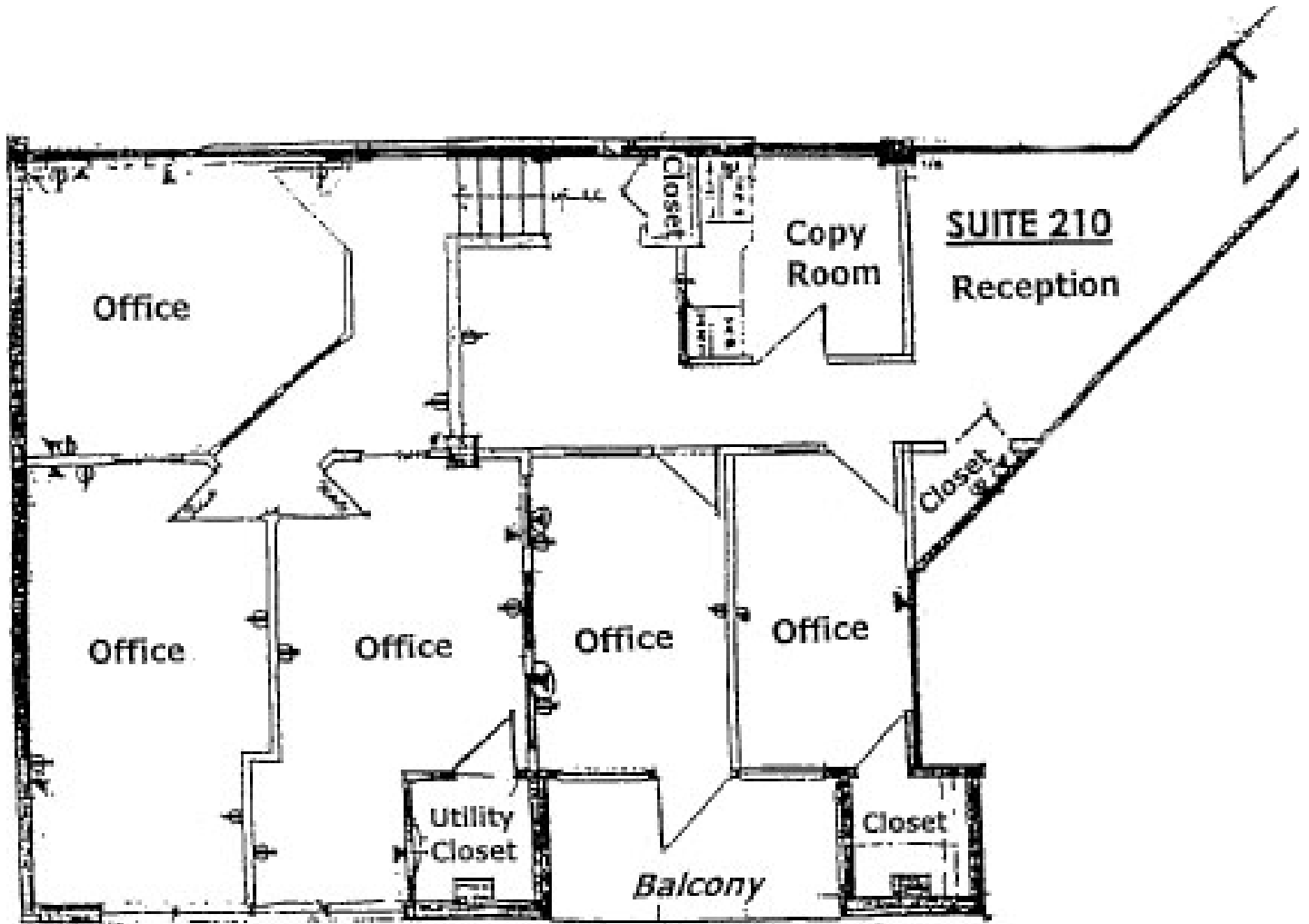
NEARBY BY AMENITIES:

1. Indigo
 2. Little Miss Whiskey's Golden Dollar
 3. Atlas Salon DC
 4. &Pizza
 5. CVS Pharmacy
 6. CAVA
 7. Boundary Road
 8. Ethiopic
 9. DC Harvest
 10. Taste of Jamaica
 11. Hikari Sushi & Saki
 12. Whole Foods Market
 13. NY Pizza Factory
 14. Khepra's Raw food & Juice Bar
 15. Tuscany
 16. Giant food store
 17. Bank of America
 18. Po Boy Jim
 19. Sticky Rice
 20. Toki Underground
 21. Smith Commons
 22. CVS
 23. Parking - 900 2nd Street, NE
- = Bus Routes

Floor Plans

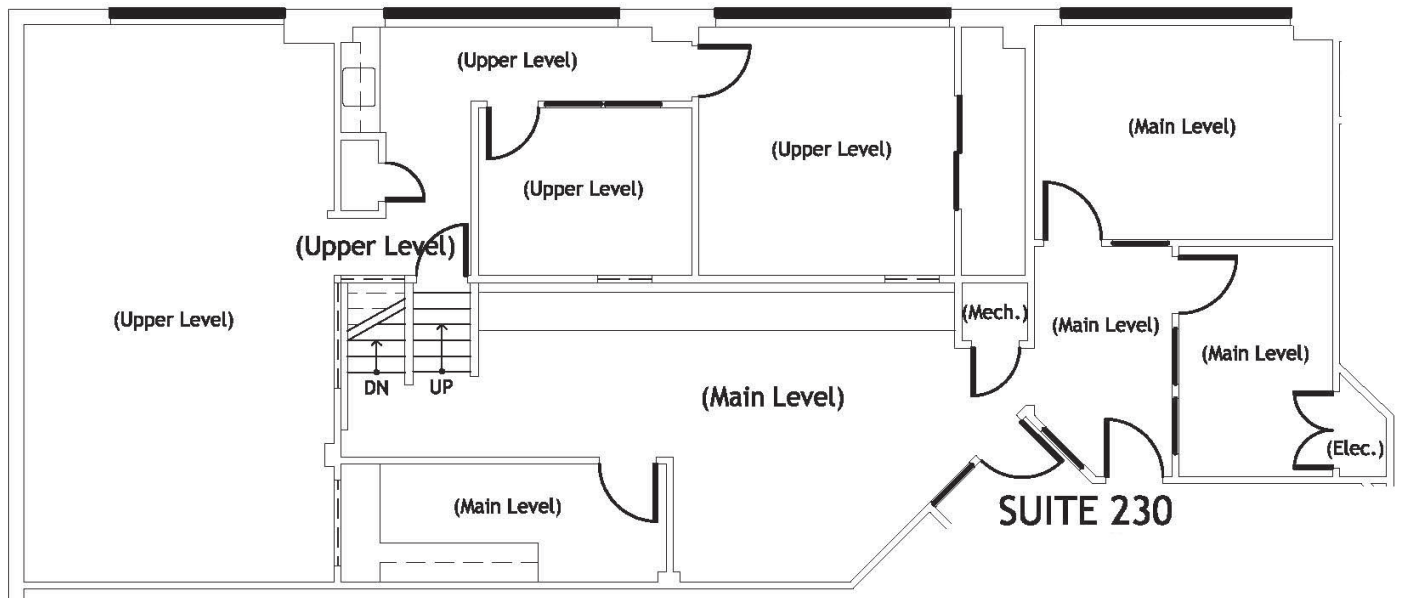
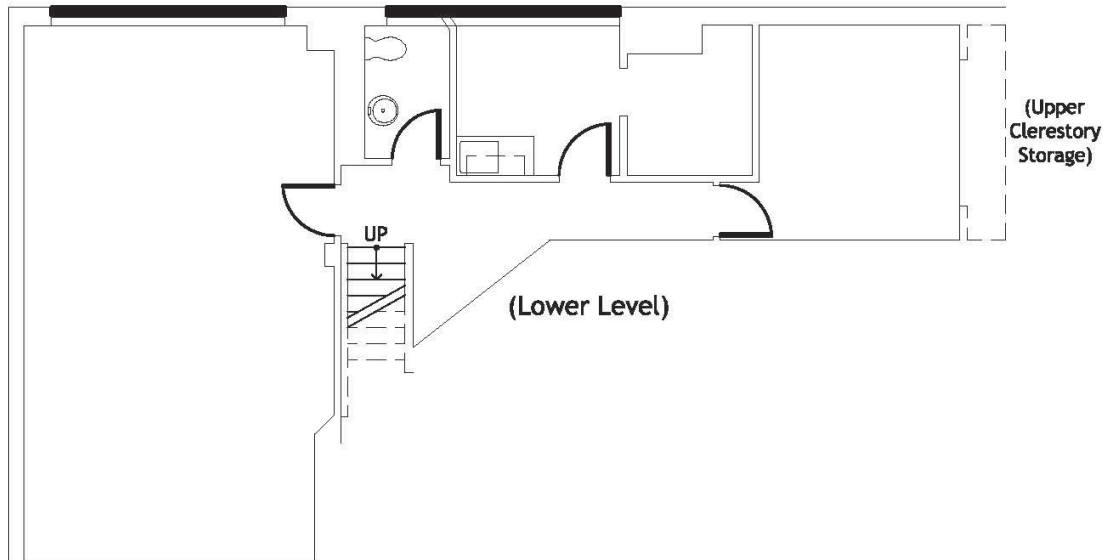


Suite 210
As-Built
1,169 SF



Suite 220-230

As-Built
3,408 SF



DISCLAIMER

© 2021 Jones Lang LaSalle IP, Inc. All rights reserved. No part of this publication may be reproduced by any means, whether graphically, electronically, mechanically or otherwise howsoever, including without limitation photocopying and recording on magnetic tape, or included in any information store and/or retrieval system without prior written permission of Jones Lang LaSalle IP, Inc.