



For Sublease

Park 270 Building I - Up to ±23,026 SF on 3rd Floor

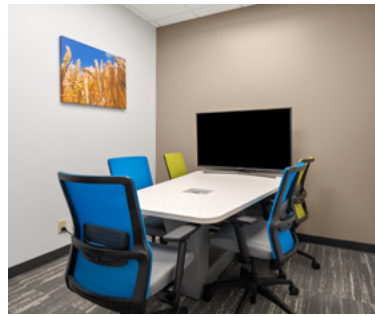
1807 Park 270 Drive | Maryland Heights, MO 63146

Jones Lang LaSalle Americas, Inc., a licensed real estate broker in 48 states



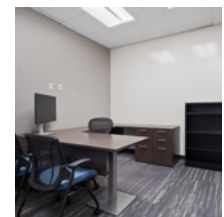
Availability

- **Up to ±23,026 SF** on 3rd Floor
- Divisible to ±8,103 SF
- Large, open floor plan
- Large kitchen/gathering area along with 2 other smaller kitchen/breakrooms
- Four larger conference rooms and several other smaller collaboration rooms
- Furniture available
- Sublease term through January 31, 2028
- **Call broker for pricing**



Building highlights

- Class A building in Westport
- On-site café
- Renovated fitness center and conference room
- Covered outdoor courtyard
- On-campus storage options
- Ample surface parking with a 4/1,000 SF ratio
- Excellent I-270 visibility and access



Floor plan

3rd floor



Kitchen/
break rooms



3rd floor
elevator lobby



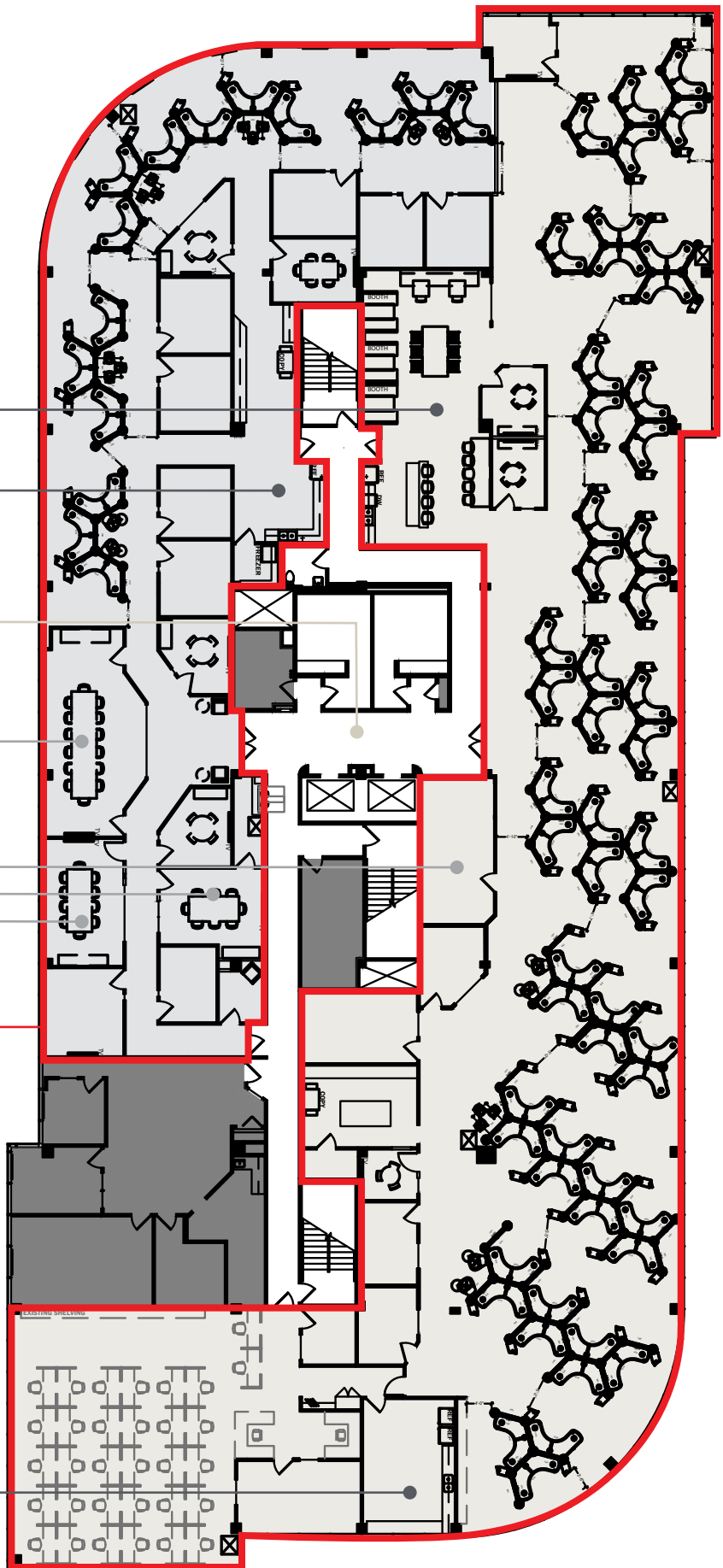
Conference
rooms



Available suite
±23,026 SF (divisible to ±8,103 SF)



Kitchen/
break rooms



DISCLAIMER Although information has been obtained from sources deemed reliable, neither Owner nor JLL makes any guarantees, warranties or representations, express or implied, as to the completeness or accuracy as to the information contained herein. Any projections, opinions, assumptions or estimates used are for example only. There may be differences between projected and actual results, and those differences may be material. The Property may be withdrawn without notice. Neither Owner nor JLL accepts any liability for any loss or damage suffered by any party resulting from reliance on this information. If the recipient of this information has signed a confidentiality agreement regarding this matter, this information is subject to the terms of that agreement. ©2022. Jones Lang LaSalle IP, Inc. All rights reserved.