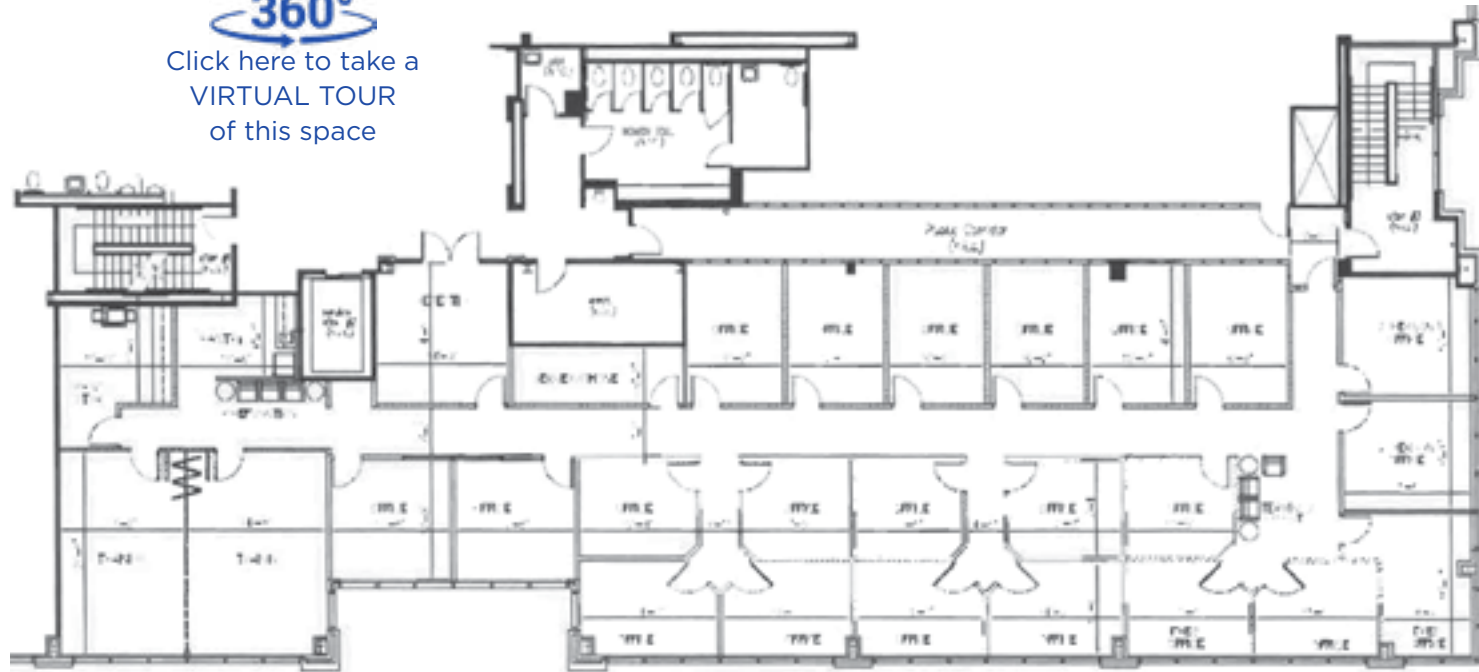


## BUILDING 500

Suite 250 6,422 r.s.f.

- Power - Duke Energy
- Janitorial Services - Building Maintenance Services
- Water - Orange County Utilities
- Natural Gas - TECO (100, 200 & 300)
- IT providers - AT&T, Brighthouse & TW Telecom

**360°**  
Click here to take a  
VIRTUAL TOUR  
of this space



EAST ORLANDO'S  
**premier office park**

**MICAH STRADER**  
+1 407 982 8688  
micah.strader@am.jll.com

