



RCB DEVELOPMENT



For Lease

7410 Northside Drive
North Charleston, SC 29420

- 1,200 - 38,549 r.s.f. for lease
- Newly renovated facade, lobby and common area
- Parking 3.00/1,000 r.s.f.
- 23,618 r.s.f. floor plates
- Convenient access to I-26 via Ashley Phosphate Road Exit 209

For more information, contact:

BRIAN CONNOLLY
Managing Director
brian.connolly@am.jll.com
+1 843 805 5114

JLL Charleston
701 East Bay Street, Suite 308
Charleston, SC 29403

The property



Address	7410 Northside Drive, North Charleston, SC 29420
----------------	--

Rentable s.f.	38,549
----------------------	--------

Parking ratio	3.00/1,000 r.s.f.
----------------------	-------------------

Building r.s.f.	70,854
------------------------	--------

Typical floor plate (r.s.f.)	23,618
-------------------------------------	--------

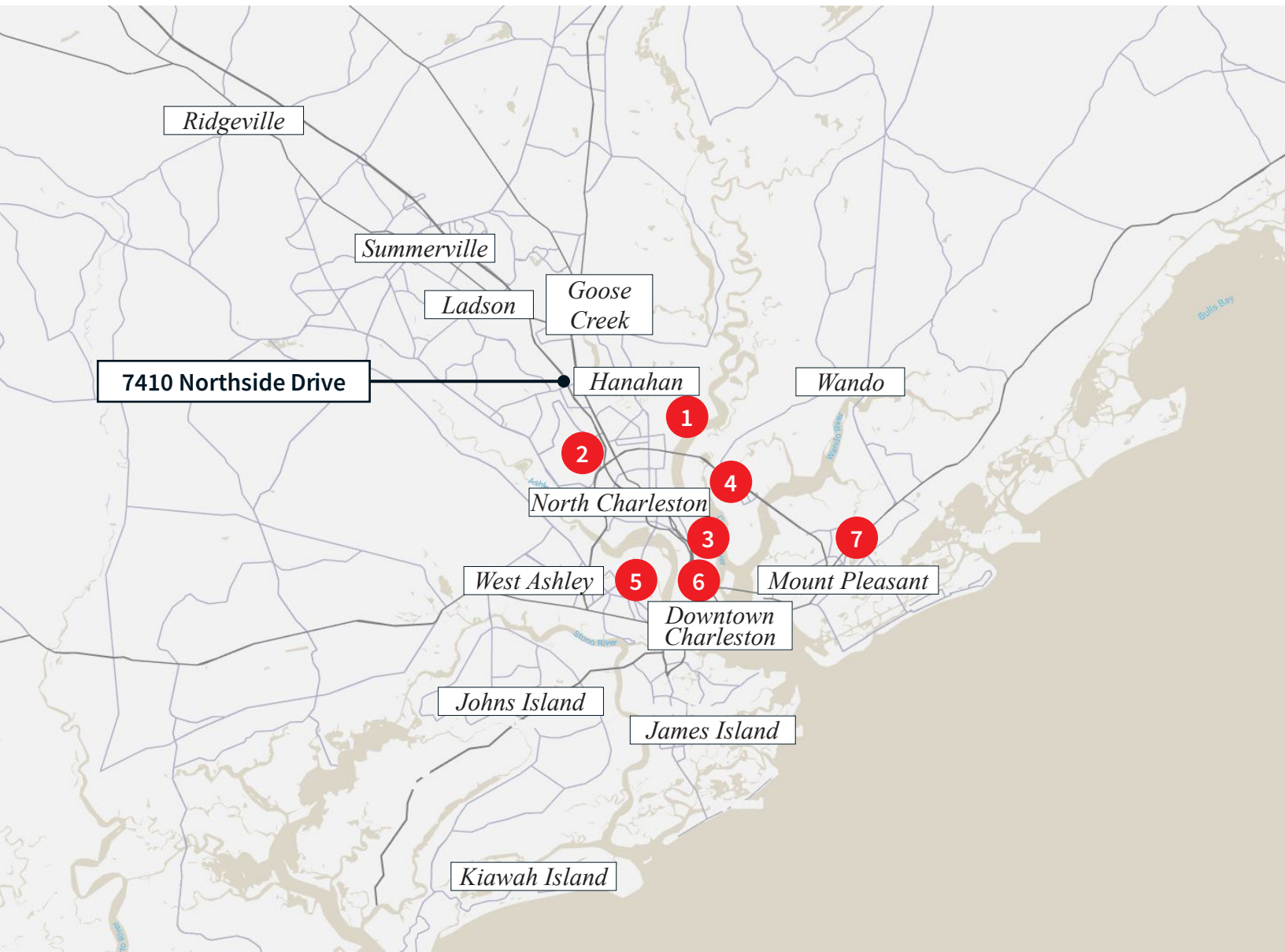
Year built	1984/ 2015/2019
-------------------	-----------------

Location overview

7410 Northside Drive is located in North Charleston just 0.2 miles from I-26. The property is in close proximity to major population bases; downtown, North Charleston, Daniel Island, Mount Pleasant and West Ashley. Accessible via either I-26 or Rivers Avenue, 7410 Northside Drive is connected to the area's major arterial roadways serving a logistical advantage for both businesses and their employees.

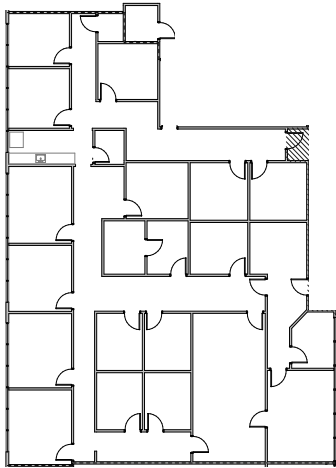
Another location attribute to the property is its close proximity to the commercial districts of North Charleston. Specifically, 7410 Northside Drive is proximate to North Charleston's North Pointe Plaza, North Rivers Town Center, Northwoods Mall, Trident Technical College and numerous apartment complexes. Recognized as one of Charleston's up-and-coming areas, North Charleston draws both residents, businesses and employees alike.

- 1 **5.6** miles to North Charleston Port Terminal
- 2 **7.2** miles to the Charleston International Airport
- 3 **8.3** miles to the new Hugh Leatherman Terminal
- 4 **10.0** miles to Daniel Island
- 5 **10.6** miles to downtown West Ashley
- 6 **12.2** miles to downtown Charleston
- 7 **15.1** miles to downtown Mount Pleasant

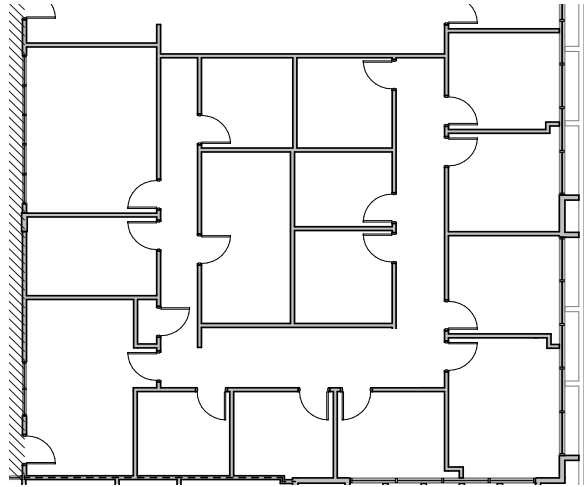


Availabilities

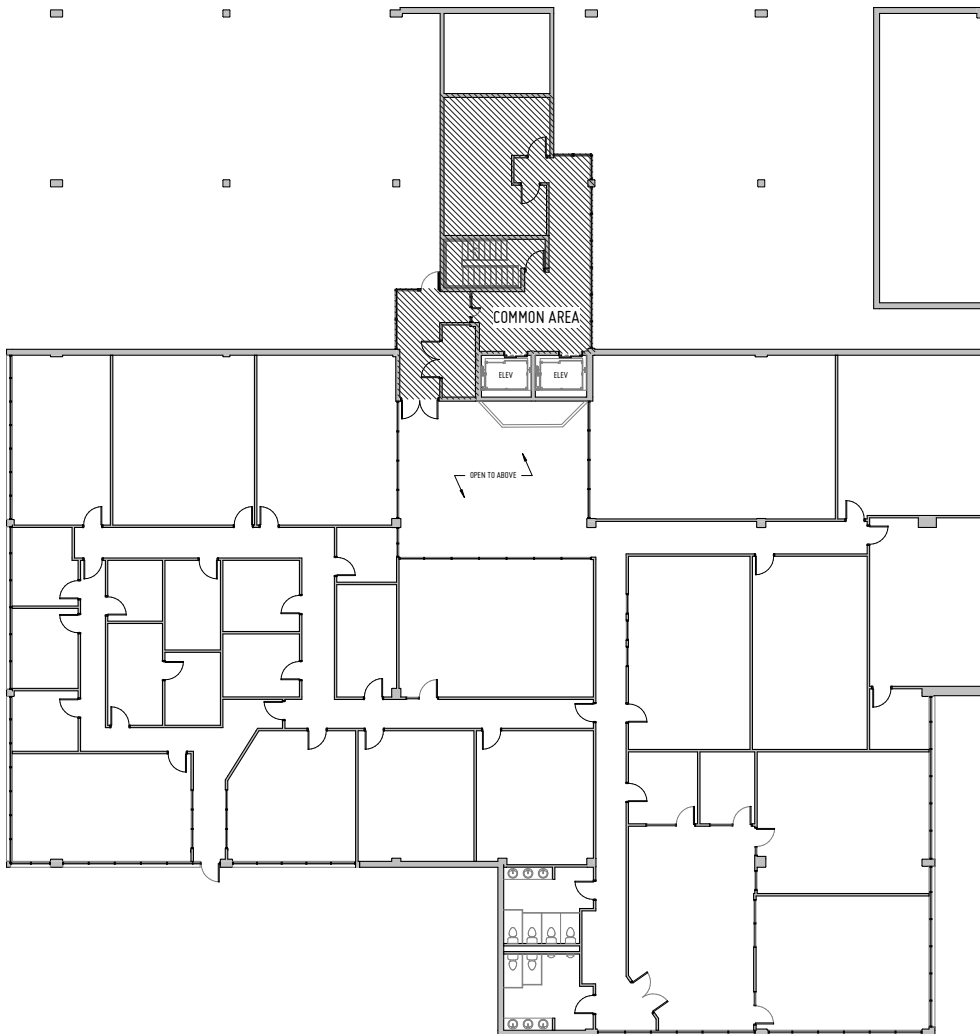
Suite 201 | Second Floor | 2,000 - 5,115 r.s.f



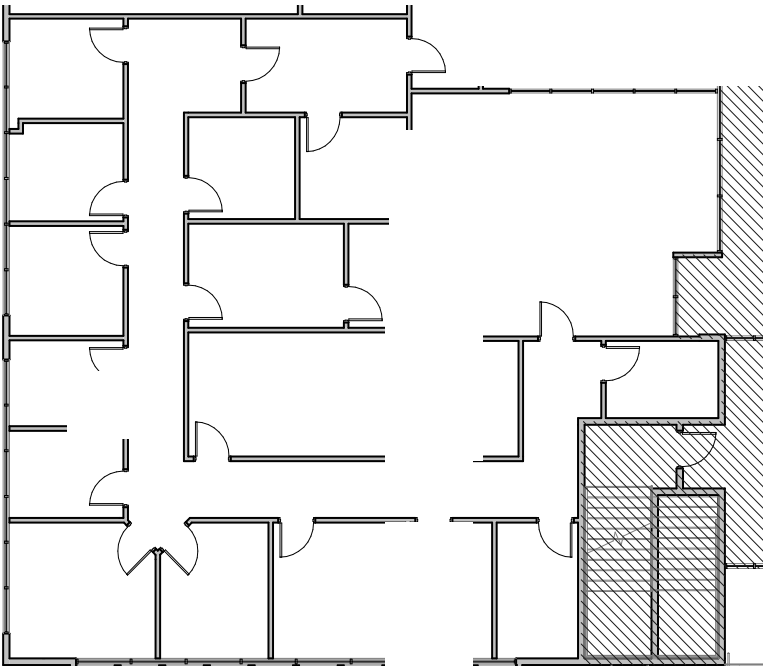
Suite 211 | Second Floor | 3,036 r.s.f



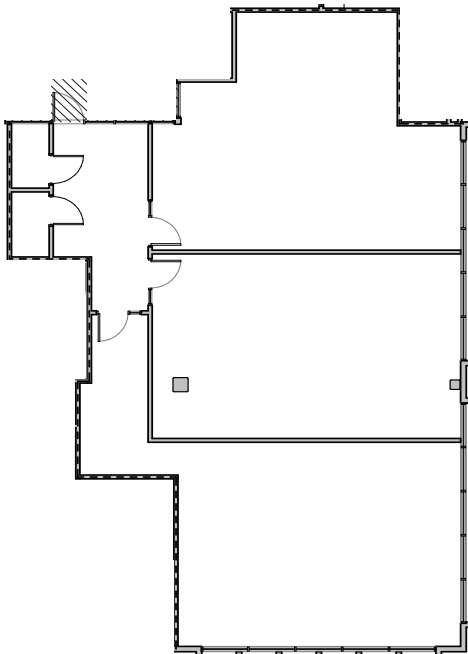
Suite G100 | Ground floor | 17,563 r.s.f. | Available Jan 2022



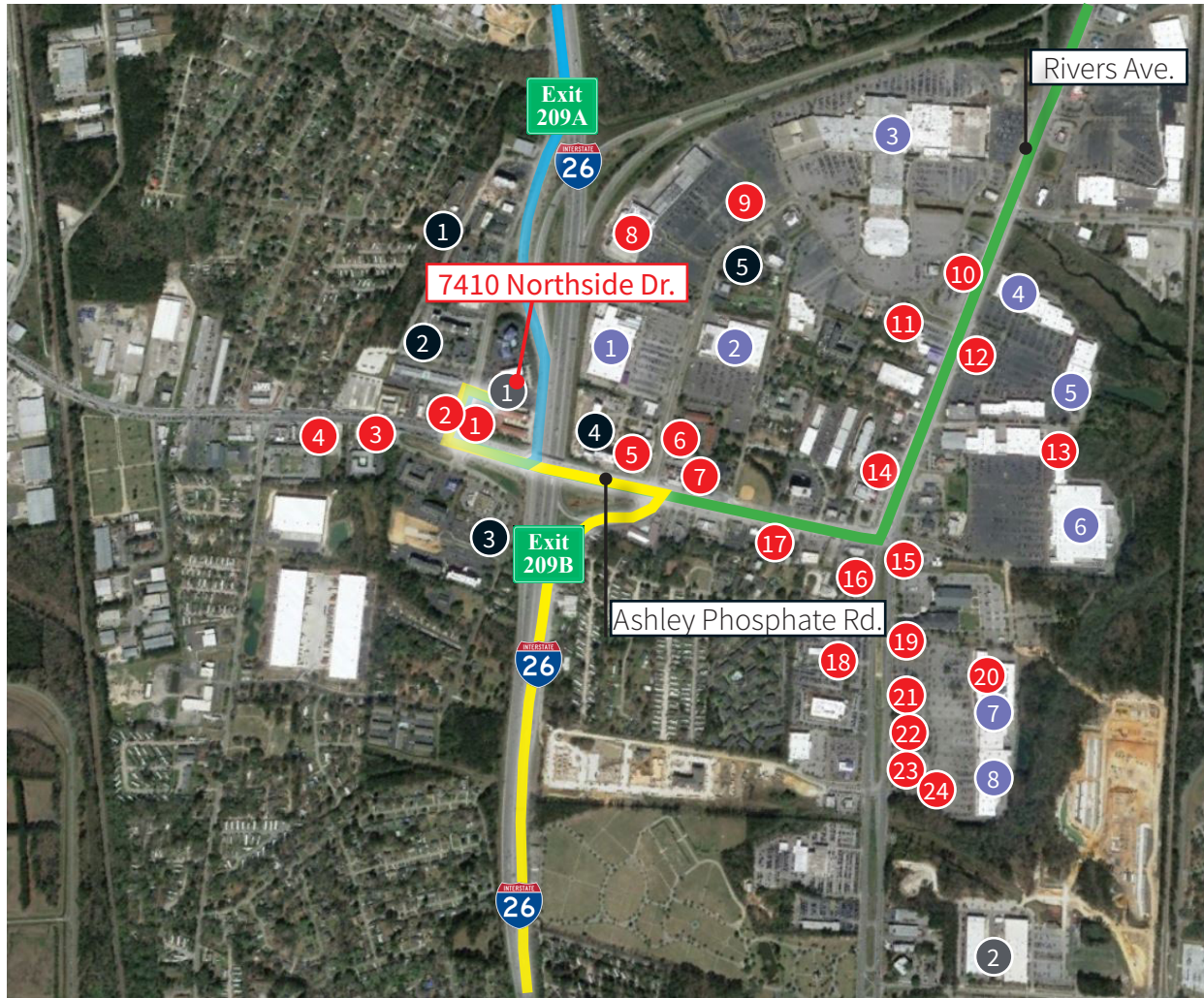
Suite 100 | First Floor | 4,715 r.s.f | Available Jan 2022



Suite 140 | First Floor | 2,673 r.s.f | Available Jan 2022



Access & amenities



Food and Beverage

- 1 Ruby Tuesday
- 2 McDonald's
- 3 Waffle House
- 4 Los Parados
- 5 Taco Bell
- 6 Wendy's
- 7 Denny's
- 8 Penalty Box Sports Lounge
- 9 Mei Thai Restaurant & Sushi Bar
- 10 Olive Garden
- 11 Outback Steakhouse
- 12 Chik-fil-A
- 13 Pizza Hut
- 14 Jimmy John's

- 15 Chipotle Mexican Grill
- 16 Starbucks (1)
- 17 Panera Bread
- 18 Panda Express
- 19 Chuck E. Cheese's
- 20 Starbucks (2)
- 21 LongHorn Steakhouse
- 22 Cold Stone Creamery
- 23 Firehouse Subs
- 24 Smokey Bones Bar & Fire Grill

Education

- 1 ECPI University
- 2 Trident Technical College

Hotel & Lodging

- 1 SpringHill Suites by Marriott
- 2 Fairfield Inn & Suites by Marriott
- 3 Hyatt Place North Charleston
- 4 DoubleTree by Hilton Hotel
- 5 Holiday Inn Express & Suites

Retail

- 1 Lowe's
- 2 The Home Depot
- 3 Northwoods Mall
- 4 Barnes & Noble
- 5 Best Buy
- 6 Walmart Supercenter
- 7 Target
- 8 North Rivers Town Center

Thank you

BRIAN CONNOLLY

Managing Director
JLL Charleston
brian.connolly@am.jll.com
+1 843 805 5114

JLL CHARLESTON

701 East Bay Street
Suite 308
Charleston, SC 29403
+1 843 805 5110
jll.com/charleston