



Development Opportunity

±0.81 acres at corner of Vandeventer & I-44

Property overview

- Available land:** ±0.81 acres level, unobstructed land for sale
- Uses:** Ideal for mixed-use, retail, commercial and/or residential
- Zoning:** "G" local commercial and office zoning
- Tax abatement:** Located in an Enterprise Zone
- Location:** I-44 visibility with 90,00 vehicles per day and access via exit ramp, at entrance to the Botanical Heights neighborhood with MOBOT and Tower Grove Park to the south and the Grove to the north
- Asking price:** \$1,300,000

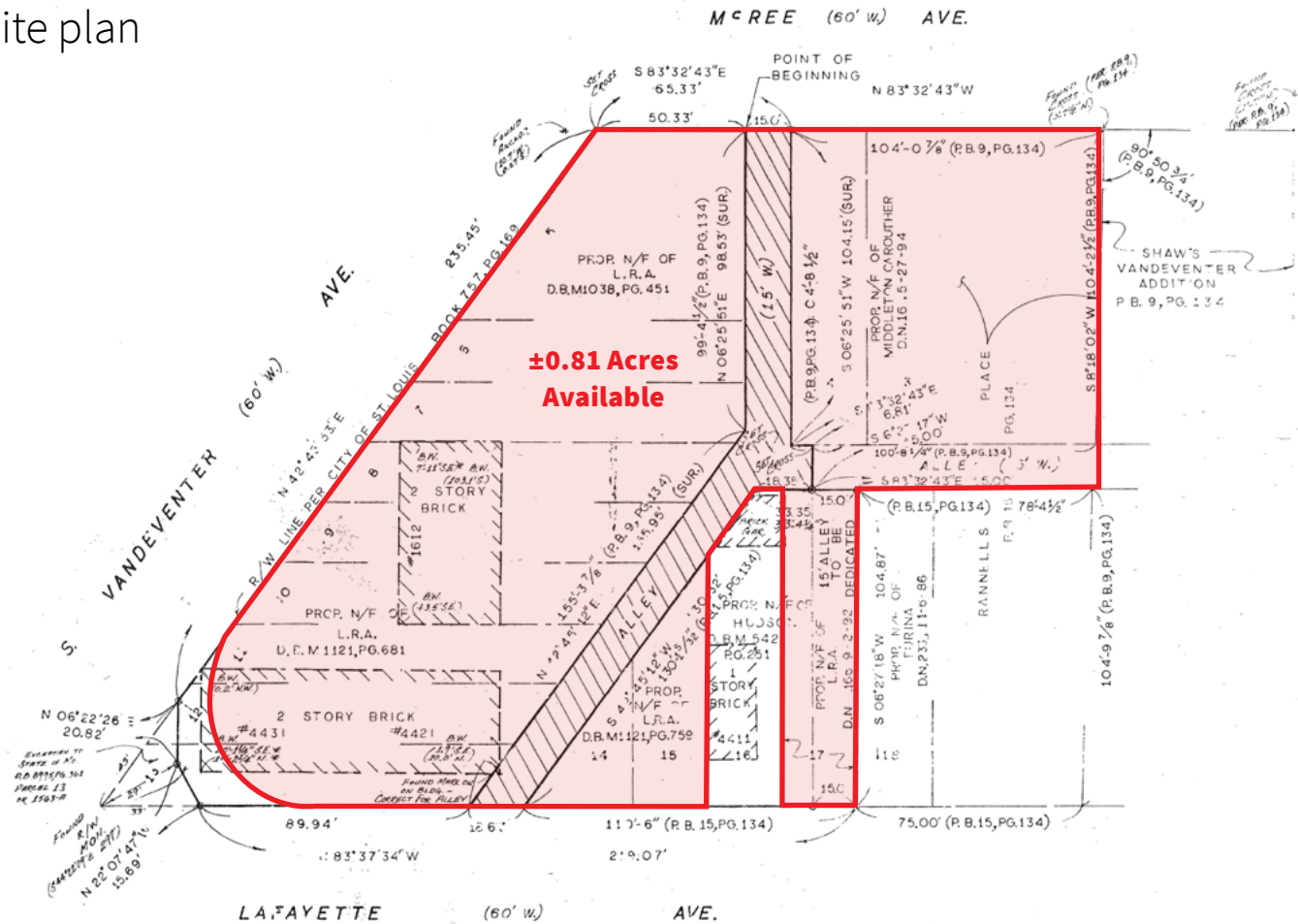
**1600-1612 S. Vandeventer Ave.
St. Louis, MO 63110**

Will Meehan
+1 314 202 8626
will.meehan@am.jll.com

Christopher Taff
+1 314 338 2086
christopher.taff@am.jll.com

jll.com/st-louis

Site plan



Contact

Will Meehan

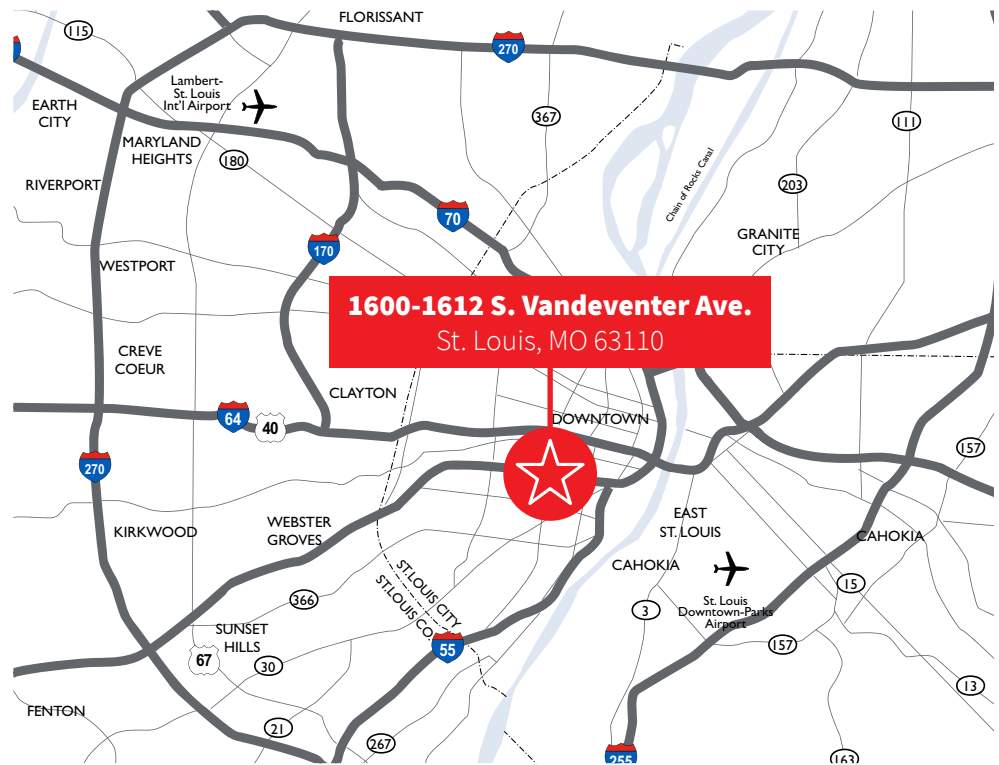
+1 314 202 8626
will.meehan@am.jll.com

Christopher Taff

+1 314 338 2086
christopher.taff@am.jll.com

jll.com/st-louis

+1 314 338 2080



Jones Lang LaSalle Americas, Inc., a licensed real estate broker in 48 states | **DISCLAIMER** Although information has been obtained from sources deemed reliable, neither Owner nor JLL makes any guarantees, warranties or representations, express or implied, as to the completeness or accuracy as to the information contained herein. Any projections, opinions, assumptions or estimates used are for example only. There may be differences between projected and actual results, and those differences may be material. The Property may be withdrawn without notice. Neither Owner nor JLL accepts any liability for any loss or damages suffered by any party resulting from reliance on this information. If the recipient of this information has signed a confidentiality agreement regarding this matter, this information is subject to the terms of that agreement. ©2022. Jones Lang LaSalle IP, Inc. All rights reserved.