



# For Sublease

## Property Overview

Available Space: Suite 250: 14,041± RSF (available mid-2022)

Remaining Term: Through October 21, 2028

Rental Rate: \$16.00/SF (FSG with a Base Year)

Parking Ratio: 3.33/1,000 RSF (potential for more)

Property Overview:

- Suburban office park
- Easy access to Loop 410
- Quick access to Interstate 10 interchange
- FF&E available

4440 South Piedras Drive  
San Antonio, Texas 78228

---

**Lisa Mittel**  
Senior Vice President  
+1 210 308 9888  
[Lisa.mittel@am.jll.com](mailto:Lisa.mittel@am.jll.com)

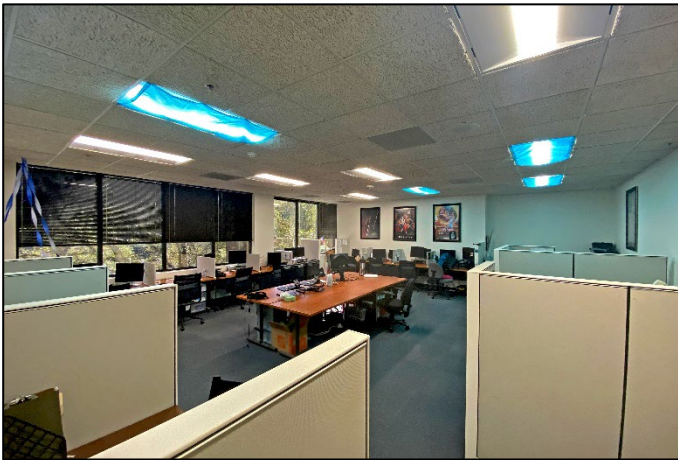
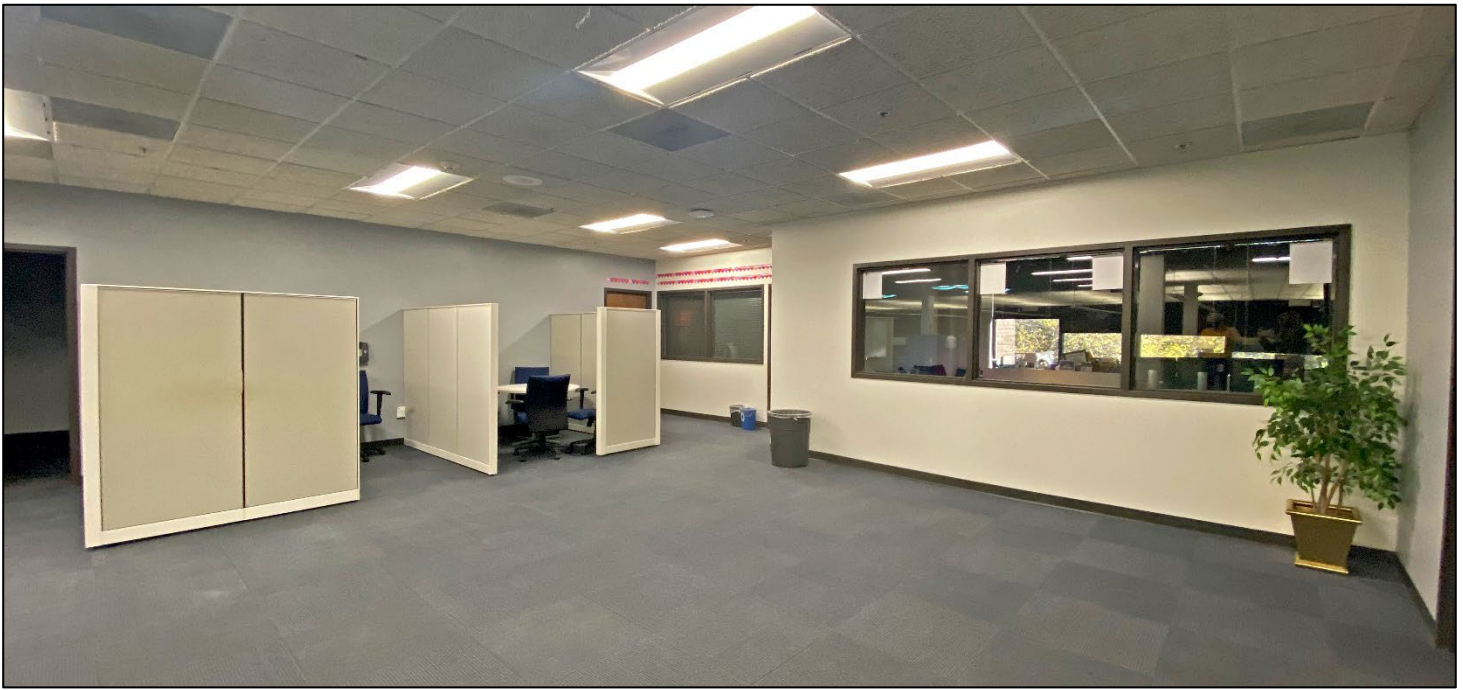
---



Jones Lang LaSalle Brokerage, Inc

\*\*The outbreak of the COVID-19 virus (novel coronavirus) since the end of January 2020 has resulted in market uncertainty and volatility. While the economic impact of a contagion disease generally arises from the uncertainty and loss of consumer confidence, its impact on real estate values is unknown at this stage. Given the prevailing domestic and global uncertainty arising from the Coronavirus, we recommend that the intended recipients of this information regularly seek our guidance

# Property photos: Suite 250



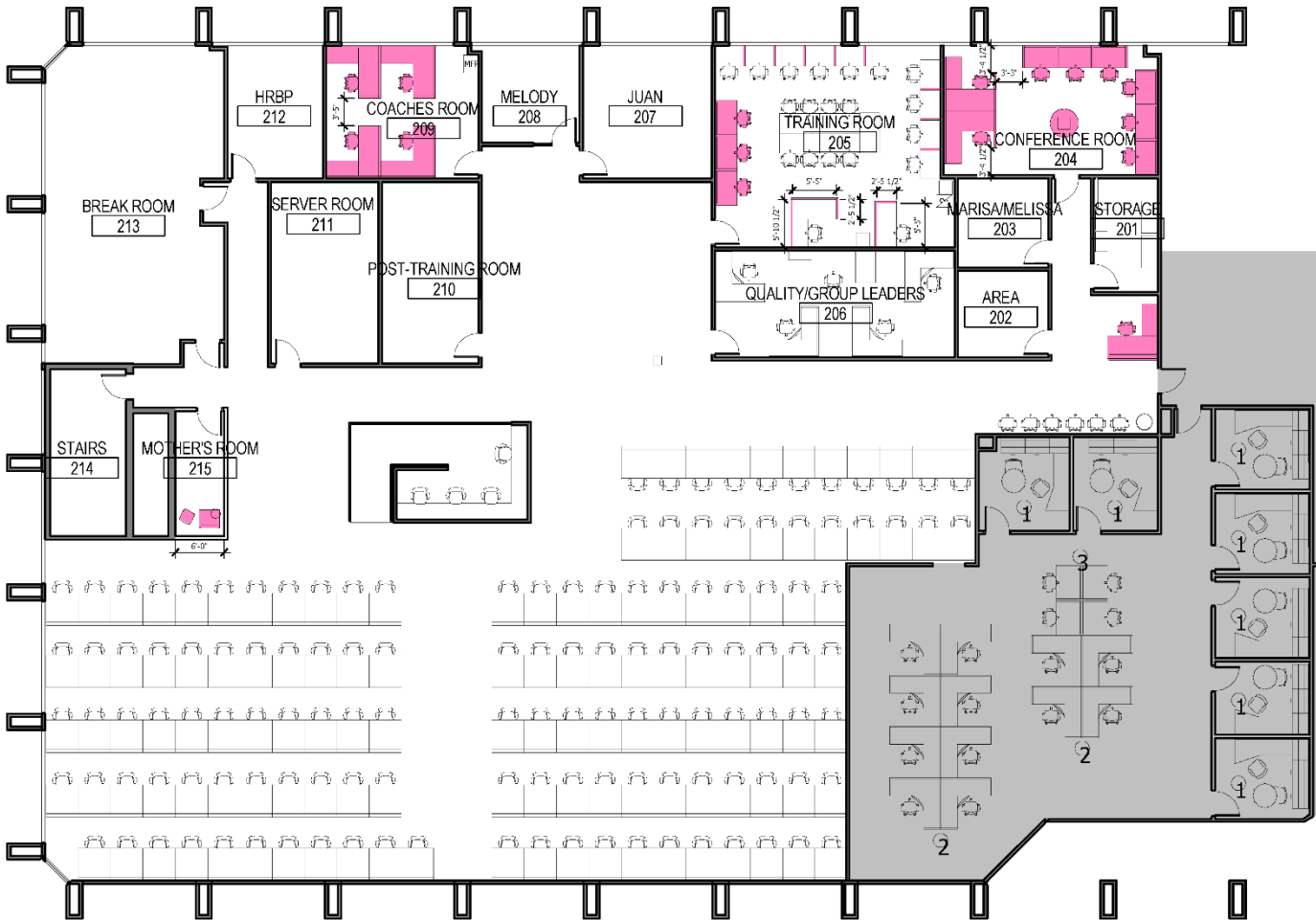
4440 S. Piedras Drive  
San Antonio, Texas

**Lisa Mittel**  
Senior Vice President  
+1 210 308 9888  
[Lisa.mittel@am.jll.com](mailto:Lisa.mittel@am.jll.com)



# Floor plan:

**Suite 250:** 14,041± SF - (Available mid-2022)



For more information, please contact:

**Lisa Mittel**

Senior Vice President

+1 210 308 9888

[Lisa.mittel@am.jll.com](mailto:Lisa.mittel@am.jll.com)