

CANVAS

At Press Blocks

1750 SW YAMHILL ST, PORTLAND, OR



GET READY TO MAKE YOUR MARK

Anchoring Portland's vibrant Stadium District, **Canvas at Press Blocks** is a 140,000 s.f. premier office tower featuring exposed ceilings, open floor plates and high-end finishes.

Thoughtfully designed for the way you want to work, Canvas is the ideal place to write your story and redefine an industry.

PROJECT DETAILS



19,000 SF
floor plates



LOCATION

Directly across the street from Providence Park, Canvas is nestled between Downtown, the Pearl, the West End, and the Alphabet District



CONNECTIVITY

Front-door access to the MAX Red and Blue lines, with easy access to major highways



VIEWS

Rooftop deck and indoor event space with panoramic views of the West Hills



AMENITIES

Secure bike storage, showers, fitness center and lockers



PARKING

Onsite and neighborhood parking at 1.2:1,000



RETAIL

Ground-floor retail with indoor/outdoor experience and sidewalk dining

BUILT FOR TOMORROW'S WORKPLACE

2ND FLOOR SPEC SUITE

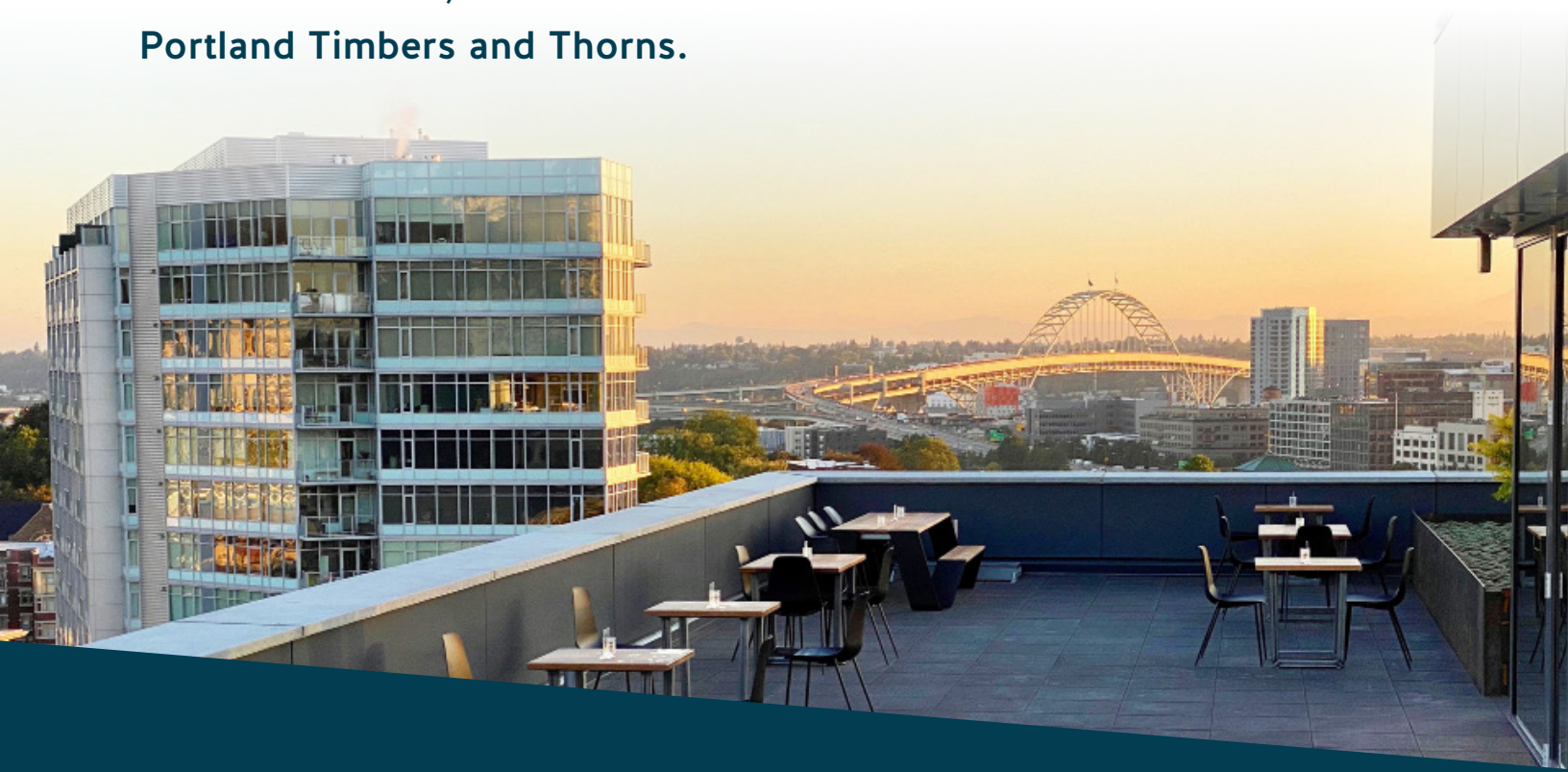
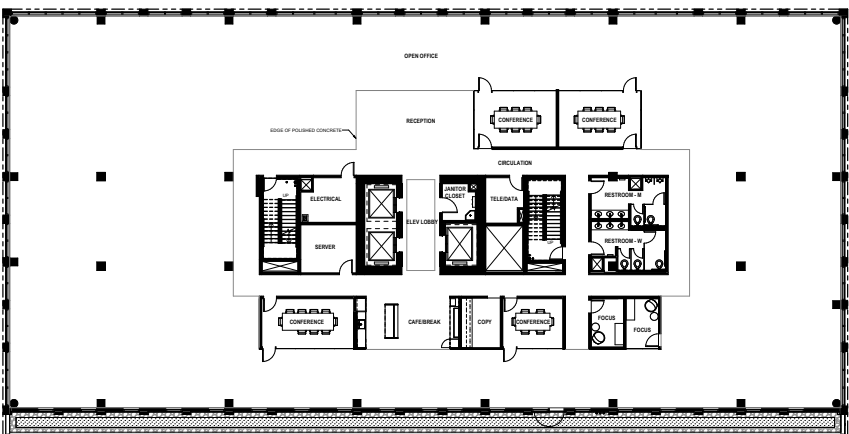


YOUR FRONT ROW SEAT

Canvas is currently home to **Migration Brewing**. Enjoy a beer overlooking the West Hills and Providence Park, home of the Portland Timbers and Thorns.



- 19,000 RSF spec floor with creative finishes ready for occupancy
- Large windows and four sides of glass providing abundant natural light
- 13'6" ceiling height
- Open layout allowing for flexible configurations



YOUR RIDE IS WAITING

Commuting to the west side or catching a flight out of PDX, step out of Canvas and right onto the MAX train of your choice. Light rail, freeway access, and onsite and neighborhood parking (for cars and bikes) make commuting to Canvas the easiest part of your



97

WALKERS
PARADISE



90

RIDERS
PARADISE



94

BIKERS
PARADISE



24 MINUTES TO
THE AIRPORT



5 MINUTES TO PIONEER
COURTHOUSE SQUARE



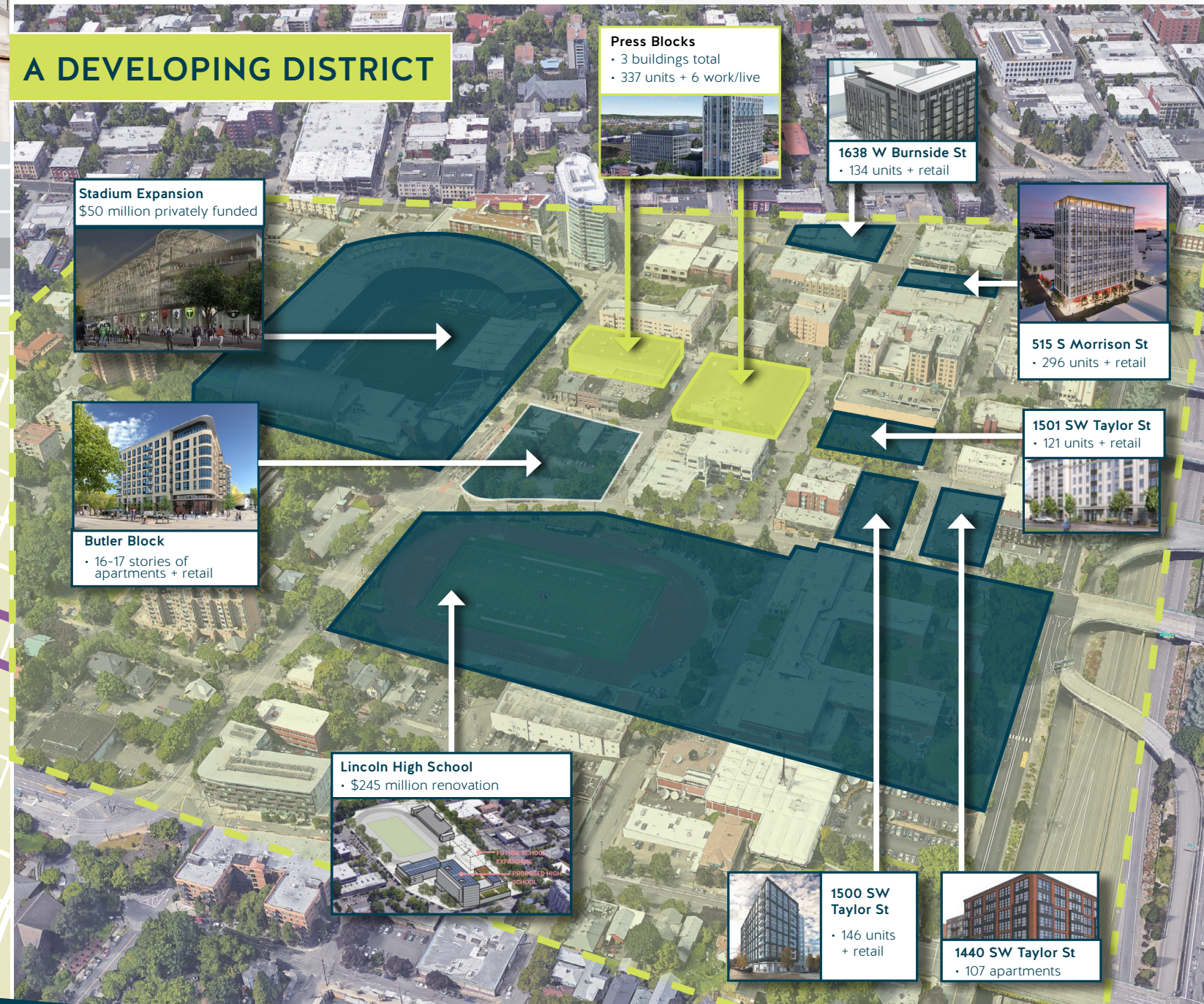
15 MINUTES TO NIKE
WORLD HEADQUARTERS

346

MAX TRAINS STOP OUTSIDE
PRESS BLOCKS EVERY WEEKDAY



A DEVELOPING DISTRICT



CANVAS

At Press Blocks

GET READY TO
MAKE YOUR MARK



Andrew Rosengarten
Licensed in OR
+1 503 972 8097
andrew.rosengarten@am.jll.com

Jake Lancaster
Licensed in OR
+1 503 972 8612
jake.lancaster@am.jll.com

Jones Lang LaSalle Brokerage, Inc. | 1120 NW Couch St., Suite 500 | Portland, OR 97209

©2020 Jones Lang LaSalle IP, Inc. All rights reserved. All information contained herein is from sources deemed reliable; however, no representation or warranty is made to the accuracy thereof.