

# Spring Mill

OF  
CONSHOHOCKEN



## THE BOILER HOUSE AT SPRING MILL

1010 Spring Mill Avenue, Conshohocken, PA

Follow your  
inspiration

Patrick Brady  
Executive Vice President  
+1 215 771 0108  
patrick.brady@am.jll.com

T. Ryan FitzPatrick  
Vice President  
+1 610 639 8980  
TRyan.fitzpatrick@am.jll.com

JLL | Jones Lang LaSalle Brokerage, Inc.  
1235 Westlakes Drive, Suite 210  
Berwyn, PA 19312  
+1 610 249 2255

Although information has been obtained from sources deemed reliable, neither Owner nor JLL makes any guarantees, warranties or representations, express or implied, as to the completeness or accuracy as to the information contained herein. Any projections, opinions, assumptions or estimates used are for example only. There may be differences between projected and actual results, and those differences may be material. The Property may be withdrawn without notice. Neither Owner nor JLL accepts any liability for any loss or damage suffered by any party resulting from reliance on this information. If the recipient of this information has signed a confidentiality agreement regarding this matter, this information is subject to the terms of that agreement. ©2021. Jones Lang LaSalle IP, Inc. All rights reserved.



# Creative Office Space to Inspire



Three stories of unique industrial-style office space sit in the repurposed Spring Mill Boiler House, the ideal environment for the creative tenant.

Creative first floor space consisting of 7,543 SF

Ample natural light with exposed ceilings

Access to high-end fitness center in Building A

Access to new lounge area with full-service cafe and conference facilities with state-of-the-art media capabilities in Building B

New mixed-use development with retail and multifamily

New upgraded lobbies and corridors



## 1<sup>ST</sup> FLOOR



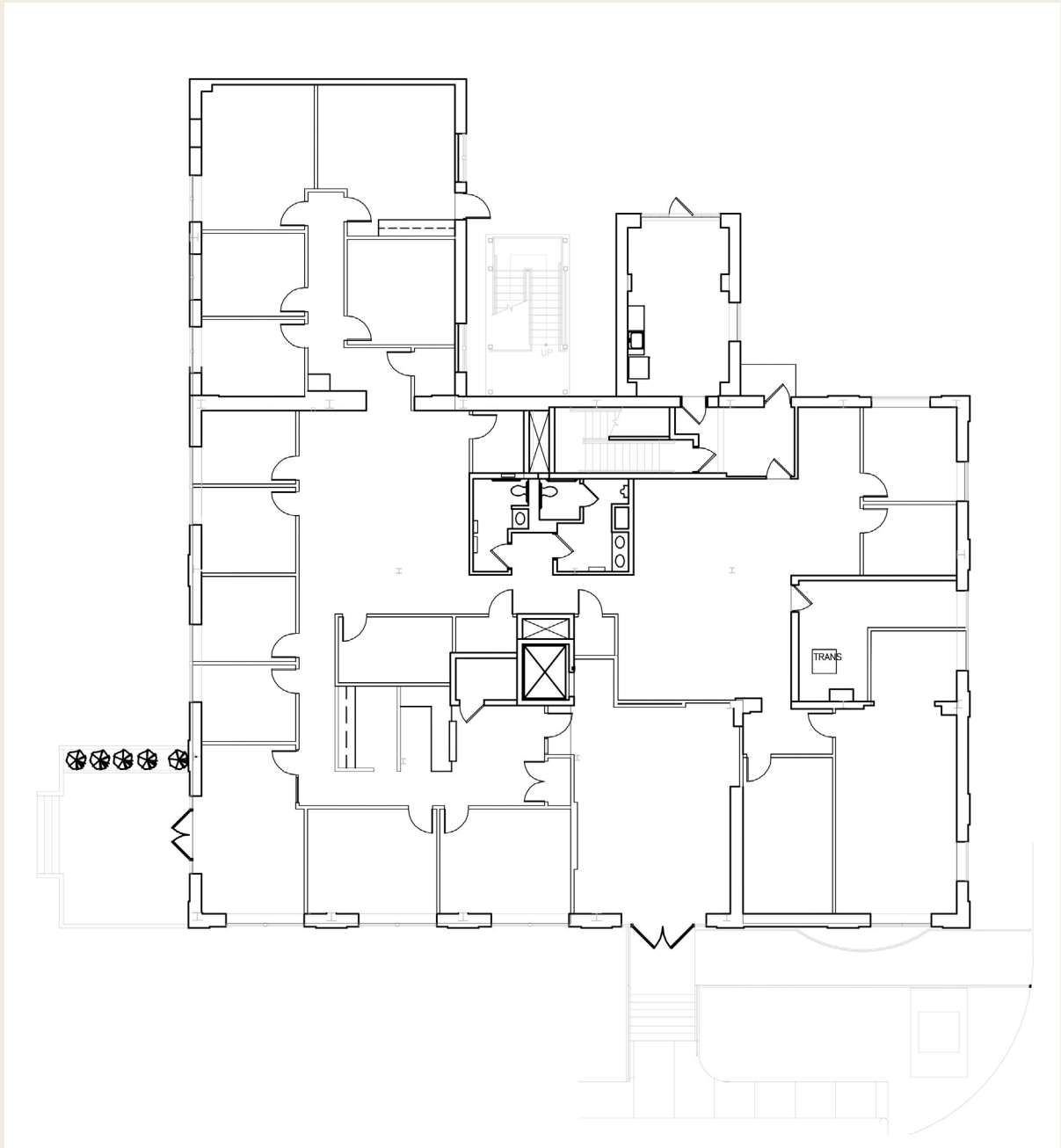
### HISTORIC INTERIORS FUSED WITH MODERN UPGRADES

- Exposed ductwork
- Brick façade
- Wood beams
- 14' ceilings
- Dedicated elevator with direct suite access
- Upgraded lobby
- Social hubs
- Ample natural daylight





1<sup>ST</sup> FLOOR



Patrick Brady  
Executive Vice President  
+1 215 771 0108  
patrick.brady@am.jll.com

T. Ryan FitzPatrick  
Vice President  
+1 610 639 8980  
TRyan.fitzpatrick@am.jll.com

JLL | Jones Lang LaSalle Brokerage, Inc.  
1235 Westlakes Drive, Suite 210  
Berwyn, PA 19312  
+1 610 249 2255

Although information has been obtained from sources deemed reliable, neither Owner nor JLL makes any guarantees, warranties or representations, express or implied, as to the completeness or accuracy as to the information contained herein. Any projections, opinions, assumptions or estimates used are for example only. There may be differences between projected and actual results, and those differences may be material. The Property may be withdrawn without notice. Neither Owner nor JLL accepts any liability for any loss or damage suffered by any party resulting from reliance on this information. If the recipient of this information has signed a confidentiality agreement regarding this matter, this information is subject to the terms of that agreement. ©2021. Jones Lang LaSalle IP, Inc. All rights reserved.