



THE RINALDI

SUITE 225 | 3,720 RSF

LOCATED IN THE PIAZZA AT PACES
3282 NORTHSIDE PARKWAY NW, ATLANTA GA 30327



HEIGHTENED
SECURITY



WALKABLE
CONVENIENCES
OUTSIDE YOUR DOOR



BEAUTIFUL
COURTYARD AMENITY



UNMATCHED
ACCESS
TO WEST PACES
FERRY RD & I-75



PLENTIFUL
COVERED
PARKING



EXCLUSIVE OPPORTUNITY

Experience ultimate accessibility through a vast network of professional businesses, walkability to iconic Atlanta restaurants, and proximity to West Buckhead residences at The Rinaldi. Located within the distinctive, European inspired Piazza at Paces development, The Rinaldi boasts privacy and convenience in a beautiful environment. Take advantage of an exclusive leasing opportunity that is ideal for a small business looking for personal and professional balance.



BUILDING FEATURES

- 42,704 RSF boutique office
- 3 stories

PRIVACY AND SECURITY

Conveniently located off the I-75/ Northside Parkway interchange near West Paces Ferry Road, The Rinaldi is a short drive from the surrounding residential neighborhoods. A guarded and gated parking garage entrance offers the utmost privacy and security, which is further enhanced by direct elevator access to your office floor.

SUPERIOR LOCATION

The Rinaldi building is easily accessible from I-75 and West Paces Ferry Road, and it is conveniently located near some of Atlanta's most iconic restaurants.







3,720 RSF
AVAILABILITY



PRIVATE
ROOMS ON GLASS



UPGRADED
HARDWOOD FLOORS
IN RECEPTION



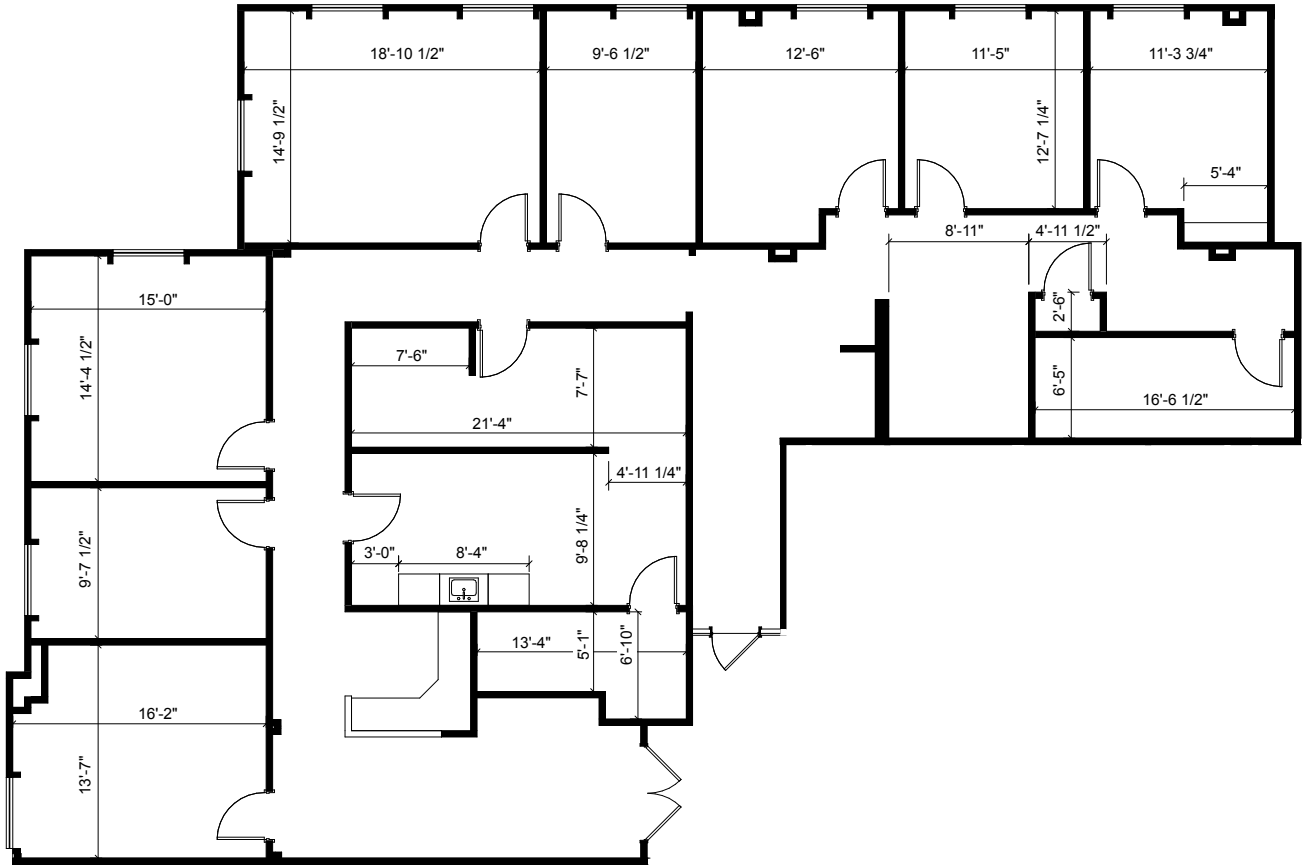
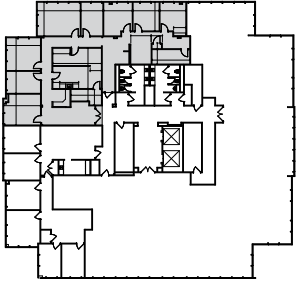
CONTROLLED
ACCESS



TENANT IMPROVEMENT
ALLOWANCE
AVAILABLE



KEY PLAN



THE RINALDI
3282 NORTHSIDE PARKWAY NW
ATLANTA, GA 30327

For leasing information, please contact:

Mary Ellen Blackmar
+1 404 995 6378
maryellen.blackmar@am.jll.com

