



# Available

## Up to 600,000 SF available

1201 Paper Mill Road | Mobile, AL

### Property Specifications

Building 1 Size	270,000 SF	Exterior Doors	31
Building 2 Size	330,000 SF	Drive In Doors	3
Sprinklers	Wet	Loading Docks	13

### Property Features

- 3,000 SF maintenance shop
- Rail access
- Buildings fully sprinkled
- Close proximity to Alabama State Port
- Easy access to I-165 and US Hwy 43

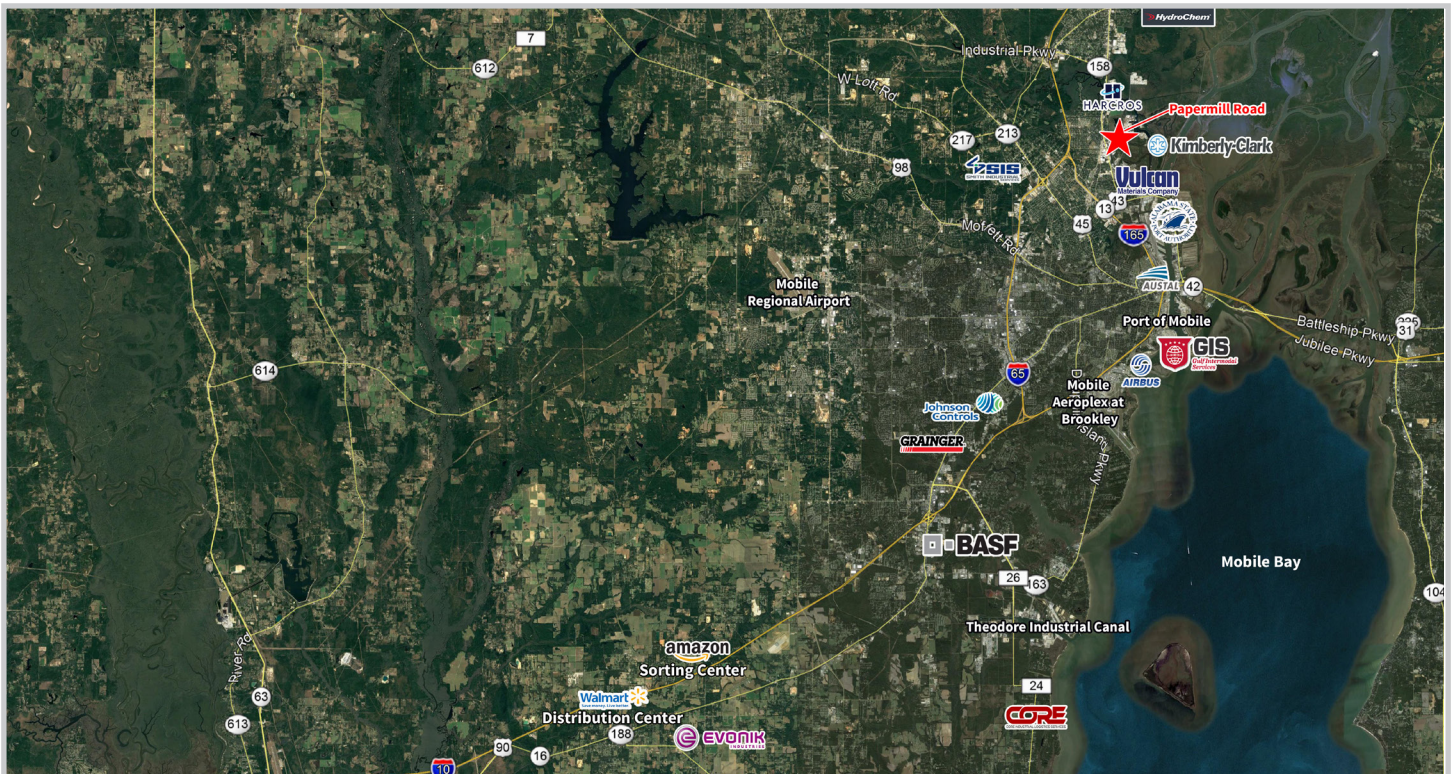
Allen Garstecki  
+1 251 301 7369  
[allen.garstecki@am.jll.com](mailto:allen.garstecki@am.jll.com)

Guy Oswalt  
+1 251 301 7371  
[guy.oswalt@am.jll.com](mailto:guy.oswalt@am.jll.com)



**DISCLAIMER**

© 2021 Jones Lang LaSalle IP, Inc. All rights reserved. All information contained herein is from sources deemed reliable; however, no representation or warranty is made to the accuracy thereof.



Allen Garstecki  
+1 251 301 7369  
allen.garstecki@am.jll.com

Guy Oswalt  
+1 251 301 7371  
guy.oswalt@am.jll.com

