



Philanthropic Center
Louisville, Kentucky



CONTACT

Yandell Wood, SIOR
+1 502 394 2518
yandell.wood@am.jll.com

David Wood, SIOR
+1 502 394 2510
david.wood@am.jll.com

Doug Owen, SIOR
+1 502 394 2516
doug.owen@am.jll.com



DISCLAIMER
© 2020 Jones Lang LaSalle IP, Inc. All rights reserved. All information contained herein is from sources deemed reliable; however, no representation or warranty is made to the accuracy thereof.



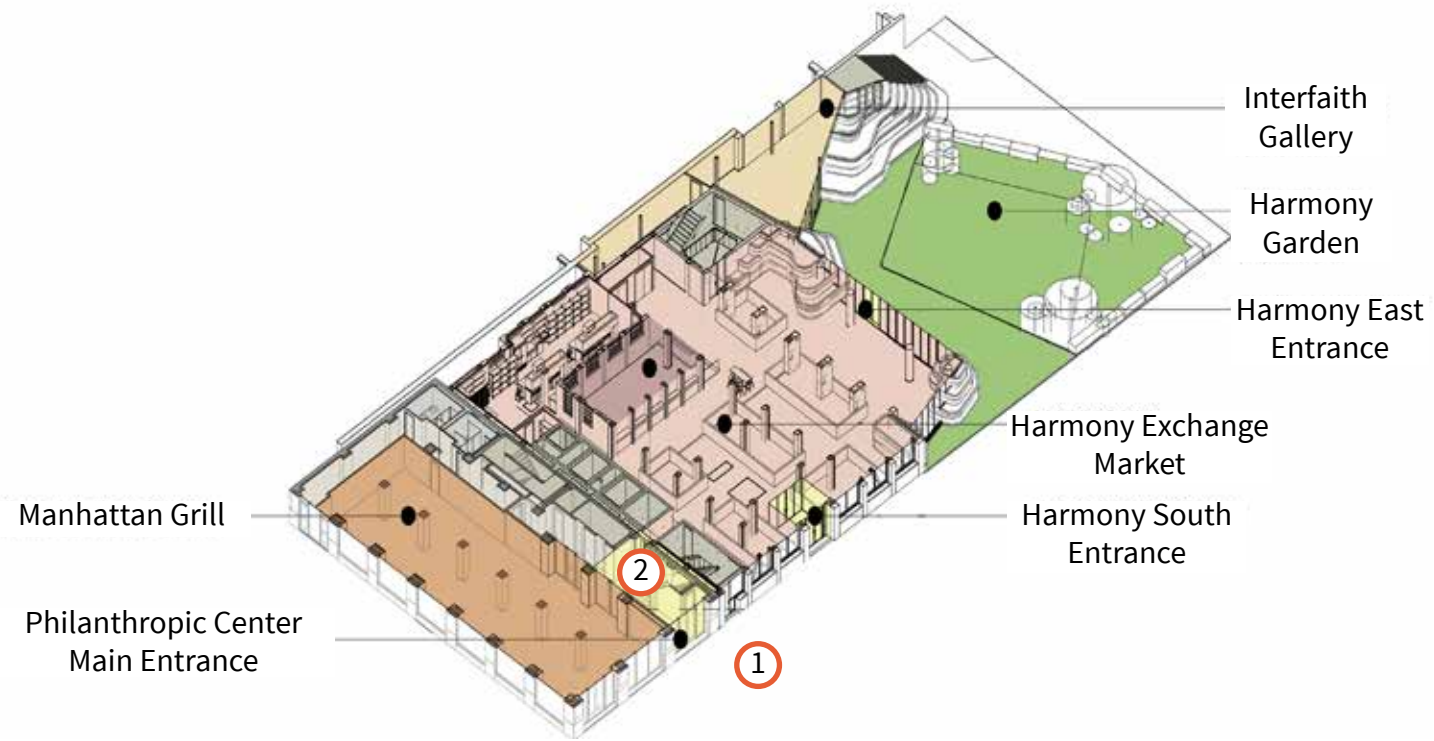
HISTORY AND VISION FOR THE FUTURE:

429 W Muhammad Ali is being re-imagined as an inspiring and energizing center of operations for mission-driven people in The Heart of our City. With key philanthropic foundations as core partners, it will bring together support conditions for maximum social innovation and impact. Programming will actively nurture more experimentation and better solutions through random collisions among people of divergent talent and expertise. Under the common banner of community health, individuals and organizations will convene to explain and explore, finding broader perspective and new ideas via the best resource of all: each other.

With eleven floors of configurable space, 429 W Muhammad Ali pairs with the adjacent Harmony Building and Center for Interfaith Relations, positioned in the heart of downtown Louisville. Ultimately, the campus of multiple headquarters will connect to national foundations and research universities, serving as a conduit for insight into new metropolitan solutions; in a place of pride, beauty, innovation and great history, inspiring philanthropy - and the reality that we are all in fact philanthropists! As leaders of a citywide urban proving ground, Louisville leaders will have the chance to make an impact felt across the street and across the nation by continually re-enforcing our individuality and all of our interconnections.

COMMUNITY SPACES

FIRST FLOOR



Philanthropic Center Muhammad Ali Entrance



Connection to Harmony Building

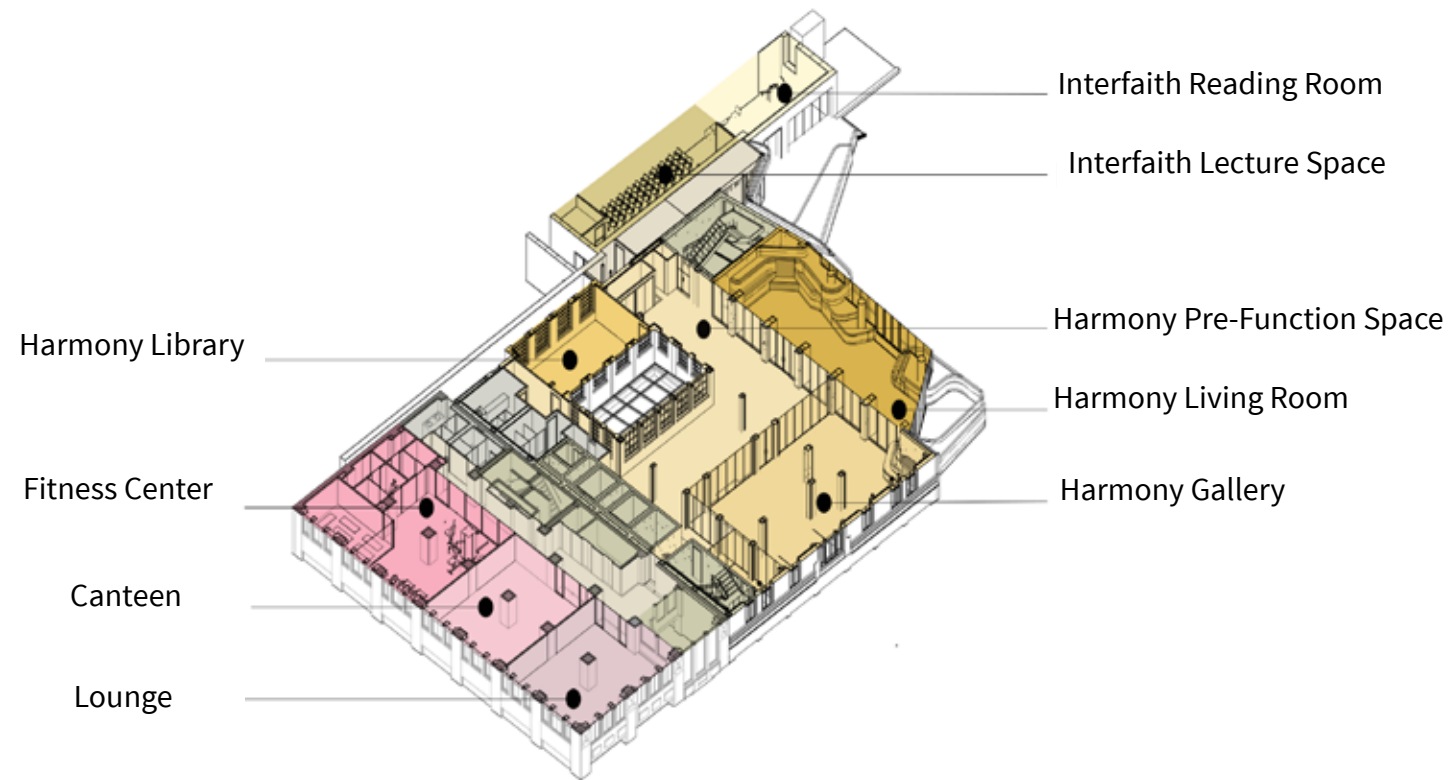


Lobby Entrance



COMMUNITY SPACES

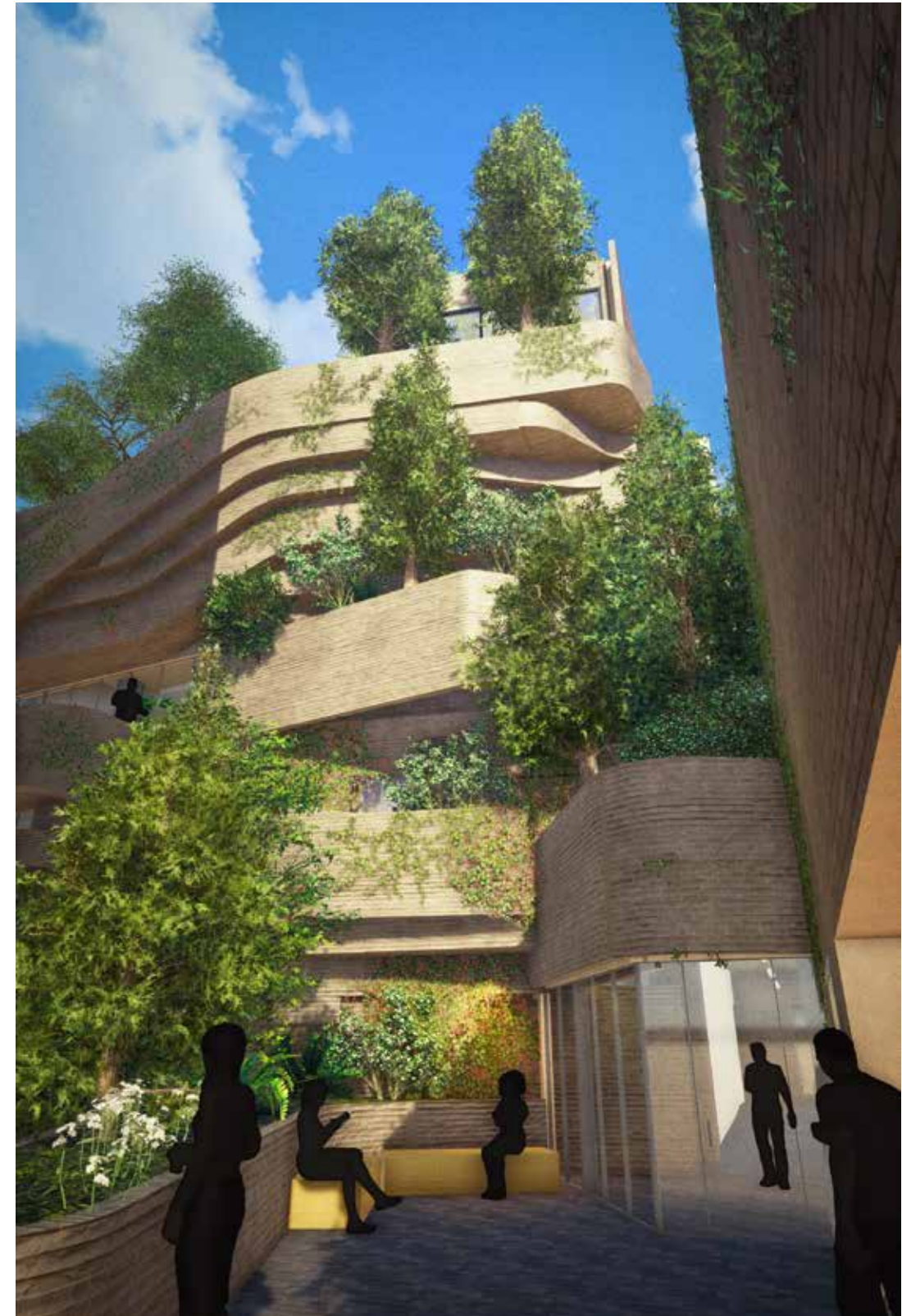
SECOND FLOOR



CIR

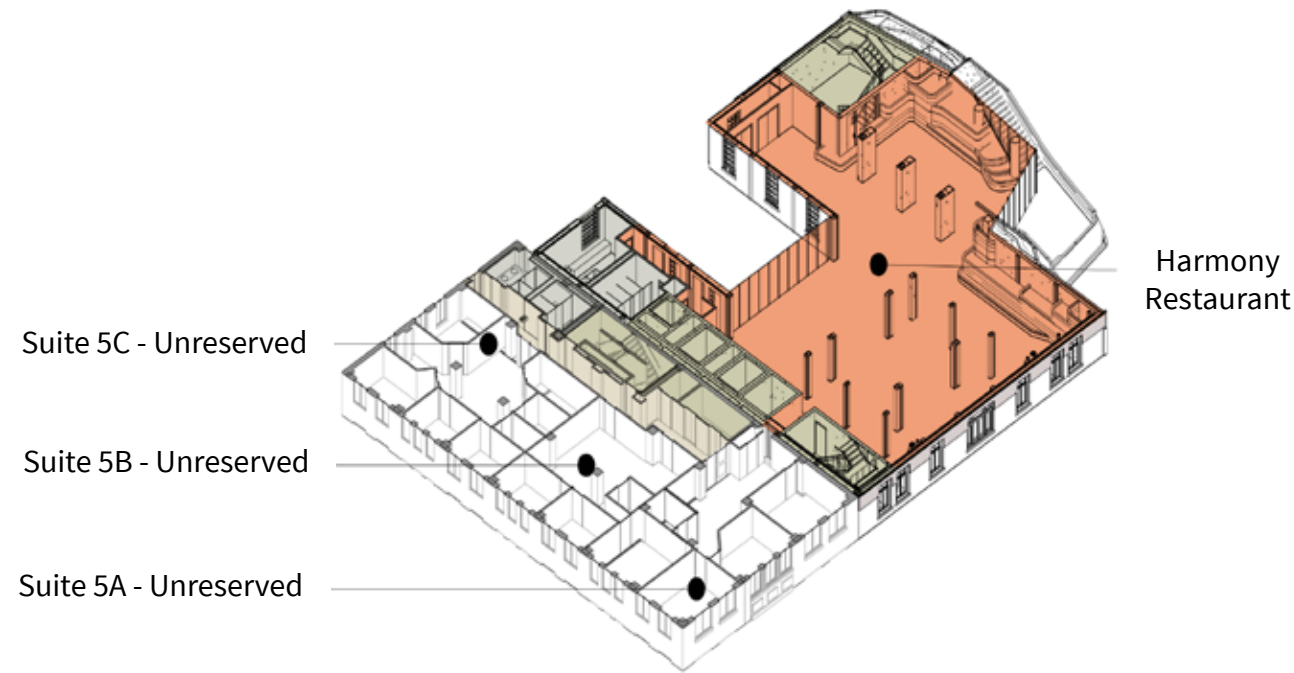


CIR terrace entrance

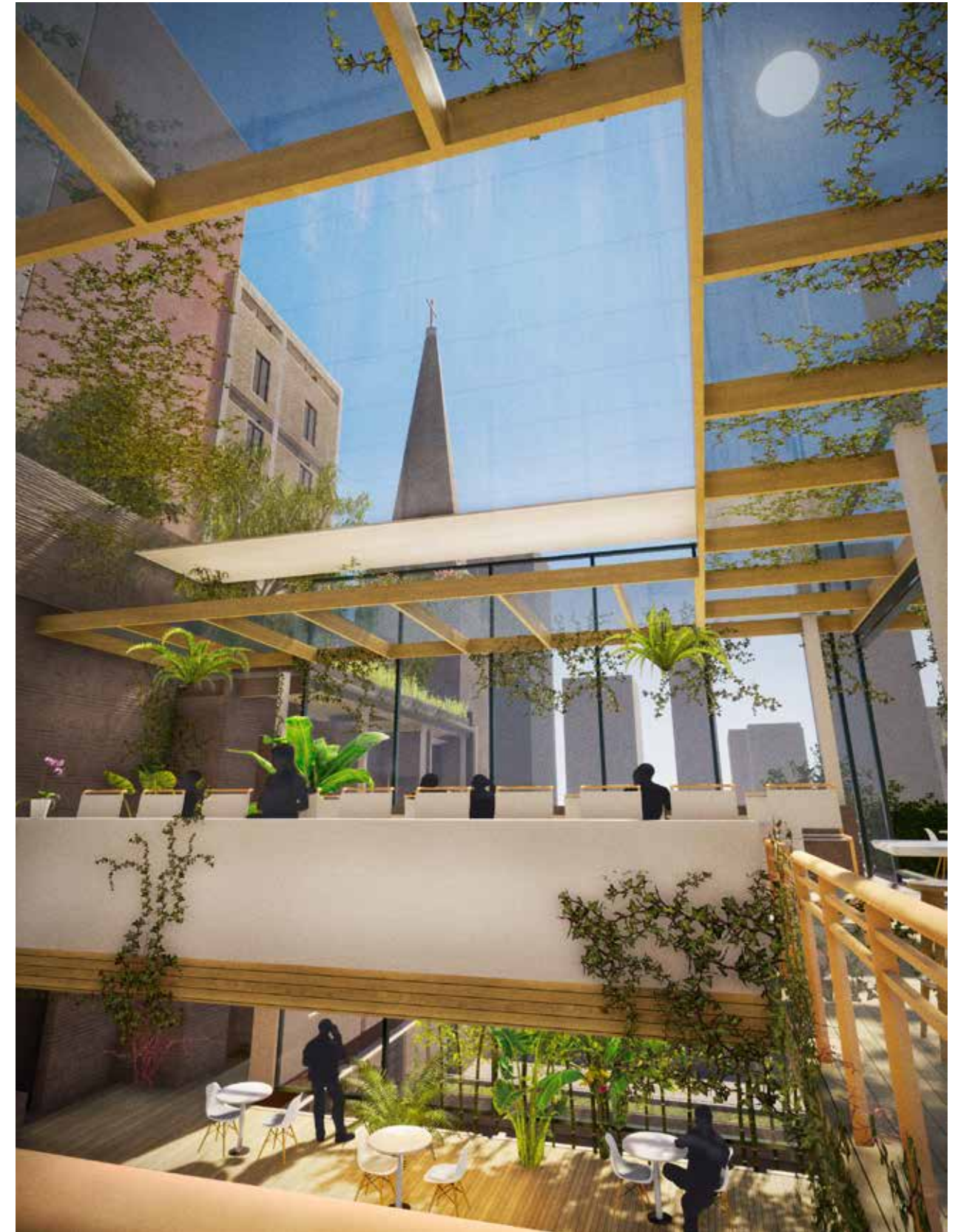
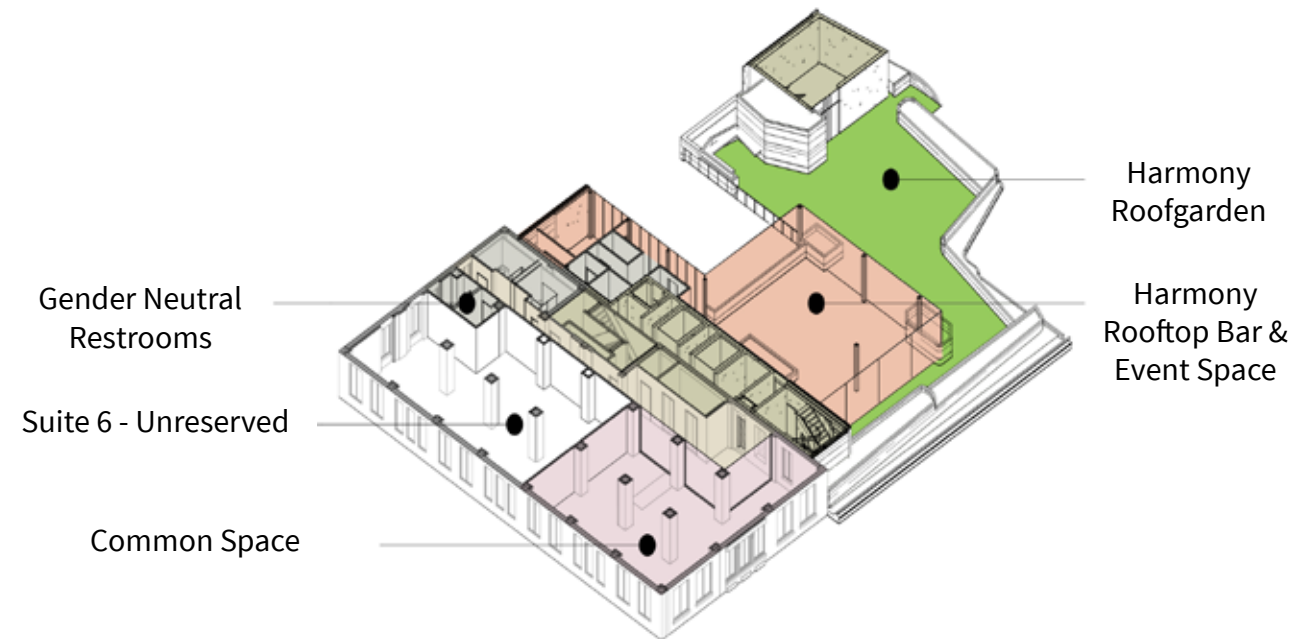


COMMUNITY SPACES

FIFTH FLOOR: Rooftop Terrace / Bar



SIXTH FLOOR: Rooftop Terrace / Bar



COMMUNITY IN THE HEART OF THE CITY

Conveniently located for tenants, clients and guests, the building is in close proximity to nearby amenities including cultural, economic and nutritional offerings.

The building offers immediate accessibility throughout downtown, sitting near Interstates 64, 65 and 71 and within walking distance to multiple parking options.



Walking Distance to Downtown Amenities

*Between 2 and 3-ft. stride for 5'5" person

Cathedral of the Assumption
295 feet | 130 steps

Kentucky International Convention Center
0.3 miles | 695 steps

YMCA
0.4 miles | 930 steps

Kentucky Center for the Arts
0.5 miles | 1160 steps

Louisville Free Public Library
0.5 miles | 1160 steps

Well at Humana
0.5 miles | 1160 steps

Frazier History Museum
0.7 miles | 1625 steps

Harvest
1.2 miles | 2785 steps

Waterfront Park
1.4 miles | 3250 steps

The Table
1.8 miles | 4175 steps


Big Four Bridge
1.9 miles | 4410 steps

 Amenities

 Parking Garages

 Parking Lots

 Main / Market LouLift Route

 Fourth Street LouLift Route