



For Lease

Property Highlights

- 4,748 SF available immediately
- Located in the heart of downtown Ann Arbor
- Excellent space for office or retail
- Close proximity to freeways and U of M campus

Asking rent: \$24.00 MG

**101 S. Main Street
Ann Arbor, MI**

Neal Warling

+1 734 769 3201

neal.warling@am.jll.com

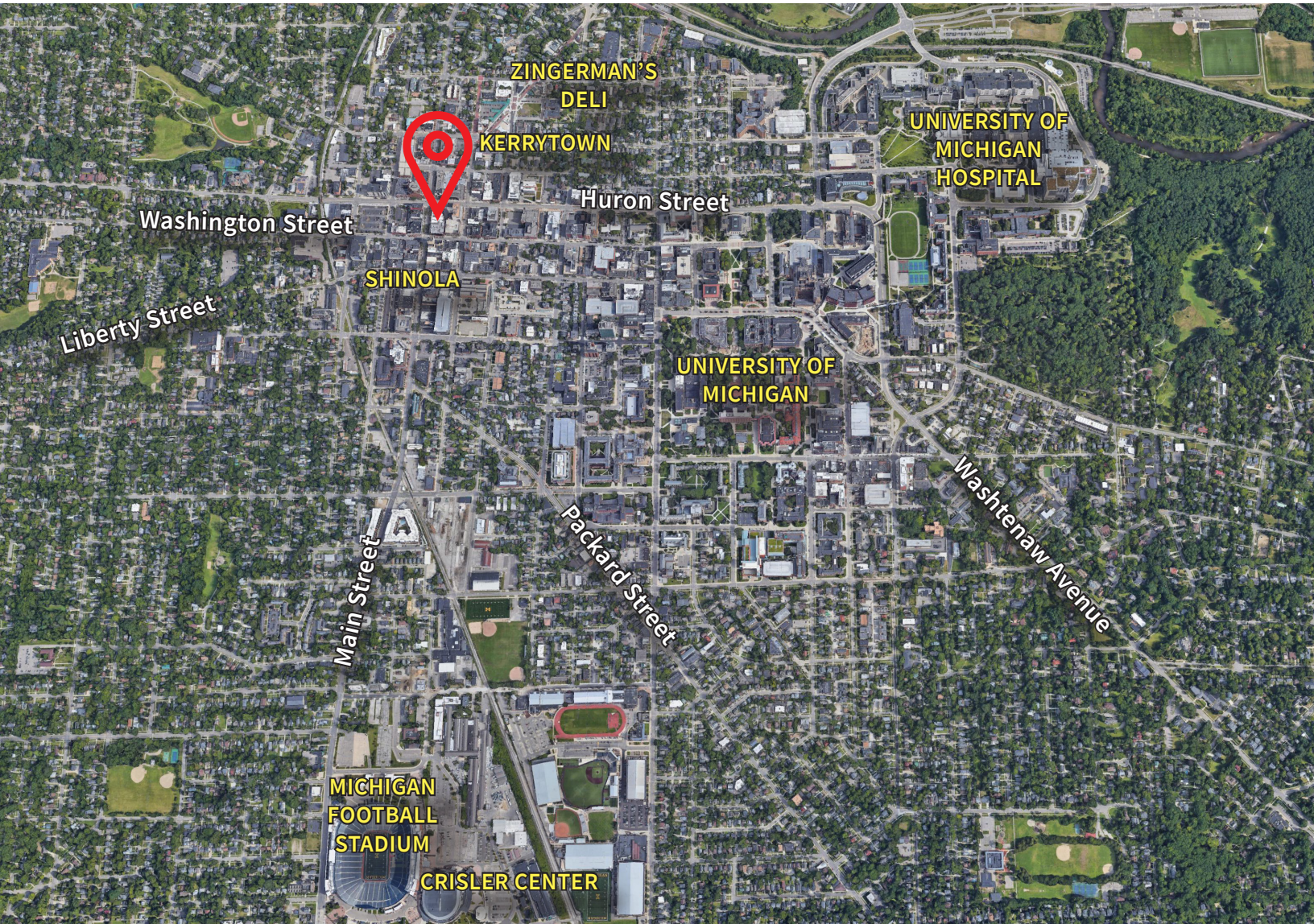
Kelly Fisher

+1 734 769 3203

kelly.fisher@am.jll.com

jll.com/annarbor

AREA MAP



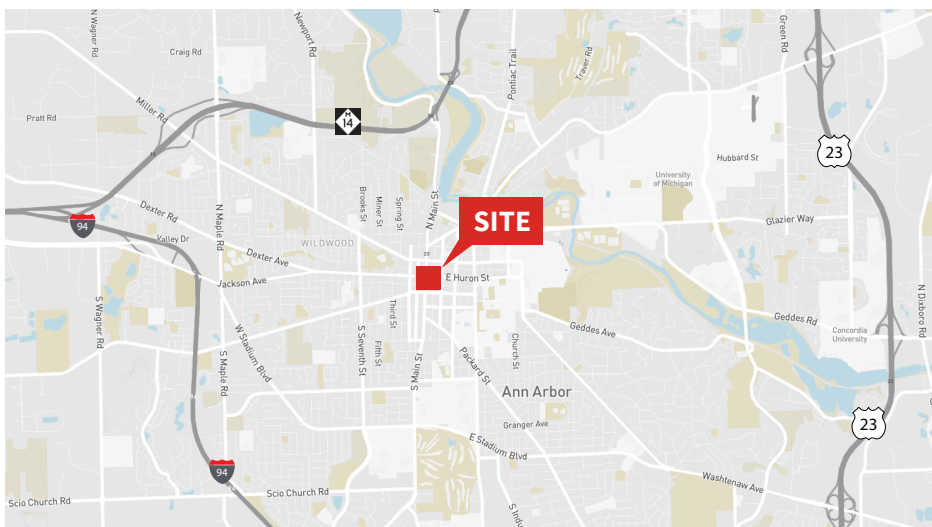
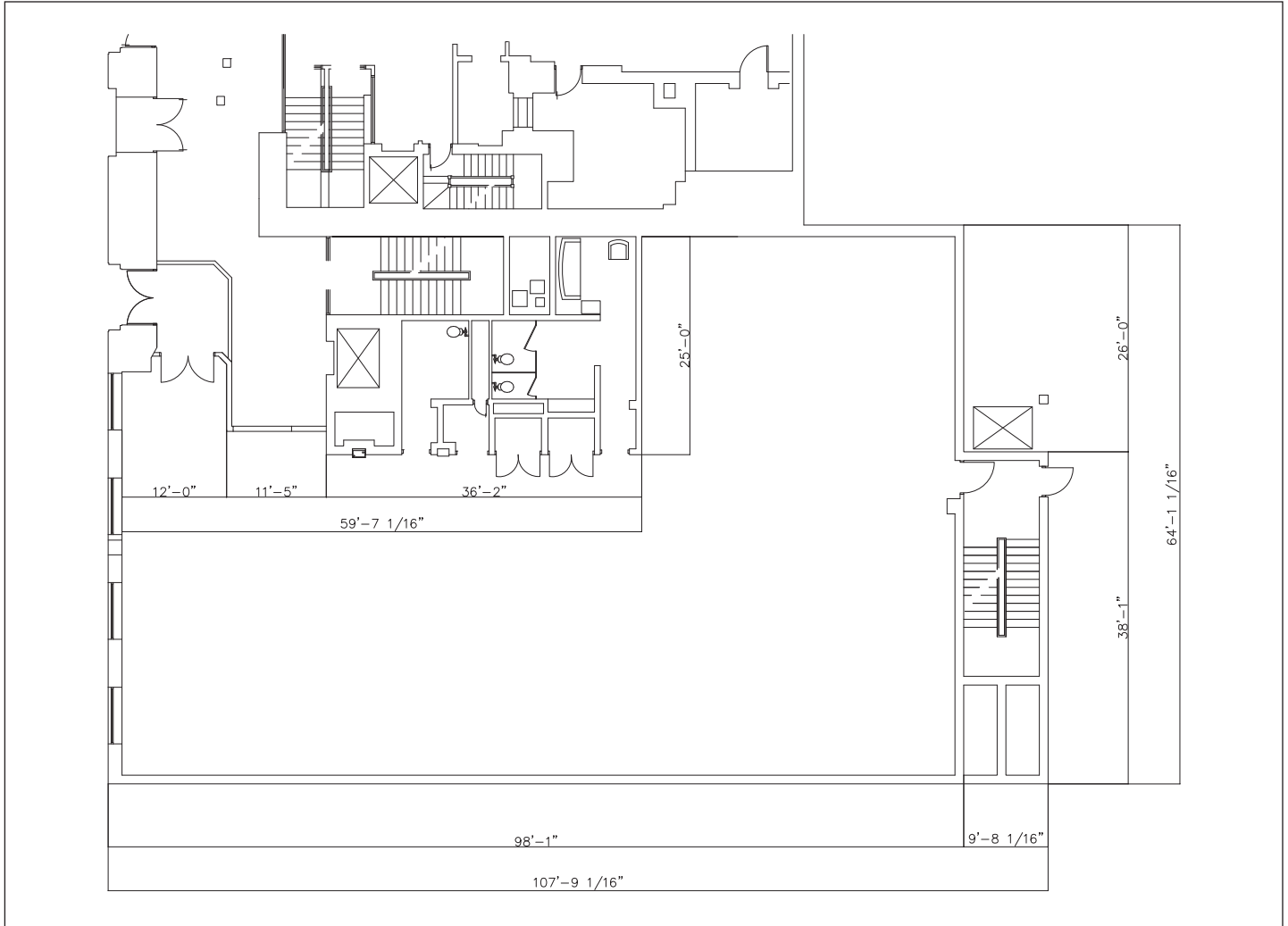
**101 S. Main Street
Ann Arbor, MI**

Neal Warling
+1 734 769 3201
neal.warling@am.jll.com

Kelly Fisher
+1 734 769 3203
kelly.fisher@am.jll.com

jll.com/annarbor

FLOOR PLAN



101 S. Main Street Ann Arbor, MI

Neal Warling
+1 734 769 3201
neal.warling@am.jll.com

Kelly Fisher
+1 734 769 3203
kelly.fisher@am.jll.com

jll.com/annarbor