

**6639 South Kingshighway Boulevard**  
St. Louis, MO 63116

All Offers  
Are Due Now  
Through  
5/3/2022



# For Sale

## FORMER BANK BRANCH

Single story with six drive-thru lanes at the intersection of Gravois Ave & S Kingshighway Blvd

Building size: ±5,870 SF

Lot size: ±1.35 acres / 59,001 SF

Parking ratio: Approx. 9/1,000 SF  
(53 total spaces includes 2 handicap)

Zoning: Zone "F" Neighborhood Commercial

Parcel IDs: 5565-00-0147, 5565-00-0125

Taxes: \$25,962.37 (2021, Parcel 5565-00-0147)  
\$5,995.88 (2021, Parcel 5565-00-0125)

Location: Close proximity to Carondelet Park in South St. Louis City, approximately 2 miles from I-55

Offer due date: **All offers are due now through Tuesday, May 3, 2022**

**6639 S Kingshighway  
Boulevard  
St. Louis, MO 63116**

**David Biales, CCIM**

Managing Director

david.biales@am.jll.com

+1 314 261 7368

[jll.com/st-louis](http://jll.com/st-louis)

Jones Lang LaSalle Americas, Inc., a licensed real estate broker in 48 states

For details on this property and others available nationwide  
visit: [www.BankingCentersForSale.com](http://www.BankingCentersForSale.com)



# Demos

1 Mile

Estimated Population: 20,622  
Average Household Income: \$73,530

3 Miles

Estimated Population: 159,743  
Average Household Income: \$68,537

5 Miles

Estimated Population: 312,291  
Average Household Income: \$78,249

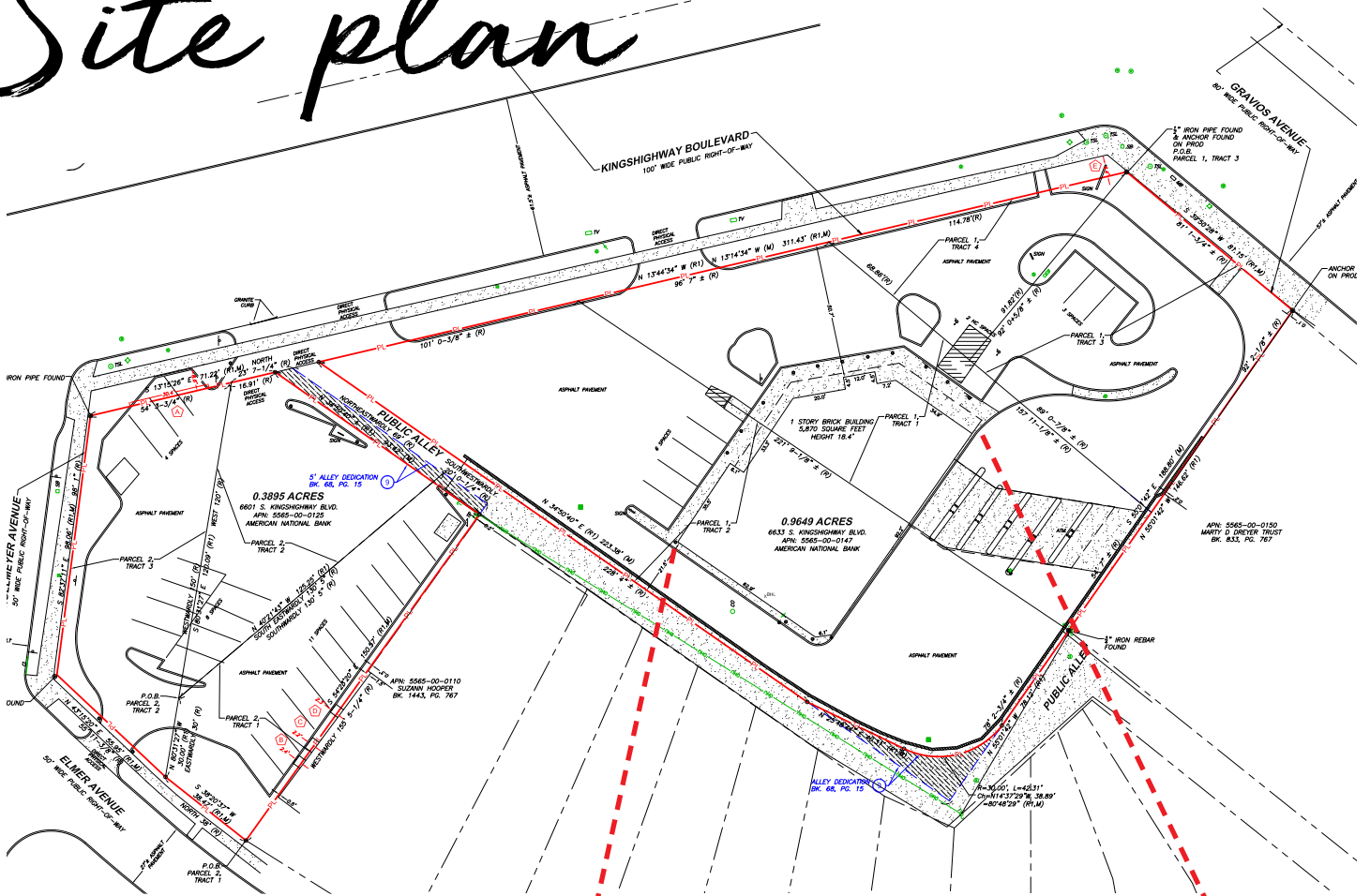


6639 S Kingshighway Blvd | St. Louis, MO 63116



\*All numbers are taken from ESRI

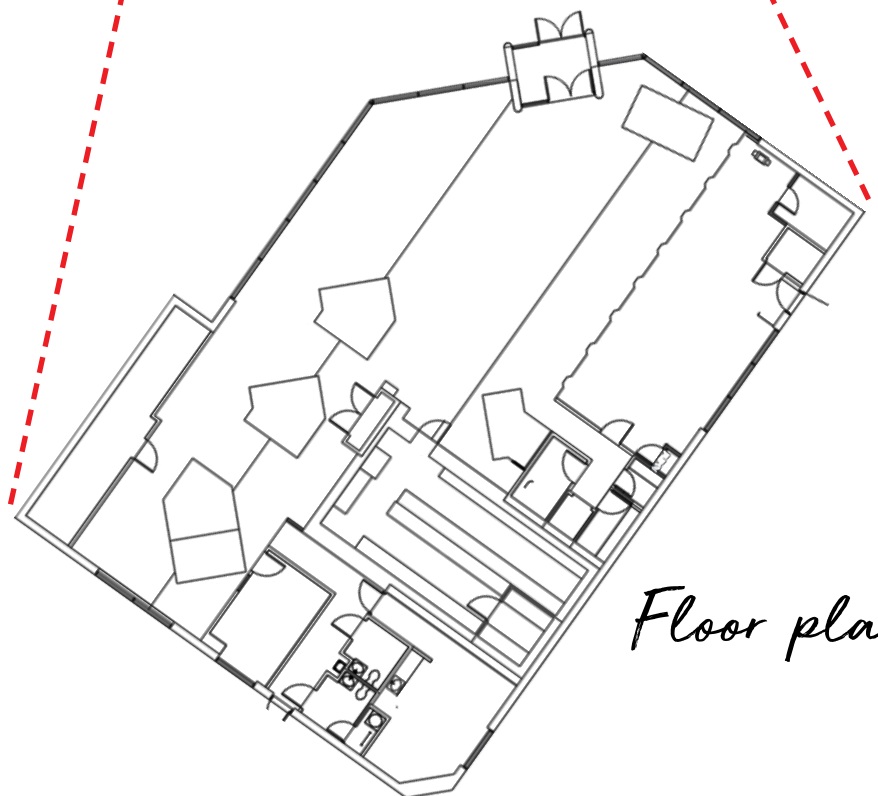
# Site plan



## Contact

David Biales, CCIM  
+1 314 261 7368  
david.biales@am.jll.com

[jll.com/st-louis](http://jll.com/st-louis)  
+1 314 338 2080



## Floor plan



**DISCLAIMER** Although information has been obtained from sources deemed reliable, neither Owner nor JLL makes any guarantees, warranties or representations, express or implied, as to the completeness or accuracy as to the information contained herein. Any projections, opinions, assumptions or estimates used are for example only. There may be differences between projected and actual results, and those differences may be material. The Property may be withdrawn without notice. Neither Owner nor JLL accepts any liability for any loss or damage suffered by any party resulting from reliance on this information. If the recipient of this information has signed a confidentiality agreement regarding this matter, this information is subject to the terms of that agreement. ©2022. Jones Lang LaSalle IP, Inc. All rights reserved.