

1 Mile North
405 Freeway

23rd St.

Orange Ave.

± 3,132 - ± 5,292 SF
Office Space Also
Available

Approx. ± 4,266
SF Metal
Warehouse
Building

± 2.00 Acres
Land Area

Potential 2nd
ingress/egress
possible ±6,420 SF
Lot

Hill St.

1250

East 23rd Street

Signal Hill, CA 90755

±2.00 - ACRE FULFILLMENT CENTER

Louis Tomaselli

Senior Managing Director

949-885-2985

RE license #00904844

louis.Tomaselli@am.jll.com

Mike Fowler

Senior Managing Director

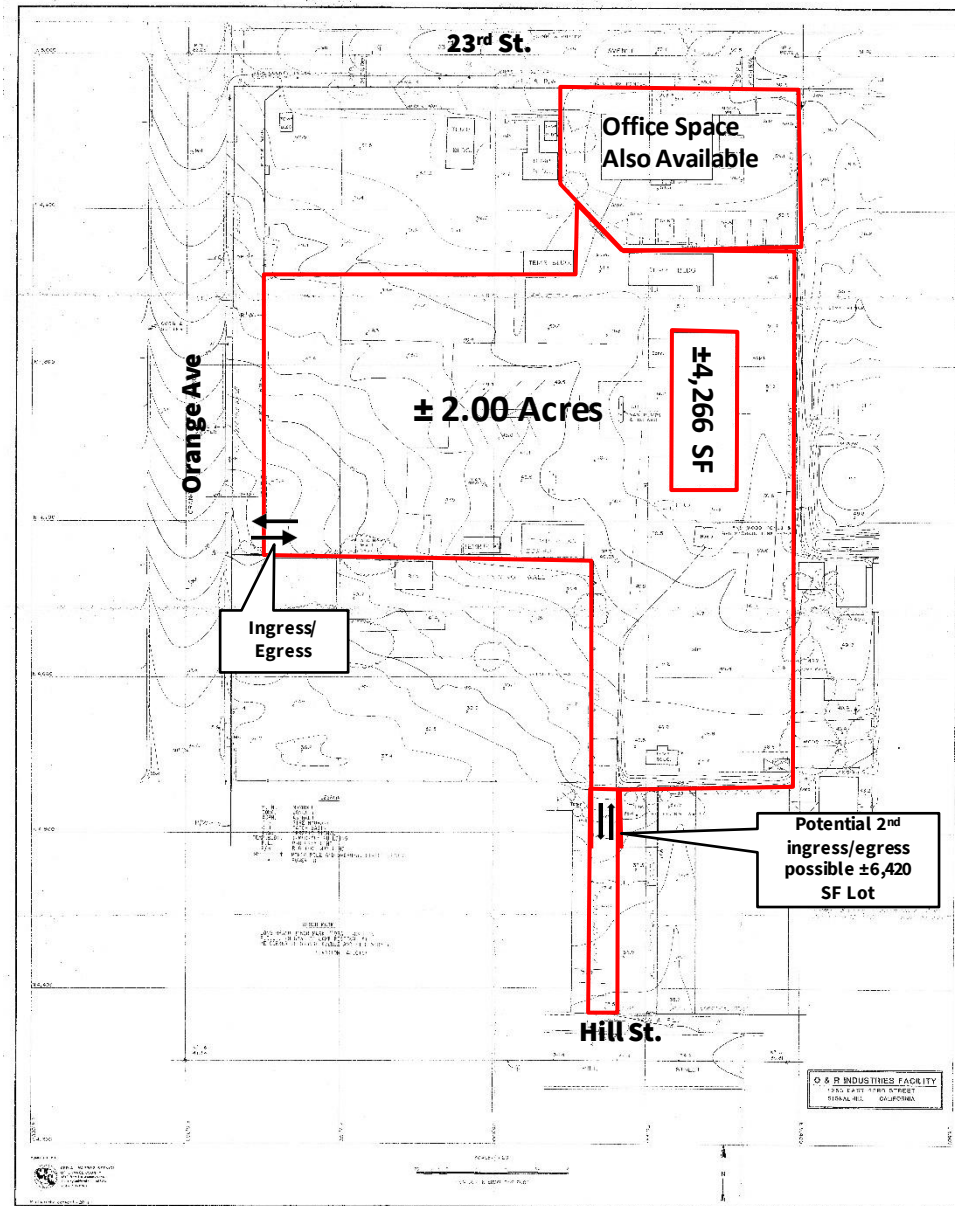
213-239-6235

RE license #01197983

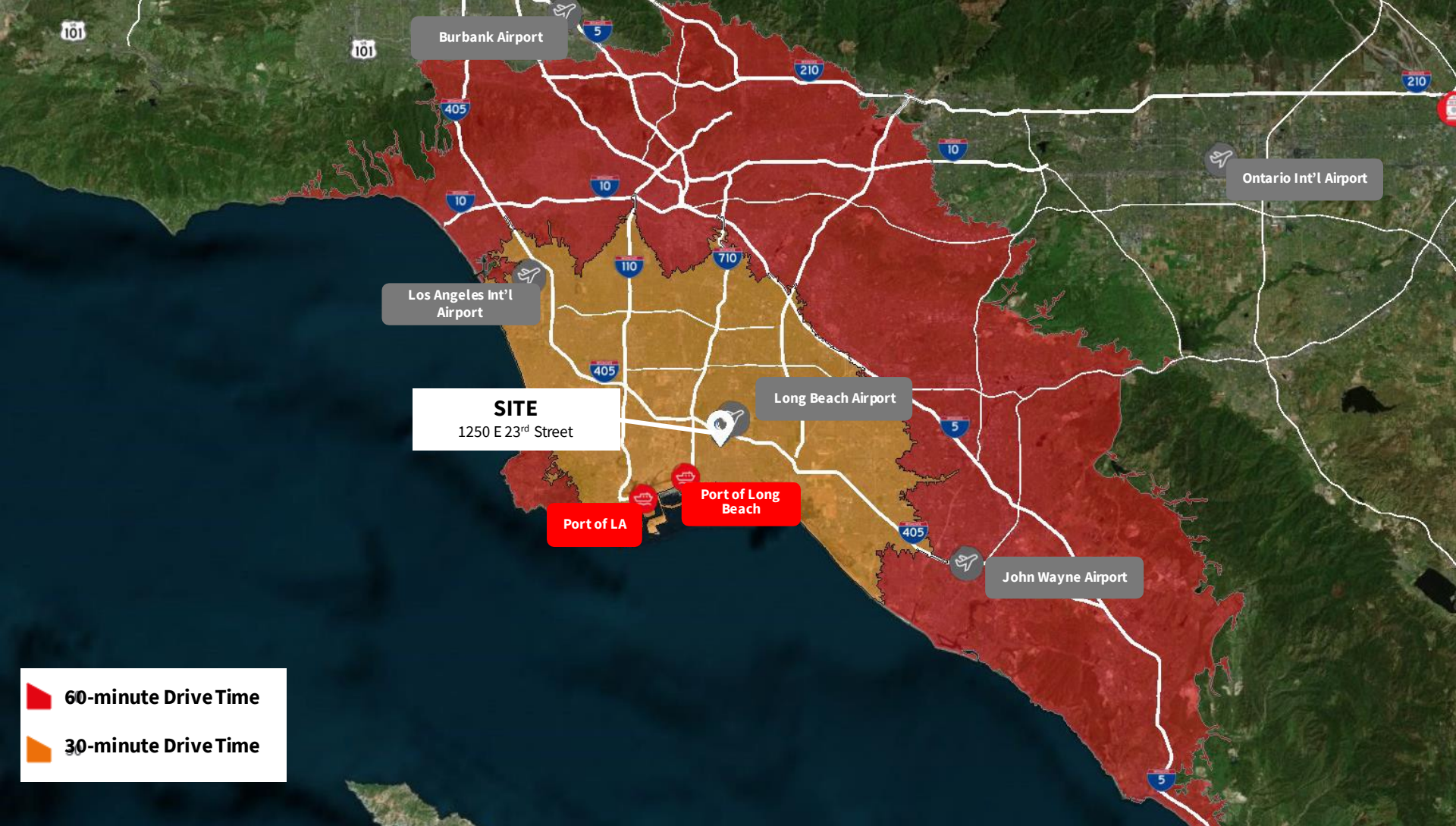
mike.fowler@am.jll.com



Site Plan



Although information has been obtained from sources deemed reliable, JLL does not make any guarantees, warranties or representations, express or implied, as to the completeness or accuracy as to the information contained herein. Any projections, opinions, assumptions or estimates used are for example only. There may be differences between projected and actual results, and those differences may be material. JLL does not accept any liability for any loss or damage suffered by any party resulting from reliance on this information. If the recipient of this information has signed a confidentiality agreement with JLL regarding this matter, this information is subject to the terms of that agreement. ©2021. Jones Lang LaSalle IP, Inc. All rights reserved.



Louis Tomaselli

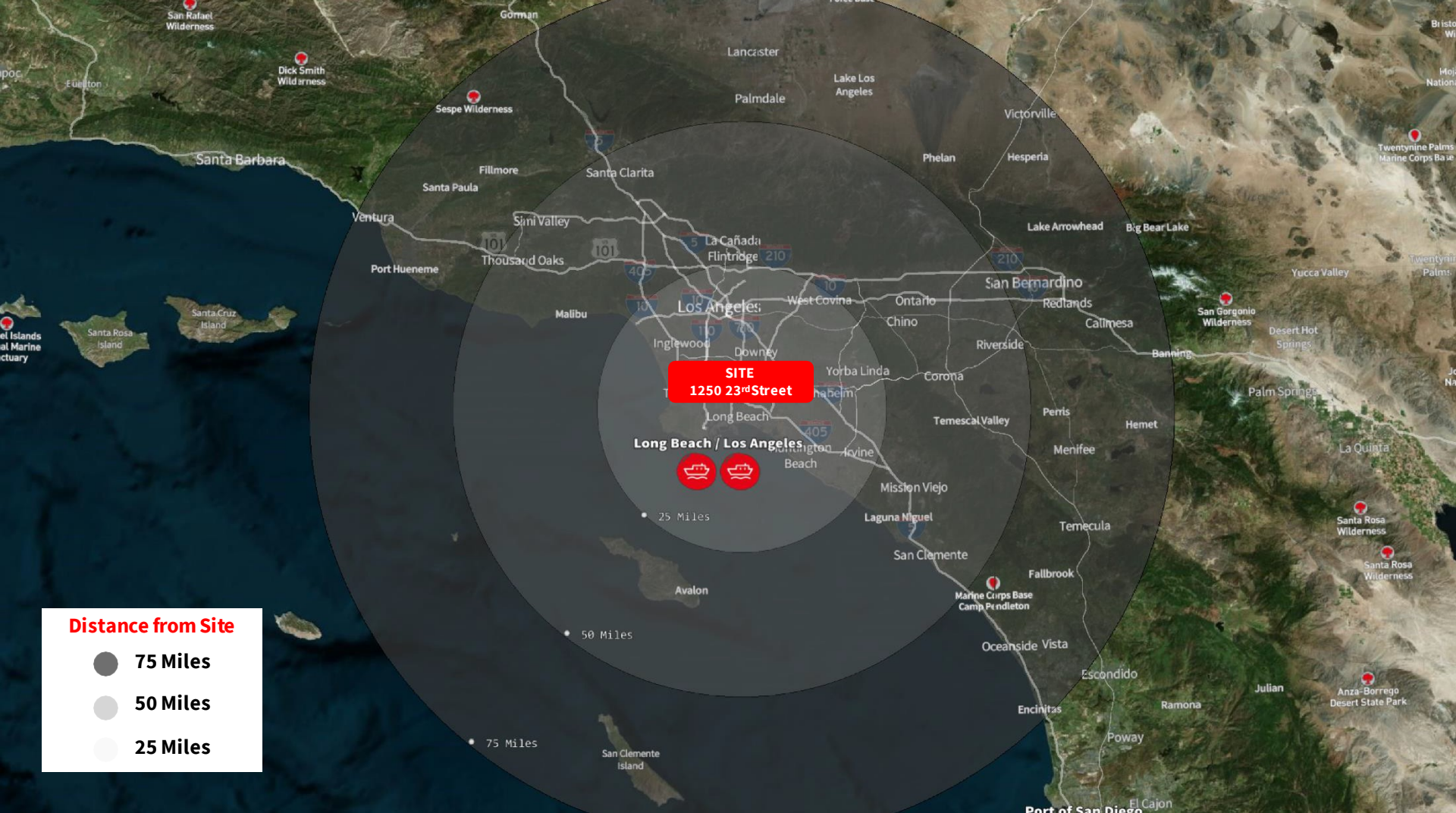
Senior Managing Director
949-885-2985
RE license #00904844
louis.Tomaselli@am.jll.com

Mike Fowler

Senior Managing Director
213-239-6235
RE license #01197983
mike.fowler@am.jll.com



Although information has been obtained from sources deemed reliable, JLL does not make any guarantees, warranties or representations, express or implied, as to the completeness or accuracy as to the information contained herein. Any projections, opinions, assumptions or estimates used are for example only. There may be differences between projected and actual results, and those differences may be material. JLL does not accept any liability for any loss or damage suffered by any party resulting from reliance on this information. If the recipient of this information has signed a confidentiality agreement with JLL regarding this matter, this information is subject to the terms of that agreement. ©2021. Jones Lang LaSalle IP, Inc. All rights reserved.



Distance from Site

- 75 Miles
- 50 Miles
- 25 Miles

Louis Tomaselli

Senior Managing Director
949-885-2985
RE license #00904844
louis.Tomaselli@am.jll.com

Mike Fowler

Senior Managing Director
213-239-6235
RE license #01197983
mike.fowler@am.jll.com



Although information has been obtained from sources deemed reliable, JLL does not make any guarantees, warranties or representations, express or implied, as to the completeness or accuracy as to the information contained herein. Any projections, opinions, assumptions or estimates used are for example only. There may be differences between projected and actual results, and those differences may be material. JLL does not accept any liability for any loss or damage suffered by any party resulting from reliance on this information. If the recipient of this information has signed a confidentiality agreement with JLL regarding this matter, this information is subject to the terms of that agreement. ©2021. Jones Lang LaSalle IP, Inc. All rights reserved.

JLL | 17877 Von Karman Avenue Suite 500 | Irvine, CA 92614



Louis Tomaselli

Senior Managing Director

949-885-2985

RE license #00904844

louis.Tomaselli@am.jll.com

Mike Fowler

Senior Managing Director

213-239-6235

RE license #01197983

mike.fowler@am.jll.com



Although information has been obtained from sources deemed reliable, JLL does not make any guarantees, warranties or representations, express or implied, as to the completeness or accuracy as to the information contained herein. Any projections, opinions, assumptions or estimates used are for example only. There may be differences between projected and actual results, and those differences may be material. JLL does not accept any liability for any loss or damage suffered by any party resulting from reliance on this information. If the recipient of this information has signed a confidentiality agreement with JLL regarding this matter, this information is subject to the terms of that agreement. ©2021. Jones Lang LaSalle IP, Inc. All rights reserved.

JLL | 17877 Von Karman Avenue Suite 500 | Irvine, CA 92614