



# For Lease

## Clifton medical/office space

- 5,072 square feet available and divisible
- Class A building built in 1990 with wrap-around windows
- High quality, custom designed medical/office space
- Beautifully remodeled two-story lobby
- Gurney-sized elevator
- Individually controlled HVAC
- Free on-site parking
- Owner occupied and professionally managed
- Located across from the UC Medical Center, Shriners' Hospital for Children and Cincinnati Children's Hospital and Medical Center
- Immediate access to the new I-71/Martin Luther King interchange

**2925 Vernon Place  
Cincinnati, OH 45219**

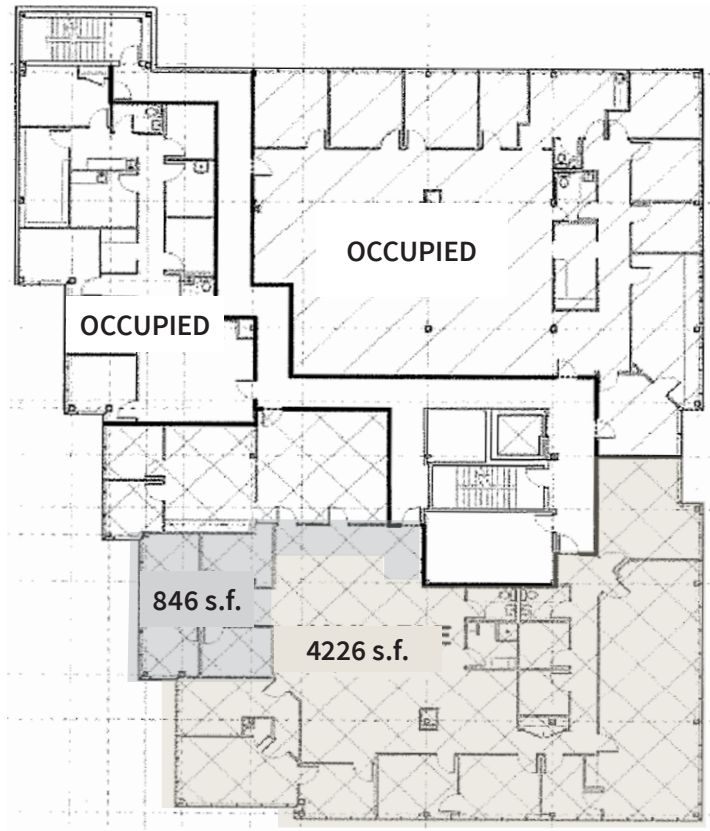
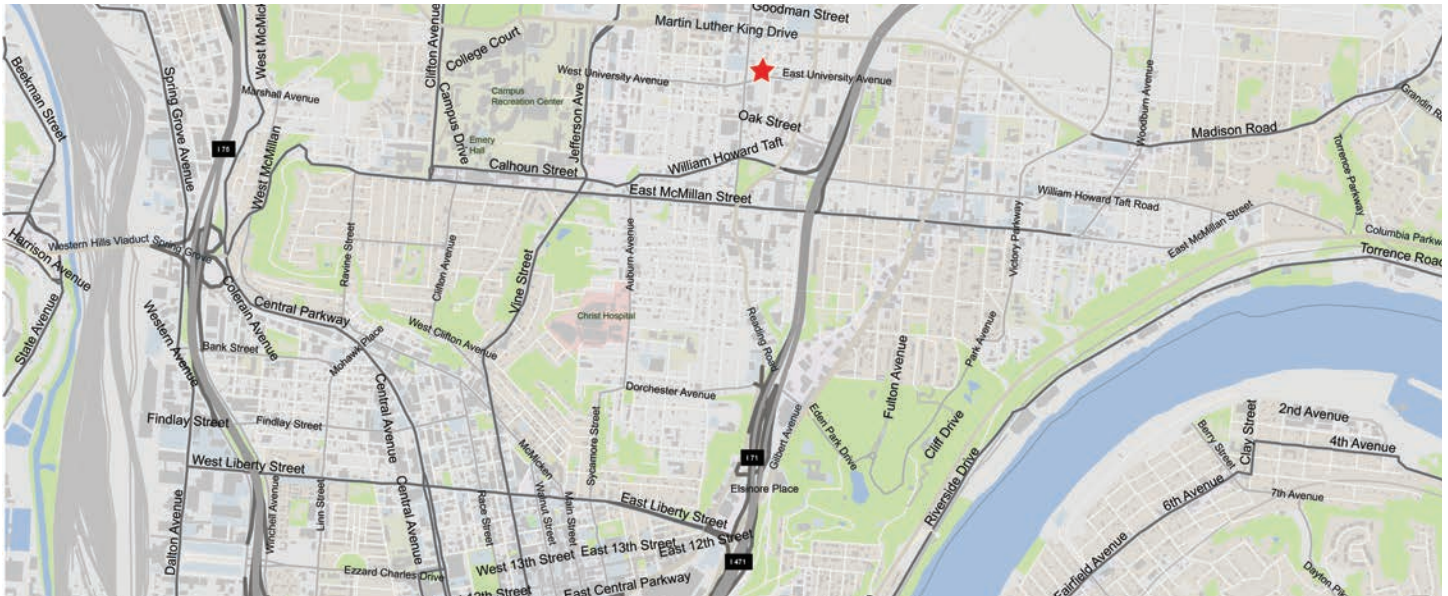
---

**Rusty Myers**  
+1 513 252 2158  
[rusty.myers@am.jll.com](mailto:rusty.myers@am.jll.com)

---

[jll.com/cincinnati](http://jll.com/cincinnati)





**DISCLAIMER**  
 Although information has been obtained from sources deemed reliable, Owner, Jones Lang LaSalle, and/or their representatives, brokers or agents make no guarantees as to the accuracy of the information contained herein, and offer the Property without express or implied warranties of any kind. The Property may be withdrawn without notice. ©2018. Jones Lang LaSalle. All rights reserved.

