



For Lease

Medical office space available

- Class A building constructed in 2018
- 2,076 – 6,631 SF available
- Monument signage available
- Conveniently located at Johnston Willis Drive and Midlothian Turnpike, on the Johnston-Willis campus
- Excellent visibility along Midlothian Turnpike
- 52,000 VPD

**1011 Johnston Willis Dr
North Chesterfield, VA**

Jimmy Appich
+1 804 200 6420
jimmy.appich@jll.com

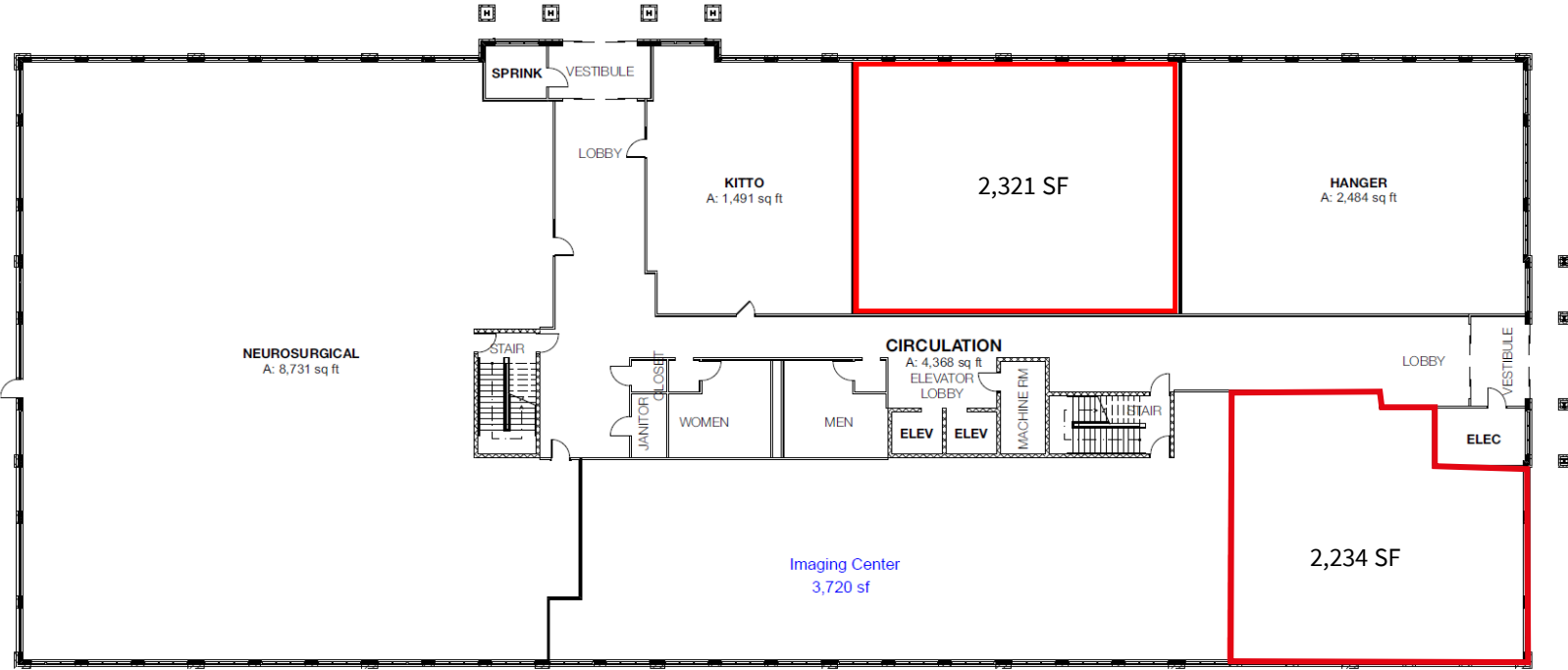
Spotty Robins
+1 804 200 6533
spotty.robins@jll.com

jll.com

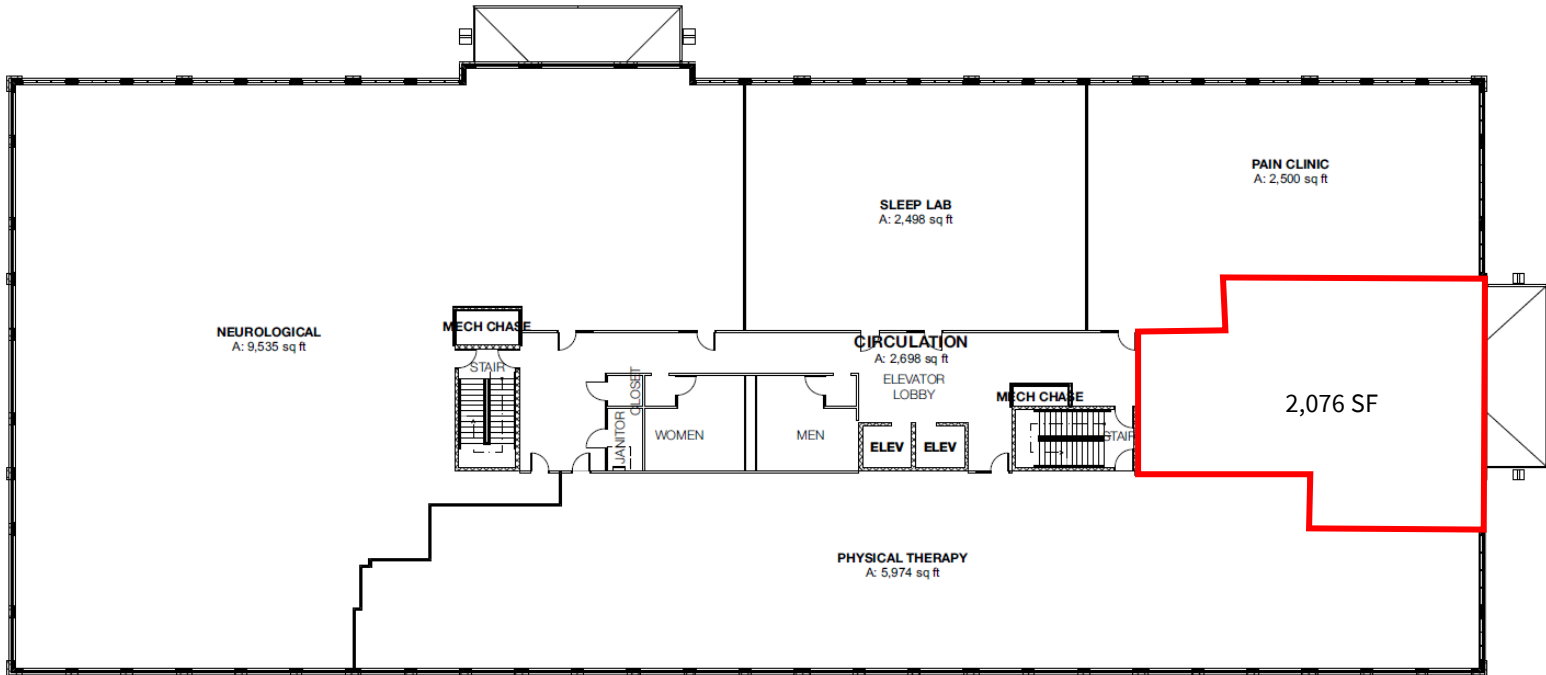
Although information has been obtained from sources deemed reliable, neither Owner nor JLL makes any guarantees, warranties or representations, express or implied, as to the completeness or accuracy as to the information contained herein. Any projections, opinions, assumptions or estimates used are for example only. There may be differences between projected and actual results, and those differences may be material. The Property may be withdrawn without notice. Neither Owner nor JLL accepts any liability for any loss or damage suffered by any party resulting from reliance on this information. If the recipient of this information has signed a confidentiality agreement regarding this matter, this information is subject to the terms of that agreement. ©2023 Jones Lang LaSalle IP, Inc. All rights reserved.



First floor



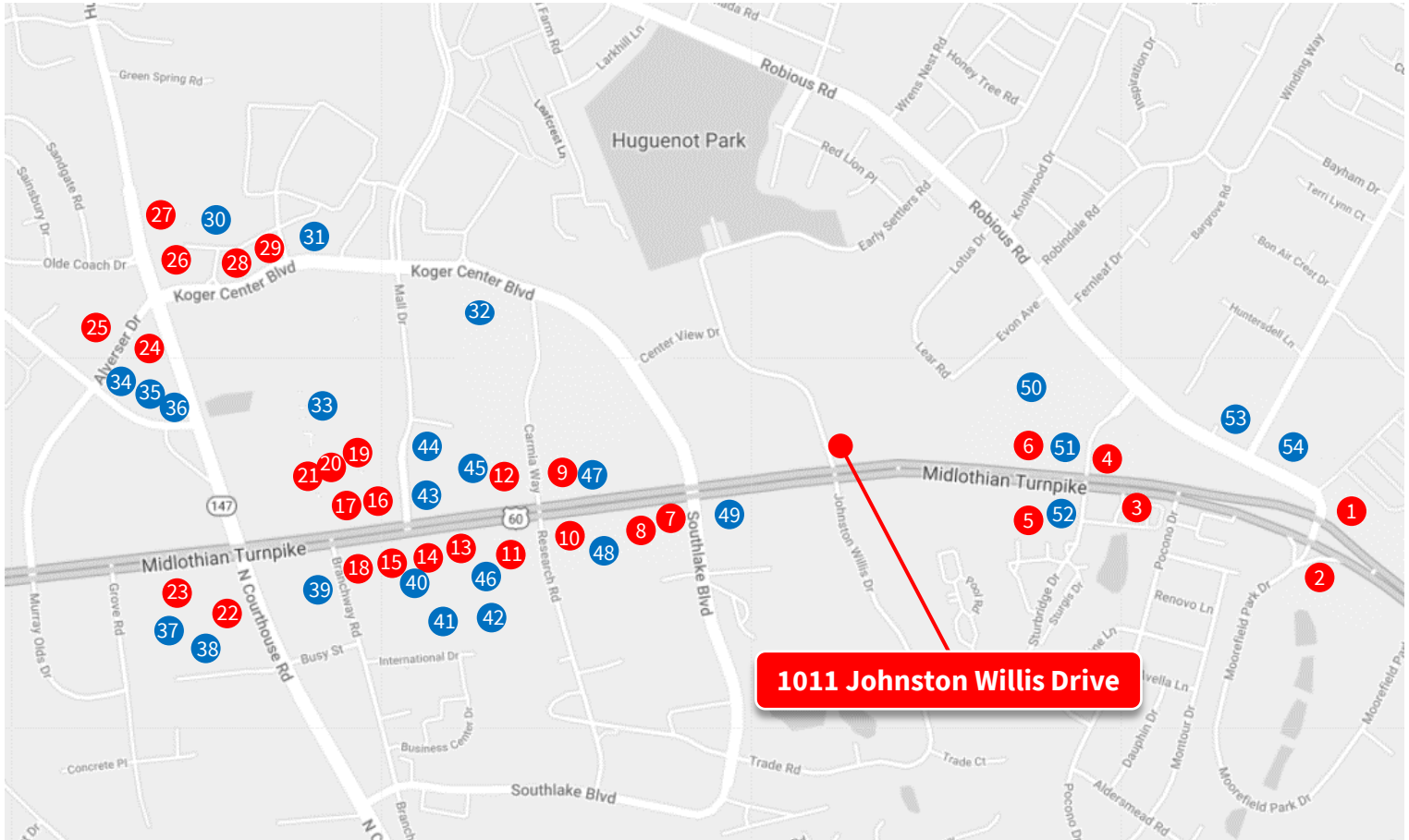
Second floor



Although information has been obtained from sources deemed reliable, neither Owner nor JLL makes any guarantees, warranties or representations, express or implied, as to the completeness or accuracy as to the information contained herein. Any projections, opinions, assumptions or estimates used are for example only. There may be differences between projected and actual results, and those differences may be material. The Property may be withdrawn without notice. Neither Owner nor JLL accepts any liability for any loss or damage suffered by any party resulting from reliance on this information. If the recipient of this information has signed a confidentiality agreement regarding this matter, this information is subject to the terms of that agreement. ©2023 Jones Lang LaSalle IP, Inc. All rights reserved.



Amenity map



Food

- | | |
|----------------------------|------------------------------|
| 1. Hiro Sushi | 16. Chipotle |
| 2. Applebee's Grill | 17. Carrabba's Italian Grill |
| 3. Viet Huang | 18. Burger King |
| 4. Taco Bell | 19. Five Guys |
| 5. Subway | 20. QDOBA |
| 6. Kickback Jack's | 21. Jimmy John's |
| 7. Arby's | 22. Bonchon |
| 8. Casa Grande | 23. Panera Bread |
| 9. Sonic | 24. Noodles and Co. |
| 10. Hardee's | 25. Tazza Kitchen |
| 11. McDonald's | 26. CAVA |
| 12. Starbucks | 27. Mellow Mushroom |
| 13. Wendy's | 28. Texas Roadhouse |
| 14. The Habit Burger Grill | 29. Chick-fil-A |
| 15. Sweet Frog | |

Shopping

- | | |
|-------------------------------|--------------------------|
| 30. Geek Squad | 43. First Community Bank |
| 31. BB&T | 44. USPS |
| 32. Home Depot | 45. Ross |
| 33. Chesterfield Towne Center | 46. Pier 1 |
| 34. DSW | 47. Virginia ABC |
| 35. Office Depot | 48. Atlantic Union Bank |
| 36. The Fresh Market | 49. Wells Fargo |
| 37. Advanced Auto Parts | 50. Burlington |
| 38. Bed Bath & Beyond | 51. SunTrust |
| 39. AutoZone | 52. O'Reilly Auto Parts |
| 40. Verizon | 53. CVS |
| 41. Kohl's | 54. Total Wine & More |
| 42. Target | |

Although information has been obtained from sources deemed reliable, neither Owner nor JLL makes any guarantees, warranties or representations, express or implied, as to the completeness or accuracy as to the information contained herein. Any projections, opinions, assumptions or estimates used are for example only. There may be differences between projected and actual results, and those differences may be material. The Property may be withdrawn without notice. Neither Owner nor JLL accepts any liability for any loss or damage suffered by any party resulting from reliance on this information. If the recipient of this information has signed a confidentiality agreement regarding this matter, this information is subject to the terms of that agreement. ©2023 Jones Lang LaSalle IP, Inc. All rights reserved.



Local medical community



For more information, please contact:

Jimmy Appich
+1 804 200 6420
jimmy.appich@jll.com

Spotty Robins
+1 804 200 6533
spotty.robins@jll.com

Although information has been obtained from sources deemed reliable, neither Owner nor JLL makes any guarantees, warranties or representations, express or implied, as to the completeness or accuracy as to the information contained herein. Any projections, opinions, assumptions or estimates used are for example only. There may be differences between projected and actual results, and those differences may be material. The Property may be withdrawn without notice. Neither Owner nor JLL accepts any liability for any loss or damage suffered by any party resulting from reliance on this information. If the recipient of this information has signed a confidentiality agreement regarding this matter, this information is subject to the terms of that agreement. ©2023 Jones Lang LaSalle IP, Inc. All rights reserved.

