

BRANDYWINE PLAZA

1521-1523 CONCORD PIKE, WILMINGTON, DE

**45,972 SF
AVAILABLE FOR LEASE**



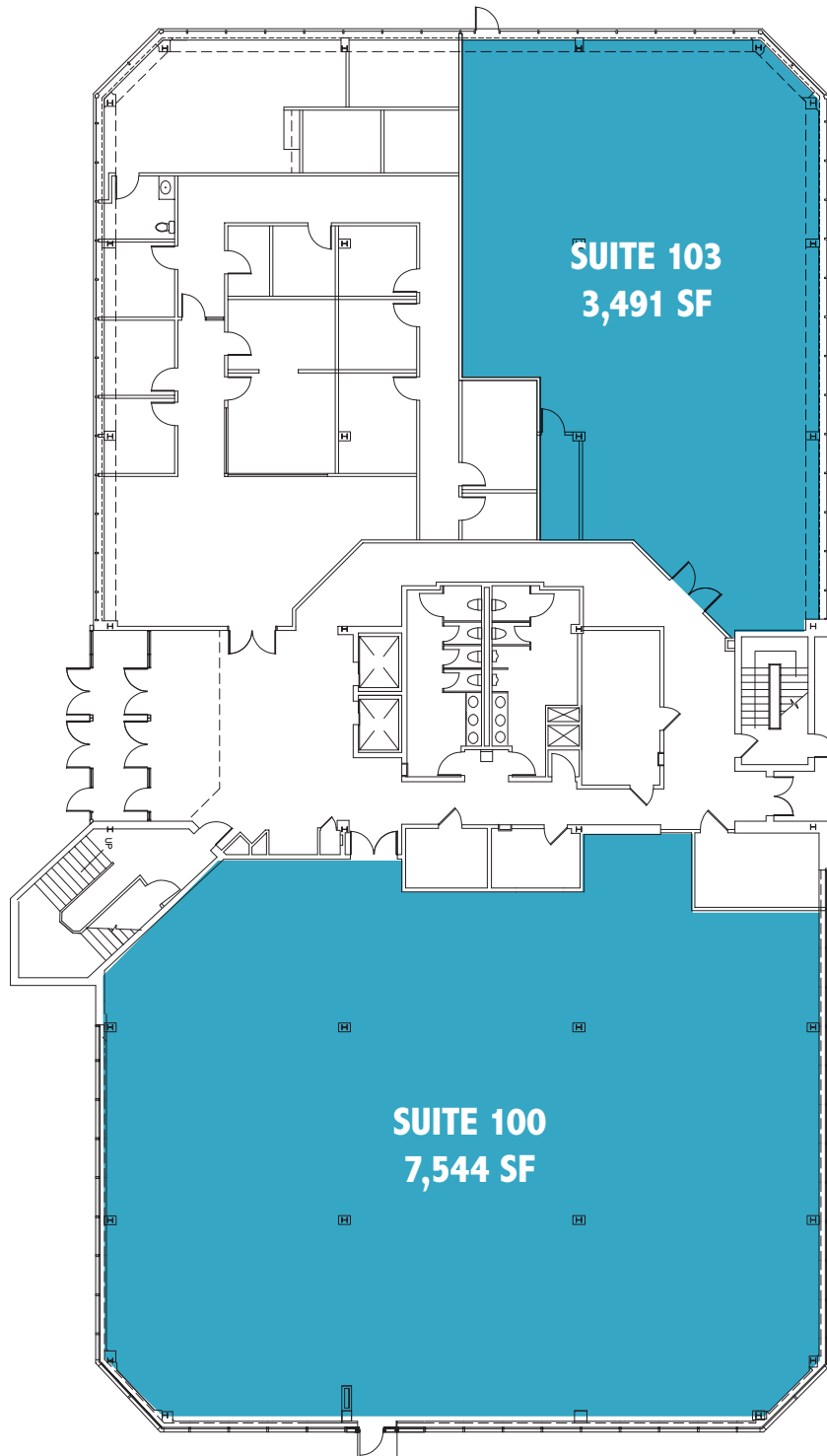
CAPANO
MANAGEMENT



AVAILABILITIES >>

BRANDYWINE PLAZA **EAST**

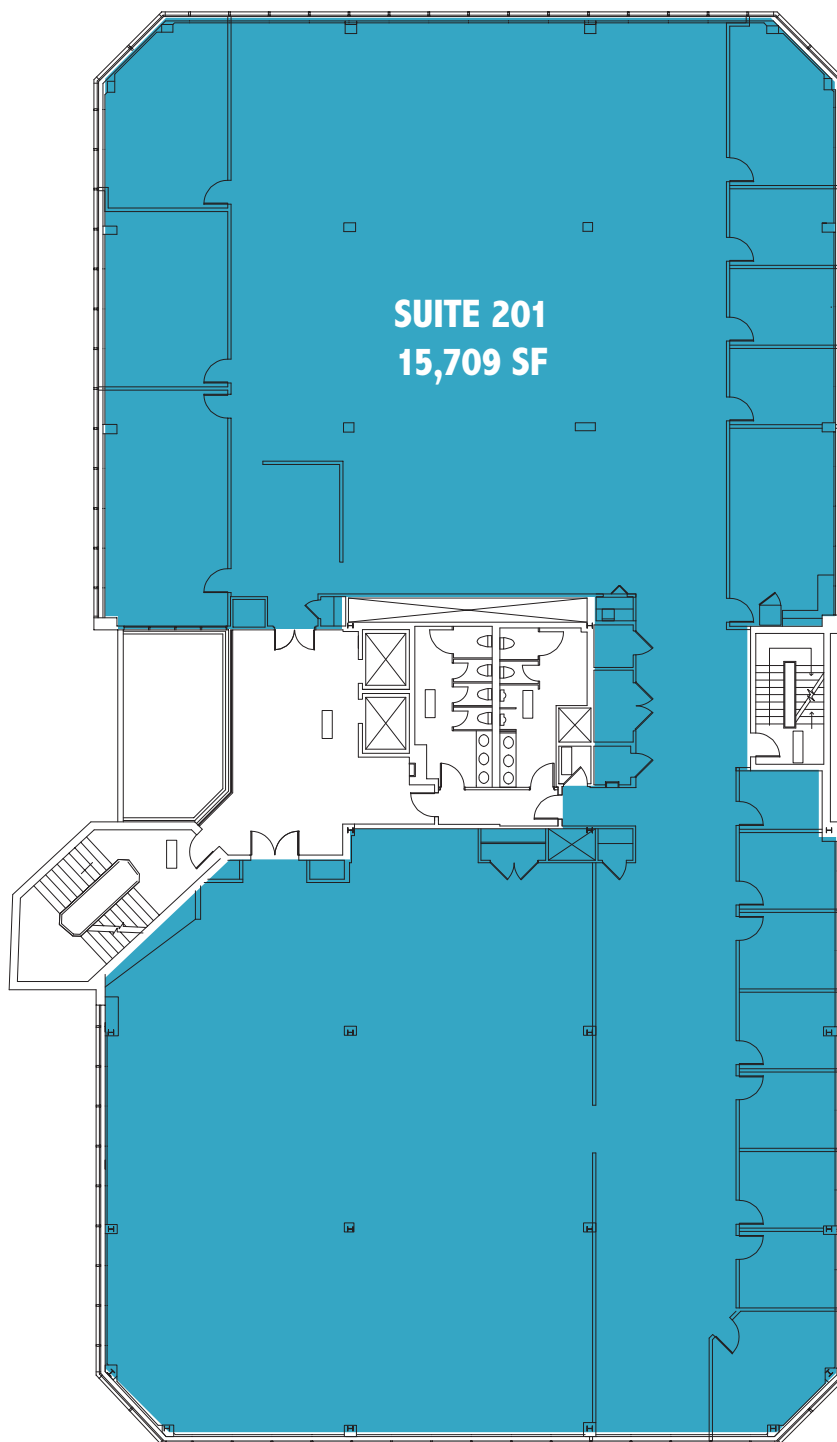
FIRST FLOOR



AVAILABILITIES >>

BRANDYWINE PLAZA **EAST**

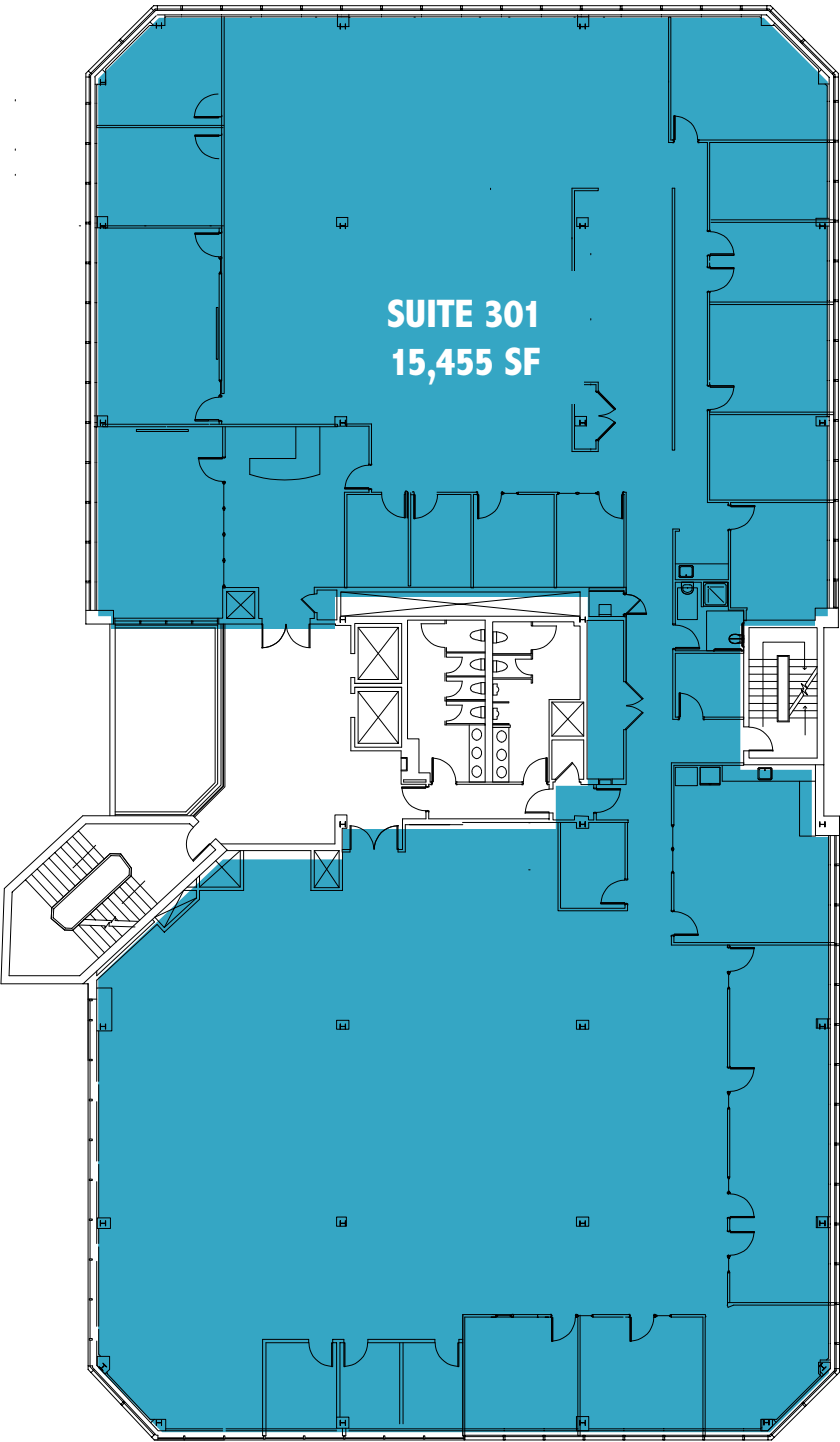
SECOND FLOOR



AVAILABILITIES >>

BRANDYWINE PLAZA EAST

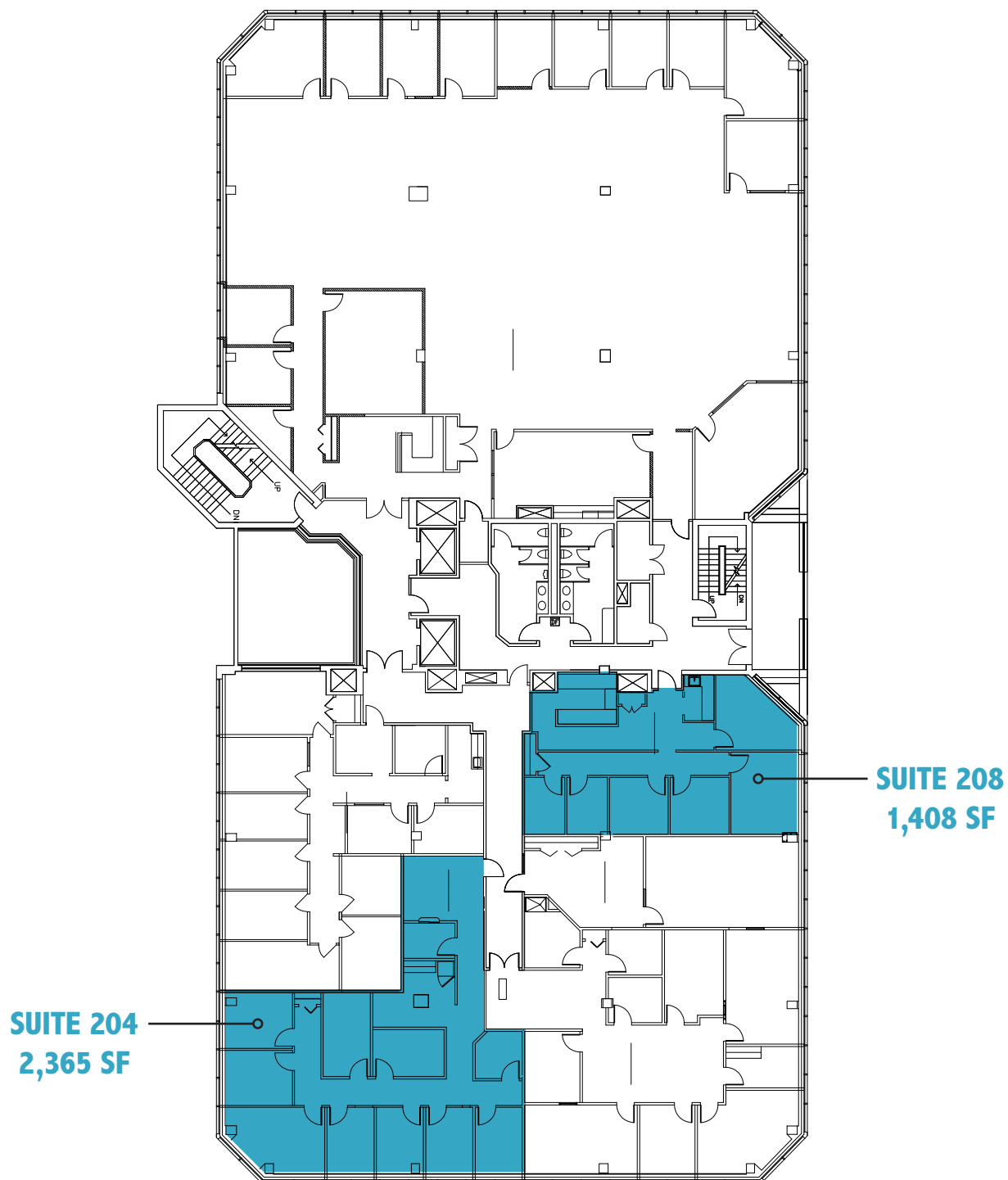
THIRD FLOOR

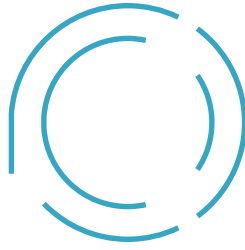


AVAILABILITIES >>

BRANDYWINE PLAZA WEST

SECOND FLOOR





BRANDYWINE PLAZA

1521-1523 CONCORD PIKE, WILMINGTON, DE

Jamie Vari

Executive Vice President

jamie.vari@jll.com

+1 302 356 2862

Cindy Fleming

Broker Associate

cindy.fleming@jll.com

+1 302 356 2866

Jones Lang LaSalle Brokerage, Inc.

1011 Centre Road, Suite 117

Wilmington, DE 19805

+1 302 356 2858



Although information has been obtained from sources deemed reliable, neither Owner nor JLL makes any guarantees, warranties or representations, express or implied, as to the complete-ness or accuracy as to the information contained herein. Any projections, opinions, assumptions or estimates used are for example only. There may be differences between projected and actual results, and those differences may be material. The Property may be withdrawn without notice. Neither Owner nor JLL accepts any liability for any loss or damage suffered by any party resulting from reliance on this information. If the recipient of this information has signed a confidentiality agreement regarding this matter, this information is subject to the terms of that agreement. ©2022. Jones Lang LaSalle IP, Inc. All rights reserved.