



# 2200 Belleair Rd

Clearwater, FL 33764



## Former Bank Branch

Reuse, Repositioning or Redevelopment Opportunity

- ±4,233 s.f. freestanding building
- ±1.02 acres
- ±32 parking spaces

## Contact

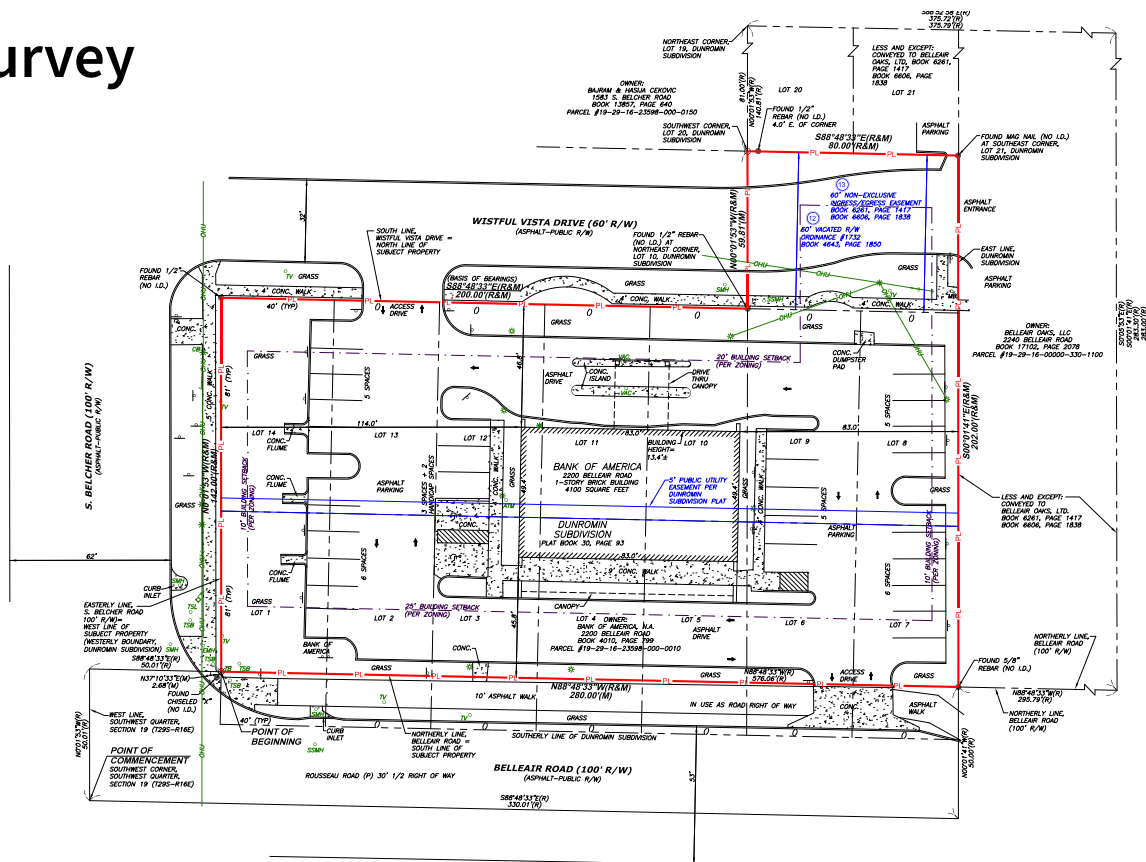


**Billy Rodriguez**  
Senior Vice President  
billy.rodriguez@jll.com  
+1 407 443 3925





**BIDS DUE**  
**01/20/2023**



# Site Survey



## Demographics

POPULATION		HOUSEHOLDS		MEDIAN AGE		MEDIAN HOUSEHOLD INCOME	
	2 MI. 55,515		2 MI. 26,208		2 MI. 50.8		2 MI. \$60,440
	5 MI. 247,833		5 MI. 112,215		5 MI. 48.4		5 MI. \$56,447
	10 MI. 660,599		10 MI. 303,887		10 MI. 50.0		10 MI. \$62,455



Although information has been obtained from sources deemed reliable, JLL does not make any guarantees, warranties or representations, express or implied, as to the completeness or accuracy as to the information contained herein. Any projections, opinions, assumptions or estimates used are for example only. There may be differences between projected and actual results, and those differences may be material. JLL does not accept any liability for any loss or damage suffered by any party resulting from reliance on this information. If the recipient of this information has signed a confidentiality agreement with JLL regarding this matter, this information is subject to the terms of that agreement. ©2022. Jones Lang LaSalle IP, Inc. All rights reserved.