



262 Pacific Street

A Retail Opportunity

Cobble Hill, NY

Between Boerum Place and Smith Street

Space

Ground Floor	1,420 sf
Basement	1,135 sf

Delivery

Q4 2019

Ceiling Height

Ground Floor	22 ft
Basement	13 ft

Frontage

20 ft

Comments

- New Construction just off of Smith Street
- Two blocks away from Bergen Street Station serviced by **F** **G** trains with an annual ridership of 3.5 million
- At the Border of Cobble Hill, Boerum Hill and Downtown Brooklyn

Neighboring Tenants



Ryan P. Condren

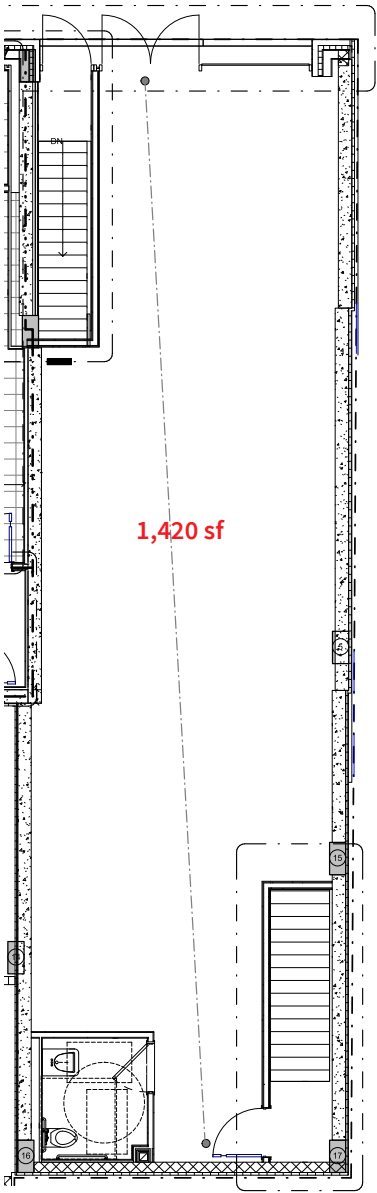
+1 212 220 4117
ryan.condren@am.jll.com

George Danut

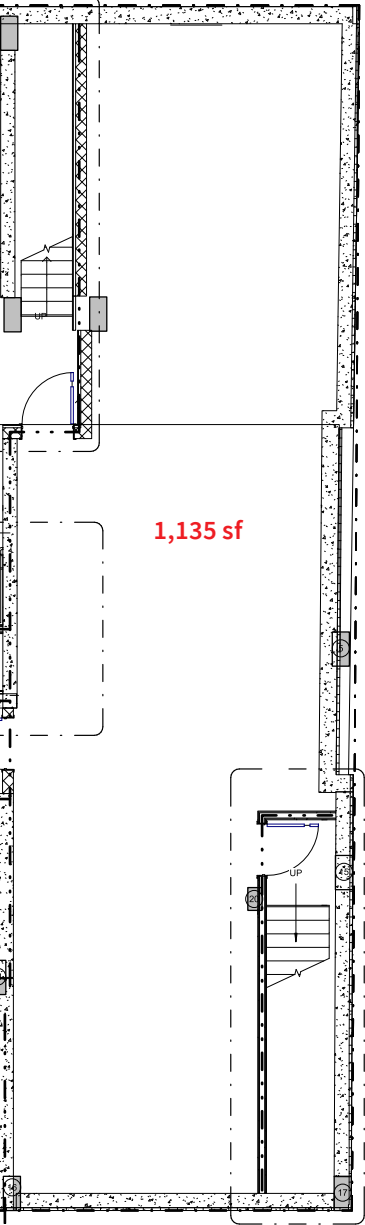
+1 212 220 4121
george.danut@am.jll.com

262 Pacific Street

Ground Floor

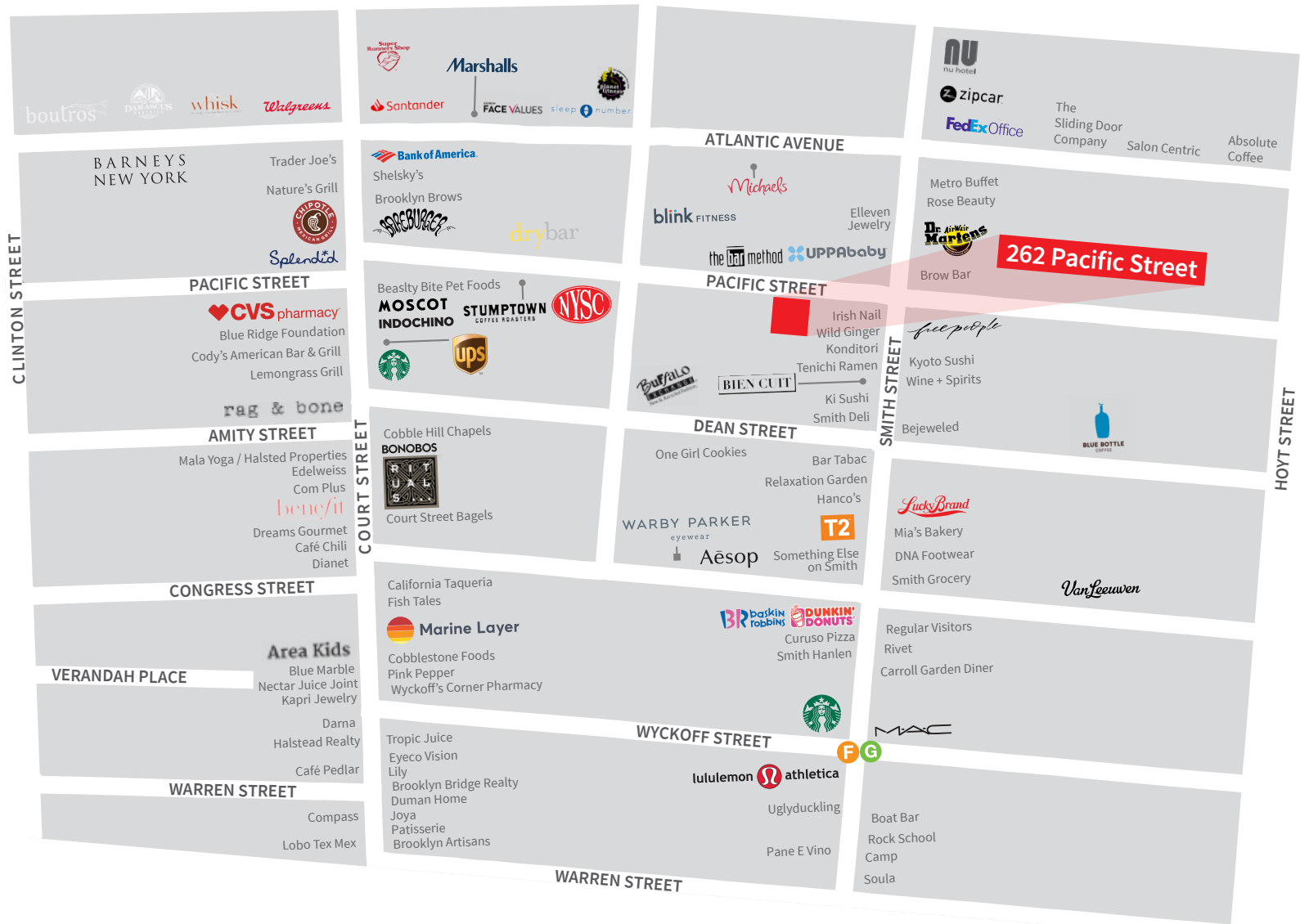


Basement



262 Pacific Street

Area Map



Jones Lang LaSalle Brokerage, Inc. | 330 Madison Avenue New York, NY 10017
DISCLAIMER

Although information has been obtained from sources deemed reliable, neither Owner nor JLL makes any guarantees, warranties or representations, express or implied, as to the completeness or accuracy as to the information contained herein. Any projections, opinions, assumptions or estimates used are for example only. There may be differences between projected and actual results, and those differences may be material. The Property may be withdrawn without notice. Neither Owner nor JLL accepts any liability for any loss or damage suffered by any party resulting from reliance on this information. If the recipient of this information has signed a confidentiality agreement regarding this matter, this information is subject to the terms of that agreement. ©2019. Jones Lang LaSalle IP, Inc. All rights reserved.

