



801 MARKET STREET

PHILADELPHIA, PA

21,961 SF available on the 9th floor



JLL | Jones Lang LaSalle Brokerage, Inc.
1650 Arch Street, Suite 2500
Philadelphia, PA 19103
jll.com/philadelphia | +1 215 988 5500

801 MARKET STREET

13th Floor

12th Floor

11th Floor

10th Floor

9th Floor

8th Floor

7th Floor

VACANT - 21,961 SF

Size: 382,801 SF, 13 stories

Built/Renovated: 1931/2002

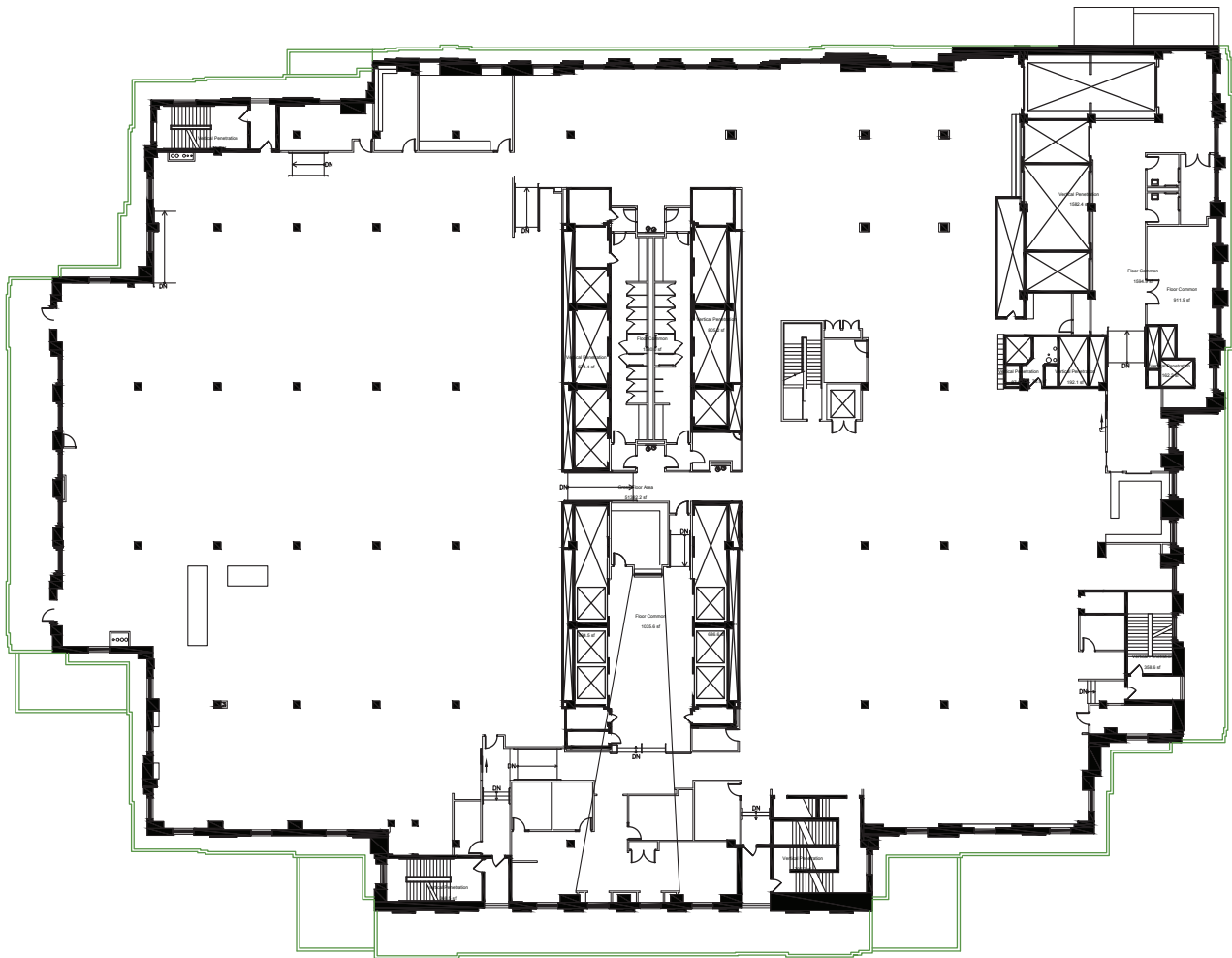
Gross Site Area: 2.09 acres

RAPIDLY DEVELOPING LIVE/WORK/PLAY LOCATION

The Property is located within walking distance of all the historical, retail and dining amenities of Washington Square, Market East, Old City, Chinatown and Midtown Village. Additionally, there is nearly \$1 billion worth of retail, multifamily and office development projects within a 3 block radius of the 801 Market, including the Gallery Redevelopment, Market East Development and the Lit Brothers Apartment Tower.



Typical plan



- HISTORICAL ARCHITECTURE
- PRIVATE OUTDOOR TERRACES
- 12' TO 15' CEILINGS
- 40' X 20' COLUMN SPACING



CONTACT:

Patrick Grenko
+1 215 399 1803
patrick.grenko@am.jll.com

DIRECT TRANSIT ACCESS

801 Market provides tenants with direct access to SEPTA's Jefferson Regional Rail Station, 8th St. Market-Frankford Line and PATCO's Speedline. Additionally, the Property is serviced by 18 local and regional bus routes via SEPTA and NJ Transit. Jefferson Station is a stop for all 14 of SEPTA's Regional Rail lines.

Direct access from building to transportation hub and adjacent to 1200 car parking garage. Convenient access to numerous retail and dining establishments including a full-service restaurant and a food court in the building.



Although information has been obtained from sources deemed reliable, neither Owner nor JLL makes any guarantees, warranties or representations, express or implied, as to the completeness or accuracy as to the information contained herein. Any projections, opinions, assumptions or estimates used are for example only. There may be differences between projected and actual results, and those differences may be material. The Property may be withdrawn without notice. Neither Owner nor JLL accepts any liability for any loss or damage suffered by any party resulting from reliance on this information. If the recipient of this information has signed a confidentiality agreement regarding this matter, this information is subject to the terms of that agreement. ©2021. Jones Lang LaSalle IP, Inc. All rights reserved.