

# 33 seventh avenue

WEST  
VILLAGE  
RETAIL



former duane reade store 11176

## location

33 Seventh Avenue  
Northeast corner of West 12th Street

## size

Ground Floor 9,775 sf

## asking rent

\$950,000 per annum gross

## frontage

156 ft on Seventh Avenue

## possession

Immediate

## term

3/31/31

## comments

- Located in the West Village on the border of Chelsea and the Meatpacking district
- Blocks from Google's Headquarters and Chelsea Market
- Adjacent to Lenox Health Greenwich Village
- Steps from the 14<sup>th</sup> Street Station with a 29,326,884 total annual ridership servicing the **A C E L** (via 8<sup>th</sup> Ave.) and the **1 2 3 F M L** (via 6<sup>th</sup> Ave.)

## neighboring retail



Aēsop

EQUINOX



BABY  
BRAJA



WELLS  
FARGO

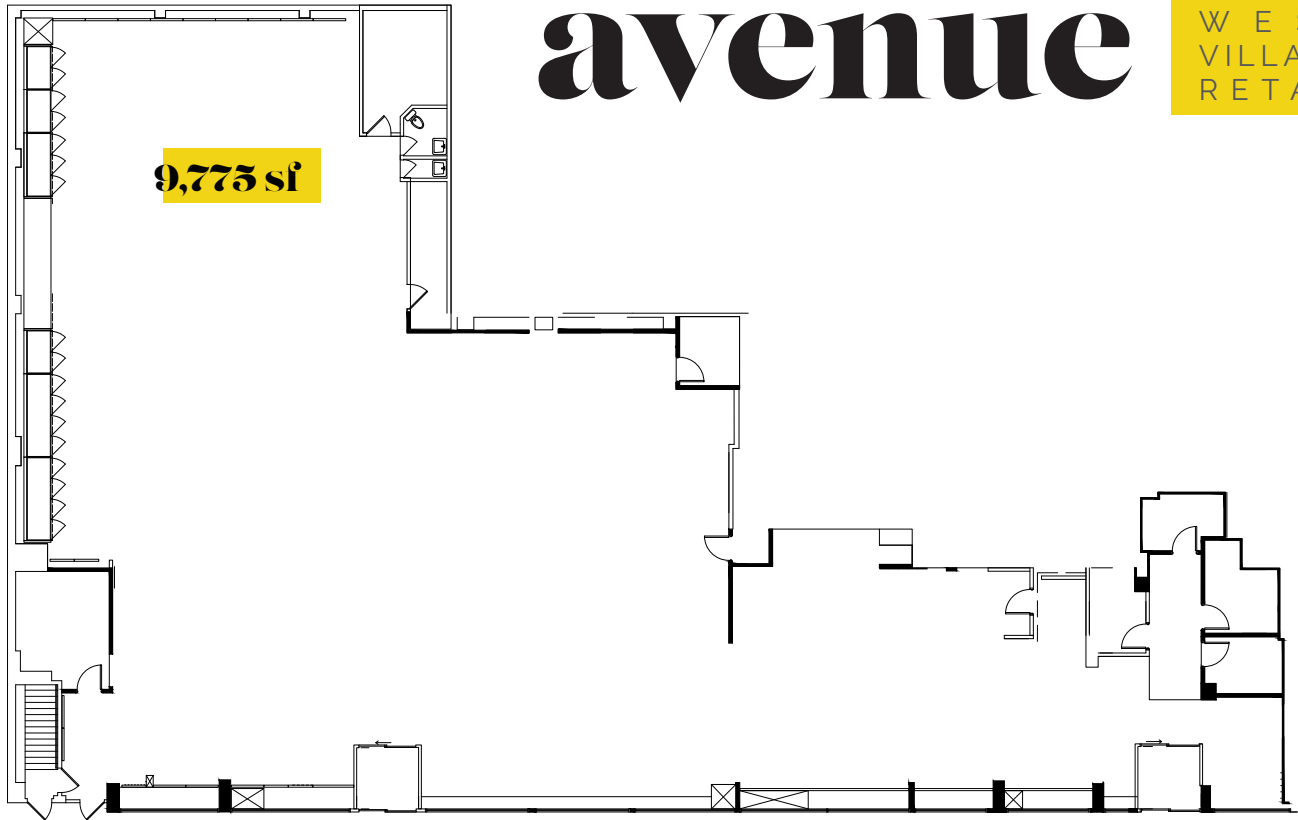
michael riley  
+1 212 812 5901 | michael.riley@jll.com

patrick a. smith  
+1 212 812 5888 | patricka.smith@jll.com



# 33 seventh avenue

WEST  
VILLAGE  
RETAIL



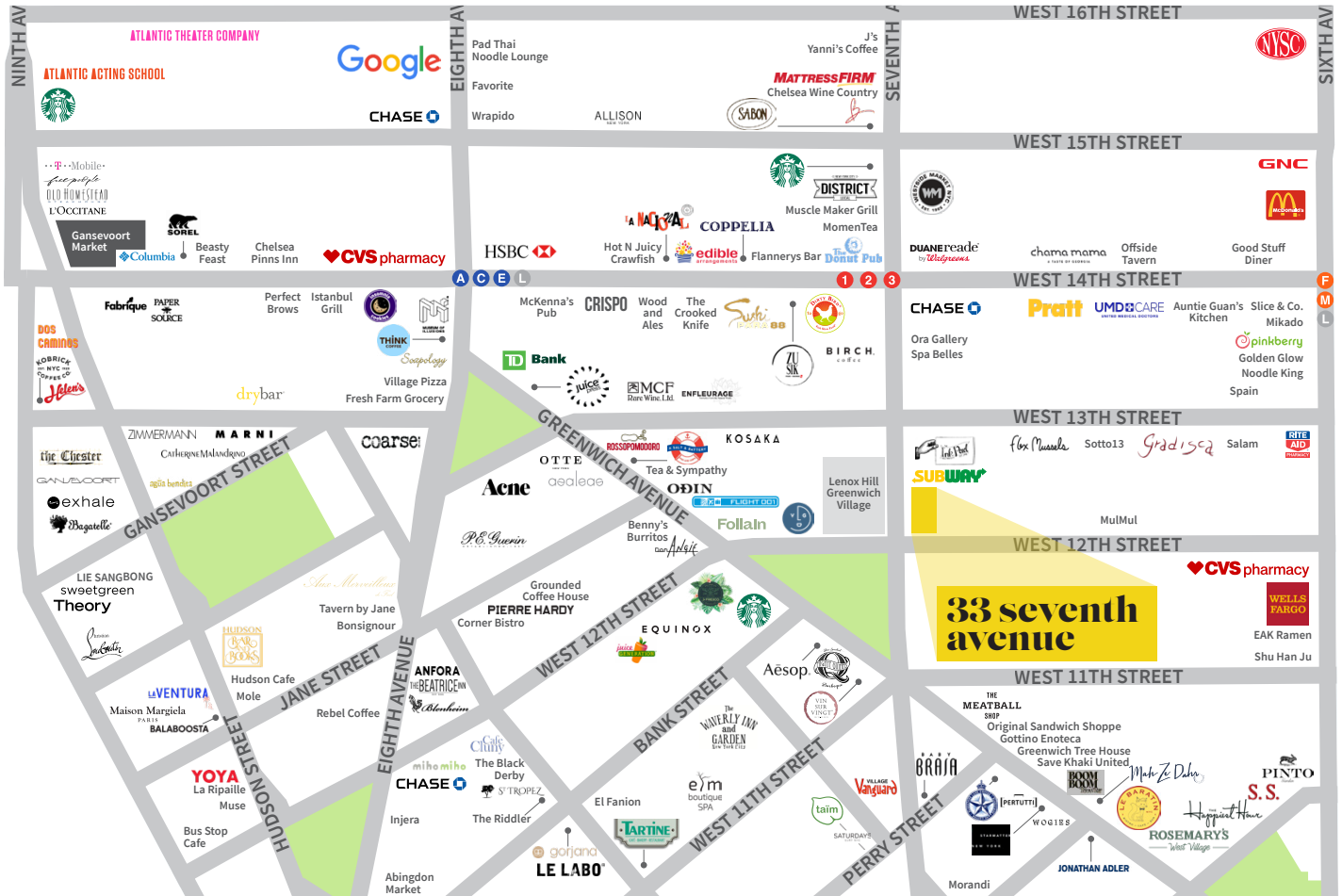
WEST 12<sup>TH</sup> STREET

SEVENTH AVENUE



# 33 seventh avenue

WEST  
VILLAGE  
RETAIL



**17,621**

area employees

**1,673,079**

total office sf

**18,089**

area residents

**\$129,972**

median income