



[View Additional Photos](#)

For Lease and Sale

±44,000 s.f. (Divisible to ± 9,000 s.f.)
Shell complete Q2 2020

Site features:

- Total size: ±44,000 s.f. (400' x 110')
- Office: to suit
- Divisible to: ±9,000 s.f.
- Rear load configuration
- 24' clear height
- Column spacing: 32' x 55'
- Loading access: 22 dock high doors (9' x 10')
- Truck court depth: 120'
- ESFR sprinklers
- Power: 1200 amps, 3-phase
- Passenger vehicle parking: 119 spaces (2.7:1,000)
- Drive-in ramps with 14' x 16' oversized doors
- Location:
 - 0.6 miles west of Beltway 8
 - ±6 miles to I-10
 - ±19 miles to Bush Intercontinental Airport
- For distribution and light industrial uses
- Pricing: Contact Broker for Pricing

**SIGNAGE AVAILABLE DIRECTLY ON HWY. 90
VISIBLE FROM BELTWAY 8**

Liberty Lakes Business Park
14700 Crosby Fwy (Hwy 90)
Houston, Texas 77049

Mark Nicholas, SIOR

+1 713 888 4024

mark.nicholas@am.jll.com

Richard Quarles, SIOR

+1 713 888 4019

richard.quarles@am.jll.com

Joe Berwick

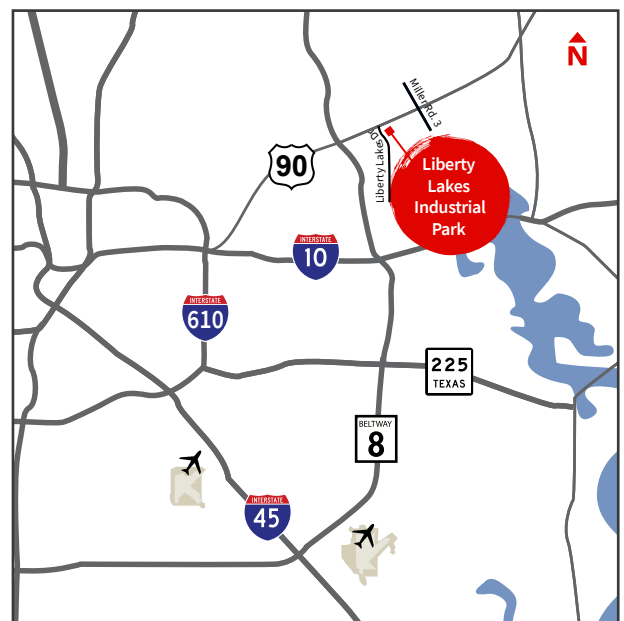
+1 713 425 5842

joe.berwick@am.jll.com

Will Clay

+1 713 425 1810

will.clay@am.jll.com

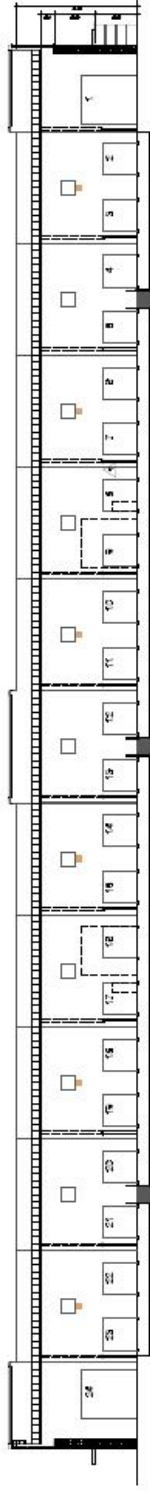


For Lease

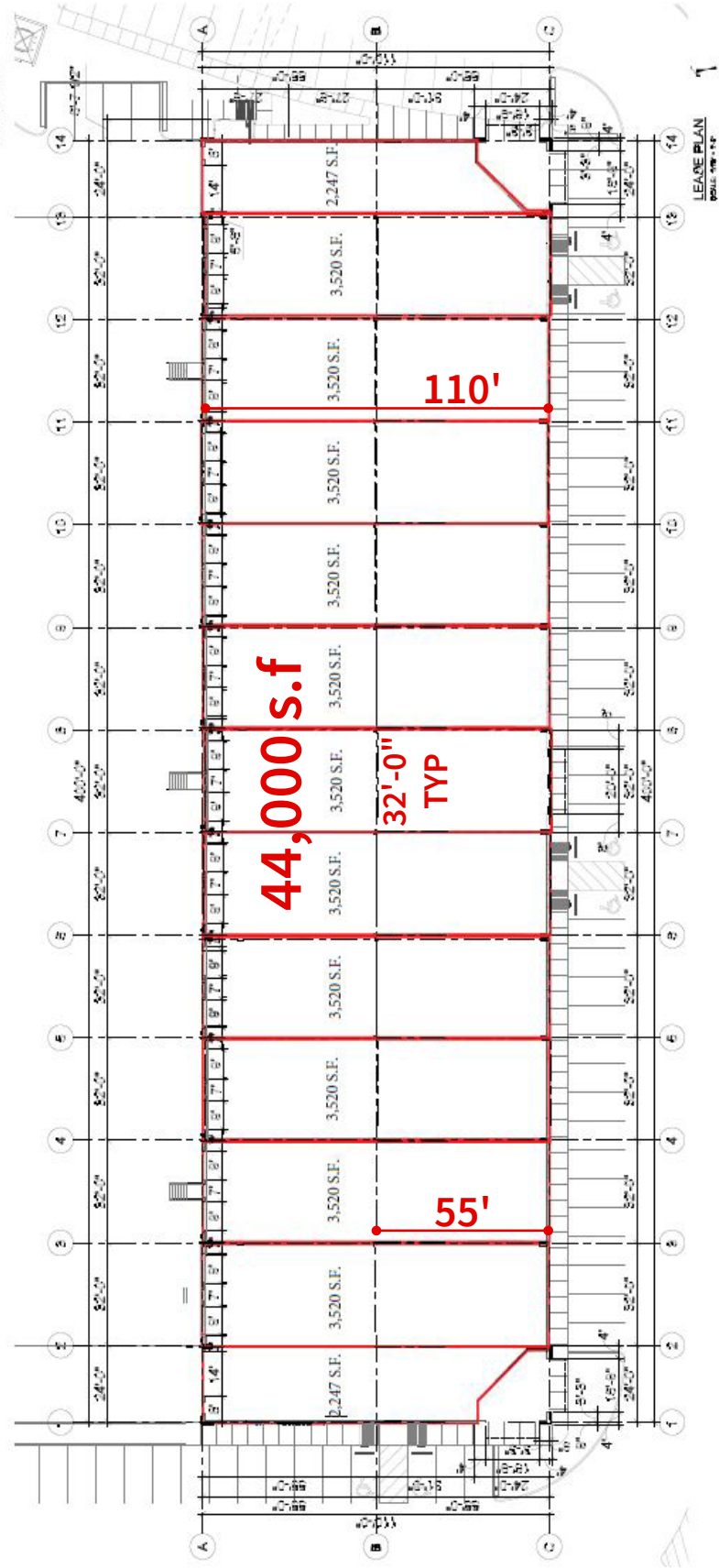
±44,000 s.f. available
(Divisible to ± 9,000 s.f.)

Liberty Lakes Business Park

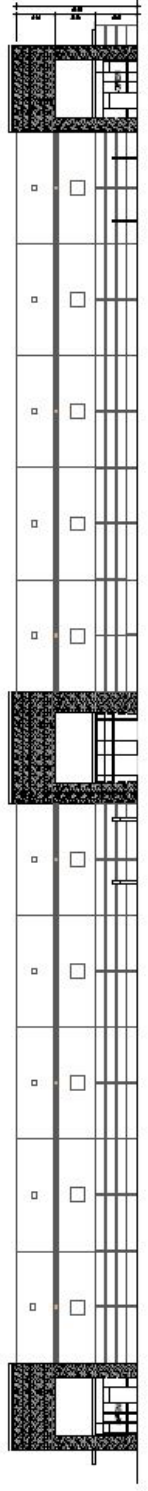
14700 Crosby Fwy | Houston, Texas 77049



SOUTH ELEVATION
SCALE: 1/8" = 1'-0"



LEASE PLAN
SCALE: 1/8" = 1'-0"



NORTH ELEVATION
SCALE: 1/8" = 1'-0"

For Lease

±44,000 s.f. available

(Divisible to ± 9,000 s.f.)

Liberty Lakes Business Park

14700 Crosby Fwy | Houston, Texas 77049



Although information has been obtained from sources deemed reliable, JLL does not make any guarantees, warranties or representations, express or implied, as to the completeness or accuracy as to the information contained herein. Any projections, opinions, assumptions or estimates used are for example only. There may be differences between projected and actual results, and those differences may be material. JLL does not accept any liability for any loss or damage suffered by any party resulting from reliance on this information. If the recipient of this information has signed a confidentiality agreement with JLL regarding this matter, this information is subject to the terms of that agreement. ©2021 Jones Lang LaSalle IP, Inc. All rights reserved.

