

Albemarle Point Place

*Albemarle Point Place
Chantilly, VA*

DC LIGHT
Albemarle Point Place

**JLL METRO DC
INDUSTRIAL TEAM**

John Dettleff
703.485.8831
john.dettleff@am.jll.com

Dan Coats
703.891.8410
dan.coats@am.jll.com

Abbot Wallenborn
703.891.8437
abbot.wallenborn@am.jll.com

Bauer Lustig
703.485.8884
bauer.lustig@am.jll.com



**HIGH QUALITY
OFFICE SPACE**



**IMMEDIATE
ACCESS TO
RT 28 & RT 50**



**LIGHT
INDUSTRIAL
SPACE**



**INSTITUTIONALLY
OWNED AND
MANAGED**

E L I O N



14434 Albemarle Point Place

DC LIGHT
Albemarle Point Place

14432 Albemarle Point Place

14426 Albemarle Point Place

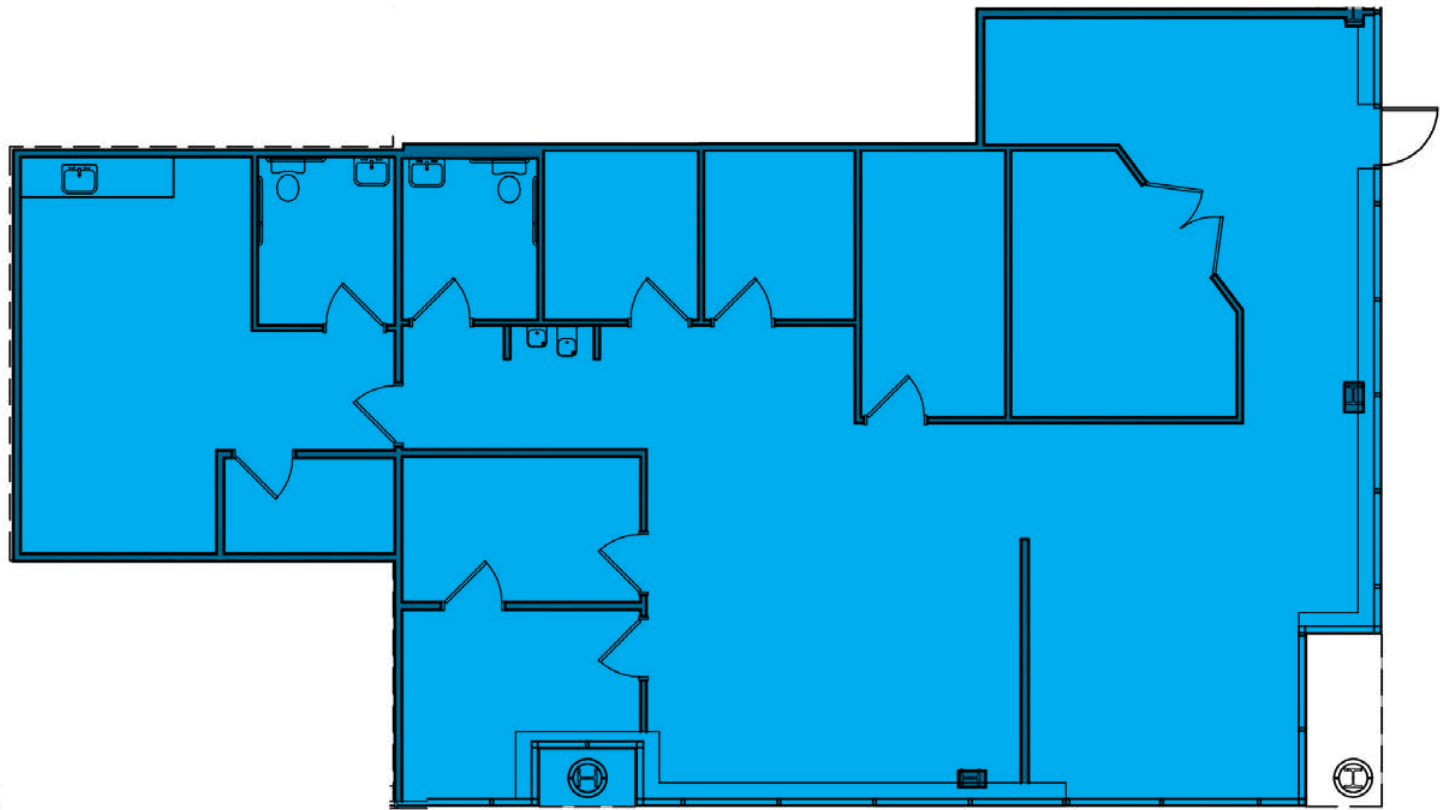
14428 Albemarle Point Place

14424 Albemarle Point Place

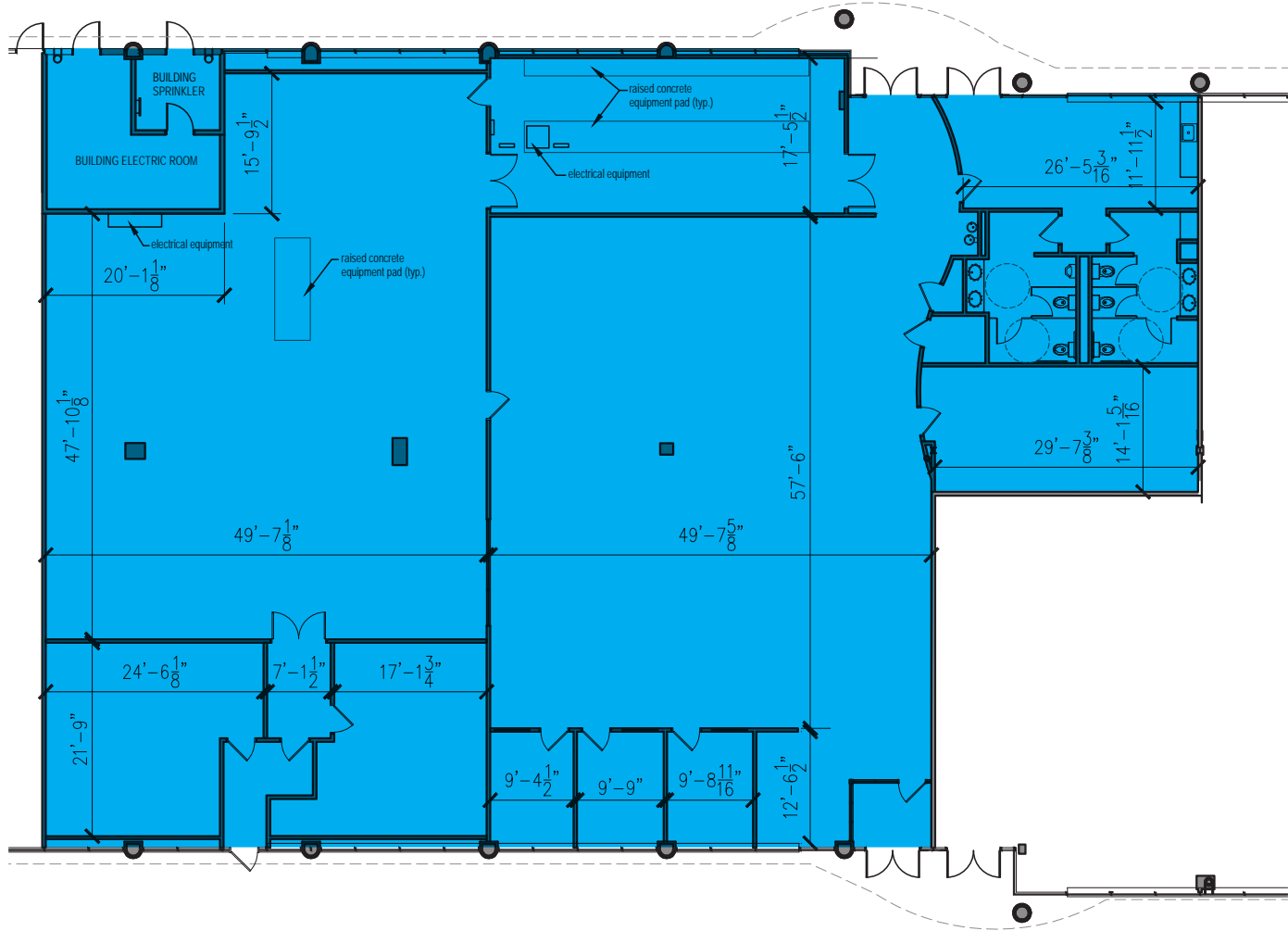
14420 Albemarle Point Place



14424 Albemarle Point Place
Suite 110B | 2,245 SF | OFFICE



14426 Albemarle Point Place
Suite 150A | 9,458 SF | OFFICE



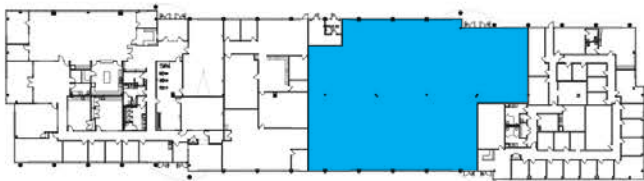
Key Plan



Front



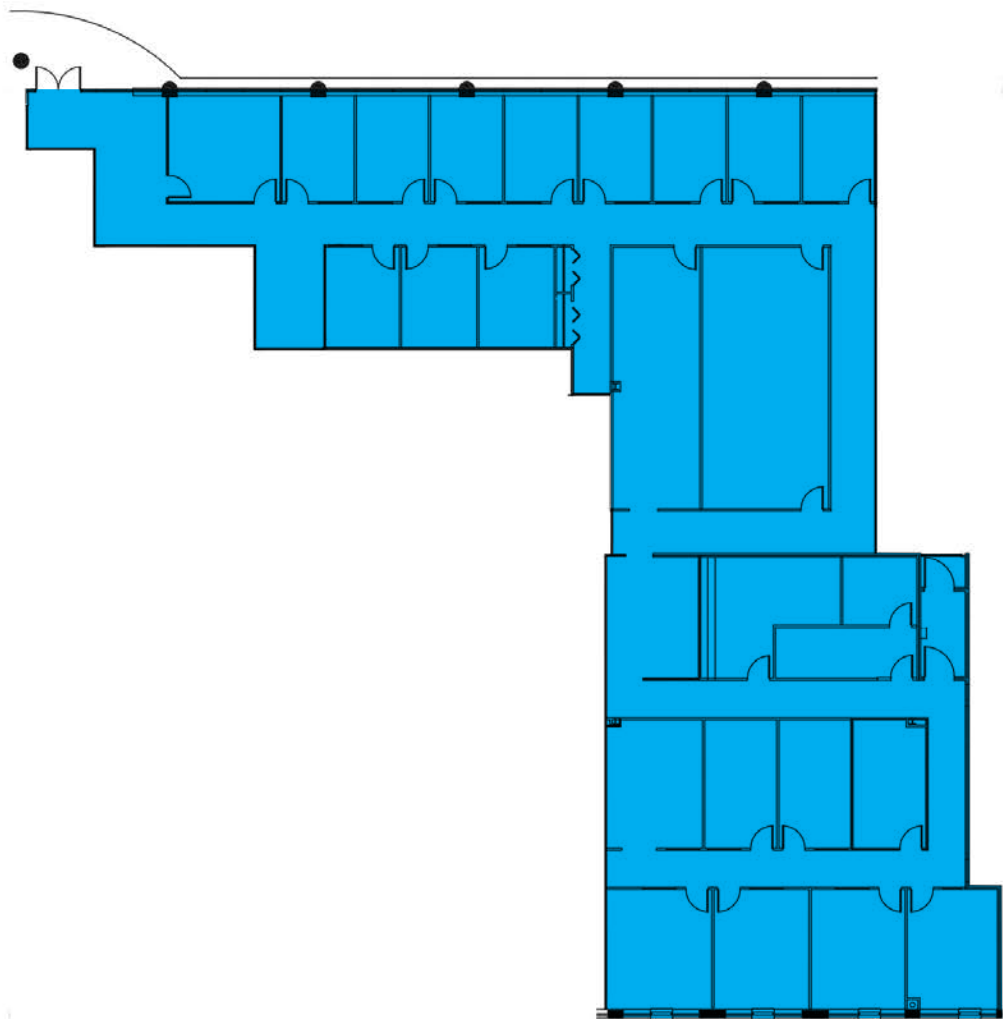
Key Plan



Front



14432 Albemarle Point Place
Suite 200A | 7,559 SF | OFFICE

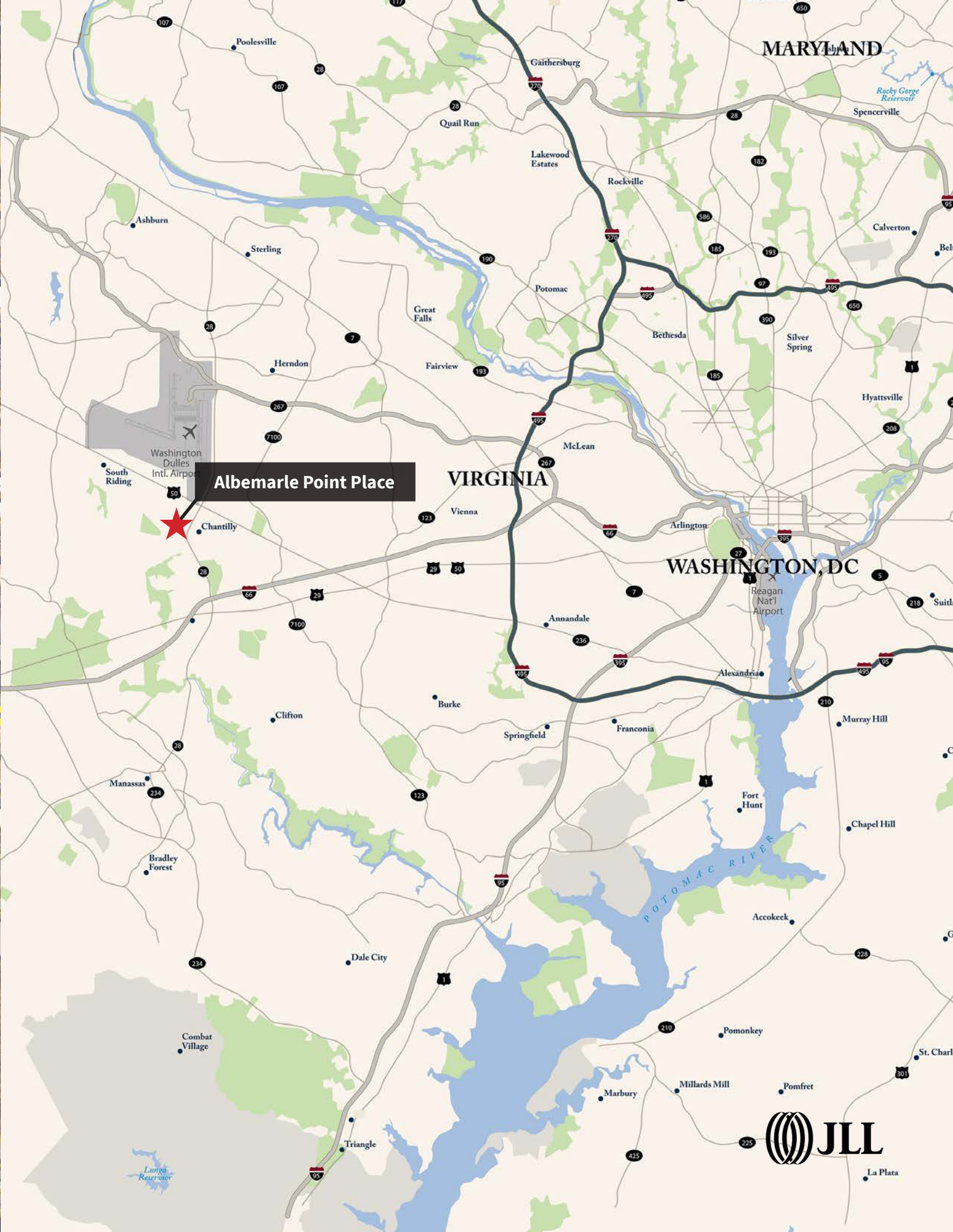


Key Plan



Front





DC LIGHT
Albemarle Point Place

**FOR MORE INFORMATION,
PLEASE CONTACT:**

John Dettleff
703.485.8831
john.dettleff@am.jll.com

Dan Coats
703.891.8410
dan.coats@am.jll.com

Abbot Wallenborn
703.891.8437
abbot.wallenborn@am.jll.com

Bauer Lustig
703.485.8884
bauer.lustig@am.jll.com



E L I O N

Although information has been obtained from sources deemed reliable, neither Owner nor JLL makes any guarantees, warranties or representations, express or implied, as to the completeness or accuracy as to the information contained herein. Any projections, opinions, assumptions or estimates used are for example only. There may be differences between projected and actual results, and those differences may be material. The Property may be withdrawn without notice. Neither Owner nor JLL accepts any liability for any loss or damage suffered by any party resulting from reliance on this information. If the recipient of this information has signed a confidentiality agreement regarding this matter, this information is subject to the terms of that agreement. ©2022. Jones Lang LaSalle IP, Inc. All rights reserved.