

PREMIUM CREATIVE OFFICE SPACE IN HEART OF  
GLENWOOD SOUTH **FOR SUBLEASE**

# THE CREAMERY

## 410 GLENWOOD AVE

**RYAN LAWRENCE**

919 424 8184

[ryan.lawrence@am.jll.com](mailto:ryan.lawrence@am.jll.com)

**CASEY MCCULLOUGH**

919 424 8453

[casey.mccullough@am.jll.com](mailto:casey.mccullough@am.jll.com)



**DISCLAIMER**

© 2021 Jones Lang LaSalle IP, Inc. All rights reserved. All information contained herein is from sources deemed reliable; however, no representation or warranty is made to the accuracy thereof.

FOR SUBLEASE

# 410 GLENWOOD AVE



OPEN OFFICE

## PROPERTY OVERVIEW

- 19,374 RSF Available immediately
- Plug & Play creative office
- Existing Furniture, Fixtures, and Equipment negotiable
- Access to parking (45 spaces)
- Exclusive use of outdoor patio
- Sublease available through 5/31/2025



PRIVATE PATIO



BOARD ROOM



BREAK ROOM



TRAINING ROOM



**RYAN LAWRENCE**

919 424 8184

[ryan.lawrence@am.jll.com](mailto:ryan.lawrence@am.jll.com)

**CASEY MCCULLOUGH**

919 424 8453

[casey.mccullough@am.jll.com](mailto:casey.mccullough@am.jll.com)

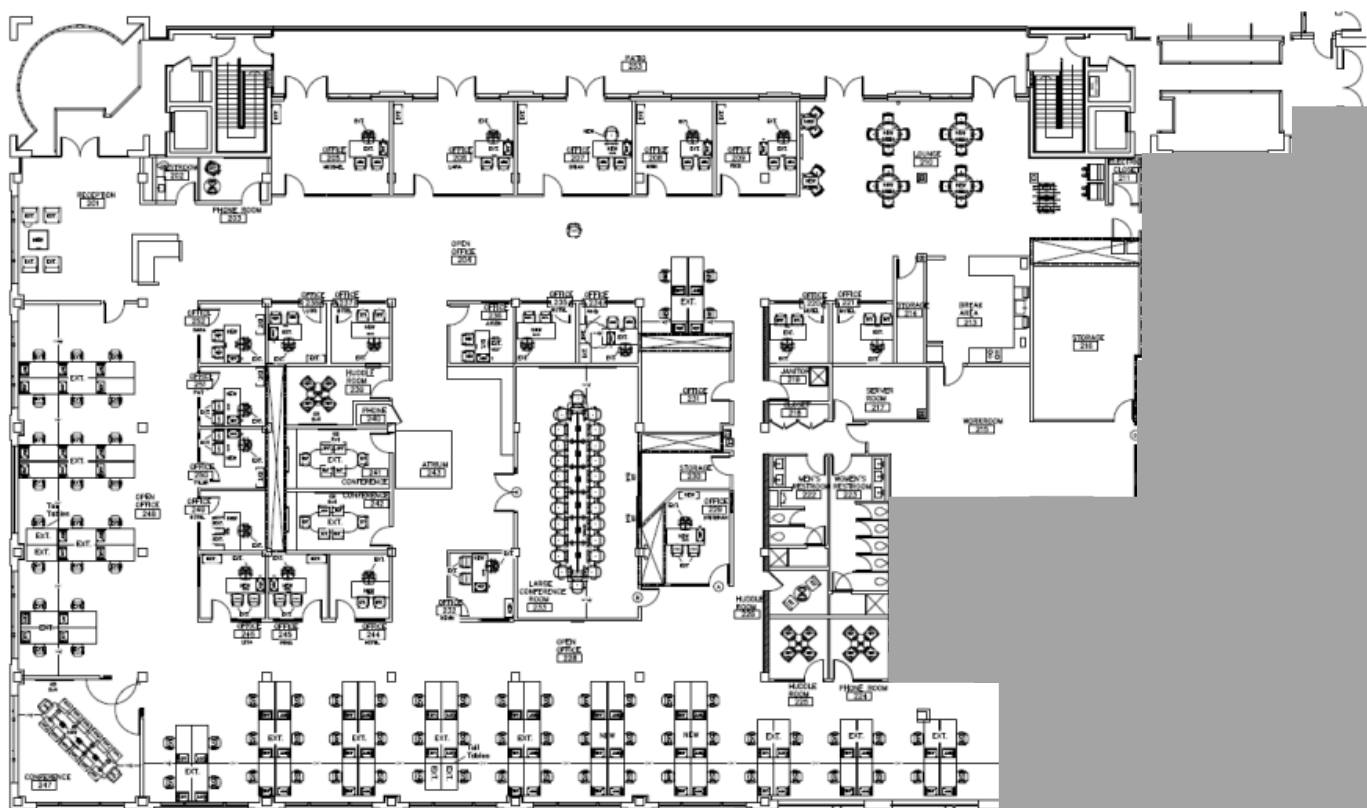


FOR SUBLEASE

410 GLENWOOD AVE



19,374 RSF AVAILABLE



[CLICK HERE FOR VIRTUAL TOUR](#)



RYAN LAWRENCE

919 424 8184

[ryan.lawrence@am.jll.com](mailto:ryan.lawrence@am.jll.com)

CASEY MCCULLOUGH

919 424 8453

[casey.mccullough@am.jll.com](mailto:casey.mccullough@am.jll.com)

Although information has been obtained from sources deemed reliable, neither Owner nor JLL makes any guarantees, warranties or representations, express or implied, as to the completeness or accuracy as to the information contained herein. Any projections, opinions, assumptions or estimates used are for example only. There may be differences between projected and actual results, and those differences may be material. The Property may be withdrawn without notice. Neither Owner nor JLL accepts any liability for any loss or damage suffered by any party resulting from reliance on this information. If the recipient of this information has signed a confidentiality agreement regarding this matter, this information is subject to the terms of that agreement. ©2019 Jones Lang LaSalle IP, Inc. All rights reserved.

FOR SUBLEASE

# 410 GLENWOOD AVE



## The Creamery

Located adjacent to the heart of Downtown & the Warehouse district, Glenwood South is home to dozens of restaurants & bars, residential units, hotel rooms, workout studios and provides easy access to public transportation.

Walkable Amenities Include:



**RYAN LAWRENCE**

919 424 8184

[ryan.lawrence@am.jll.com](mailto:ryan.lawrence@am.jll.com)

**CASEY MCCULLOUGH**

919 424 8453

[casey.mccullough@am.jll.com](mailto:casey.mccullough@am.jll.com)

Although information has been obtained from sources deemed reliable, neither Owner nor JLL makes any guarantees, warranties or representations, express or implied, as to the completeness or accuracy as to the information contained herein. Any projections, opinions, assumptions or estimates used are for example only. There may be differences between projected and actual results, and those differences may be material. The Property may be withdrawn without notice. Neither Owner nor JLL accepts any liability for any loss or damage suffered by any party resulting from reliance on this information. If the recipient of this information has signed a confidentiality agreement regarding this matter, this information is subject to the terms of that agreement. ©2019 Jones Lang LaSalle IP, Inc. All rights reserved.