



# Retail For Lease

300 N Andrews Avenue  
Fort Lauderdale





# property overview

300 N Andrews Avenue Fort Lauderdale, FL 33301

**Mixed-use  
1.3mm SF  
development**  
by BH3 Management

**Two, 380'  
-story towers**  
**featuring over  
250,000 SF  
of office space,**  
representing the next- gen  
office space developed in  
**Broward's Downtown Fort  
Lauderdale submarket in more  
than a decade**

**Estimated Delivery in 2022**

**75,932 SF**  
**of retail space**

**252** residential  
units

**+/- 1,300**  
on-site parking spaces

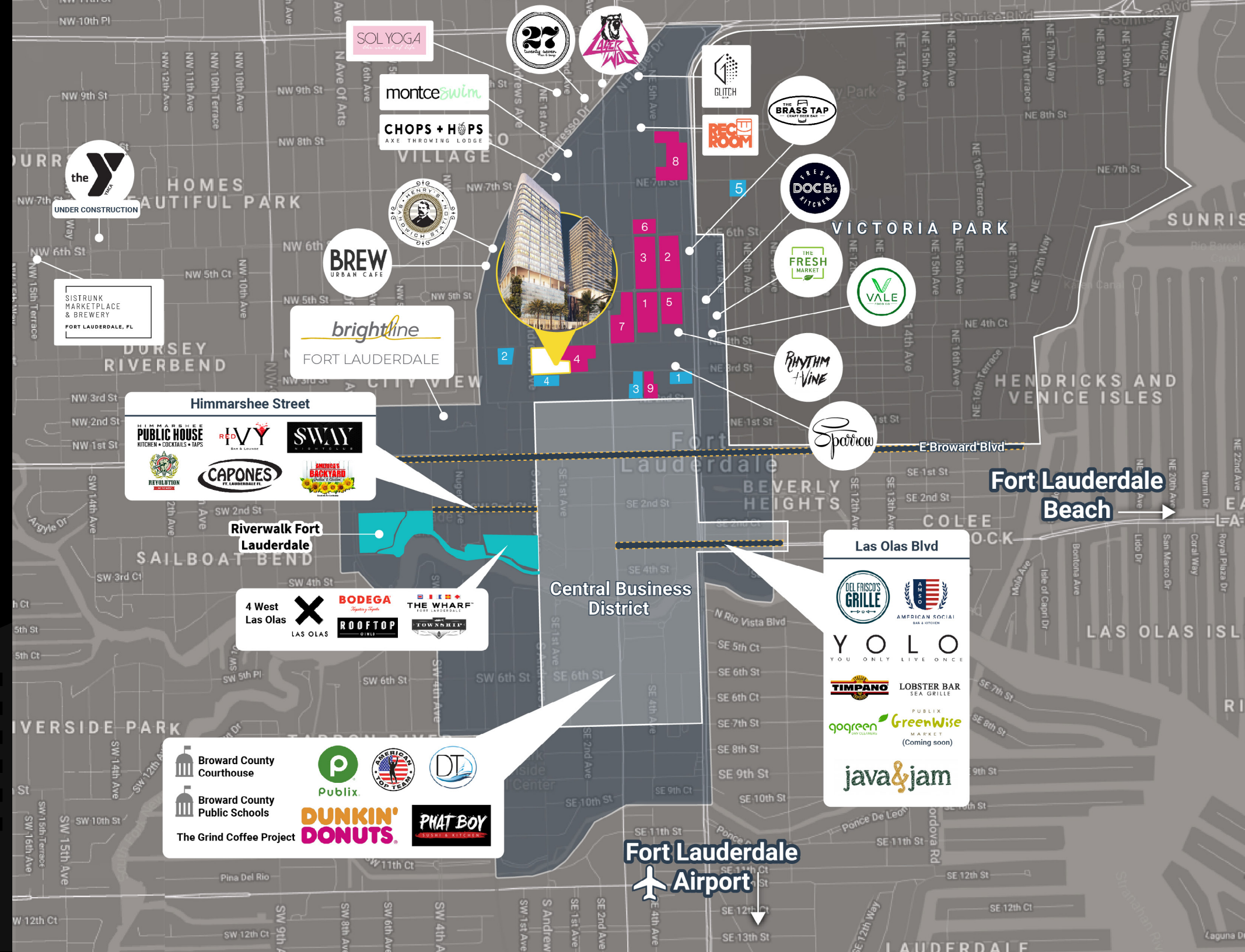
- In addition to DNA, over 2,500 new residential units and 1,000 new hotel rooms are within walking distance
- Close proximity to Fort Lauderdale's CBD with easy access to Brightline Station
- Surrounded by the areas top residential, retail, and hotels

# area overview

300 N Andrews Avenue Fort Lauderdale, FL 33301

- RESIDENTIAL BUILDINGS**
1. AMLI Flagler Village
  2. The Manor
  3. Solmar on 6th
  4. The Whitney
  5. The Edge
  6. Eon Flagler
  7. Pearl Flagler Village
  8. Quantum Flagler
  9. The Rise
  10. Motif

- HOTELS**
1. The Dalmar & Element Hotel
  2. Flagler Village Hotel
  3. Aloft Hotel
  4. Hampton Inn
  5. Edgewater Hotel





# floor plans

300 N Andrews Avenue Fort Lauderdale, FL 33301

**56,912 SF**  
of contiguous space

## GROUND FLOOR

- 15,881 SF
- 5,658 SF
- 4,002 SF
- 3,310 SF

Ceiling Heights 24'

## LEVEL 2

- 17,005 SF

Ceiling Heights 18'6"  
Outdoor - Up to 8,614 SF

## LEVEL 3

- 14,265 SF

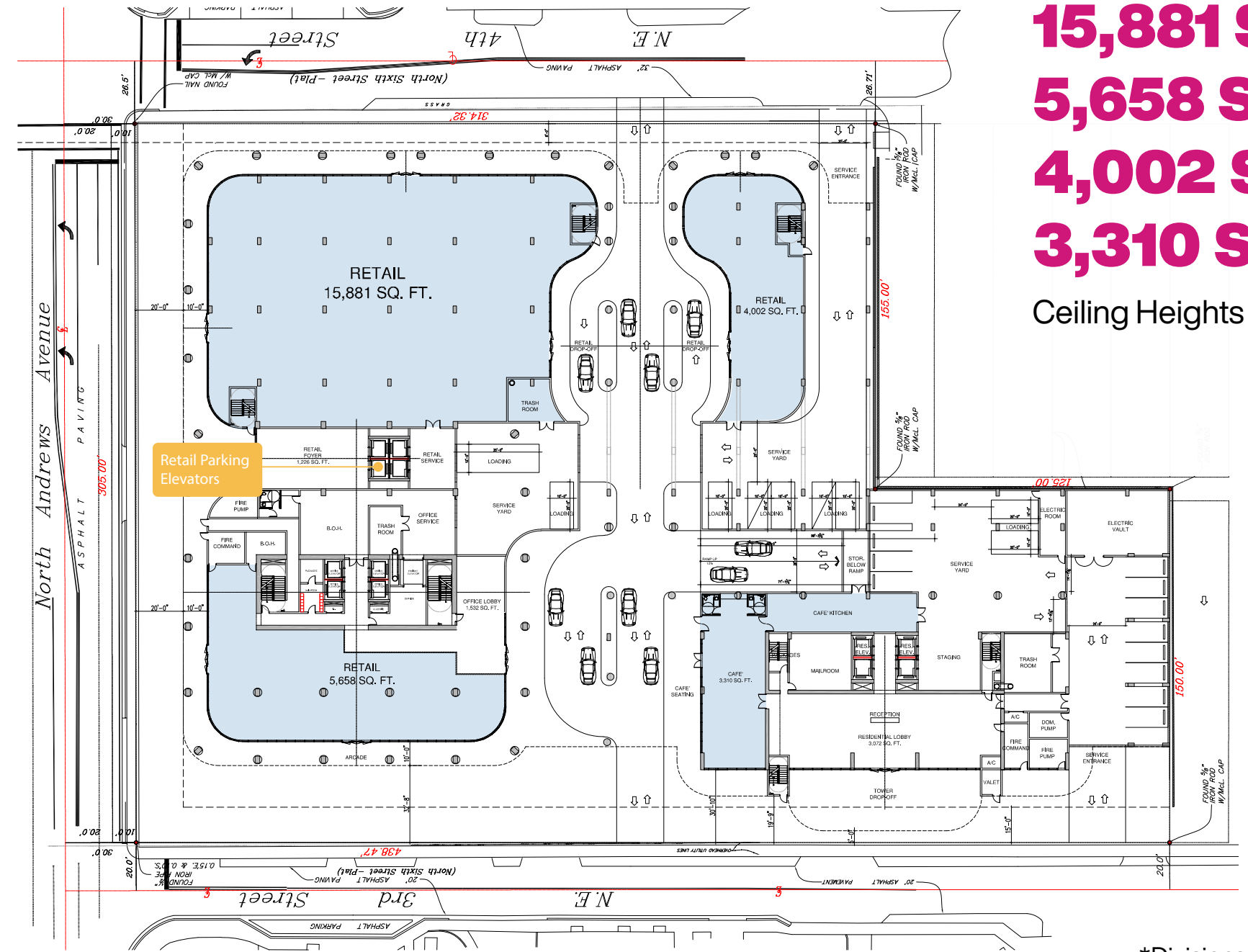
Ceiling Heights 18'6"  
Outdoor - Up to 8,280 SF

## LEVEL 4

- 9,671 SF

Ceiling Heights 18'6"  
Outdoor - Up to 9,846 SF

## GROUND FLOOR

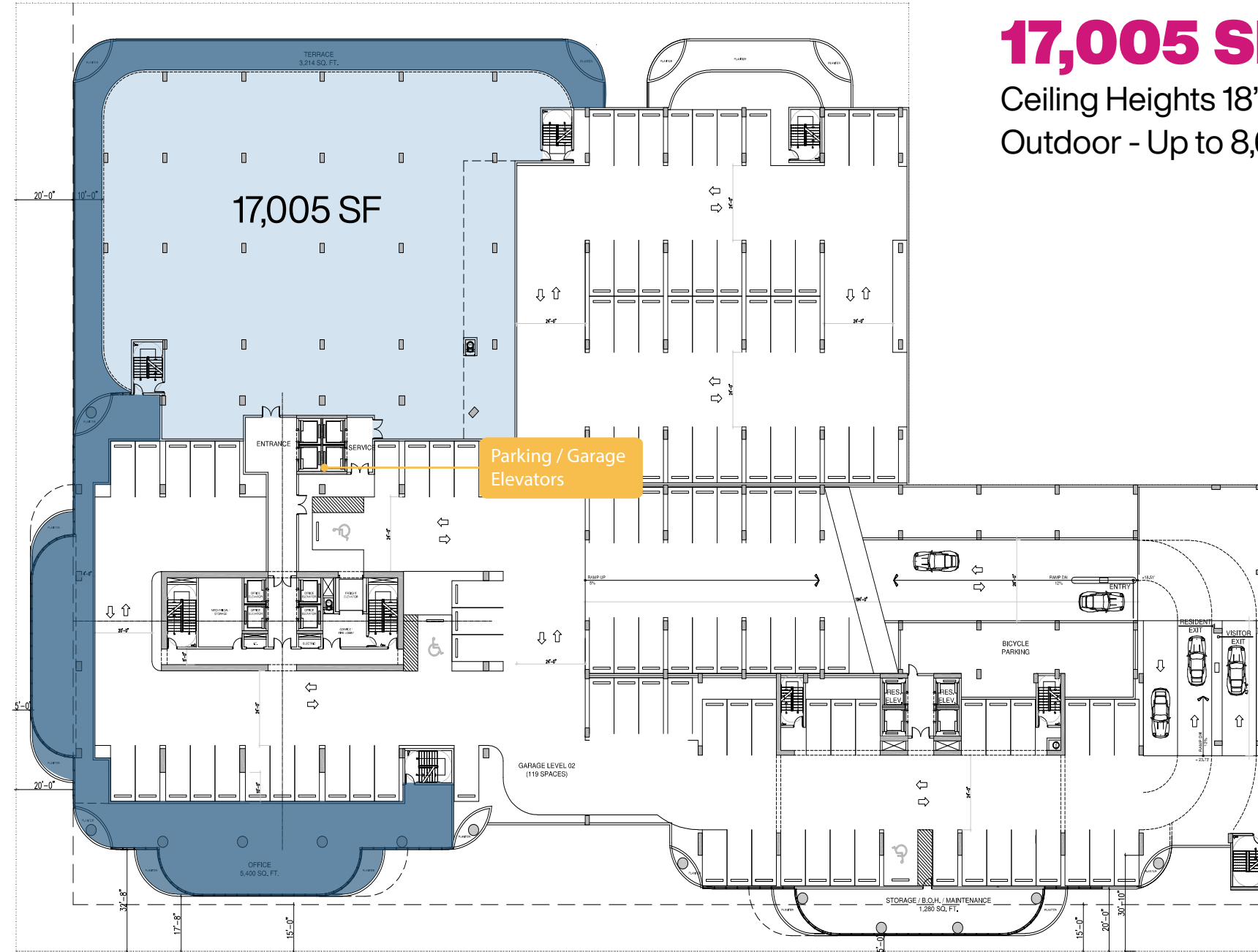


**15,881 SF**  
**5,658 SF**  
**4,002 SF**  
**3,310 SF**  
Ceiling Heights 24'

\*Divisions Possible

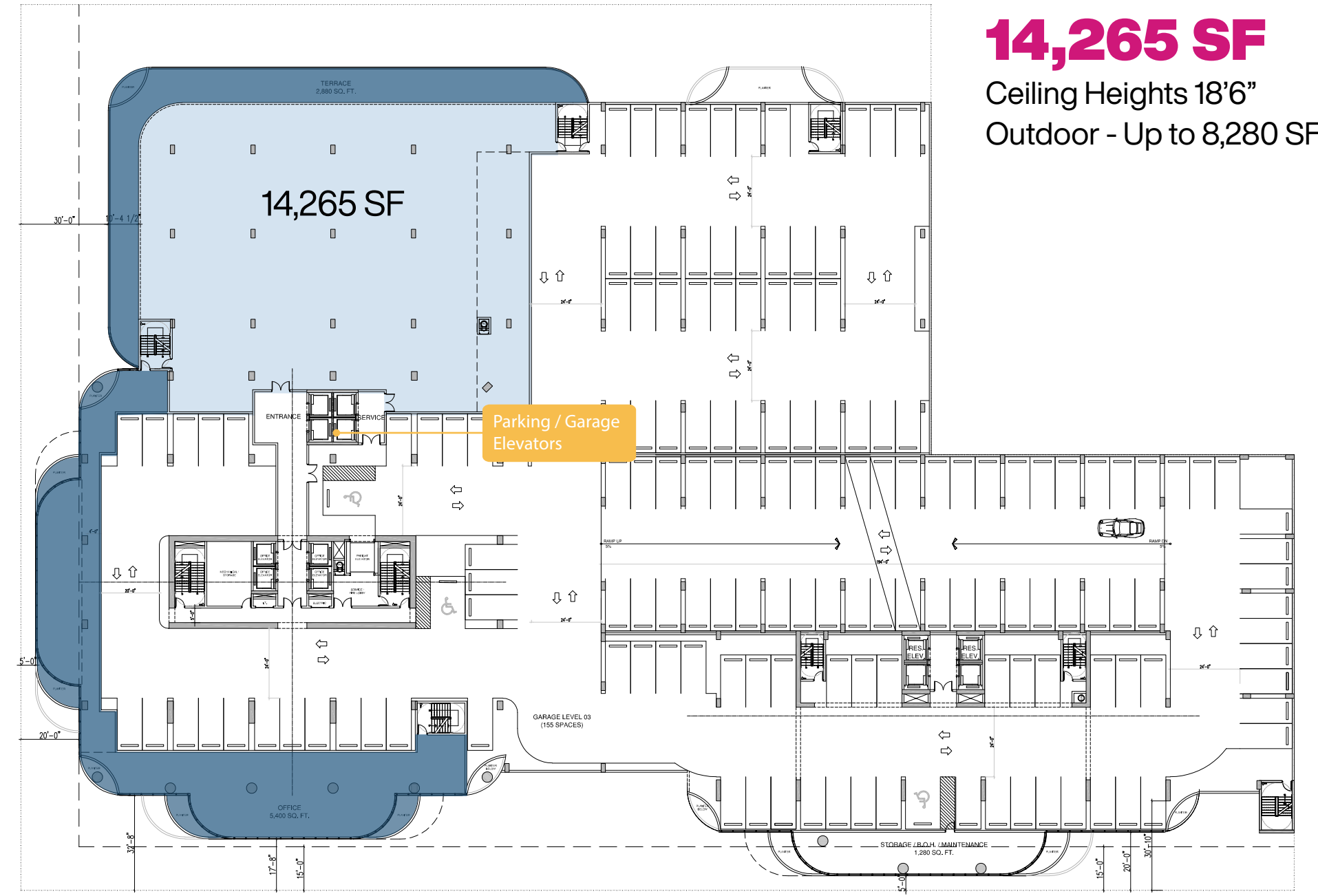


## LEVEL 2



**17,005 SF**  
Ceiling Heights 18'6"  
Outdoor - Up to 8,614 SF

## LEVEL 3



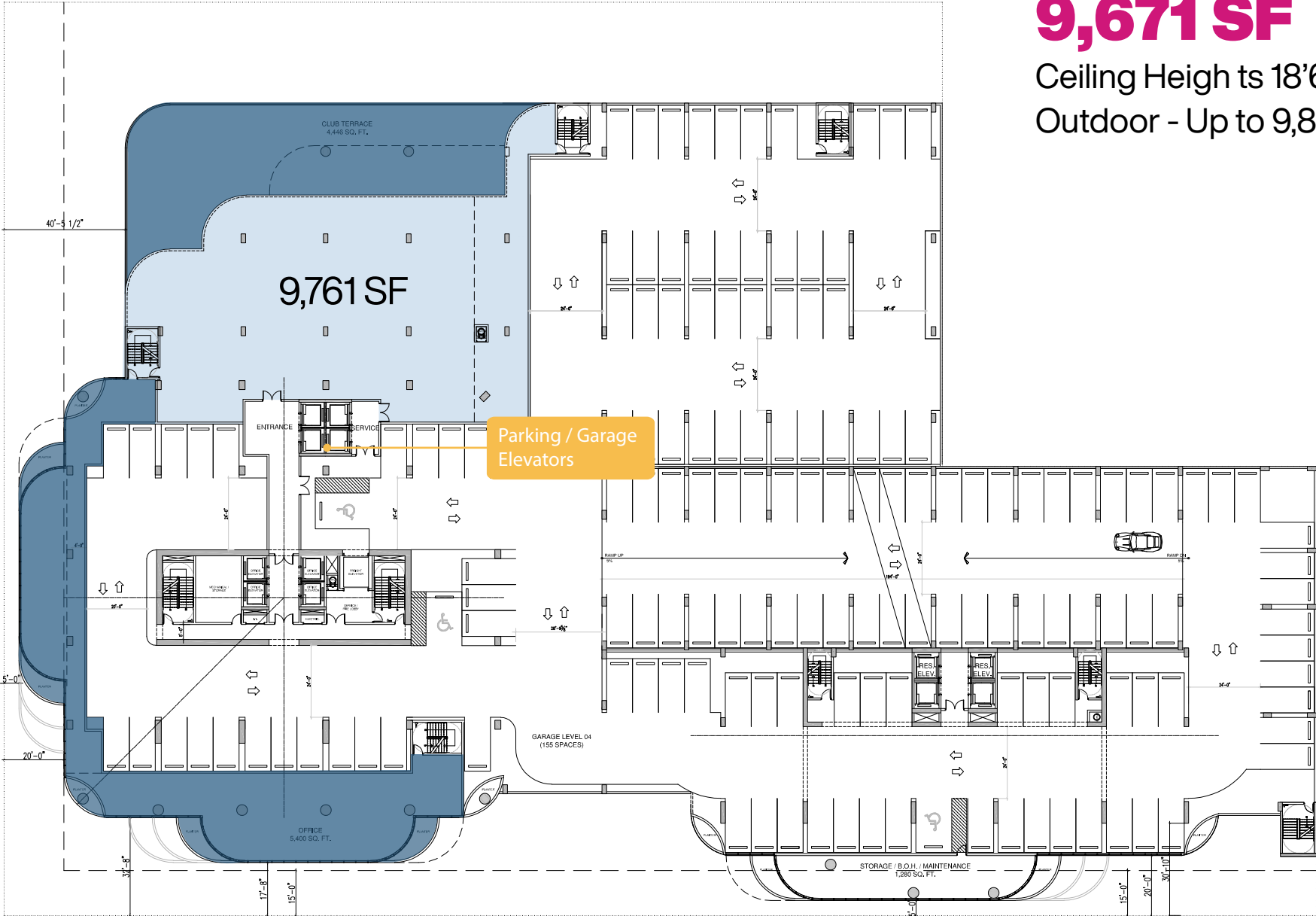
**14,265 SF**  
Ceiling Heights 18'6"  
Outdoor - Up to 8,280 SF



# LEVEL 4

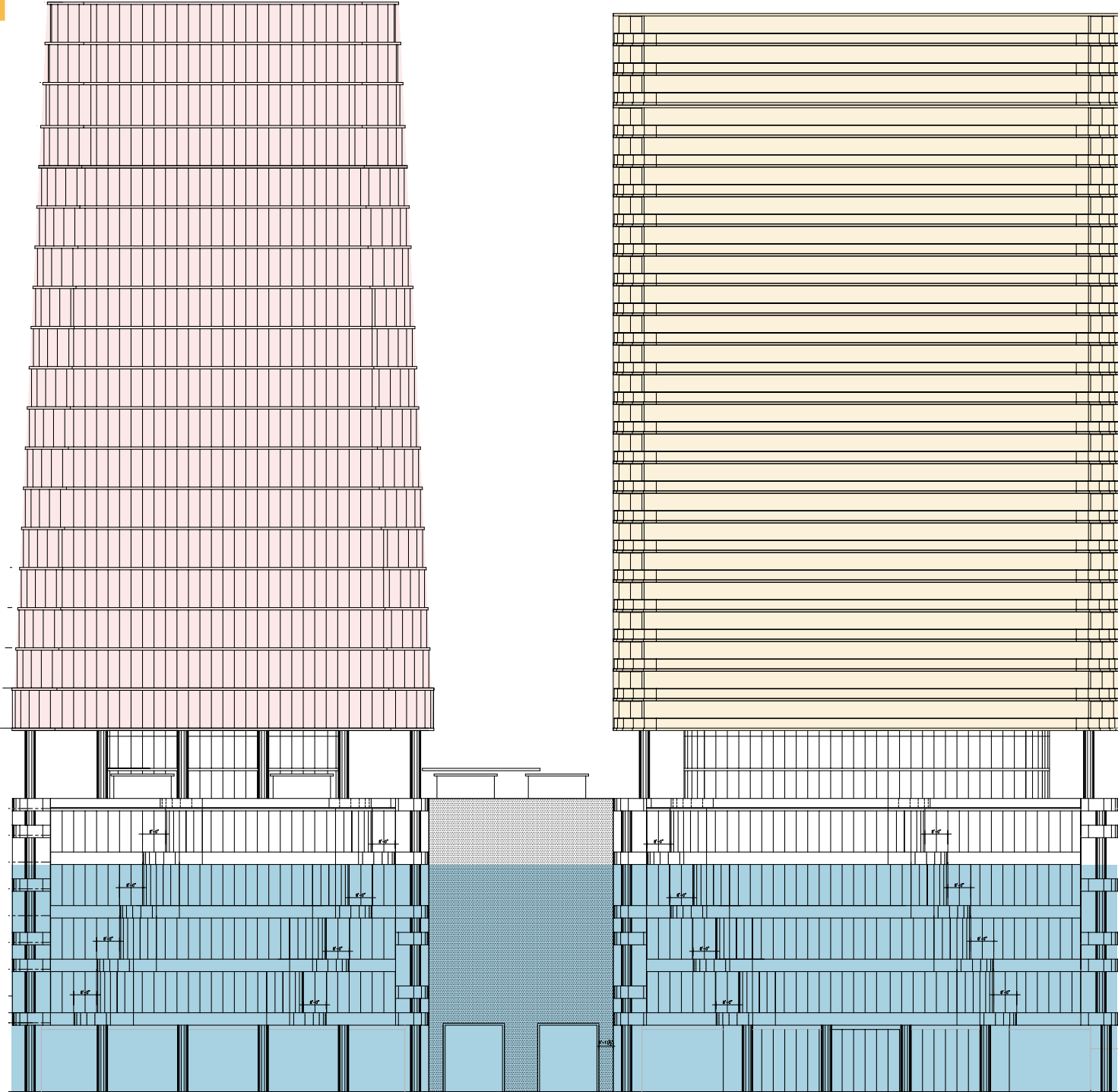
## 9,671 SF

Ceiling Heights 18'6"  
Outdoor - Up to 9,846 SF



# BUILDING STACK

- RESIDENTIAL UNITS
- OFFICE
- RETAIL





# office buildings

300 N Andrews Avenue Fort Lauderdale, FL 33301







Conceptual Rendering

Zach Winkler  
+ 1 305 704 1333  
zach.winkler@am.jll.com  
[us.jll.com/retail](http://us.jll.com/retail)

Jonathan Rosen  
+ 1 305 728 7391  
jonathan.rosen@am.jll.com

Lee Koniver  
+ 1 305 704 1404  
lee.koniver@am.jll.com