

For Sale

2117 Turnersville Road, Buda, TX 78610

±70 acres



Ideal for large users

Two plats connecting to major arterials totaling 69.54 acres

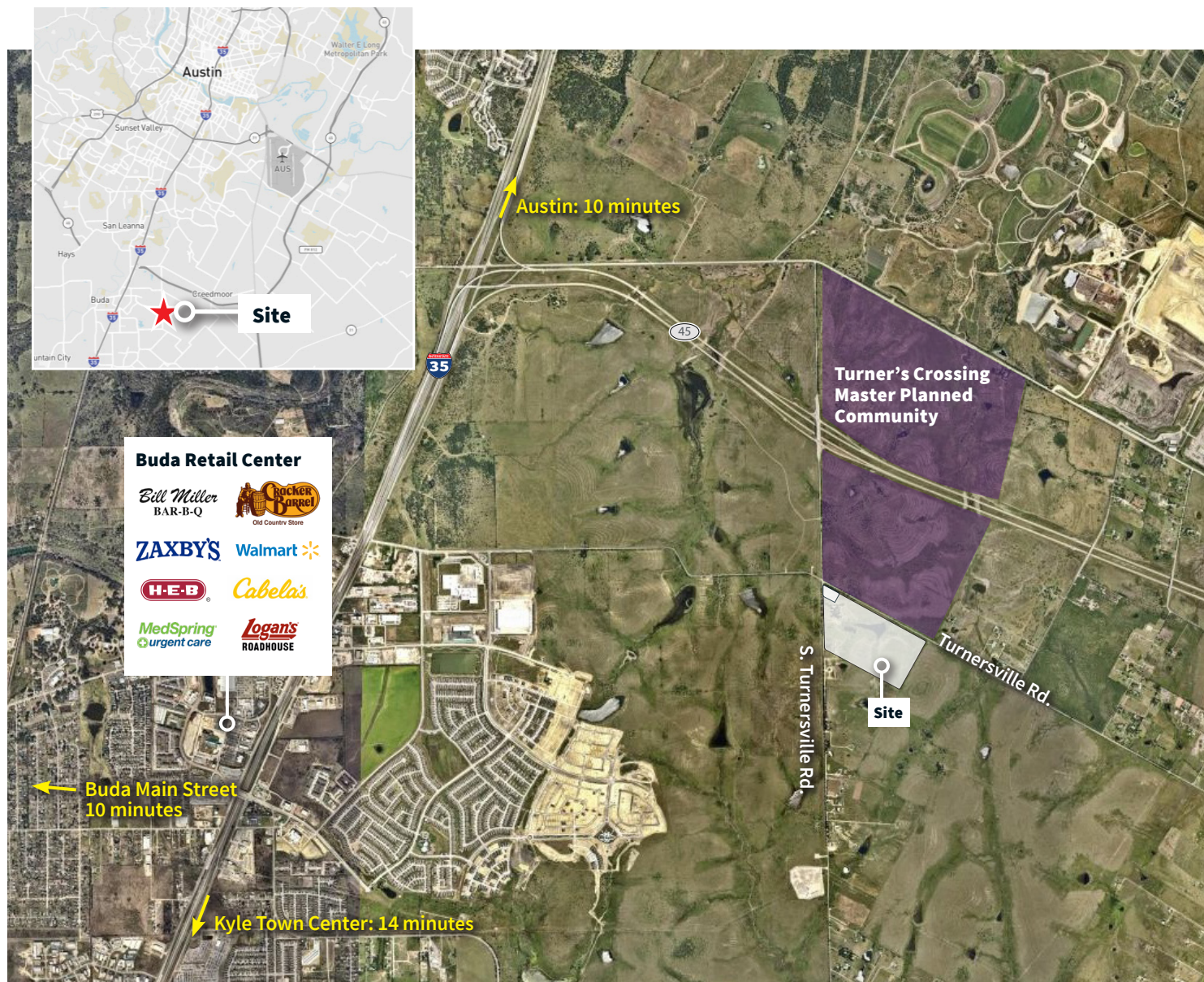
PROPERTY HIGHLIGHTS

- Submit Offers
- Parcels are situated in high-growth area with very few restrictions or zoning
- Warehouse, distribution, light manufacturing and associated showroom / office uses
- Adjacent to Turner's Crossing Master Planned Community developed by Meritage Homes
- Within proximity to the Buda Town Center, Kyle Town Center, San Marcos Outlets, Amazon Fulfillment Center, Texas State University
- 15 miles south of Downtown Austin
- 70 miles north of San Antonio

PROPERTY FEATURES

- **Gross Land Area:** ±70 acres
- **Retail:** Hard corner of Turnersville Rd & S. Turnersville Rd
- **Water:** Sunfield MUD #3
- **Electric:** Pedernales Electric Cooperative (PEC)
- **School District:** Hays CISD

For Sale



For more information, contact:

Ace Schlameus

+1 512 225 2709

ace.schlameus@am.jll.com

Zane Cole

+1 512 225 2708

zane.cole@am.jll.com