



# 218-220 N NORTHWEST HWY

NWC NORTHWEST HWY & HICKS PL | PALATINE, IL 60067

<b>SIZE</b>	3,233 SF
<b>LAND SITE</b>	Approx. 20,000 SF
<b>ASKING RENT</b>	Upon Request
<b>POSSESSION</b>	Immediate

## 3,233 SF MEDTAIL DEVELOPMENT SITE AVAILABLE ALONG NORTHWEST HIGHWAY IN PLAINFIELD, IL

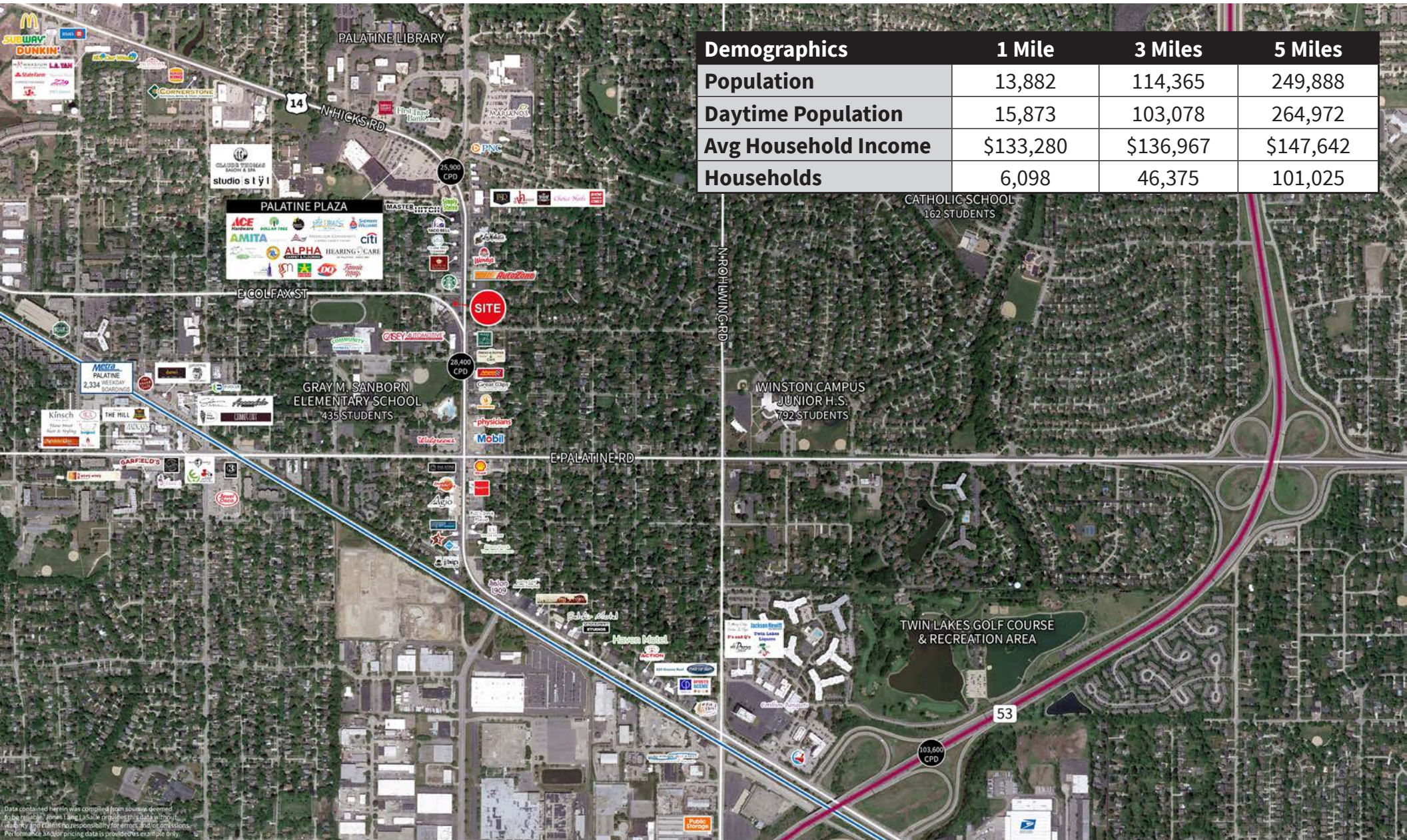
- Highly visible corner location with over 28,400 vehicles per day with parking and incredible signage opportunities
- Located at signalized intersection of Northwest Highway (Hicks) and N. Hicks Place
- Building can be retrofitted to accommodate your newest prototype
- Excellent for a quick casual restaurant, medical office, animal hospital and many other uses

### AREA RETAILERS



# 218-220 N NORTHWEST HWY

PALATINE TRADE AREA



Data contained herein was compiled from sources deemed to be reliable. JLL and its affiliates assume no responsibility for errors and/or omissions. Performance and pricing data is provided as an example only.

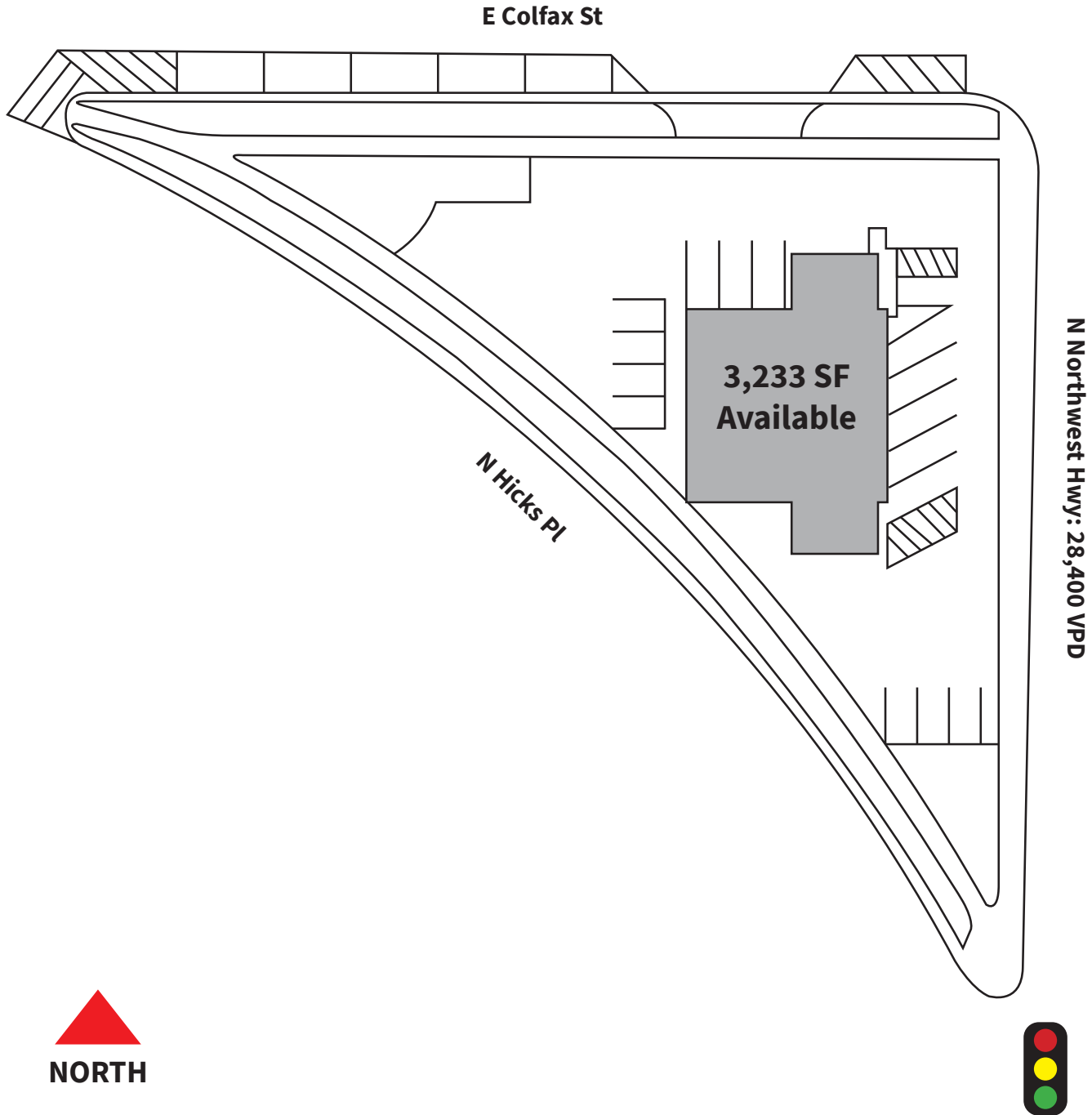
# 218-220 N NORTHWEST HWY

PALATINE TRADE AREA



# 218-220 N NORTHWEST HWY

SITE PLAN



**Steve Schwartz**  
Senior Vice President  
+312 228 2157  
steve.schwartz@am.jll.com

**Courtney Rouleau**  
Vice President  
+312 228 3431  
courtney.rouleau@am.jll.com

