

For Lease

20 University Road | Cambridge, MA



Large Block Availability in Heart of Harvard Square
UP TO **32,849 SF** OF VERTICALLY CONTIGUOUS SPACE

Charles Square



AVAILABLE SPACE

Floors can be connected with an internal staircase and customized to meet Tenant's specific needs

20 University Road is a 110,000 SF office building located in the heart of Harvard Square with excellent views of the Charles River. The building is adjacent to the Charles hotel and shopping mall, three restaurants, and has a large outdoor courtyard.

Harvard Square is one of Boston's most iconic and historic areas and is the perfect location for tenants looking to retain and recruit the area's top tech and biotech talent.

The building is in close proximity to the Harvard Square Red-Line MBTA Station, Harvard Yard, as well as numerous world class retail, restaurant, fitness, and hotel options for tenants to enjoy.



Direct access to Harvard Square MBTA station and public transportation



On-site 4 star hotel with 294 rooms

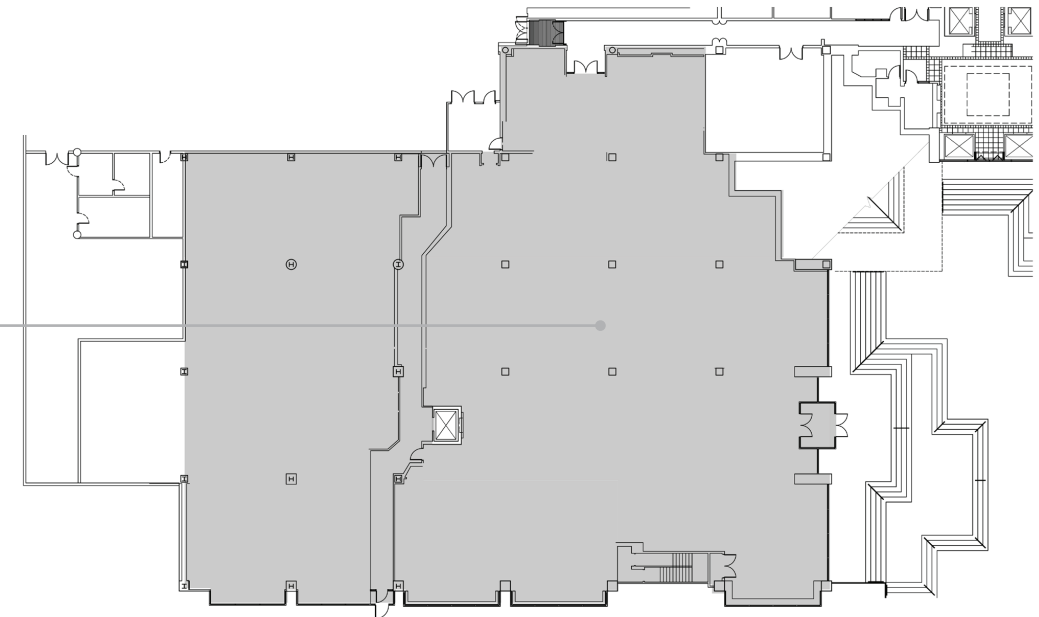


PureBarre and CorePower Yoga are minutes away

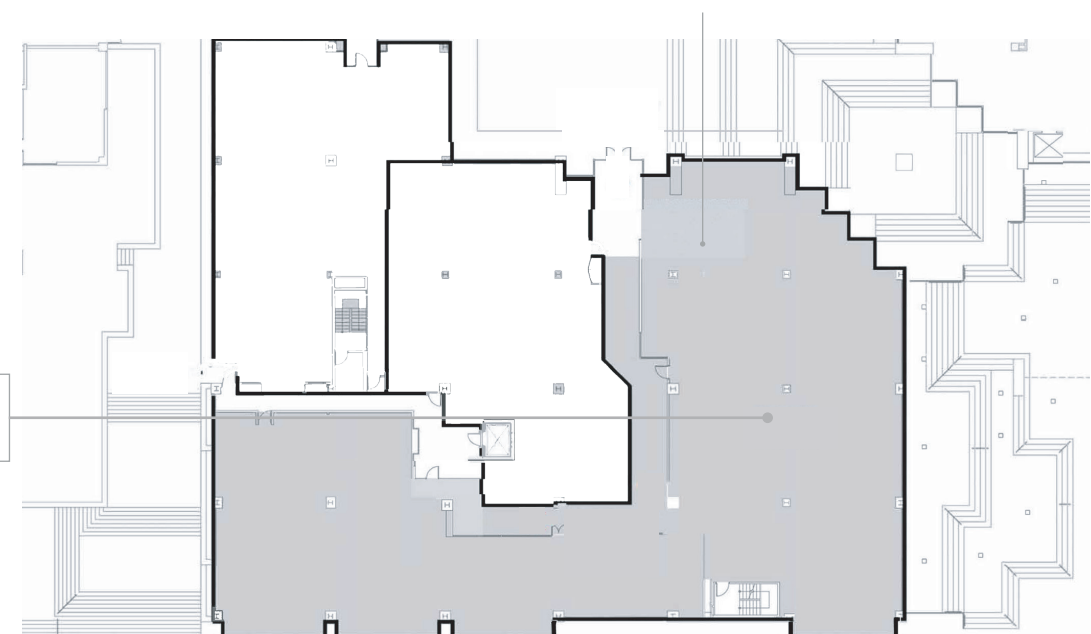


Surrounded by numerous neighborhood culinary offerings

1st Floor
21,715 SF



2nd Floor
11,134 SF



BUILDING SPECS



Year Built Built in 1985



Size 110,000 RSF



Availability Up to 32,849 SF
Floor 1 21,715 SF
Floor 2 11,134 SF

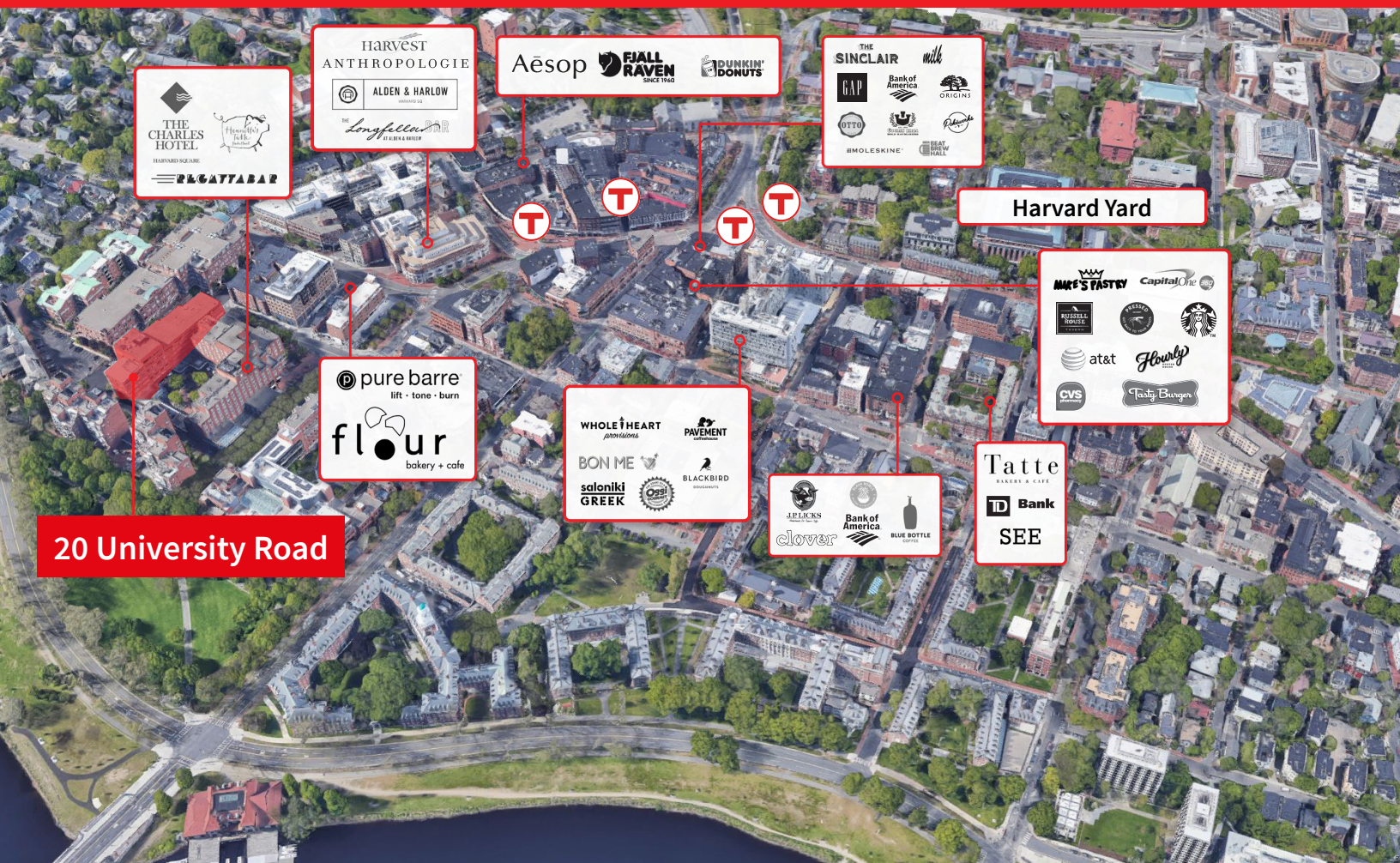


Floors Seven (7)



Parking Minimum of 1.0 / 1,000 SF leased and up to 3.0/1,000 SF leased in covered garage on the property





WITHIN 0.5 MILES OF 20 UNIVERSITY ROAD



68

Retail Stores



121

Restaurant/Bars



6

Gyms



12

Hotels



4

Parking Garages

For more information, please contact:

Pete Bekarian
617 531 4195
Peter.Bekarian@am.jll.com

Maggie Dore
617 531 4196
Maggie.Dore@am.jll.com

