



# For Sale

14368 Manchester Road  
Ballwin, MO 63011

**±4,800 SF office building**

## Property Highlights

- Owner/user or investment property
- ± 4,800 SF office building
- ±0.13 acre lot
- 100% leased
- 3/1,000 parking ratio
- Located off of Manchester Road just 0.3 miles west of MO-141
- **Asking Price: \$629,000.00**



## Area Amenities



Shopping



Dining



Highly populated

## Contact

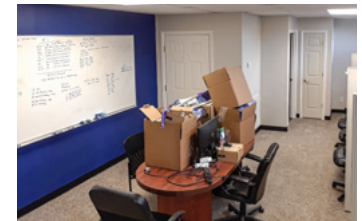
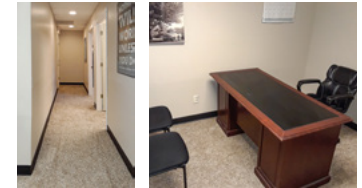
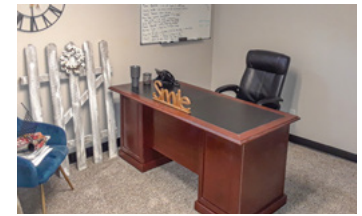
**Stephen Lordo**

Associate

+1 314 338 2089

[stephen.lordo@am.jll.com](mailto:stephen.lordo@am.jll.com)

# Location



# Contact

**Stephen Lordo**

Associate

+1 314 338 2089

stephen.lordo@am.jll.com

[jll.com/st-louis](http://jll.com/st-louis) +1 314 338 2080

**Jones Lang LaSalle Americas, Inc., a licensed real estate broker across the US**

**DISCLAIMER** Although information has been obtained from sources deemed reliable, neither Owner nor JLL makes any guarantees, warranties or representations, express or implied, as to the completeness or accuracy as to the information contained herein. Any projections, opinions, assumptions or estimates used are for example only. There may be differences between projected and actual results, and those differences may be material. The Property may be withdrawn without notice. Neither Owner nor JLL accepts any liability for any loss or damage suffered by any party resulting from reliance on this information. If the recipient of this information has signed a confidentiality agreement regarding this matter, this information is subject to the terms of that agreement. ©2021. Jones Lang LaSalle IP, Inc. All rights reserved.

