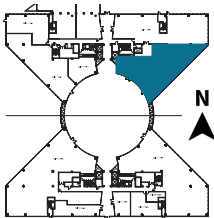
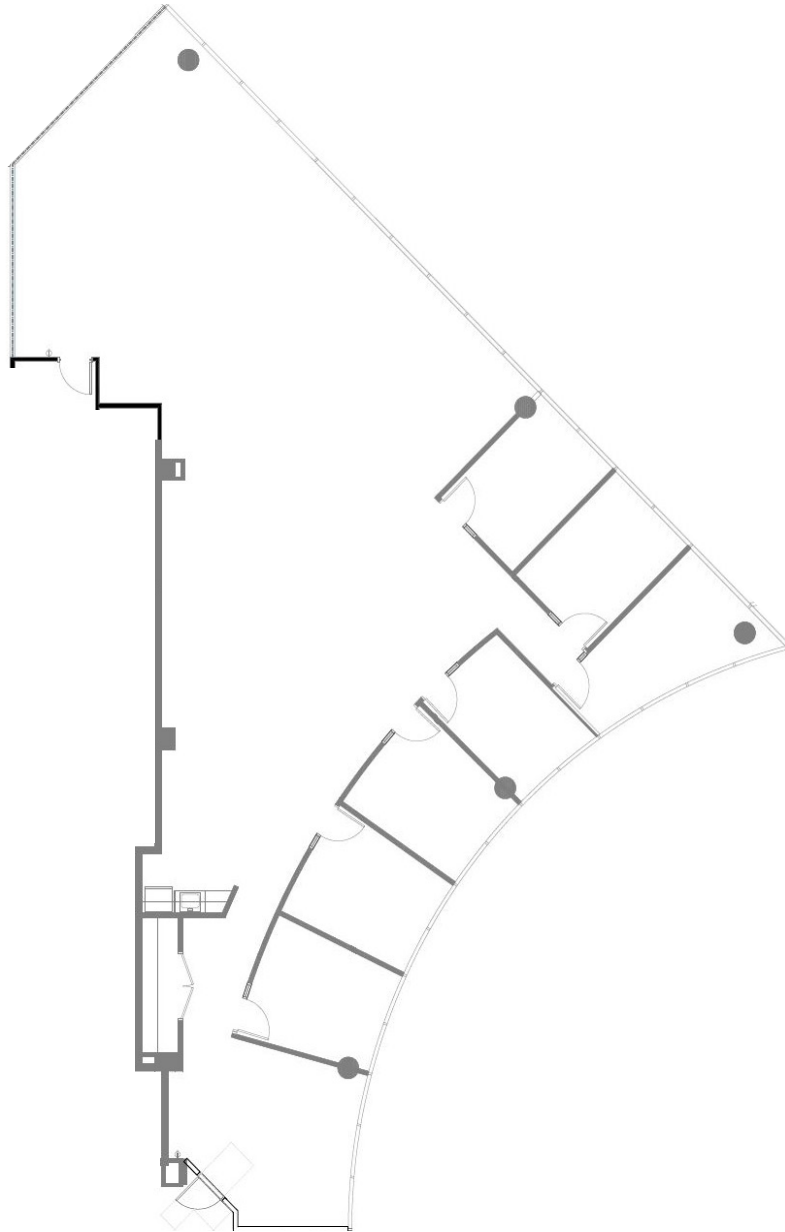


## SUITE 320N - 4,339 RSF

PRESIDENTIAL  
CIRCLE



© 2020 Jones Lang LaSalle Brokerage, Inc., a licensed real estate broker. All rights reserved. All information contained herein is from sources deemed reliable; however, no representation or warranty is made to the accuracy thereof.

**Iconic Class A  
office building**

# FOR LEASE



**Elizabeth Jimenez**

+1 954 233 3441

[elizabeth.jimenez@am.jll.com](mailto:elizabeth.jimenez@am.jll.com)

**Steven Hurwitz**

+1 305 960 8441

[steven.hurwitz@am.jll.com](mailto:steven.hurwitz@am.jll.com)

**Doug Okun**

+1 305 960 8444

[doug.okun@am.jll.com](mailto:doug.okun@am.jll.com)

**[4000hollywoodblvd.com](http://4000hollywoodblvd.com)**