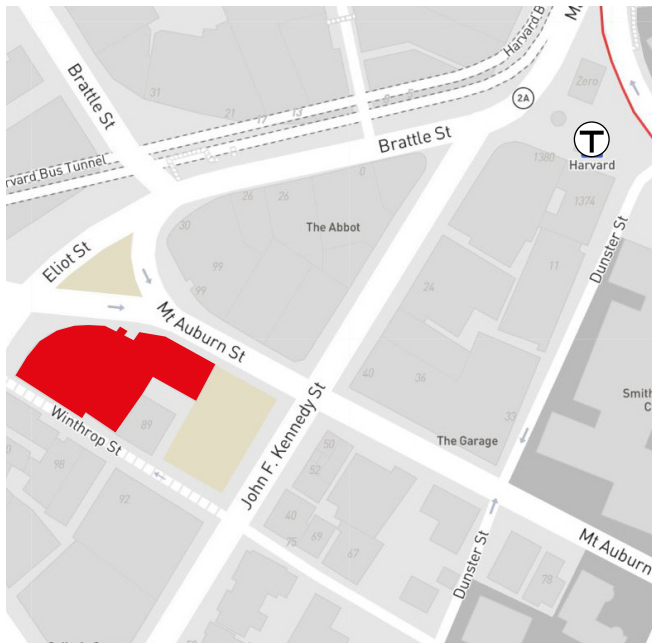




FOR LEASE

104 Mount Auburn Street, Cambridge



Office space available in Harvard Square 389 - 7,166 SF available

JLL is pleased to present 389 SF - 7,166 SF of office space for lease at 104 Mount Auburn Street. The property is located in the middle of Harvard Square, steps from numerous amenities such as restaurants, shops, hotels and public transportation. The 2nd floor availability includes a private entrance off of Winthrop Street.

- **Building Size:** 50,000 SF
- **Year Built:** 1984
- **Floors:** 5
- **Availability:**
 - 2nd Floor: 1,926 SF
 - 3rd Floor: 7,166 SF (available 7/1/2022)
 - 5th Floor: 389 SF
- **Available:** Immediately
- **Amenities:** Located in the heart of Harvard Square

For more information, please contact:

John Osten
617 531 4107

John.Osten@am.jll.com

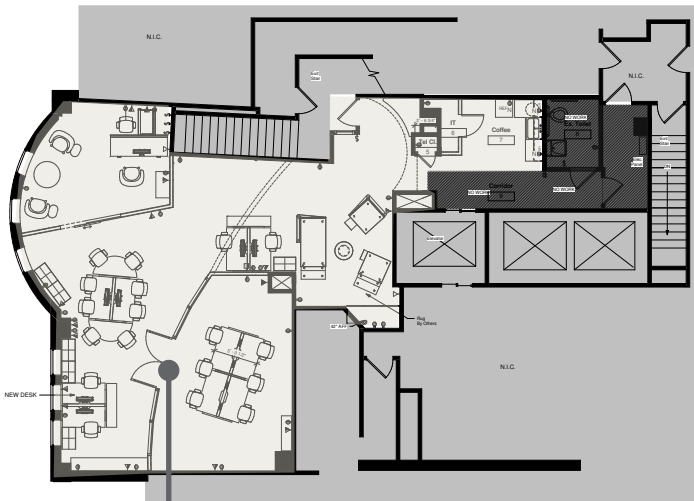
Maggie Dore
617 531 4196

Maggie.Dore@am.jll.com

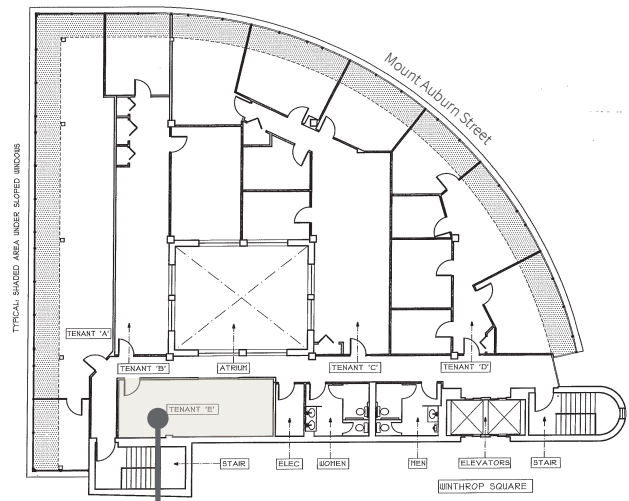


104 Mount Auburn Street

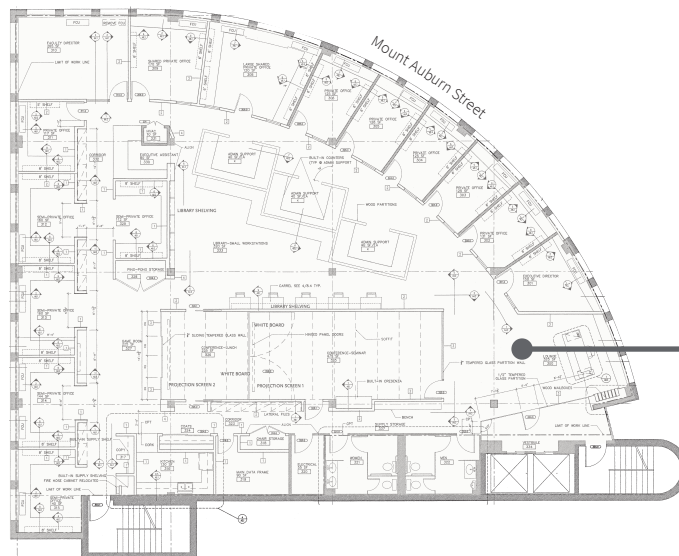
AVAILABLE IMMEDIATELY



Floor 2
1,926 SF



Floor 5
389 SF



Floor 3
7,166 SF
AVAILABLE 7/1/22

For more information, please contact:

John Osten

617 531 4107

John.Osten@am.jll.com

Maggie Dore

617 531 4196

Maggie.Dore@am.jll.com

