



121 Champion Way | Canonsburg, PA



Move-in ready suites



Ample free parking



Prominent tenant roster



Excellent location: Easy highway access to I-79



7,300 – 22, 500 RSF available

- 15 minutes to Tanger Outlets
- 25 min to downtown Pittsburgh
- 26 min to Pittsburgh International Airport



Updated common areas



Borders Southpointe Golf Club



Features a concrete outdoor courtyard and seating area with views of Southpointe Golf Course



Abundant
natural
light



Scenic
location

Jesse Ainsman
jesse.ainsman@am.jll.com
+1 412 208 8414

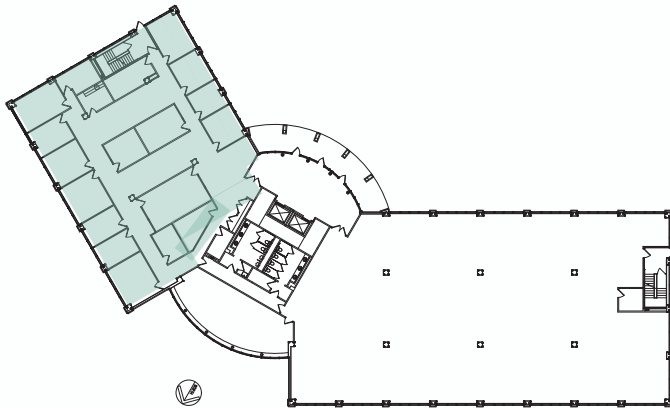
Jason Stewart
jason.stewart@am.jll.com
+1 412 208 1402



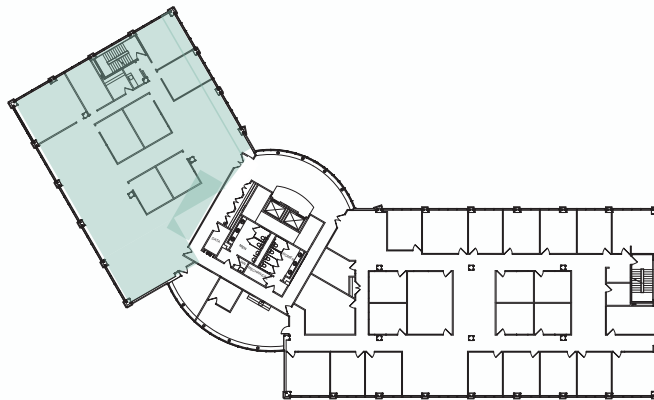
Available Floorplates



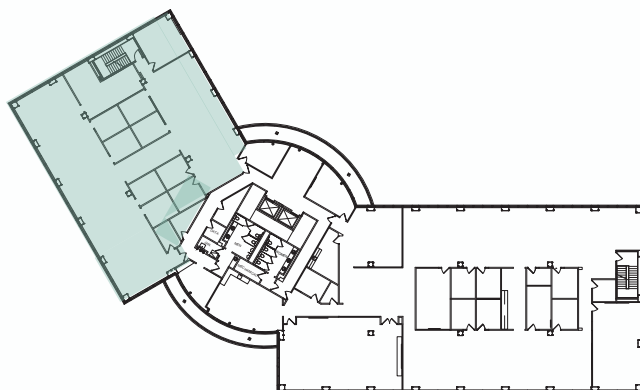
Flexible floorplates are available



First floor
7,339 RSF



Second floor
7,556 RSF



Third floor
7,565 RSF



**Set up a tour at
121 Champion Way today**

Jesse Ainsman
jesse.ainsman@am.jll.com
+1 412 208 8414

Jason Stewart
jason.stewart@am.jll.com
+1 412 208 1402



Although information has been obtained from sources deemed reliable, neither Owner nor JLL makes any guarantees, warranties or representations, express or implied, as to the completeness or accuracy as to the information contained herein. Any projections, opinions, assumptions or estimates used are for example only. There may be differences between projected and actual results, and those differences may be material. The Property may be withdrawn without notice. Neither Owner nor JLL accepts any liability for any loss or damage suffered by any party resulting from reliance on this information. If the recipient of this information has signed a confidentiality agreement regarding this matter, this information is subject to the terms of that agreement. ©2020. Jones Lang LaSalle IP, Inc. All rights reserved.