



870 Central Park Avenue

Scarsdale, NY
Retail Opportunity



Former Walgreens Available for Sublease

Space

Ground Floor: 8,840 sf

Possession

Immediate

Frontage

138 ft

Term

Through 10/31/2035

Asking Rent

\$385,000 per annum gross

Former Walgreens store #12093

Neighbors



JO-ANN'S
fabric and craft stores



RED LOBSTER
FRESH FISH • LIVE LOBSTER



Demographics

Radius	'19 Pop	Total HH	Avg. HHI
1 Mile	12,659	5,210	\$224,220
3 Mile	110,120	41,110	\$198,694
5 Mile	316,456	121,967	\$165,753

Michael Riley

+1 212 812 5901

Michael.Riley@jll.com

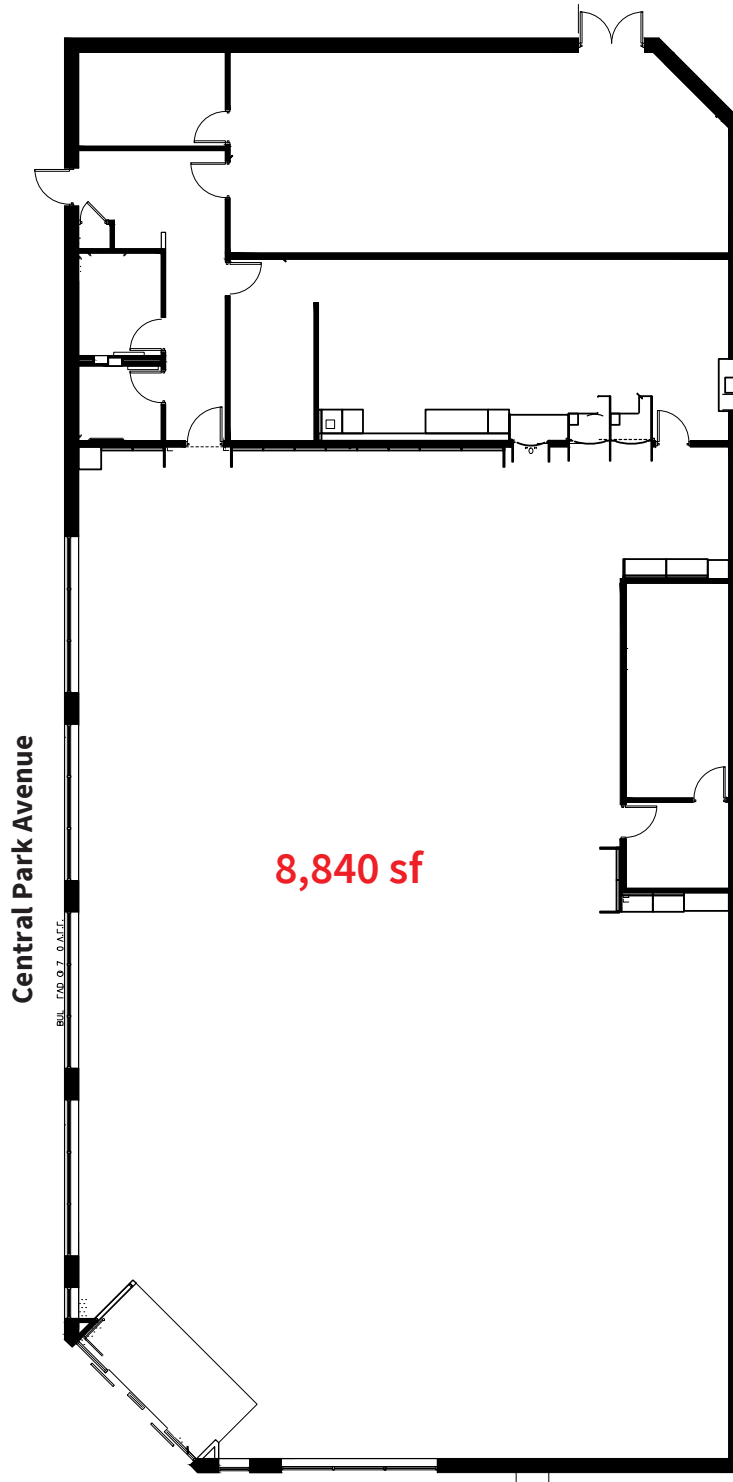
Patrick A. Smith

+1 212 812 5888

PatrickA.Smith@jll.com

870 Central Park Avenue

Ground Floor



Jones Lang LaSalle Brokerage, Inc. | 330 Madison Avenue New York, NY 10017

DISCLAIMER

Although information has been obtained from sources deemed reliable, neither Owner nor JLL makes any guarantees, warranties or representations, express or implied, as to the completeness or accuracy as to the information contained herein. Any projections, opinions, assumptions or estimates used are for example only. There may be differences between projected and actual results, and those differences may be material. The Property may be withdrawn without notice. Neither Owner nor JLL accepts any liability for any loss or damage suffered by any party resulting from reliance on this information. If the recipient of this information has signed a confidentiality agreement regarding this matter, this information is subject to the terms of that agreement. ©2022 Jones Lang LaSalle IP, Inc. All rights reserved.