

1130 MARKET STREET

LIVE. WORK. PLAY



RETAIL SPACE FOR LEASE



THE NEIGHBORHOOD

LIVE
WORK
PLAY

The Mid Market neighborhood has quickly established itself as San Francisco's beating cultural heart.

Civic institutions surround a vibrant city scape of arts burgeoning with entertainment, hospitality and dining options. A growing neighborhood characterized by San Francisco's most exciting commercial office and residential projects, historic growth has produced a thriving twenty-four-hour neighborhood.

Best-in-class restaurants, nightlife and hotel options located proximate to Market Street provide accessibility to downtown and surrounding neighborhoods. Mid Market is a fabulous place to live, to work and to play.



THE PEOPLE

YOUNG URBAN ENTREPRENEURS

Not just a neighborhood full of daytime technology employees, Mid Market is more than ever characterized by residential growth.

Over 55 residential projects situated within a ten-minute walk of 1130 Market Street provide a dense customer base for neighborhood retailers. Approximately 50,000 residents reside within several blocks to drive pedestrian activity and retail sales morning, noon and night seven days a week.

46,118

Total population

84,762

Daytime population

10,245

Hotel rooms
(Total existing and under construction)

\$2.8K

Average restaurant spend annually

\$70.8M

Total restaurant spend annually

Demographics
(Ten-minute walking distance)

Source: Esri, 2018

Existing Multifamily

- 1 66 9th Street
- 2 380-390 Clementina Street
- 3 21 Columbia Square
- 4 201-229 Eddy Street
- 5 249 Eddy Street
- 6 711 Eddy Street
- 7 121 Golden Gate Avenue
- 8 260 Golden Gate Avenue
- 9 277 Golden Gate Avenue
- 10 1190 Howard Street
- 11 988-992 Howard Street
- 12 1000 Howard Street
- 13 1009 Howard Street
- 14 1180 Howard Street
- 15 225 Hyde Street
- 16 240 Jones Street
- 17 111-115 Jones Street
- 18 205 Jones Street
- 19 422 Larkin Street
- 20 500-510 Larkin Street
- 21 973 Market Street
- 22 1390 Market Street
- 23 54 Mcallister Street
- 24 250-260 McAllister Street
- 25 142-152 McAllister Street
- 26 250 Mcallister Street
- 27 1036 Mission Street
- 28 1188 Mission Street
- 29 1190 Mission Street
- 30 1321 Mission Street
- 31 1390 Mission Street
- 32 1401 Mission Street
- 33 474 Natoma Street
- 34 1 Polk Street
- 35 101-103 Polk Street
- 36 529 Stevenson Street
- 37 145 Taylor Street



- 38 430 Turk Street
- 39 270-272 Turk Street
- 40 275 Turk Street
- 41 318-320 Turk Street
- 42 351 Turk Street
- 43 471 Turk Street
- 44 33 8th Street
- 45 8 10th Street
- 46 455 Eddy Street
- 47 900 Folsom Street
- 48 923 Folsom Street
- 49 48 Golden Gate Avenue

- 50 1045 Mission Street
- 51 57 Taylor Street
- 52 201 Turk Street
- 53 100 Van Ness Avenue
- 54 150 Van Ness Avenue
- 55 55 9th Street

Multifamily Under Construction

- 1 1075 Market Street
- 2 1177 Market Street
- 3 1500 Mission Street
- 4 1066 Market Street

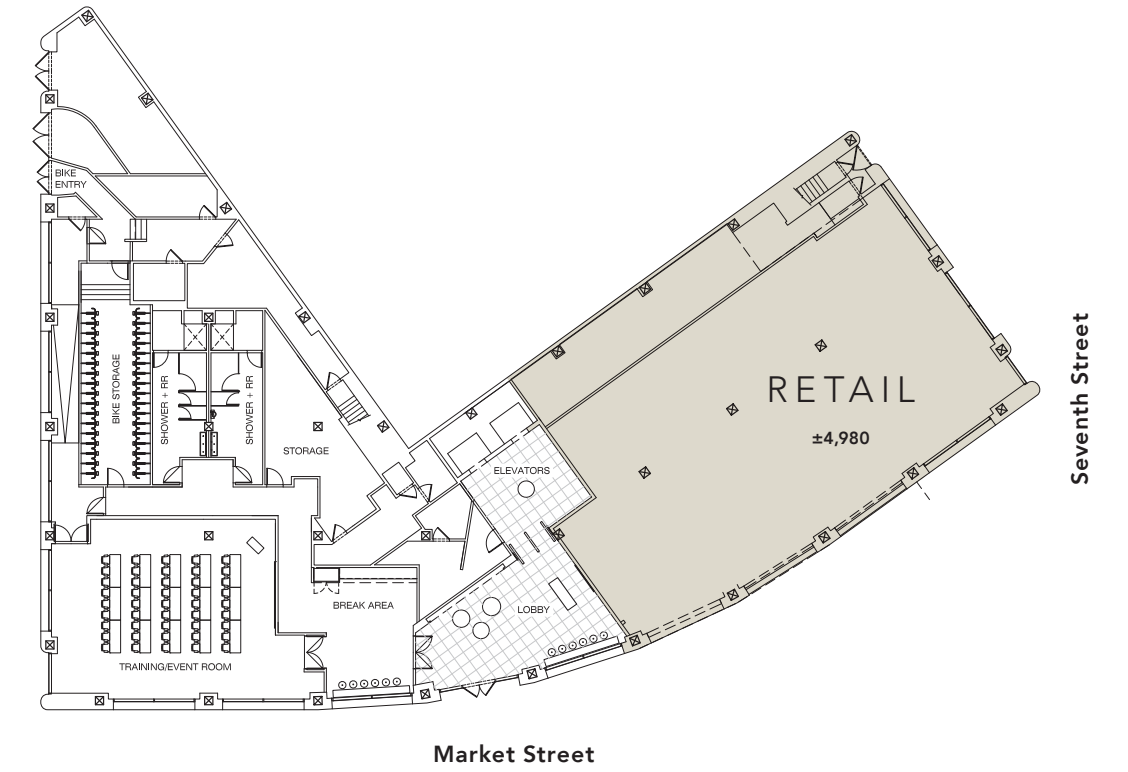
THE PREMISE

FEEL
GOOD
SPACE

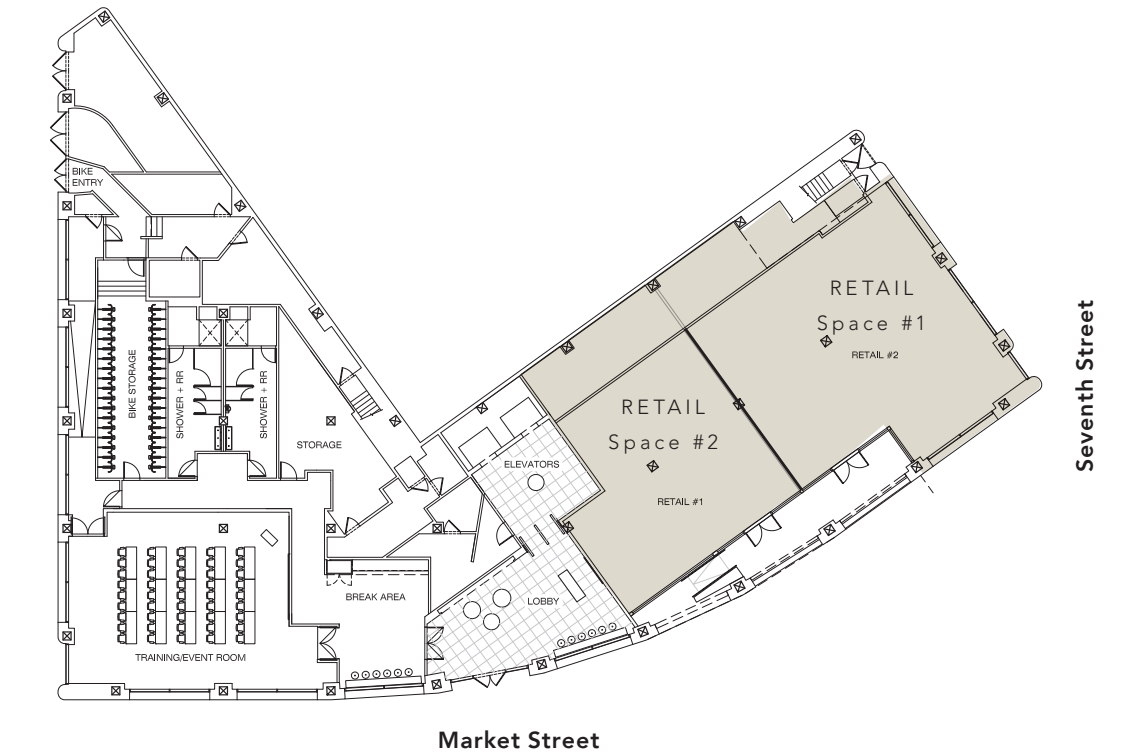
- **Double-height** arched windows provide **incredible natural light**
- Wonderful space volumes with ceiling heights of approximately **16'**
- Phenomenal street presence and **branding potential** with 80' of frontage
- **Outdoor patio** with potential for seating and activation
- **In-place** mechanical, electrical and plumbing infrastructure
- Space can be **easily demised** into multiple retail space



Single User Plan



Multiple User Plan





*Achieve
Ambitions*

Exclusively represented by:

BEN LAZZARESCHI

Executive Vice President
Retail Advisory Services
JLL

+1 415 228 3070

ben.lazzareschi@am.jll.com

License #01414579

jllretail.com

KEVIN KENNICK

Associate
Retail Advisory Services
JLL

+1 415 395 4991

kevin.kennick@am.jll.com