



For Sublease

23rd floor - 4,448 SF

- Term through 2/28/2027
- Exceptional views from the 23rd floor facing Market Street with corner exposure
- 10 private offices each with sidelights
- 2 conference rooms
- Bullpen area
- Kitchenette
- Furniture available
- Asking rate available upon request

1601 Market Street Philadelphia, PA

Anthony LiVecchi

+1 215 399 1817

anthony.livecchi@am.jll.com

Jones Lang LaSalle Brokerage, Inc.

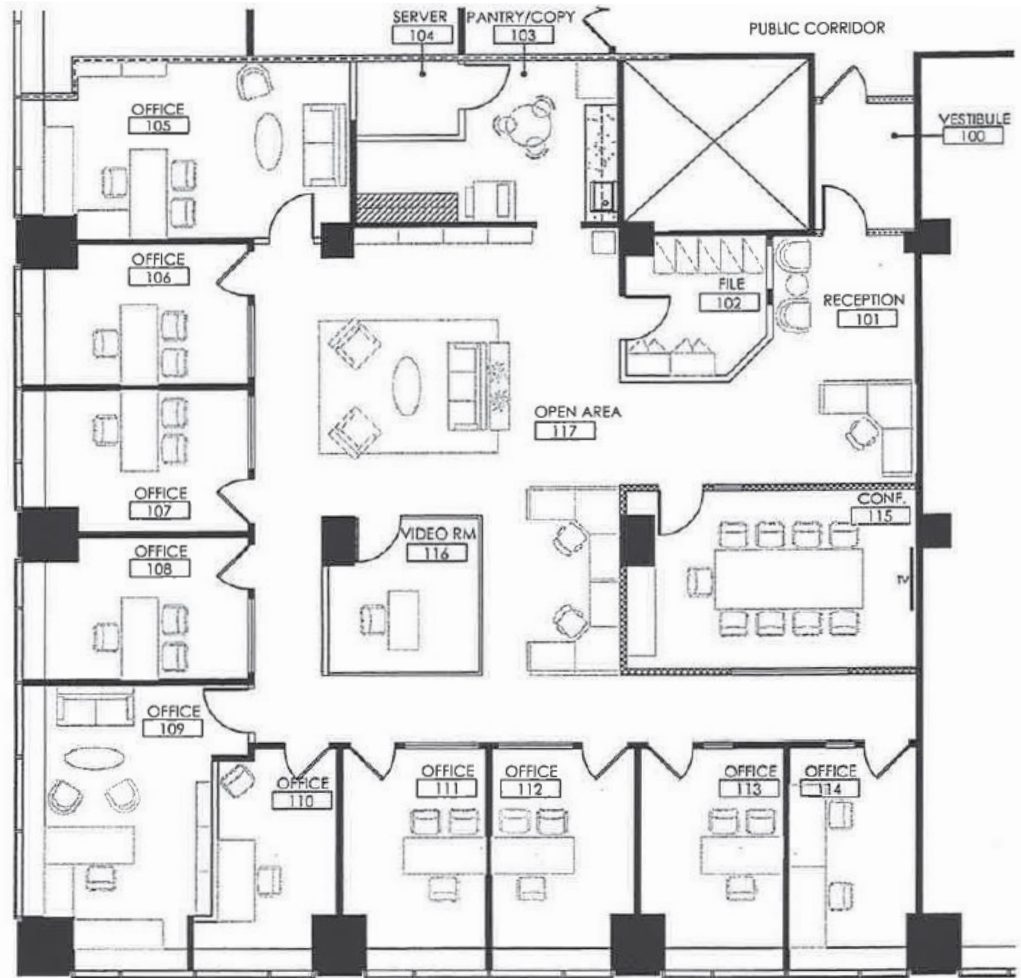
1650 Arch Street, Suite 2500

Philadelphia, PA 19103

+1 215 988 5500



Corner exposure with Market Street views



Sleek and modern lobby renovation



DISCLAIMER

Although information has been obtained from sources deemed reliable, neither Owner nor JLL makes any guarantees, warranties or representations, express or implied, as to the completeness or accuracy as to the information contained herein. Any projections, opinions, assumptions or estimates used are for example only. There may be differences between projected and actual results, and those differences may be material. The Property may be withdrawn without notice. Neither Owner nor JLL accepts any liability for any loss or damage suffered by any party resulting from reliance on this information. If the recipient of this information has signed a confidentiality agreement regarding this matter, this information is subject to the terms of that agreement. ©2021. Jones Lang LaSalle IP, Inc. All rights reserved.

