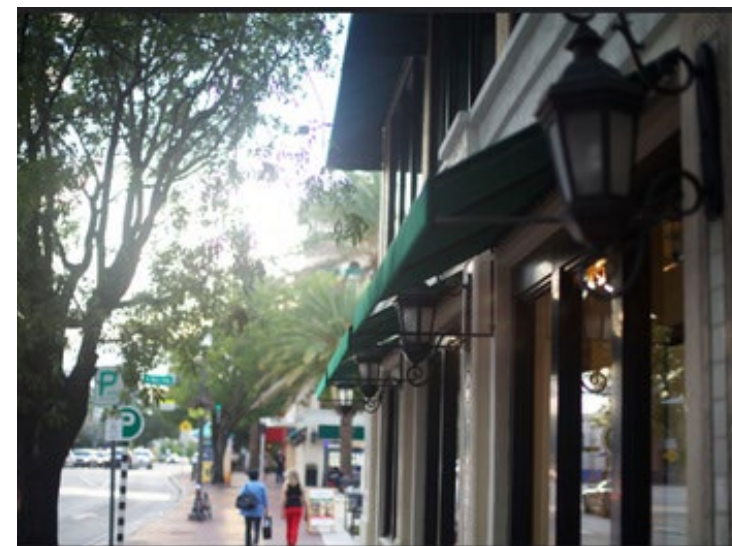




For Lease

3250 Mary Street
Coconut Grove, FL 33131



Continental Plaza

Continental Plaza is a +80,000 square foot, five-story office building, offering on-site security and a secure parking garage. Continental Plaza distinctly features a red brick facade with a newly renovated lobby.

Features

- ±1,018 - 1,505 rsf office suites
- Located in the heart of Coconut Grove
- Over 50 restaurants and stores within walking distance
- Covered parking available
- New ownership and management
- Parking ratio 2.5 / 1,000
- On-site security



For more information, contact:

Steven Hurwitz
+1 (305) 960-8441
steven.hurwitz@am.jll.com

Doug Okun
+1 (305) 960-8444
doug.okun@am.jll.com

For Lease

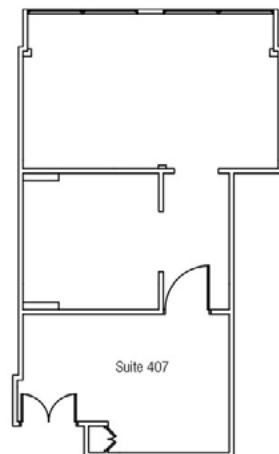
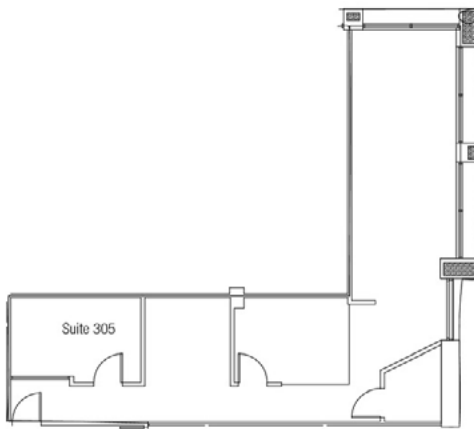
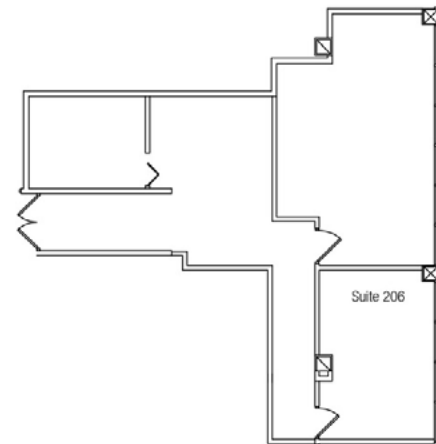
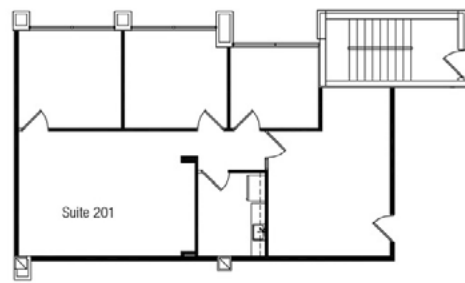
Floor plans

Available spaces

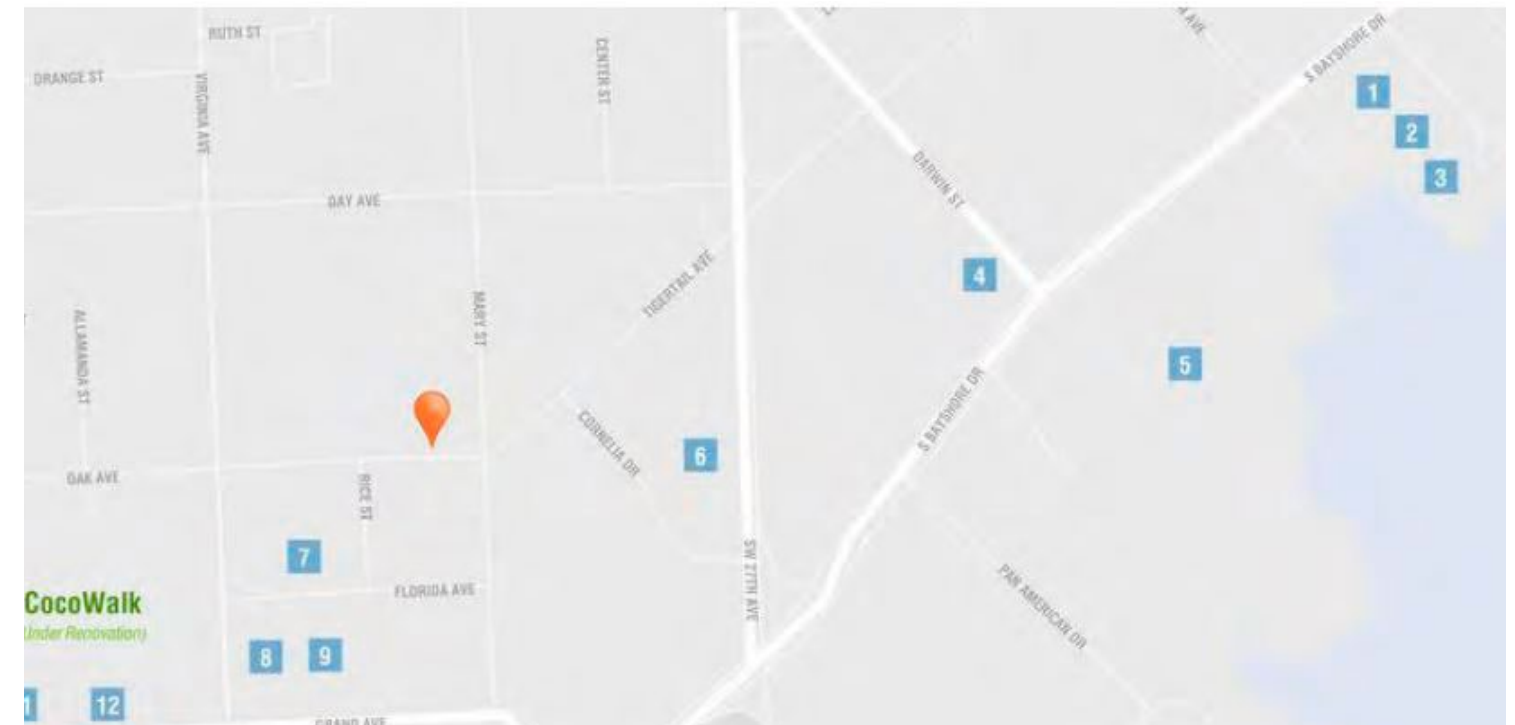
Suite 100	3,356 SF
Suite 204	1,210 SF
Suite 206	1,036 SF

Available spaces

Suite 302	5,907 SF
Suite 305	1,134 SF
Suite 407	1,018 SF



Location overview



- | | | | |
|----------------------------------|------------------------|--------------------------------|--------------------------------------|
| 1. Monty's | 7. Bombay Darbar | 14. Strada in the Grove | 21. Peacock Garden Bistro |
| 2. Starbucks | 8. Mayfair Hotel & Spa | 15. Greenstreet Cafe | 22. The Mutiny Hotel |
| 3. Sushi Maki | 9. The Spillover | 16. Akashi Japanese Restaurant | 23. Panorama Restaurant & Sky Lounge |
| 4. Courtyard Miami Coconut Grove | 10. Sapore di Mare | 17. Le Bouchon | 24. Peacock Garden Café |
| 5. The Fresh Market | 11. Jaguar | 18. Panther Coffee | |
| 6. Ritz Carlton | 12. Gap | 19. Harry's Pizzeria | |
| | 13. Farinelli | 20. Sonesta Hotel | |