

# 7920 NORFOLK AVENUE BETHESDA, MD



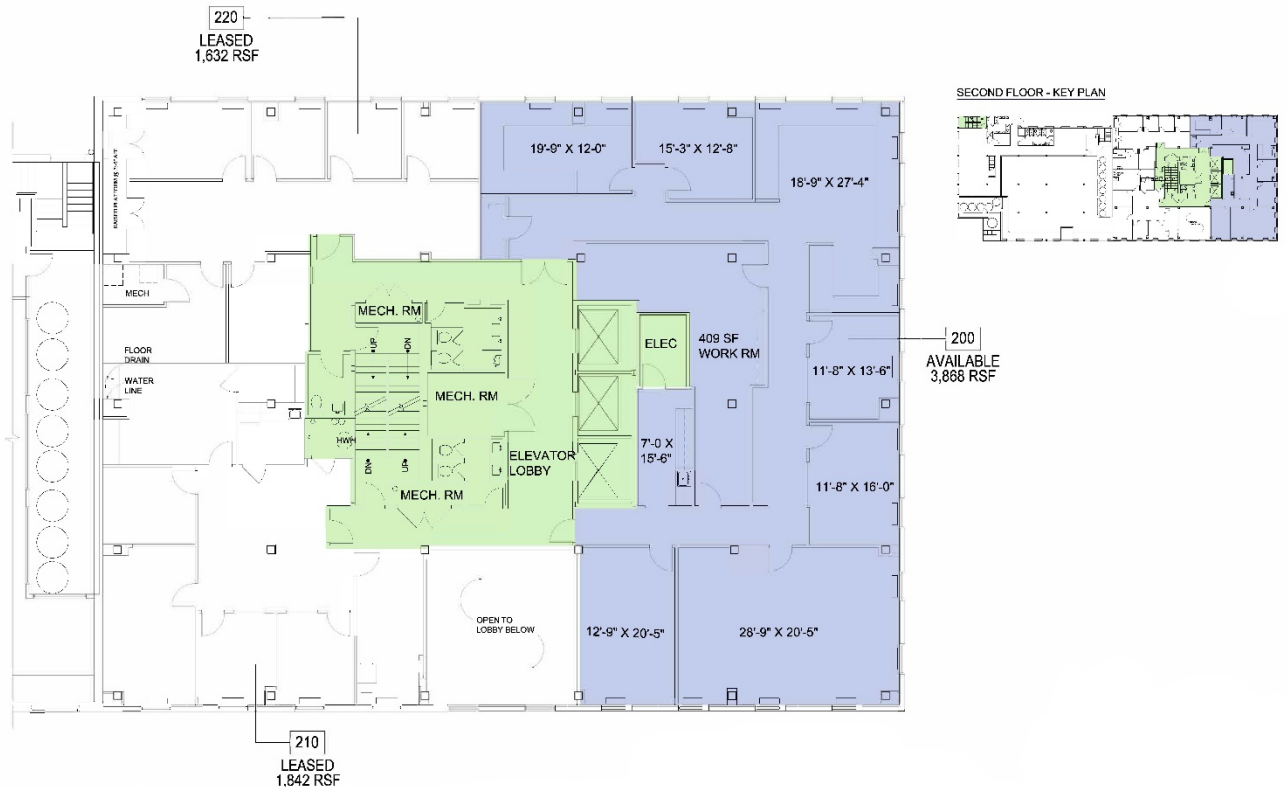
- BRAND NEW RENOVATED LOBBY AND EXTERIOR FACADE
- FULL FLOOR OPPORTUNITY ON 3RD FLOOR AT 16,979 SF
- 3,868 SF SUITE ON THE 2ND FLOOR
- 1,965 SF ON THE 11TH FLOOR
- LOCATED IN THE HEART OF WOODMONT TRIANGLE
- SURROUNDED BY AMENITIES AS WELL AS ON-SITE RESTAURANT
- SHORT, EASY WALK TO THE BETHESDA METRO

## RENOVATIONS COMPLETE – BUILDING FAÇADE & LOBBY

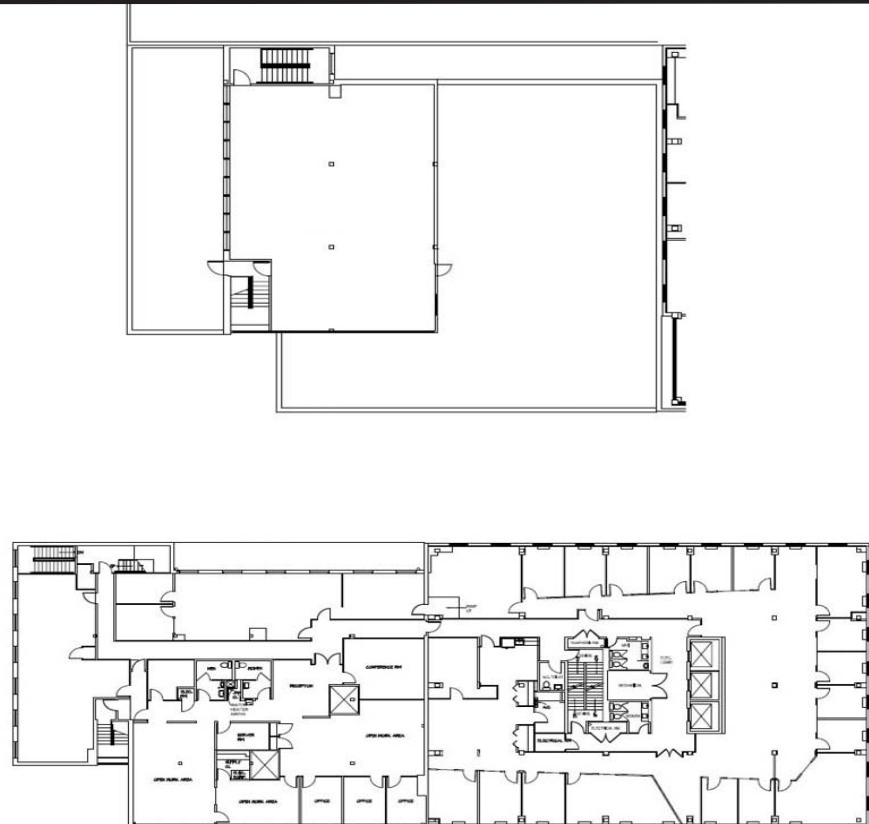


# FLOORPLANS

**Second Floor**  
3,868 sf.



**Third Floor**  
16,979 sf.



# FLOORPLANS

## Eleventh Floor 1,965 sf.







**FOR MORE INFORMATION, PLEASE CONTACT:**

Amanda Davis  
301.287.9970  
[amanda.davis@am.jll.com](mailto:amanda.davis@am.jll.com)

Danny Sheridan  
301.287.9922  
[danny.sheridan@am.jll.com](mailto:danny.sheridan@am.jll.com)

J. Andrew Masters  
301.287.3262  
[andrew.masters@am.jll.com](mailto:andrew.masters@am.jll.com)

Patrick Hall  
301.287.9931  
[patrick.hall@am.jll.com](mailto:patrick.hall@am.jll.com)

