



391 5th Avenue

A Retail Opportunity

Park Slope, Brooklyn, NY
Between 6th and 7th Streets

Space

Ground Floor	1,250 sf
Lower Level	400 sf

Frontage

18 ft on 5th Avenue

Ceiling Height

Ground Floor	11 ft
Lower Level	7 ft

Possession

Immediate

Comments

- Newly renovated space
- High foot-traffic along Park Slopes Restaurant Row
- High visibility glass frontage with multiple entrances
- Rapid residential and office growth
- Within an 8-minute walk of New York Presbyterian Hospital
- Within a 5-minute walk of 4th/9th Street and Smith-9th Street Stations servicing the lines

F G D N R W

Ryan P. Condren

+1 212 220 4117
ryan.condren@am.jll.com

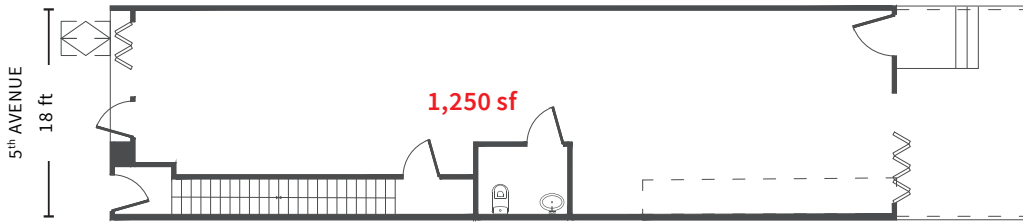
George Danut

+1 212 220 4121
george.danut@am.jll.com

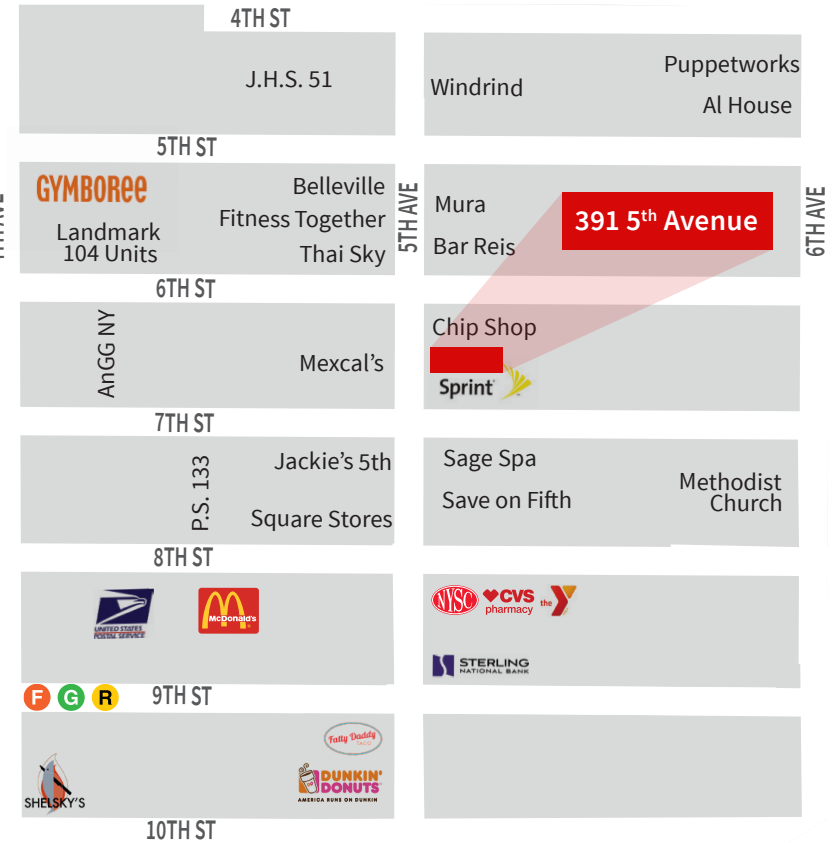
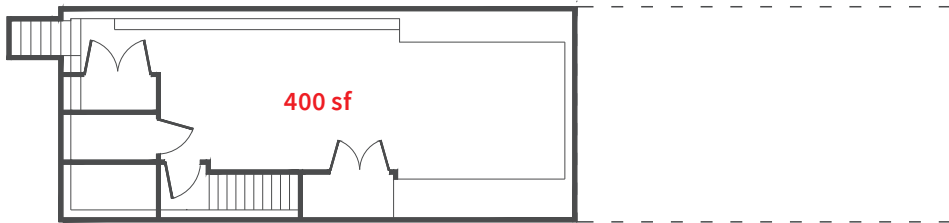


391 5th Avenue

Ground Floor



Lower Level



5.8M+
annual subway
ridership



1.6M
annual spending
within 1-mile radius



119K
household income
within 1-mile radius



5K+
total businesses
within 1-mile radius

Neighboring Tenants



HALYARDS



Jones Lang La Salle Brokerage, Inc. | 330 Madison Avenue New York, NY 10017
DISCLAIMER

Although information has been obtained from sources deemed reliable, neither Owner nor JLL makes any guarantees, warranties or representations, express or implied, as to the completeness or accuracy as to the information contained herein. Any projections, opinions, assumptions or estimates used are for example only. There may be differences between projected and actual results, and those differences may be material. The Property may be withdrawn without notice. Neither Owner nor JLL accepts any liability for any loss or damage suffered by any party resulting from reliance on this information. If the recipient of this information has signed a confidentiality agreement regarding this matter, this information is subject to the terms of that agreement. ©2019. Jones Lang LaSalle IP, Inc. All rights reserved.

