

Centre Square

1500 MARKET STREET

Philadelphia, PA

AVAILABILITIES

Mike Morrone

Executive Managing Director
+1 610 249 2266
mike.morrone@am.jll.com

Eric Berkowitz

Senior Associate
+1 610 416 2226
eric.berkowitz@am.jll.com

Alex Breitmayer

Executive Vice President
+ 1 215 399 1813
alex.breitmayer@am.jll.com

Jones Lang LaSalle Brokerage, Inc.

1650 Arch Street, Suite 2500
Philadelphia, PA 19103
+1 215 988 5500
jll.com/Philadelphia

Although information has been obtained from sources deemed reliable, neither Owner nor JLL makes any guarantees, warranties or representations, express or implied, as to the completeness or accuracy as to the information contained herein. Any projections, opinions, assumptions or estimates used are for example only. There maybe differences between projected and actual results, and those differences may be material. The Property may be withdrawn without notice. Neither Owner nor JLL accepts any liability for any loss or damage suffered by any party resulting from reliance on this information. If the recipient of this information has signed a confidentiality agreement regarding this matter, this information is subject to the terms of that agreement. ©2022. Jones Lang LaSalle Brokerage, Inc. All rights reserved.



1500 Market Street availabilities

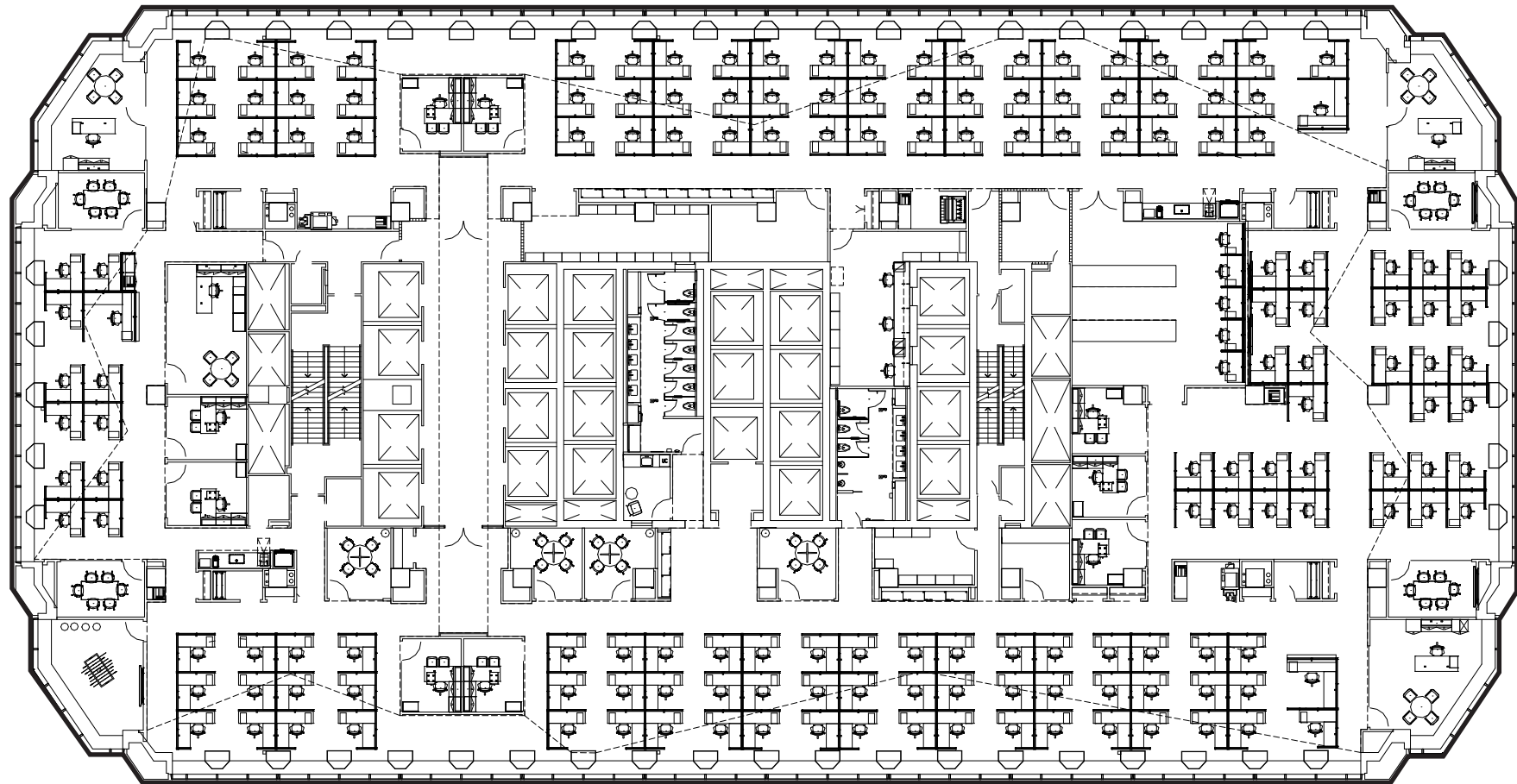
WEST TOWER FLOOR 15

Size: 28,368 RSF

Available: Immediate

Term: Through 8/31/2032

Demisable: No



1500 Market Street availabilities

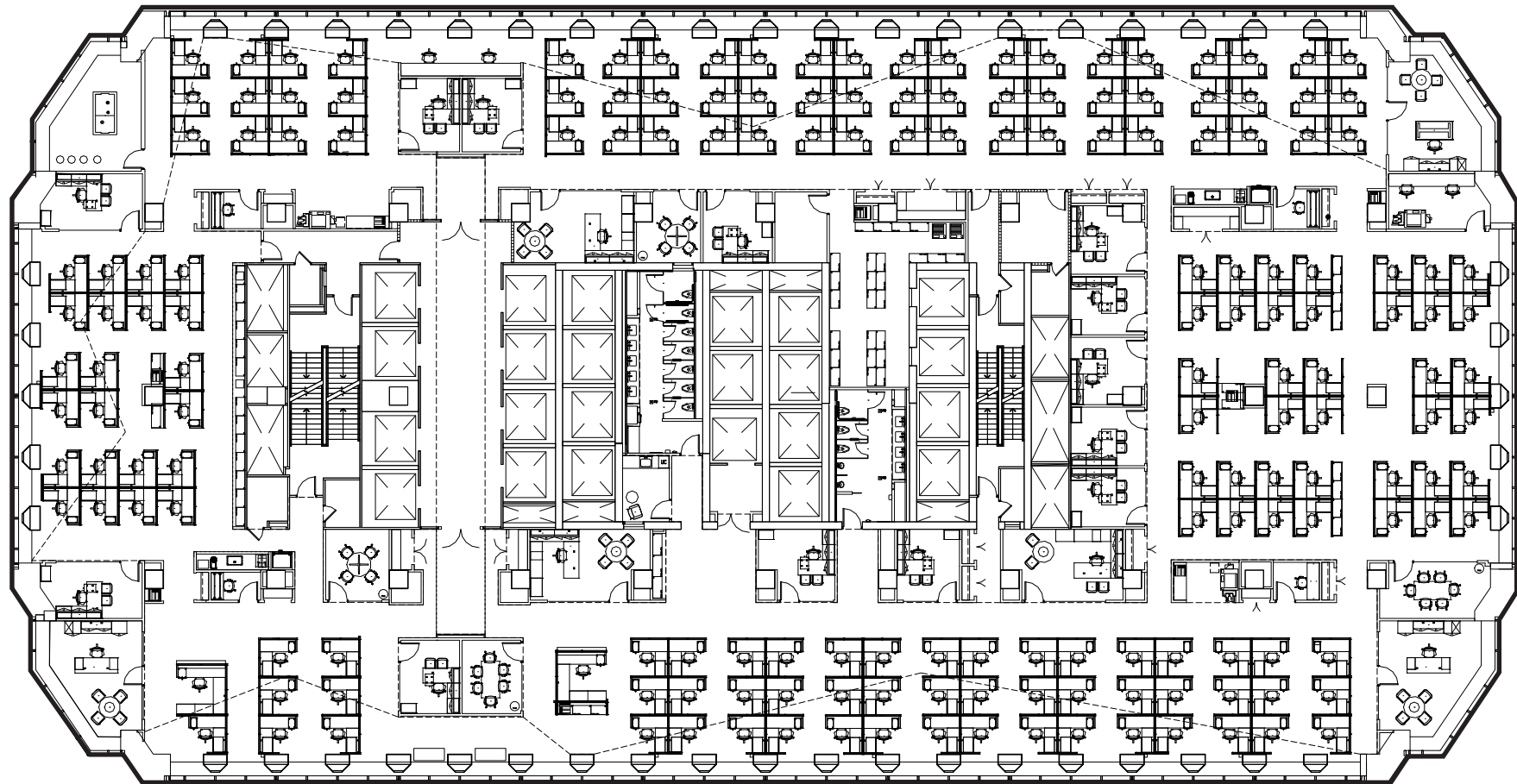
WEST TOWER FLOOR 16

Size: 28,368 RSF

Available: Immediate

Term: Through 8/31/2032

Demisable: No



1500 Market Street availabilities

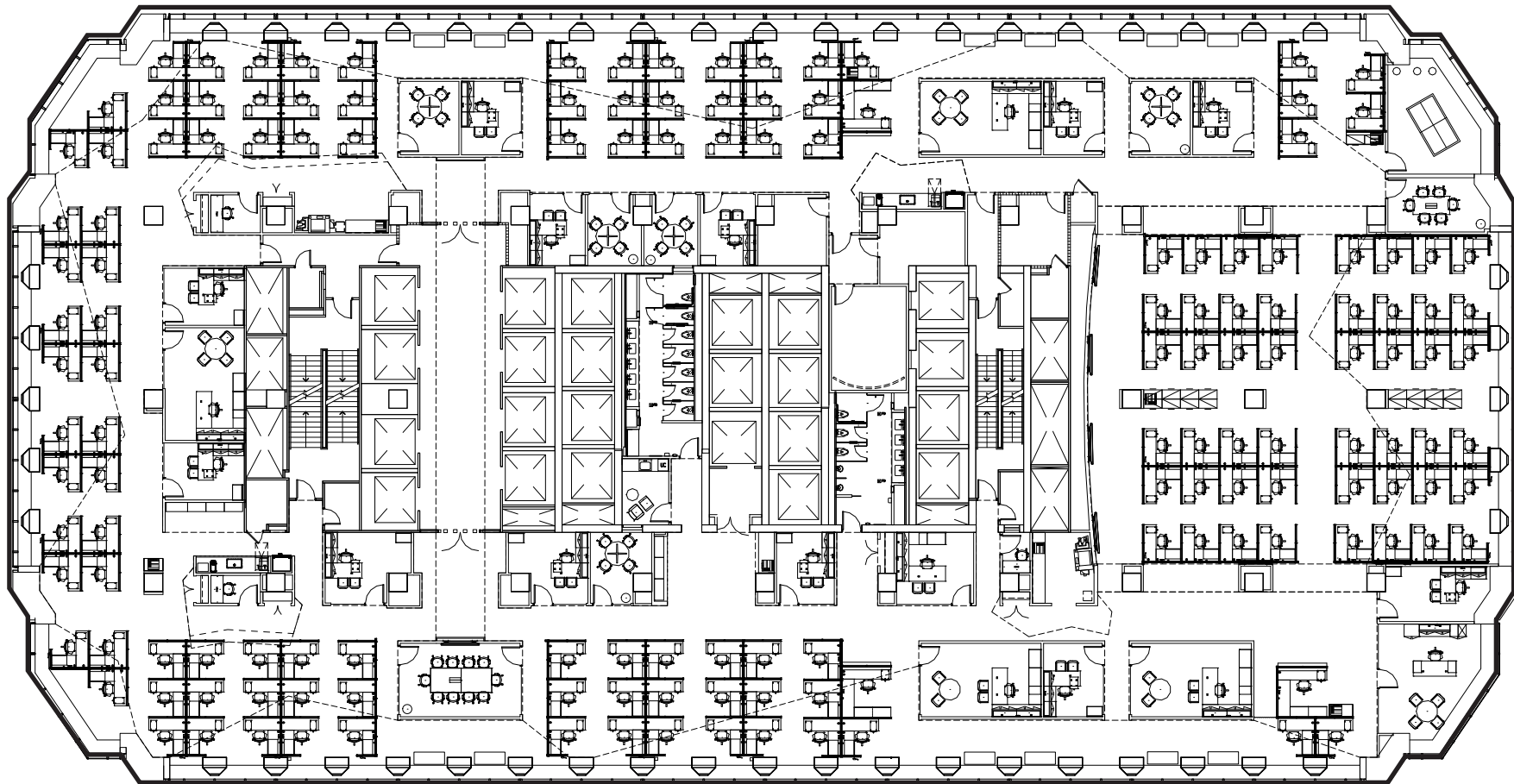
WEST TOWER FLOOR 17

Size: 28,368 RSF

Available: Immediate

Term: Through 8/31/2032

Demisable: No



1500 Market Street availabilities

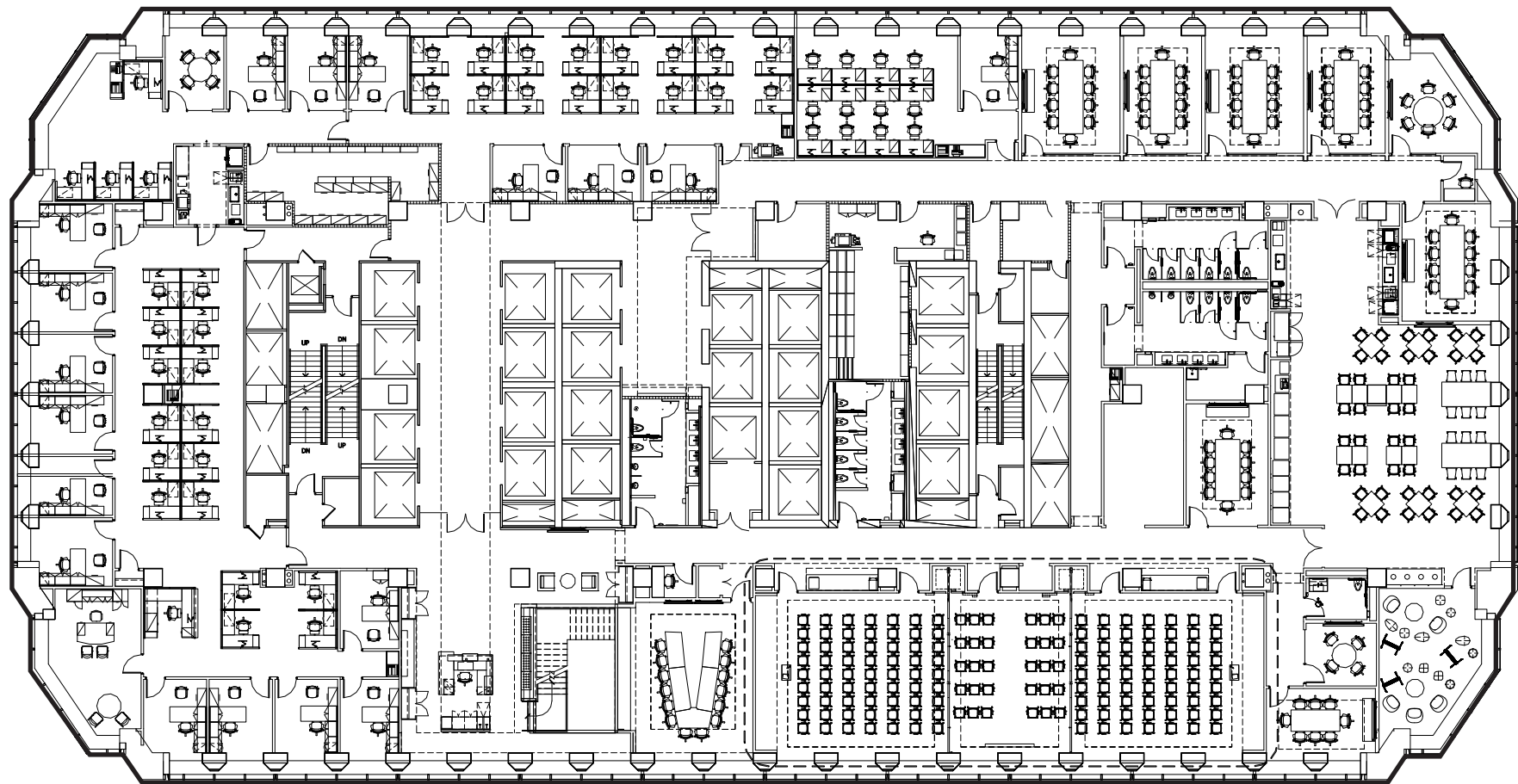
WEST TOWER FLOOR 18

Size: 28,652 RSF

Available: Immediate

Term: Through 8/31/2032

Demisable: No



1500 Market Street availabilities

WEST TOWER FLOOR 19

Size: 28,009 RSF

Available: Immediate

Term: Through 8/31/2032

Demisable: No



1500 Market Street availabilities

WEST TOWER FLOOR 20

Size: 8,187 RSF

Available: Immediate

Term: Through 8/31/2032

Demisable: Yes



1500 Market Street availabilities

EAST TOWER FLOOR 32

Size: 23,453 RSF

Available: Immediate

Term: Through 2/31/2024

Demisable: No

