



For lease

14190 N. Washington Highway
Ashland, VA

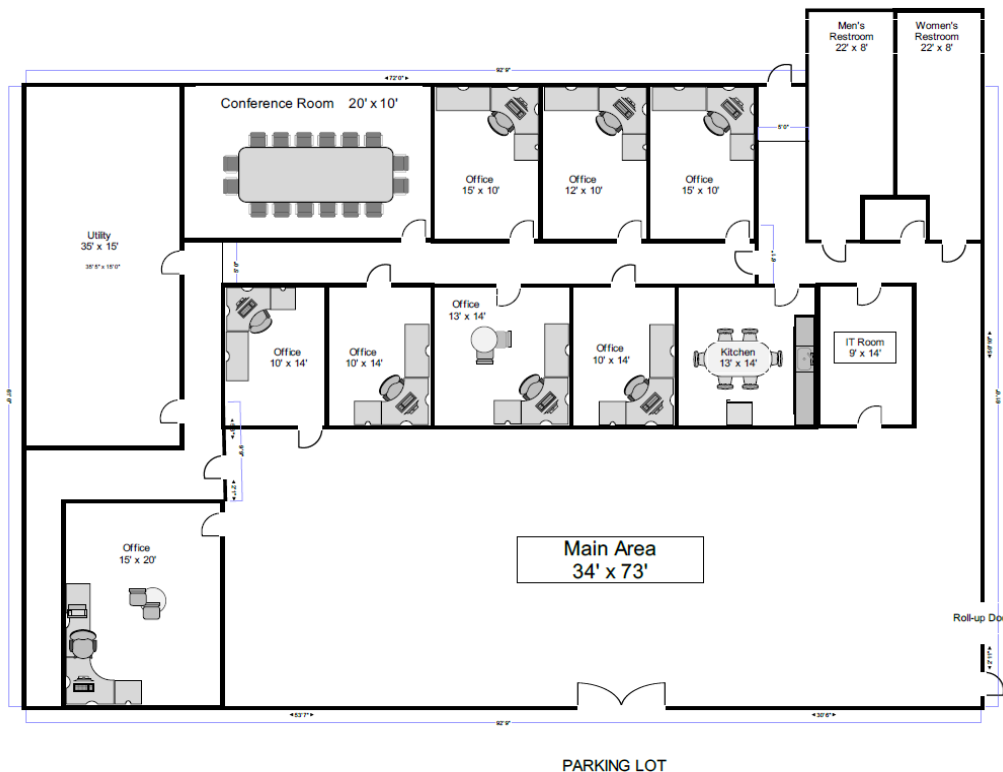


+/- 2,500-7,000 SF available

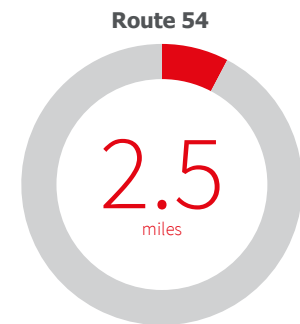
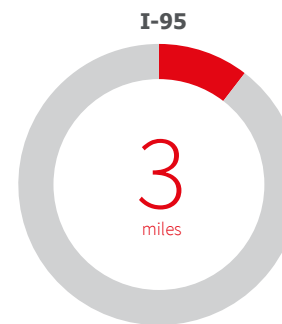
Overview

- > Ideal for office / showroom with yard space
- > +/- 2,500- 7,000 s.f. of office / showroom space
- > Outside storage yard available
- > Ample on-site parking
- > M-1 zoning in Hanover County
- > Easy access to I-95 via Rt. 54

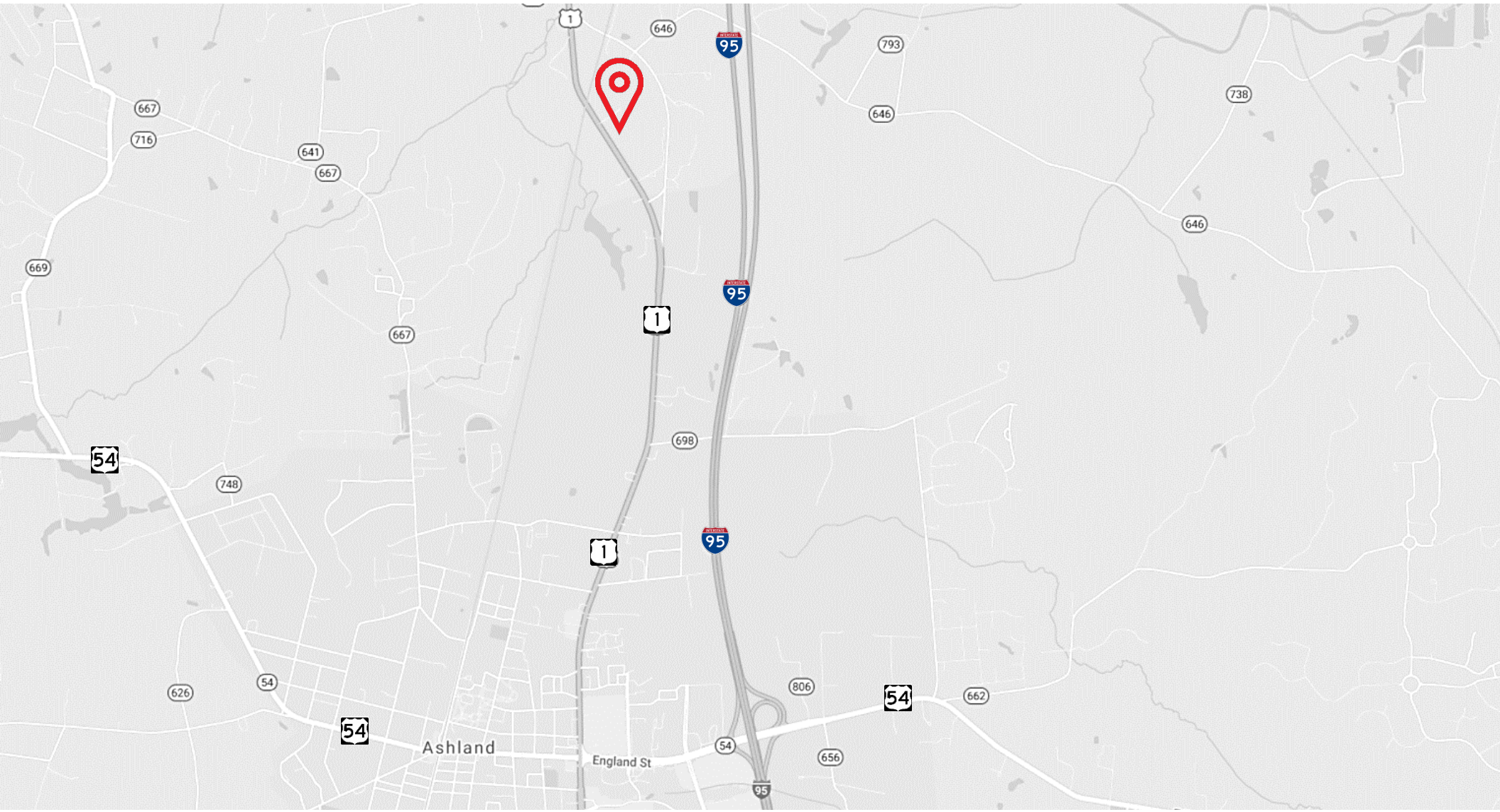
Property Aerial



Traffic scores



Map overview



Chris Avellana
Vice President

+1 804 200 6468
chris.avellana@am.jll.com

Although information has been obtained from sources deemed reliable, JLL does not make any guarantees, warranties or representations, express or implied, as to the completeness or accuracy as to the information contained herein. Any projections, opinions, assumptions or estimates used are for example only. There may be differences between projected and actual results, and those differences may be material. JLL does not accept any liability for any loss or damage suffered by any party resulting from reliance on this information. If the recipient of this information has signed a confidentiality agreement with JLL regarding this matter, this information is subject to the terms of that agreement. ©2020. Jones Lang LaSalle IP, Inc. All rights reserved.

