

± 10,690 SF Available
Sublease Rate: Upon Request

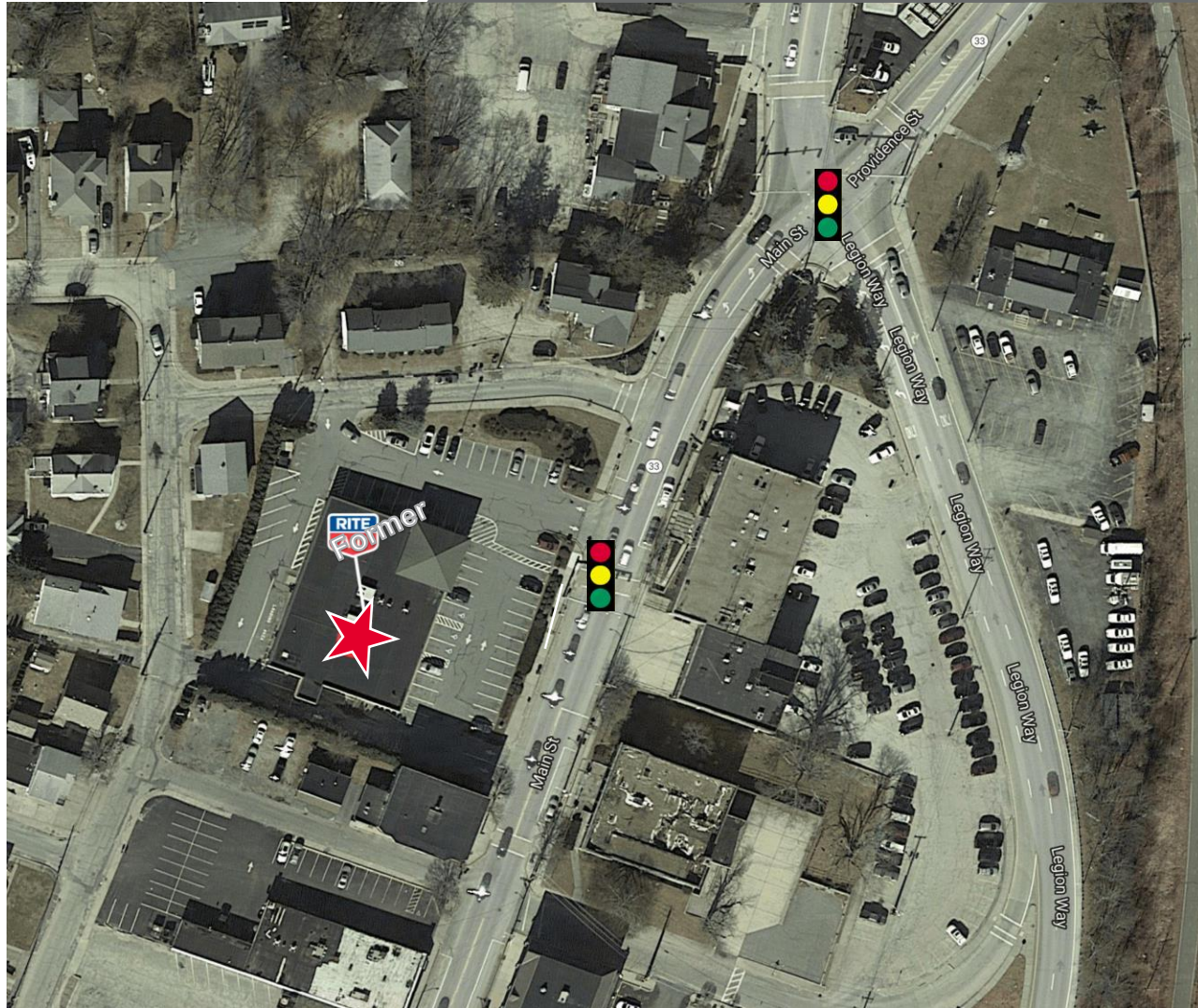
Property Highlights

- Lighted intersection
- Freestanding building
- Heart of the trade area
- Strong parking field
- Great access

Amenities

- Neighboring Retailers include CVS, Centerville Bank, Shell, Dollar General, Family Dollar, Dunkin' Donuts, Citizens Bank

SUBLEASE – FREESTANDING RETAIL SPACE



Demographics

	1 mi radius	3 mi radius	5 mi radius
Population	13,739	59,526	117,602
Households	6,316	26,562	49,702
Population Median Age	37.5	41.3	42.7
5 Yr Pop Growth (Total%)	2.2%	1.0%	0.5%

5 Mile Information



For more information, please contact:

Bill Greene
 Partner
 401.273.7429
 bgreene@hayessherry.com

146 Westminster Street, 2nd floor
 Providence, RI 02903
 phone: 401 273 1980
 www.hayessherry.com

